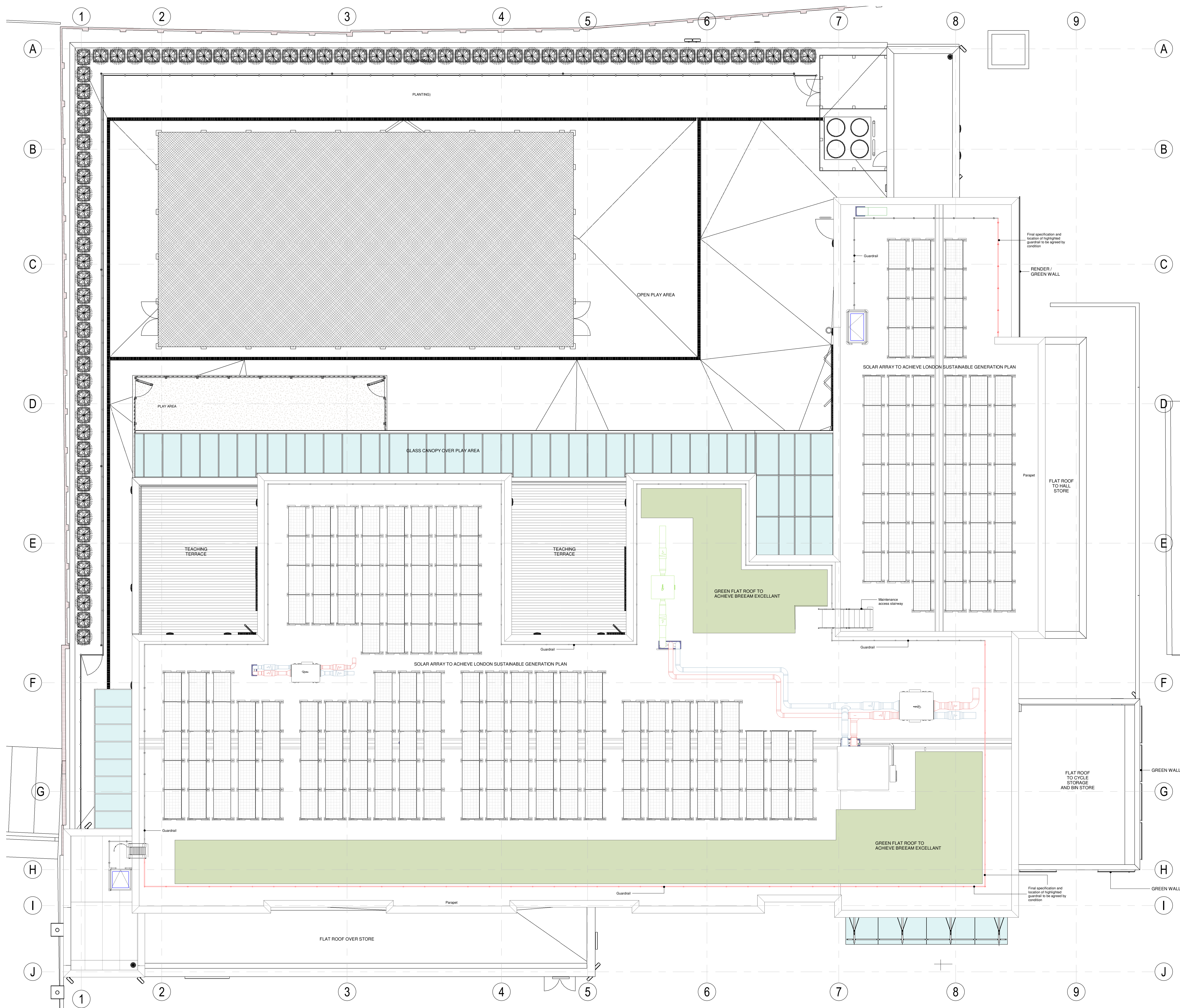




Client's Logo :



Contractor's Logo:



REV	DATE	DESCRIPTION	BY
14	18.09.19	South elev. conditional handrail section increased	ARD
13	17.09.19	Conditional handrail sections highlighted	ARD
12	17.09.19	Layout updated in line with Planning dept. requests	ARD
11	11.07.19	Updated PV array	LM
10	05.06.19	Plantroom roof reinstated, layout amended	ARD
9	05.03.19	Roof redesigned; Green roof and PVs allocation updated	LM

IN CASE OF DOUBT OR DISCREPANCIES PLEASE REFER TO ARCHITECT FOR INSTRUCTIONS. DRAWING AND SUITABILITY NUMBERS IN ACCORDANCE WITH BS1192:2007. THIS DRAWING SHOULD NOT BE SCALED. THIS DRAWING IS COPYRIGHT.

SUITABILITY NUMBER KEY:		DOCUMENTATION - SIGN-OFF	
WIP	50 - Work in Progress*	A	Fit for construction
SHARED	S1 - Fit for co-ordination**	B	Fit for construction, with comments
	S2 - Fit for information	C	Comprehensive revisions needed
	S3 - Fit for internal review and comment	ARCHIVE	
	S4 - Fit for construction approval	AB	As Built
		FC	Final Construction
DOCUMENTATION:	D1 - Fit for costing		* For internal pre-issue usage only.
	D2 - Fit for tender		** For model file usage only.
	D3 - Fit for contractor design		
	D4 - Fit for manufacturer procurement		

**boyesrees architects**

4th Floor, Greyfriars House  
Greyfriars Road, Cardiff CF10 3AL  
Tel: 029 2055 8900 Fax: 029 2039 9592  
www.boyesrees.co.uk  
Registered office: As above Reg No. 295  
1683 (England & Wales)

PROJECT TITLE :  
Proposed LIDL store on Richmond Road  
Twickenham

DRAWING TITLE :  
GA Roof Plan

DRAWN BY : ADT      SCALE : As indicated @ A1  
JOB NO : 4862      DATE : 11/17/15

SUITABILITY :	S4	REVISION :	14	
PROJECT ORIGIN, VOLUME	LEVEL	TYPE	DISCIP.	NUMBER
4862 BRA 00	03	DR	A	0103

18/09/2019 16:02:37 C:\Users\adelson\Documents\4862\_BRA-00-XL-M3-A-090001-RICHMOND LIDL STORE\_adelson.rvt