

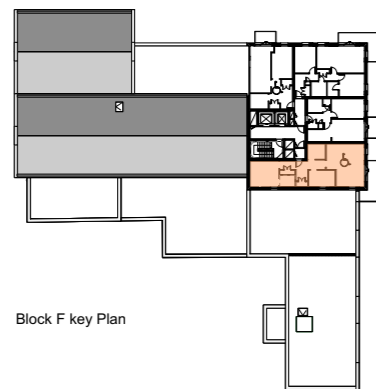
Part M(4) 3 Adaptable - 2 Bedroom apartment (fourth floor)

Occurs within Building F

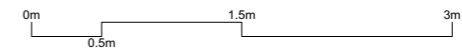


Typical M4(3) Adaptable 2 Bed Apartment

Total Area: 80 sqm / 861 sqft



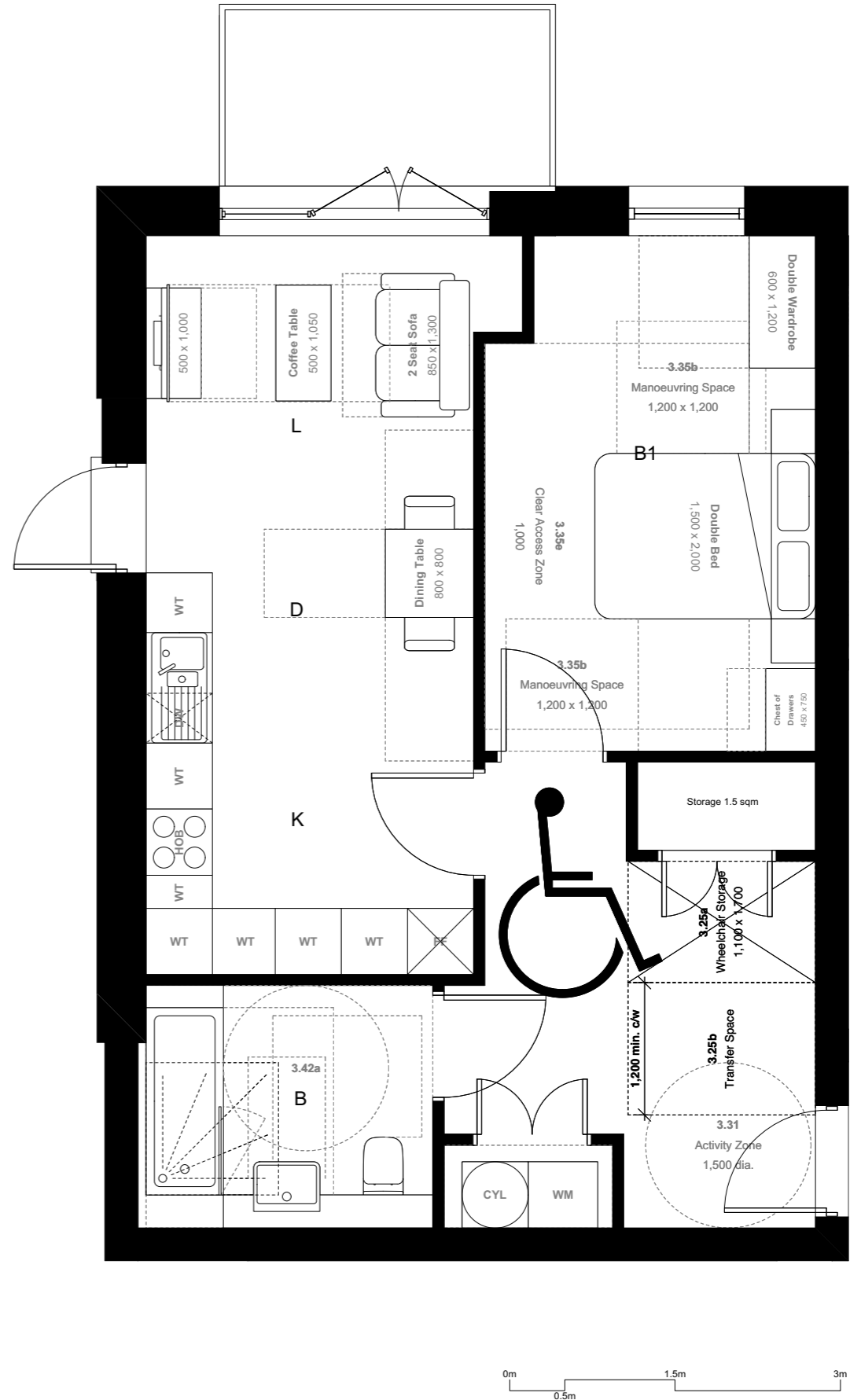
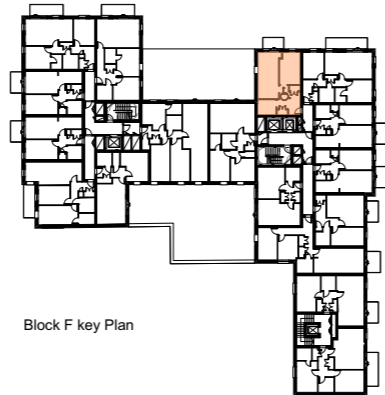
Block F key Plan



Part M(4) 3 Adaptable - 1 Bedroom apartment (multiple floors)

Occurs within Building F


Typical M4(3) Adaptable 1 Bed Apartment  
Total Area: 54 sqm / 581 sqft





# Assael

**Assael Architecture Limited**  
123 Upper Richmond Road  
London SW15 2TL

 +44 (0)207 736 7744

 info@assael.co.uk

 www.assael.co.uk

## Document Control Form

Project number	A2871
Project title	Greggs Bakery, Twickenham
Document title	Design Statement Planning Addendum
Client	London Square
Document status	First Issue
Date of issue	25 October 2019
Prepared by	Ed Sharland, Associate
Checked by	Loren Thanyakittikul, Director

Assael Architecture Limited has prepared this document in accordance with the instructions of the Client under the agreed Terms of Appointment. This document is for the sole and specific use of the Client and Assael Architecture shall not be responsible for any use of the document or its contents for any purpose other than that for which it was prepared and provided. Should the Client require to pass copies of the document to other parties for information, the whole of the report should be so copied, but no professional liability or warranty shall be extended to other parties by Assael Architecture in this connection without the explicit written agreement thereto by Assael Architecture Limited.

© 2019 Assael Architecture Limited

Assael Architecture Limited owns the copyright of this design and document which must not be reproduced in whole or part without the written permission of Assael Architecture Limited.

Computer generated photo montages that may be contained in this document that have an image identification number containing the letters 'AVR' conform to our 'Accurate Visual Representation Methodology' as set out by the London View Management Framework. In the absence of the letters 'AVR' the image cannot be used as proof of visual impact but as an 'impression'.

Status	Revision	Date issued	Prepared by	Checked by
R1	Planning Addendum	25/10/2019	ES	LT