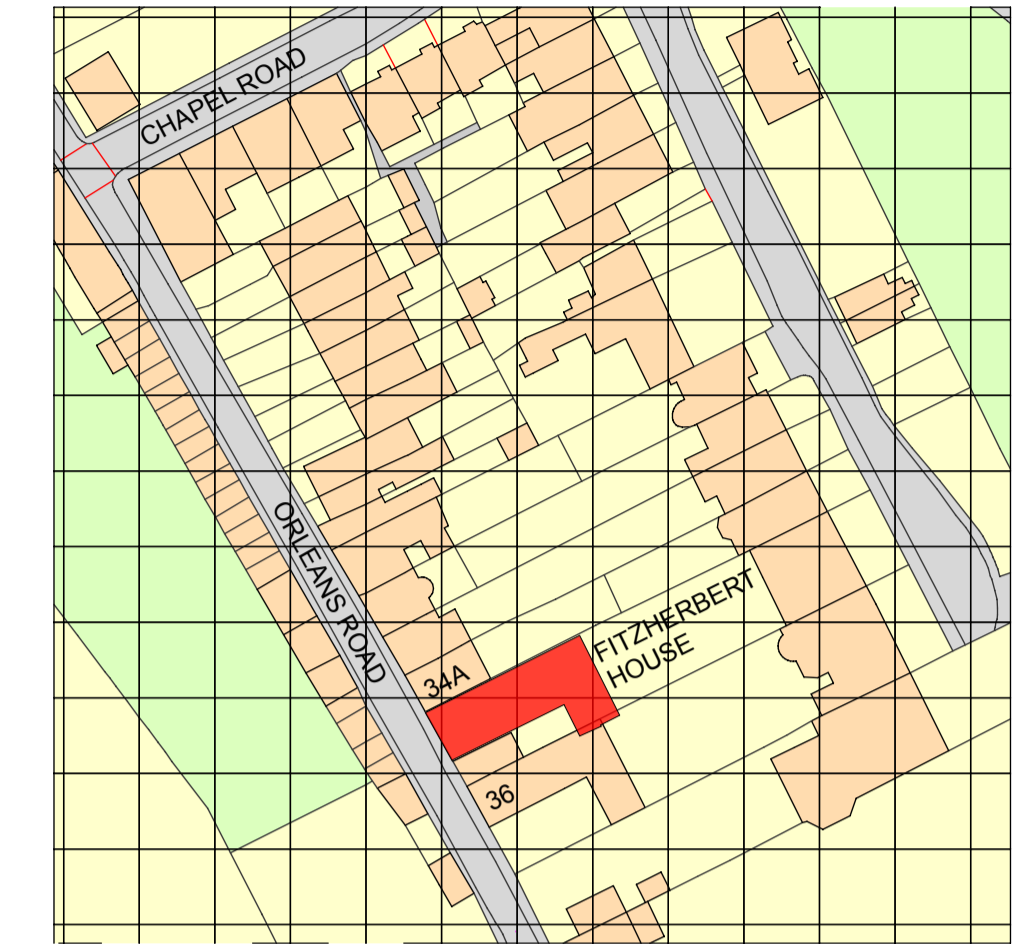
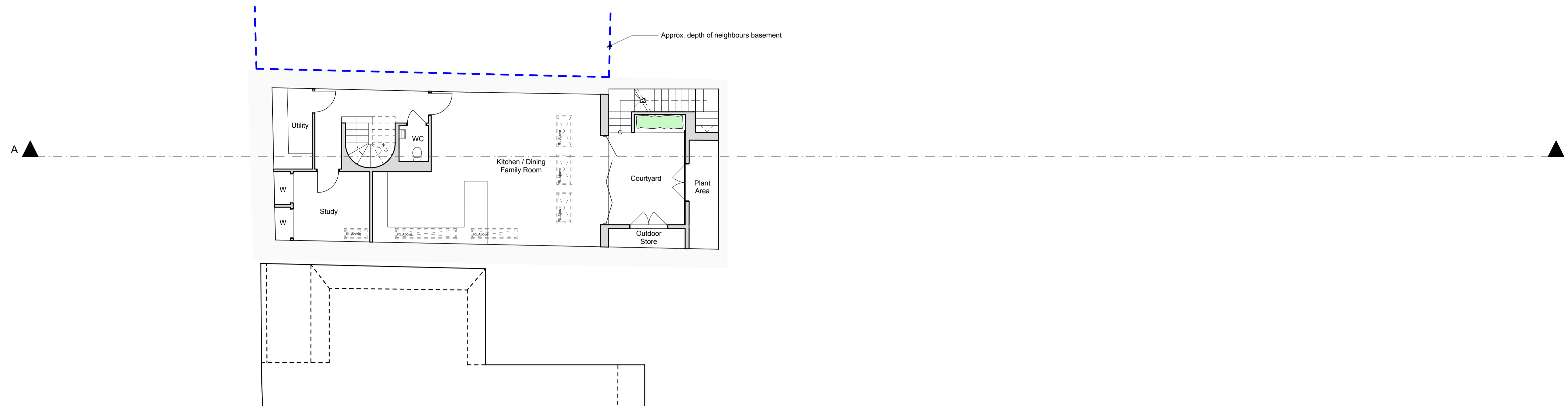
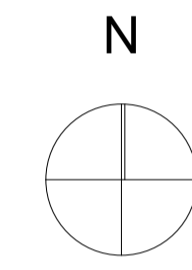




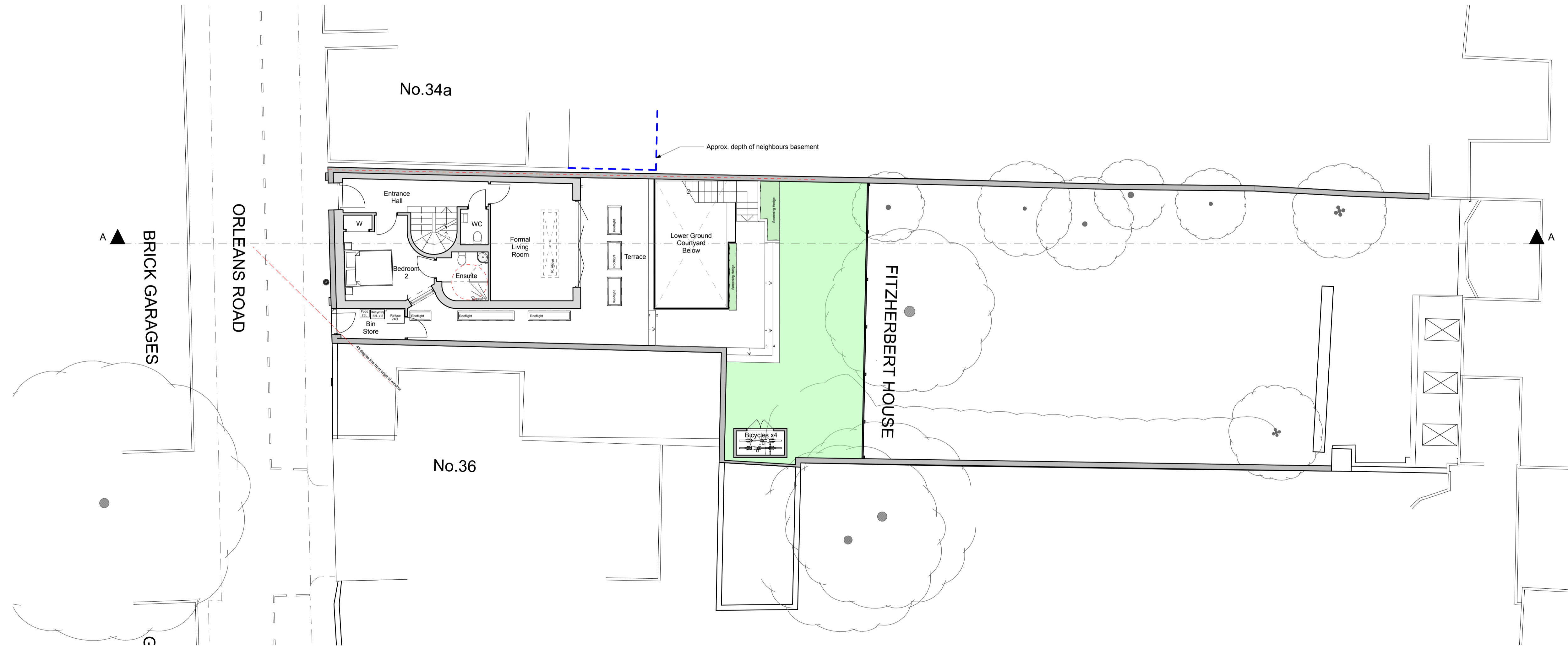
Notes:  
 This document and its design content is copyright ©. It shall be read in conjunction with all other associated project information including models, specifications, schedules and related consultants documents. Do not scale from documents. All dimensions to be checked on site. Immediately report any discrepancies, errors or omissions on this document to Shape London Architects.  
 Do not scale from this drawing.  
 All dimensions to be checked on site.  
 All areas are approximate.



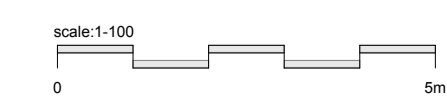
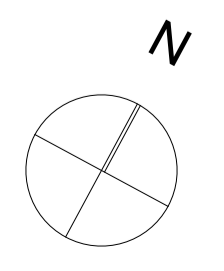
Site Location Plan  
 1:1000 @ A1



Lower Ground Floor Plan  
 1:100 @ A1



Ground Floor Plan  
 1:100 @ A1



rev:	A	S2	02/10/2019	PLANNING	DNC	JJ
status:					by:	chk:

shapelondon+ architects

Holbrook House  
 34-38 Hill Rise  
 Richmond, TW10 6UA  
 T: +44 (0)20 8226 4885  
 E: info@shape-london.co.uk

client  
**Mrs J Williams**

project  
**LRO Fitzherbert House**  
 Orleans Road  
 TW1 2NQ

drawing title  
**Proposed Ground Floor,  
 Lower Ground Floor Plans**

scale:	1:1000, 1:100	dwn by:	DNC	chk by:	JJ
status:	S2	description:	PLANNING		
project:	0078	origin:	SLA	zone:	XX
		level:	GF	type:	DR
		role:	A	dwg no.:	0201
		rev:			A