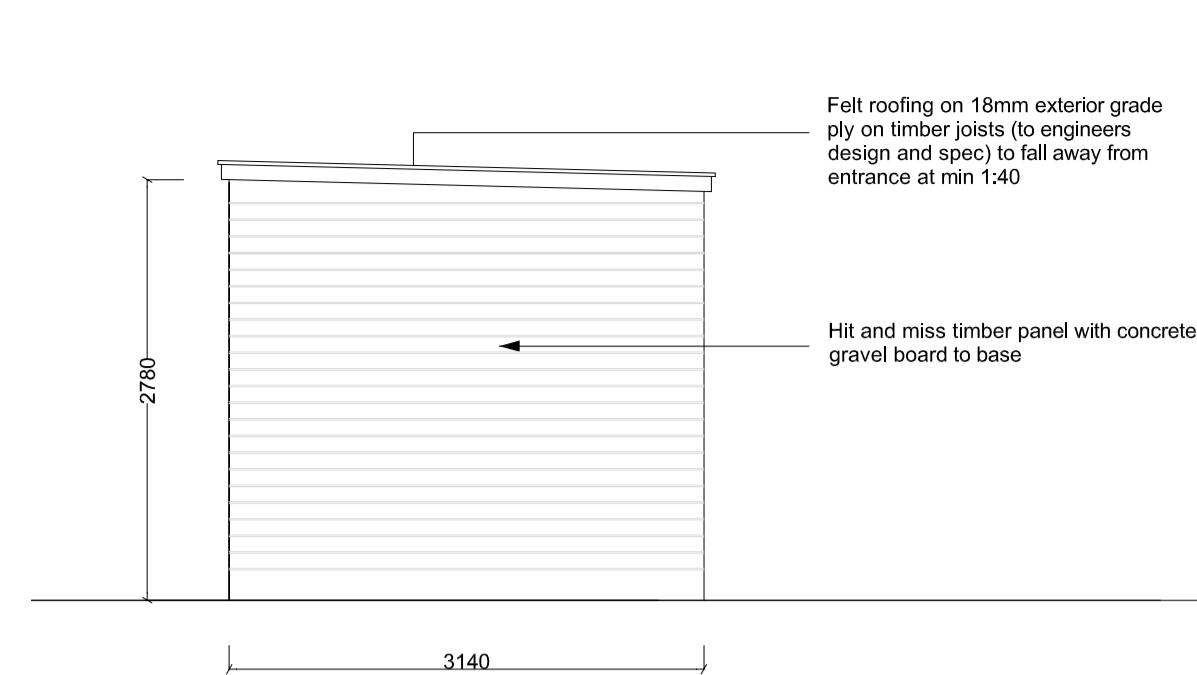
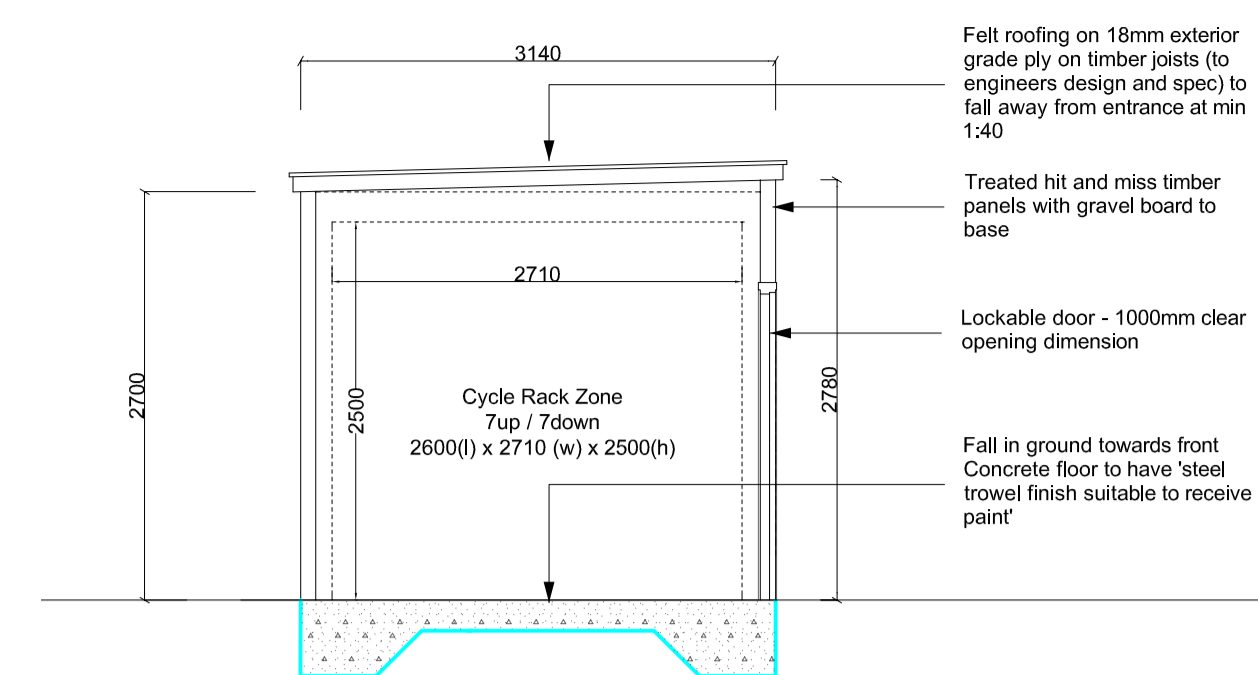


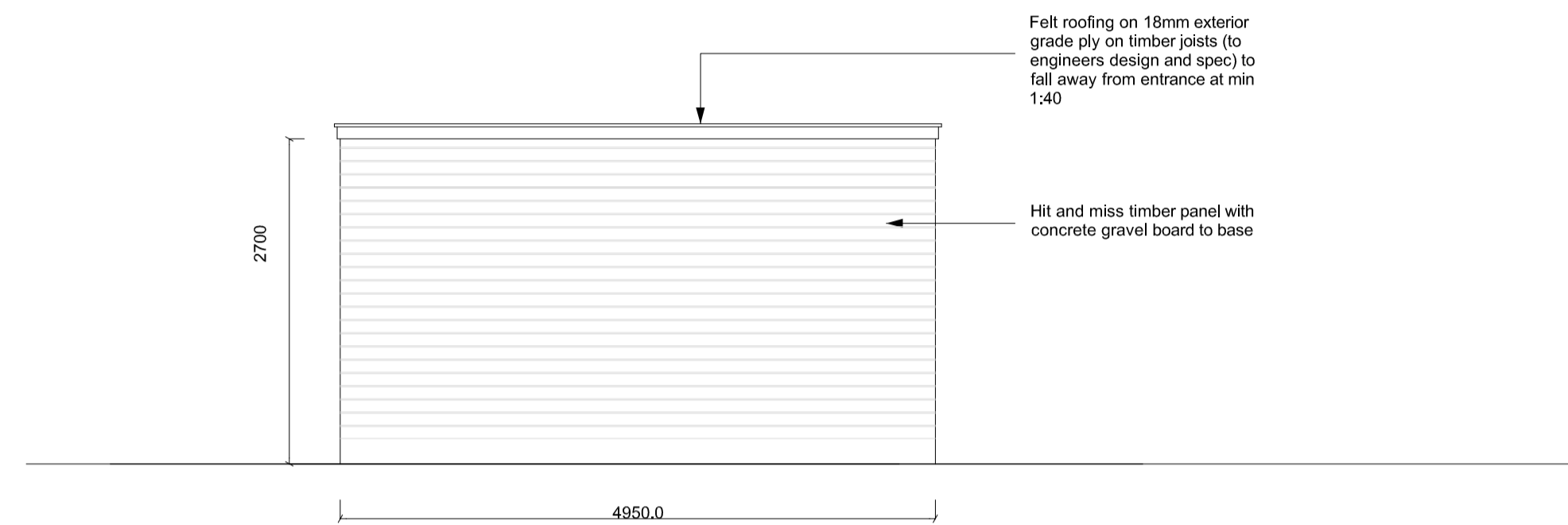
1. Communal cycle store elevation 1:50



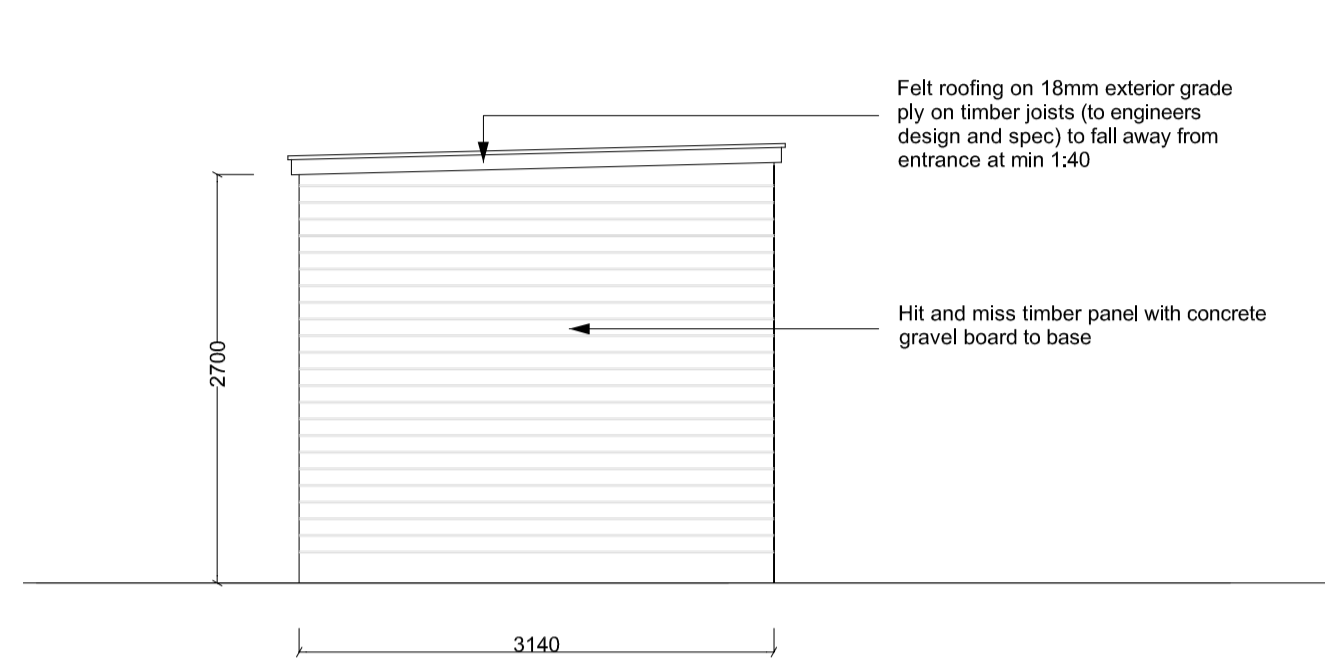
4. Communal cycle store elevation 1:50



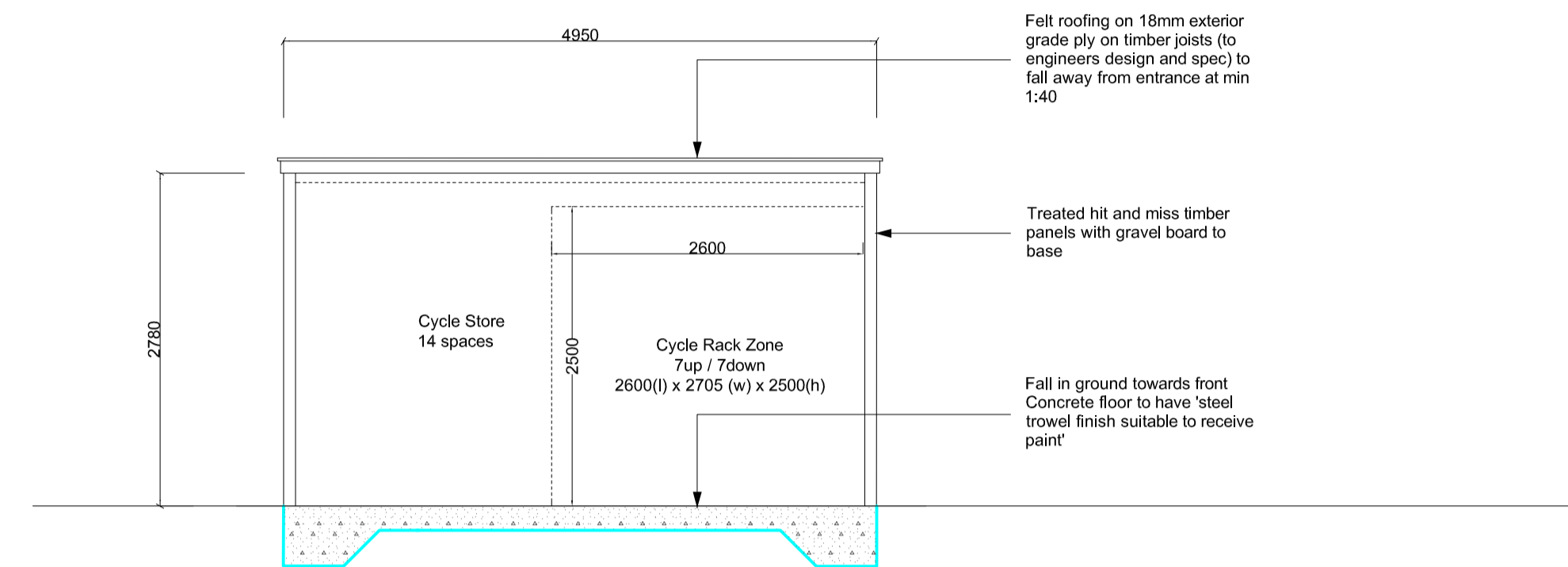
Communal cycle store Section BB 1:50



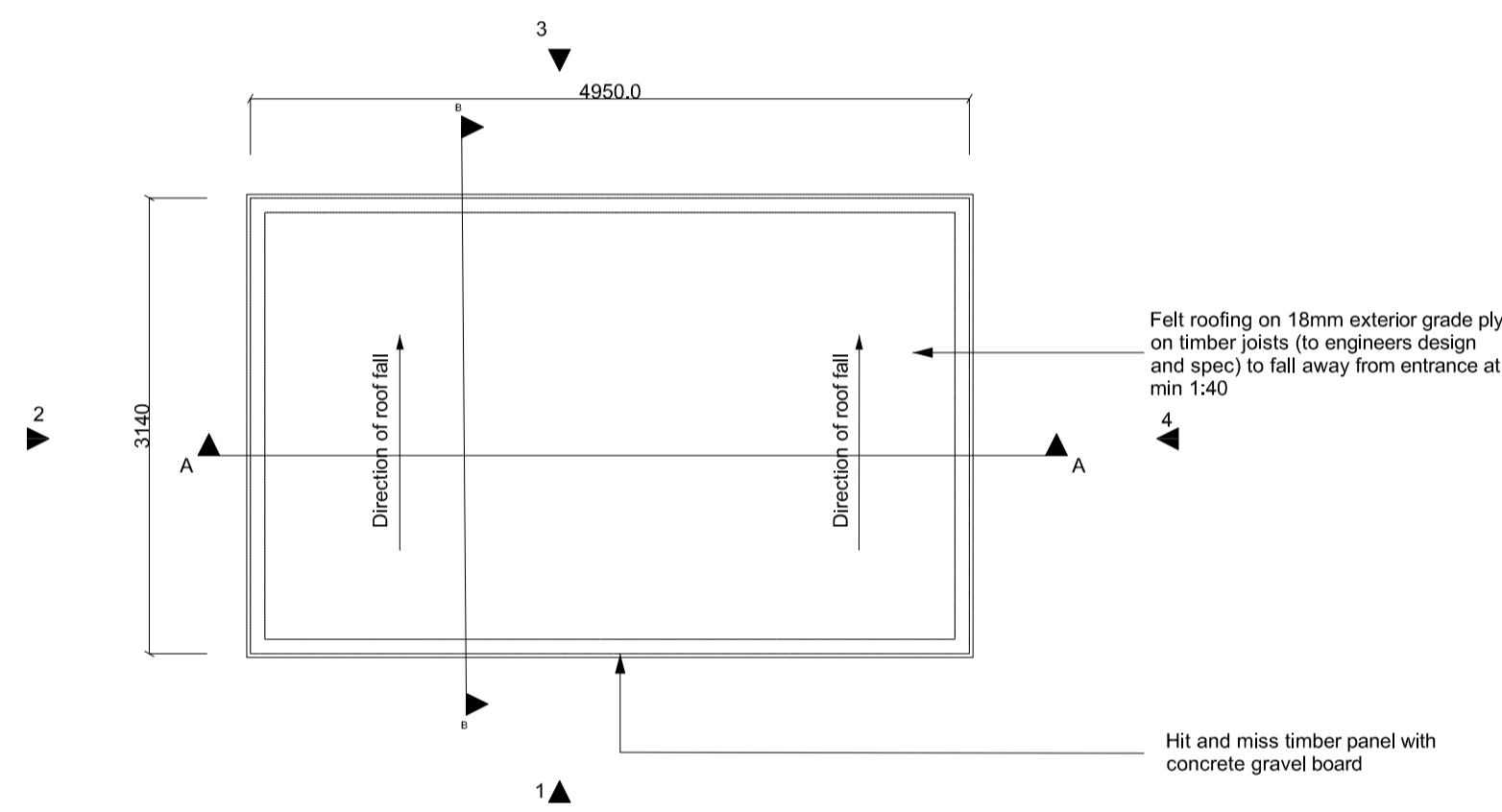
3. Communal cycle store elevation 1:50



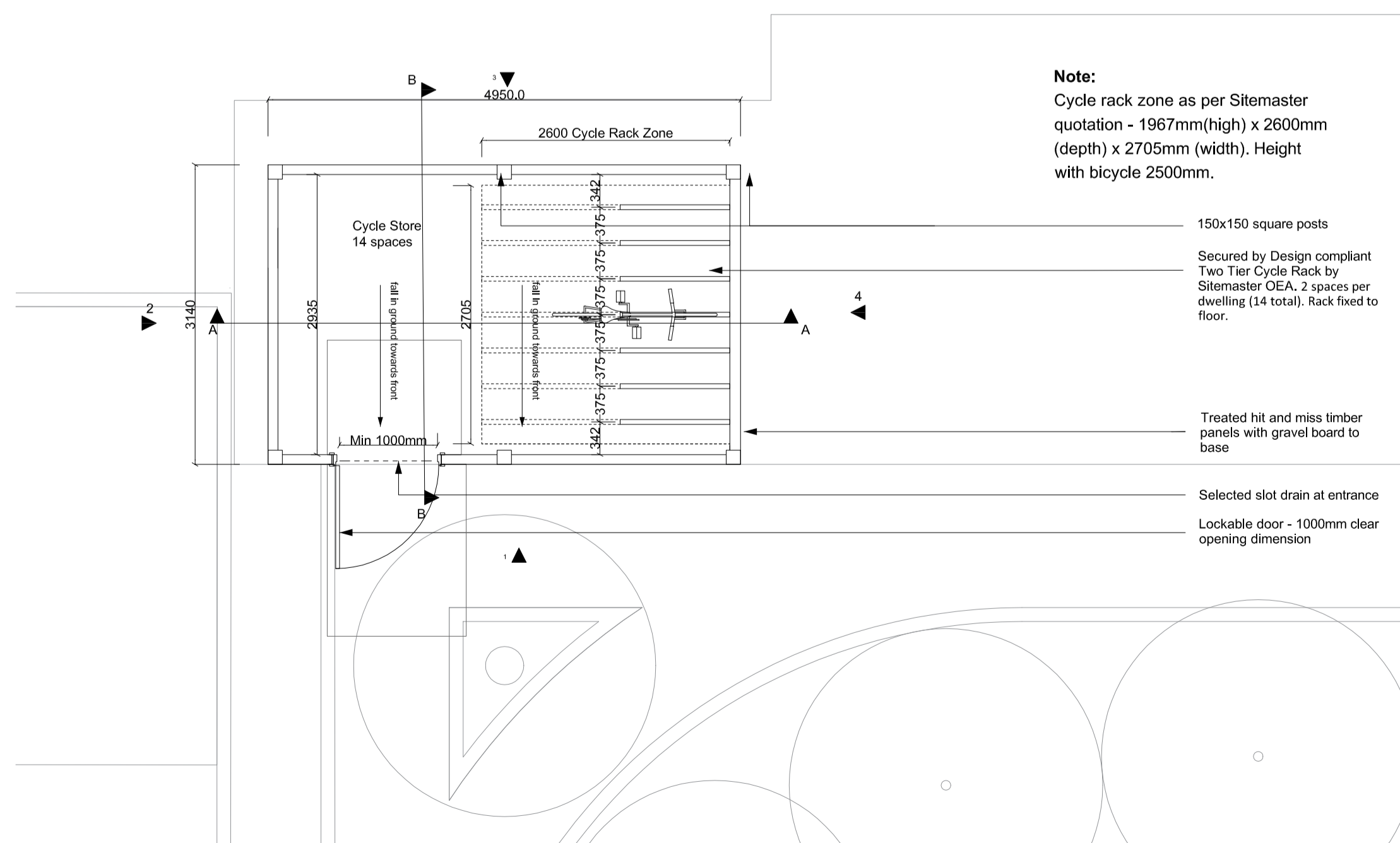
2. Communal cycle store elevation 1:50



Communal cycle store Section AA 1:50



Communal cycle store roof plan 1:50



Communal cycle store plan 1:50

Note:
Detail omitted under Rev C3

Detail 01 - Parapet Detail 1:5

Note:
Detail omitted under Rev C3

Detail 02 - Parapet Detail 1:5

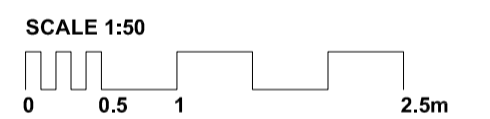
Note:
Detail omitted under Rev C3

Detail 03 - Brick Base 1:5

Note:
Detail omitted under Rev C3

Detail 04 - Door Base 1:5

Note:
For all raft details and design refer to OCSC drawing SSK-35 and B849(L)-1214



CONSTRUCTION

REV	DESCRIPTION	ISSUE	DWN	CHK
C3	Change to timber structure. Pump room removed.	16/08/2018	PN	PN
C2	Remove boarded opening. Increase building width.	12/08/2018	PN	PN
C1	Construction Issue	05/11/2018	PN	PN

Client
Berkeley Homes West London

Project
Latchmere House
Church Road, Richmond TW10 5HH
and
Latchmere Lane, Kingston KT2 5NX

Drawing
Cycle Store Design Intent

Scale	Date	Drawn	Checked
1:50 @ A1	Nov '16	MBe	SC

Brookes Architects

Upstairs at The Grange, Bank Lane,
London SW15 5JT
T 020 8487 1223
F 020 8876 4172
E info@brookesarchitects.co.uk
www.brookesarchitects.co.uk

Drawing No.	Rev No.
4721 4	364 C3