

# Station Yard Twickenham

## Public Realm

**BDP.**

November 2019



1. Proposed carriageway widening as part of LB Richmond upon Thames proposals
2. Proposed 4m wide footway build out to provide continuous new footway and loading bay as part of LB Richmond upon Thames proposals
3. New trees as part of LB Richmond upon Thames proposals
4. Existing trees to be replaced in their current positions
5. Improved footway resurfacing as part of LB Richmond upon Thames proposals
6. Secure access to back of house area
7. Perimeter buffer planting
8. Granite 'doormat' to main entrance
9. Tree and shrub planting
10. Disabled car park spaces
11. Raised table threshold and retained vehicle barrier



### Hard Landscape

Currently, there is little reference on site for good existing materiality. The surrounding streets and footpaths are predominantly asphalt with some small areas of concrete flags.

The approach to hard landscape for Station Yard is for a simple, but robust and effective uplift to reflect the enhancement of the site through the new building.

- Materials utilise a range of warmer tones to create a more welcoming public and resident environment;
- That any larger unit slabs are used where no vehicle over-run occurs, denoting pedestrian focussed spaces;
- Natural stone kerbs will be contrasting in colour and flush to adjacent paving.
- The comprehensive use of recessed covers is proposed in paved areas to reduce the visual presence of public utilities.
- All areas will be designed in full recognition of the Disabled Discrimination Act and the need to ensure that all facilities are reasonably accessible to disabled people. Important considerations include the need to ensure all gradients are fully accessible, all routes are free of obstacles and that appropriate textural and colour contrast is provided at footpaths/road junctions.

#### Station Yard

This pavement in front of the development is proposed to be resurfaced with concrete flags from Marys Terrace to the footpath in front of the Albany PH so that there is a consistent surface around the new building. This is in accordance with London Borough of Richmond Upon Thames proposal on drawing 2120\_C0\_GL\_001

#### Station Road

The section of carriageway directly in-front of the Albany PH will be resurfaced with HRA so that this piece of highway is enhanced to match the uplift of the surrounding area.

#### TfL Car Park

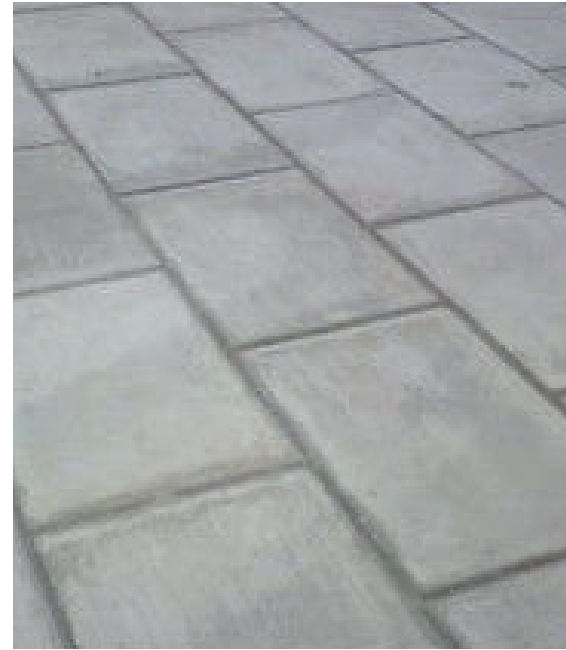
This will be resurfaced with HRA to improve the appearance and the functionality of this space. It is anticipated this will be to match existing levels, with any dips and hollows filled to avoid ponding.

#### Building Entrance

On Station Yard, the entrance will be highlighted by a 'doormat' of granite setts to highlight this from the main street footpath palette.



Hard Landscape



Concrete flags to Street Footways  
450 x 450 x 70mm

Laid stack bond  
Natural colour

Marshalls Perfecta, trafica range  
square edge



Concrete Setts to raised table crossing and shared  
loading bay

160 x 120 x 80mm  
Traditional colour

Marshalls Tegula Concrete Block



Artificial Stone Paving Flag to building access

600 x 450 x 63mm  
Silver grey colour

Marshalls Standard Pimple Paving,  
Fibre reinforced,  
Square edge natural



Granite Doormats to Residential Entrance

100 x 100 x 70mm  
Two tone mix of mottled pink and light beige  
Fine picked finish laid stack bond within thresholds

Marshalls Cressida Granite and Larrisa Granite



Hot Rolled Asphalt to TfL car park and Station Road

## Soft Landscape

Similar to the hard landscape strategy, the approach to planting is for soft landscape strategy to unify the design proposals and generate consistency across the site.

### Planting Generally

The scheme will use a combination of some small scale tree planting with ornamental shrub and herbaceous planting to ensure the site has a significantly improved soft landscaped character.

### Trees

A copse of trees is located to provide seasonal variation, greenery, character and visual interest to the eastern end of the site.

### Ornamental Planting

Planting at the base of the building will create a gentle soft buffer from the public domain to the groundfloor units. Species selected will have the form of low to medium sized plants, to maintain good visibility and to remove potential hiding places yet vary in texture, smell and seasonal interest. Taller plants will be located against the groundfloor terrace upstand. The use of native species will be encouraged. This type will add colour to the site and will be used to frame semi private residential terraces. Evergreen species used in the planting mixes will provide visual impact and tolerate various urban and climatic demands.



**Tree Planting**

Trees planted at Station Yard have been carefully located where the pavement area is wider whilst complementing the architecture, benefiting the streetscape and avoiding any obstruction to important views.

The proposal replaces the three low quality existing trees currently occupying the Station Yard footpath south of the TfL car park. These new trees will be located in the existing locations and are proposed to be *Prunus avium* 'Plena' (Wild Cherry). These will be 25-30cm girth with 2.5m clear stem.

Two additional trees are proposed in front of the Albany PH in accordance with London Borough of Richmond Upon Thames proposal on drawing 2120\_C0\_GL\_001

At the eastern end of the site, a grove of 5 *Pyrus calleryana* 'Chanticleer' (Wild Pear) will be planted. These are attractive, low maintenance trees that withstand urban conditions well and have a columnar form - which will not impede onto the operation of the adjacent space. These will be semi mature species at 18-20cm girth.



*Prunus avium* 'Plena'  
Proposed replacement for Station Yard  
25-30cm girth with 2.5m clear stem.



*Pyrus communis*  
Proposed at eastern end of scheme  
18-20cm girth 2m clear stem.

Pair of existing trees as part of LB  
Richmond Upon Thames proposals

3 new trees to be planted in existing locations

