

Sources: Point 2 Surveyors
 Survey Info
 Point Cloud Data
 Assael Architecture Limited
 3D Models (received 31/10/19)
 A3004 2-7-1 ENVELOPE AND PARTY-A1, A2 & A3.dwg
 A3004 2-7-1 ENVELOPE AND PARTY-B.dwg
 A3004 2-7-1 ENVELOPE AND PARTY-C1&C2.dwg
 A3004 2-7-1 ENVELOPE AND PARTY-D1 & D2.dwg
 A3004 2-7-1 ENVELOPE AND PARTY-E.dwg
 3D Model + 2D Drawings (received 08/11/19)
 A3004 2-7-1 ENVELOPE AND PARTY-E.dwg
 MNR-AA-BLE-ZZ-DR-A-(4500_4503)-R3.dwg
 MNR-AA-BE1-(GF_05)-DR-A-2601-R6 .dwg

Key: W1/10 Window Label
 - - - - Obscured Window Outline

Scheme Confirmed: --
 Date: --

Project: Homebase
 Richmond

Drawn By: JR
 Scale: NTS @ A3
 Date: Nov 19

Title: Window Locations
 1-39 Robinson Court

Dwg No: P1685/WM/40
 Rel: 10





Sources: Point 2 Surveyors
 Survey Info
 Point Cloud Data
 Assael Architecture Limited
 3D Models (received 31/10/19)
 A3004 2-7-1 ENVELOPE AND PARTY-A1, A2 & A3.dwg
 A3004 2-7-1 ENVELOPE AND PARTY-B.dwg
 A3004 2-7-1 ENVELOPE AND PARTY-C1&C2.dwg
 A3004 2-7-1 ENVELOPE AND PARTY-D1 & D2.dwg
 A3004 2-7-1 ENVELOPE AND PARTY-E.dwg
 3D Model + 2D Drawings (received 08/11/19)
 A3004 2-7-1 ENVELOPE AND PARTY-E.dwg
 MNR-AA-BLE-ZZ-DR-A-(4500_4503)-R3.dwg
 MNR-AA-BE1-(GF_05)-DR-A-2601-R6 .dwg

Key: w1/10 Window Label
- - - - - Obscured Window Outline

Project: Homebase
 Richmond

Title: Window Locations
 50-52 St Mary's Grove

Scheme Confirmed: --

Date: --

Drawn By: JR

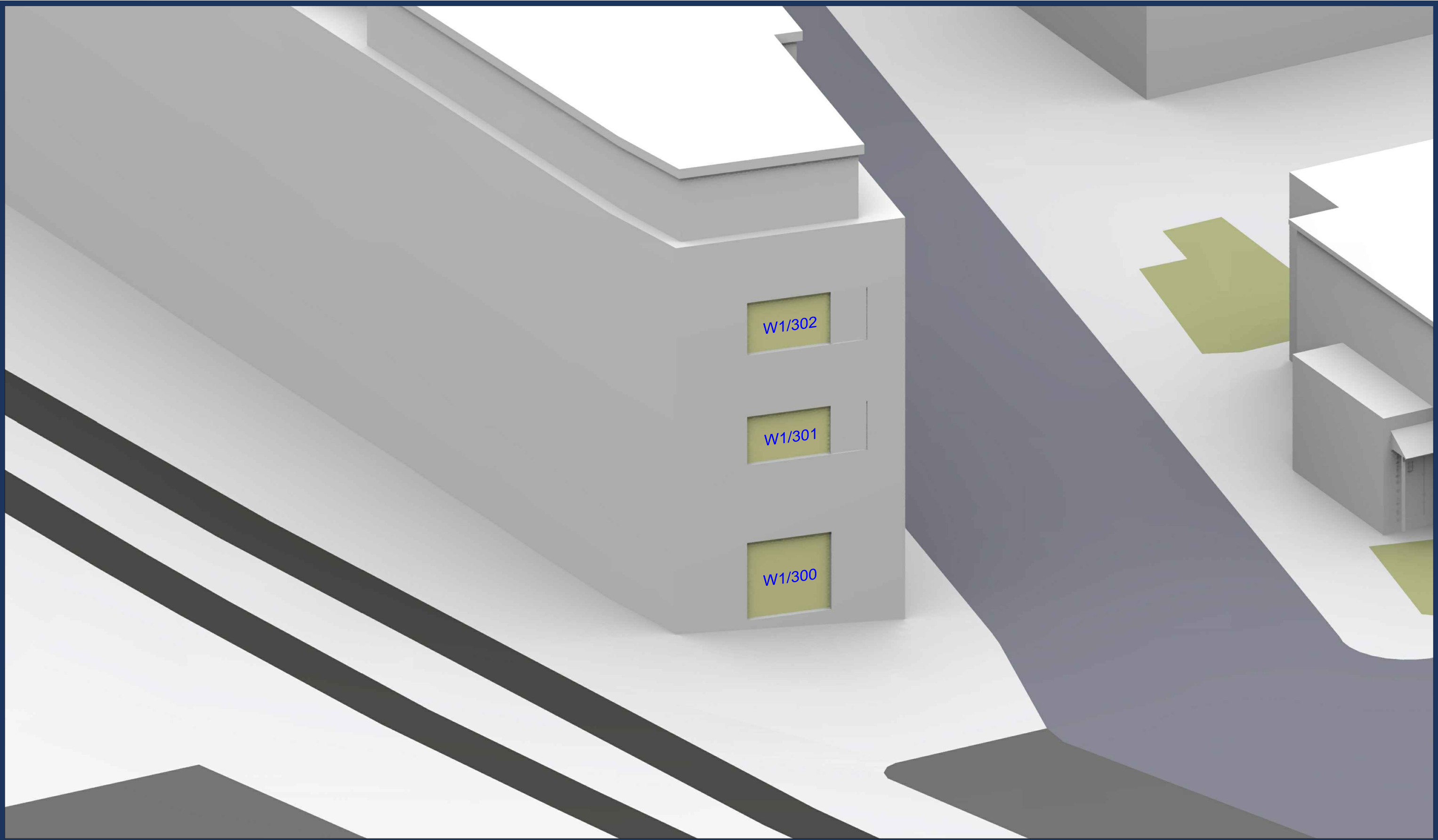
Scale: NTS @ A3

Date: Nov 19

Dwg No: **P1685/WM/41**

Rel: **10**





Sources: Point 2 Surveyors
 Survey Info
 Point Cloud Data
 Assael Architecture Limited
 3D Models (received 31/10/19)
 A3004 2-7-1 ENVELOPE AND PARTY-A1, A2 & A3.dwg
 A3004 2-7-1 ENVELOPE AND PARTY-B.dwg
 A3004 2-7-1 ENVELOPE AND PARTY-C1&C2.dwg
 A3004 2-7-1 ENVELOPE AND PARTY-D1 & D2.dwg
 A3004 2-7-1 ENVELOPE AND PARTY-E.dwg
 3D Model + 2D Drawings (received 08/11/19)
 A3004 2-7-1 ENVELOPE AND PARTY-E.dwg
 MNR-AA-BLE-ZZ-DR-A-(4500_4503)-R3.dwg
 MNR-AA-BE1-(GF_05)-DR-A-2601-R6 .dwg

Key: w1/10 Window Label
----- Obscured Window Outline

Scheme Confirmed:	Date:
--	--

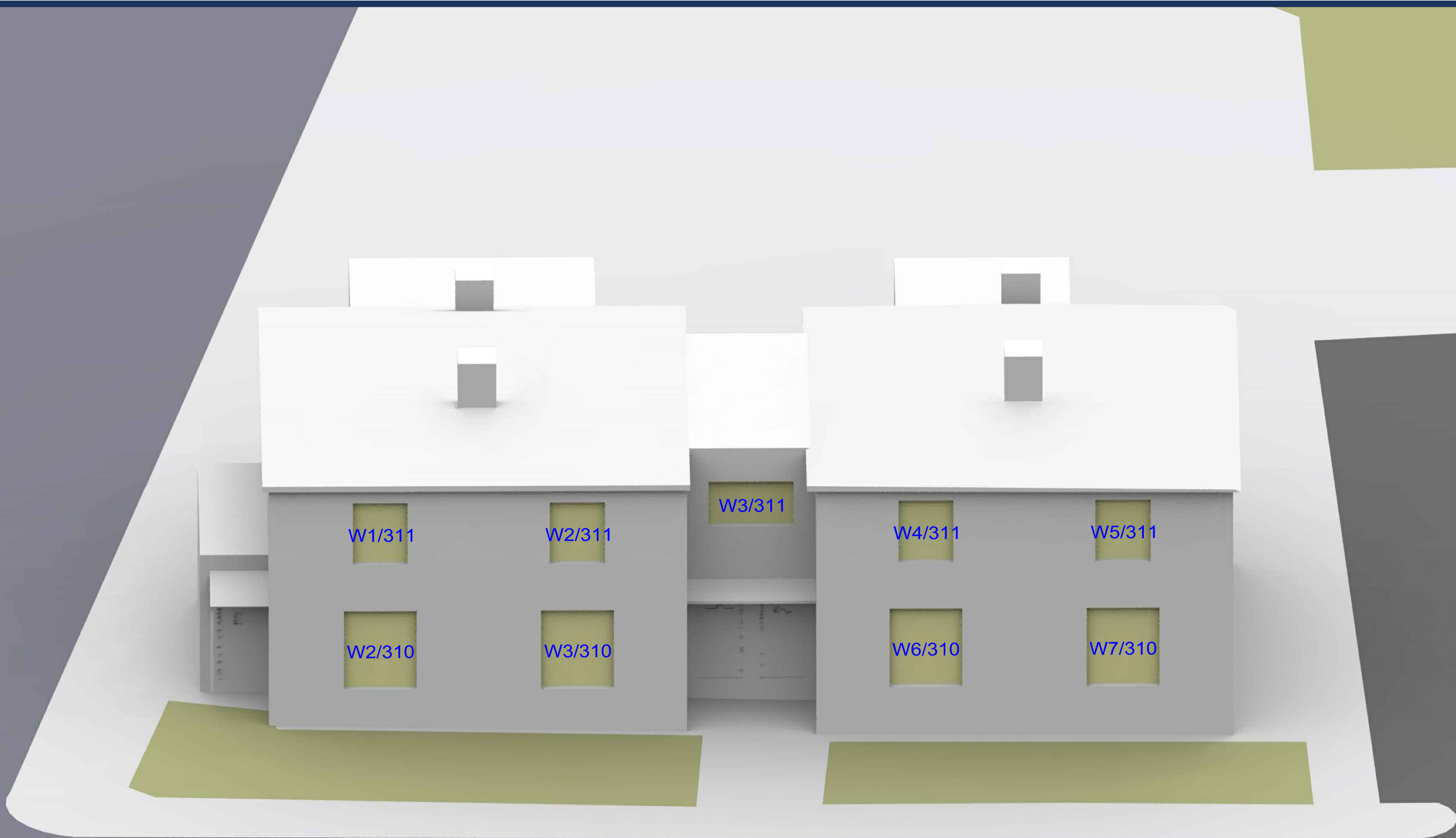
Project: Homebase
 Richmond

Drawn By:	Scale:	Date:
JR	NTS @ A3	Nov 19

Title: Window Locations
 Clarence Court

Dwg No:	Rel:
P1685/WM/42	10





Sources: Point 2 Surveyors
 Survey Info
 Point Cloud Data
 Assael Architecture Limited
 3D Models (received 31/10/19)
 A3004 2-7-1 ENVELOPE AND PARTY-A1, A2 & A3.dwg
 A3004 2-7-1 ENVELOPE AND PARTY-B.dwg
 A3004 2-7-1 ENVELOPE AND PARTY-C1&C2.dwg
 A3004 2-7-1 ENVELOPE AND PARTY-D1 & D2.dwg
 A3004 2-7-1 ENVELOPE AND PARTY-E.dwg
 3D Model + 2D Drawings (received 08/11/19)
 A3004 2-7-1 ENVELOPE AND PARTY-E.dwg
 MNR-AA-BLE-ZZ-DR-A-(4500_4503)-R3.dwg
 MNR-AA-BE1-(GF_05)-DR-A-2601-R6 .dwg

Key: w1/10 Window Label
----- Obscured Window Outline

Scheme Confirmed:	Date:
--	--

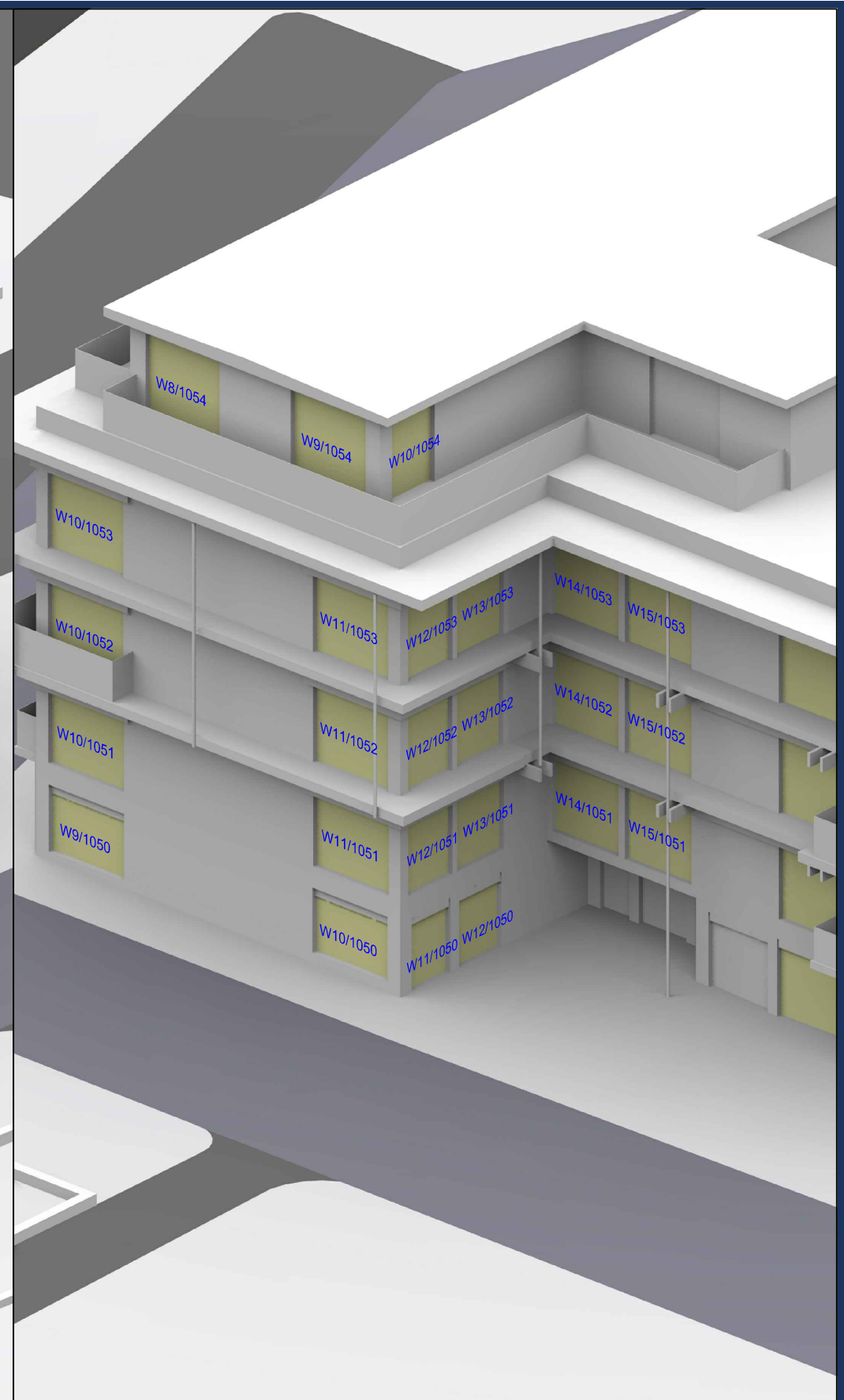
Project: Homebase
 Richmond

Drawn By:	Scale:	Date:
JR	NTS @ A3	Nov 19

Title: Window Locations
 33-39 Crown Terrace

Dwg No:	Rel:
P1685/WM/43	10





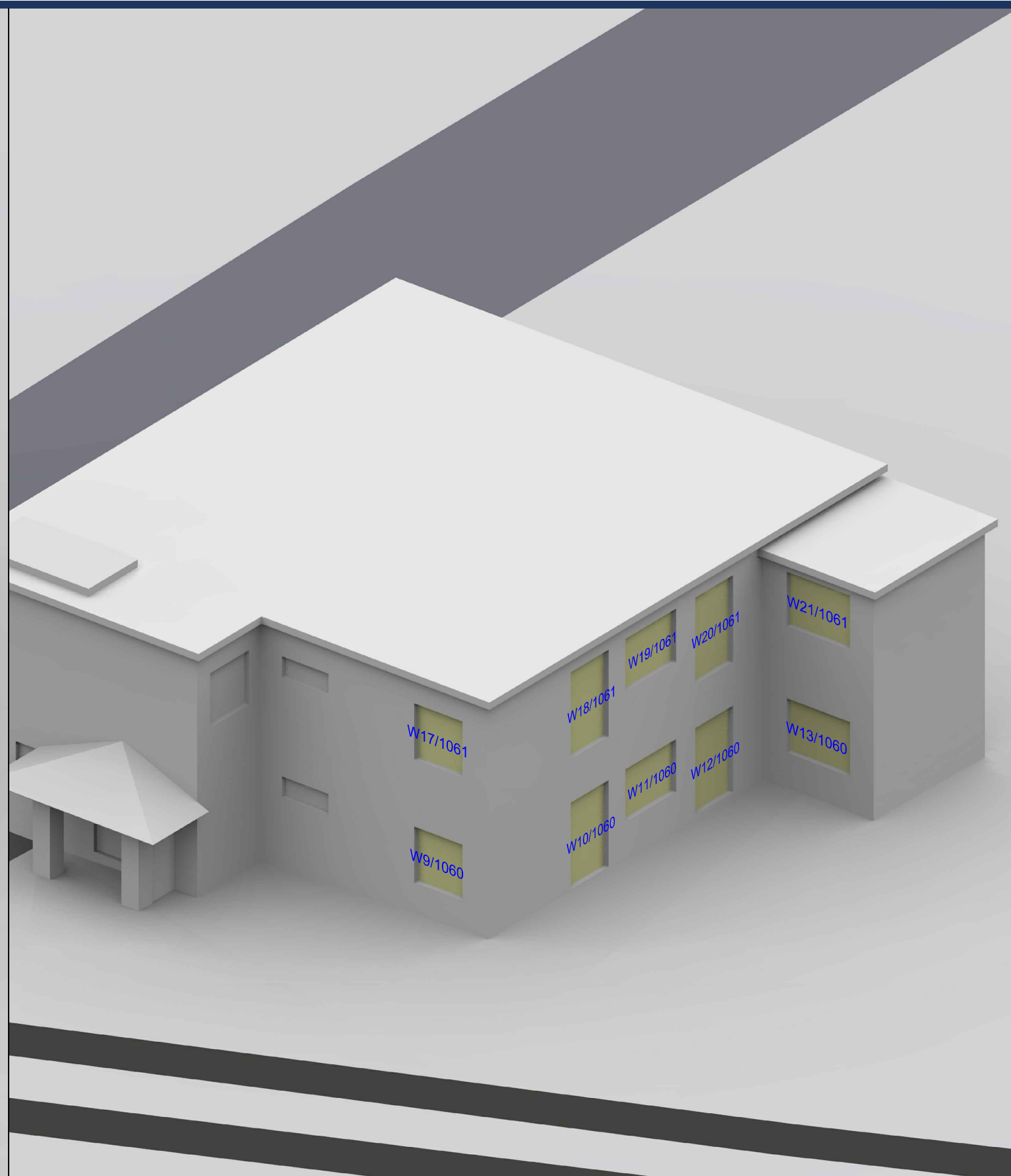
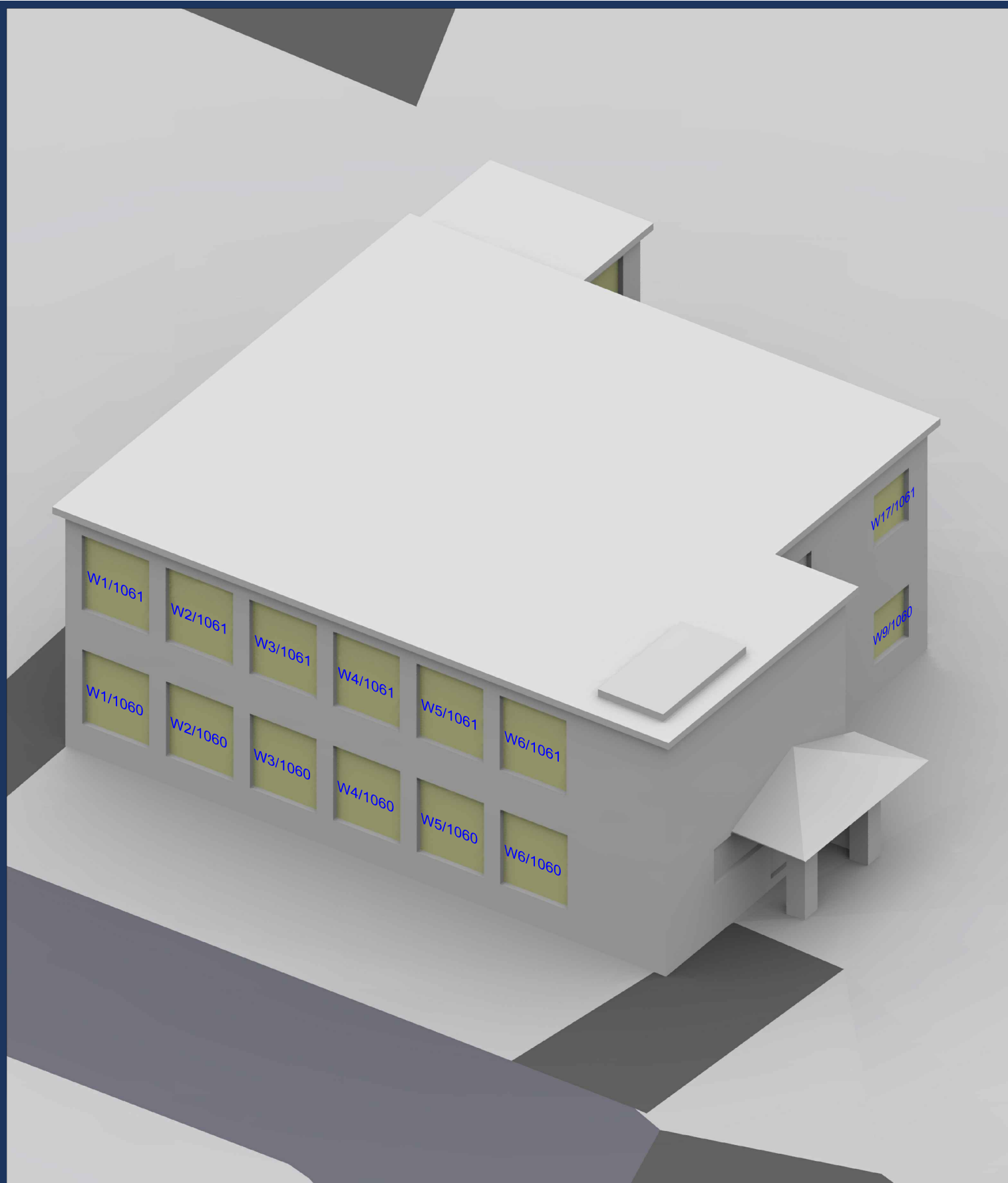
Sources: Point 2 Surveyors
 Survey Info
 Point Cloud Data
 Assael Architecture Limited
 3D Models (received 31/10/19)
 A3004 2-7-1 ENVELOPE AND PARTY-A1, A2 & A3.dwg
 A3004 2-7-1 ENVELOPE AND PARTY-B.dwg
 A3004 2-7-1 ENVELOPE AND PARTY-C1&C2.dwg
 A3004 2-7-1 ENVELOPE AND PARTY-D1 & D2.dwg
 A3004 2-7-1 ENVELOPE AND PARTY-E.dwg
 3D Model + 2D Drawings (received 08/11/19)
 A3004 2-7-1 ENVELOPE AND PARTY-E.dwg
 MNR-AA-BLE-ZZ-DR-A-(4500_4503)-R3.dwg
 MNR-AA-BE1-(GF_05)-DR-A-2601-R6 .dwg

Key: W1/10 Window Label
---- Obscured Window Outline
 Scheme Confirmed: --
 Date: --

Project: Homebase Richmond
 Drawn By: JR
 Scale: NTS @ A3
 Date: Nov 19

Title: Window Locations 1-8 Victoria Villas
 Dwg No: **P1685/WM/44**
 Rel: **10**





Sources: Point 2 Surveyors
 Survey Info
 Point Cloud Data
 Assael Architecture Limited
 3D Models (received 31/10/19)
 A3004 2-7-1 ENVELOPE AND PARTY-A1, A2 & A3.dwg
 A3004 2-7-1 ENVELOPE AND PARTY-B.dwg
 A3004 2-7-1 ENVELOPE AND PARTY-C1&C2.dwg
 A3004 2-7-1 ENVELOPE AND PARTY-D1 & D2.dwg
 A3004 2-7-1 ENVELOPE AND PARTY-E.dwg
 3D Model + 2D Drawings (received 08/11/19)
 A3004 2-7-1 ENVELOPE AND PARTY-E.dwg
 MNR-AA-BLE-ZZ-DR-A-(4500_4503)-R3.dwg
 MNR-AA-BE1-(GF_05)-DR-A-2601-R6 .dwg

Key: W1/10 Window Label
 - - - - - Obscured Window Outline

Scheme Confirmed: --
 Date: --

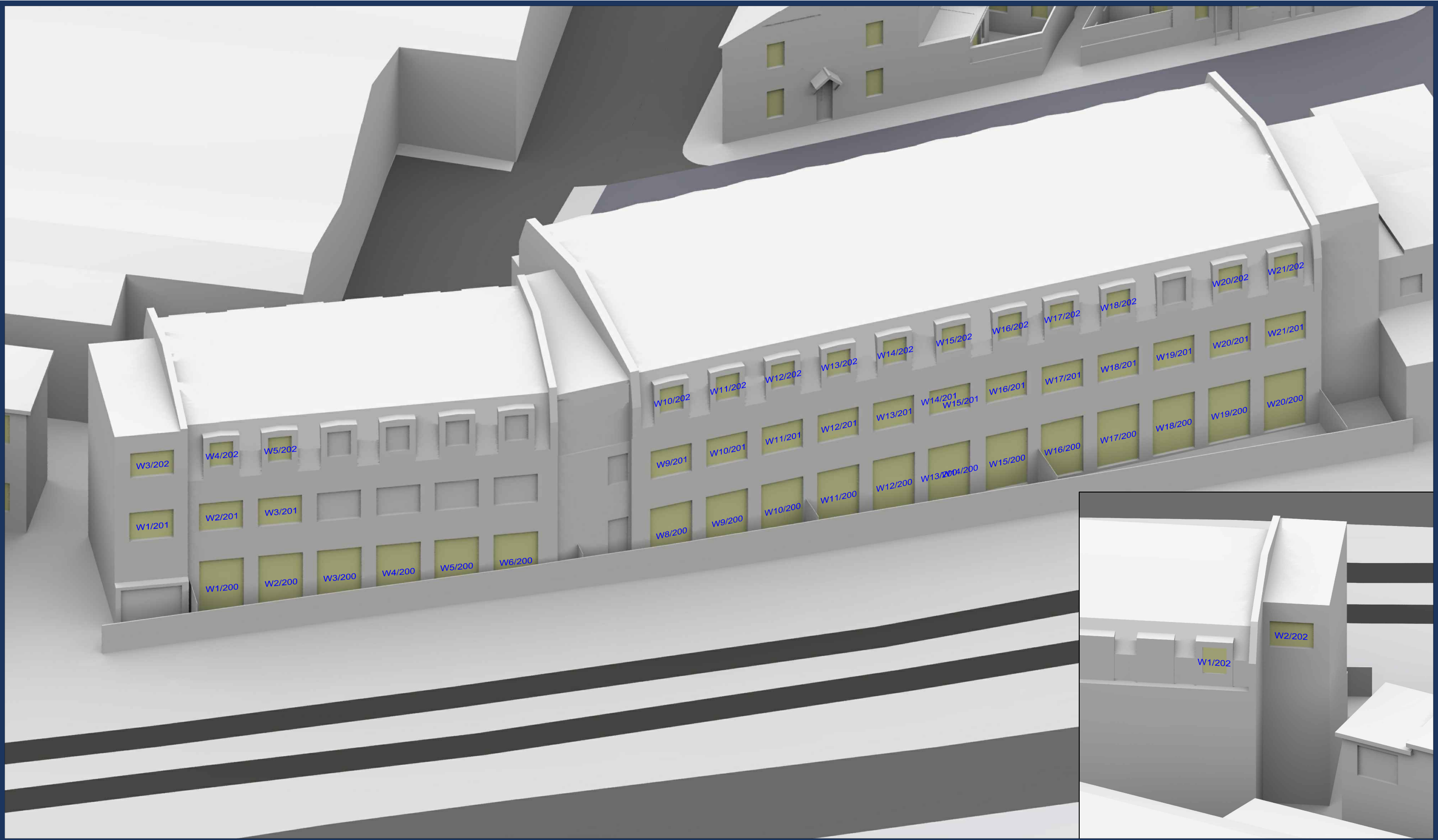
Project: Homebase
 Richmond

Drawn By: JR
 Scale: NTS @ A3
 Date: Nov 19

Title: Window Locations
 19-22 Victoria Villas

Dwg No: P1685 / WM / 45
 Rel: 10





Sources: Point 2 Surveyors
 Survey Info
 Point Cloud Data
 Assael Architecture Limited
 3D Models (received 31/10/19)
 A3004 2-7-1 ENVELOPE AND PARTY-A1, A2 & A3.dwg
 A3004 2-7-1 ENVELOPE AND PARTY-B.dwg
 A3004 2-7-1 ENVELOPE AND PARTY-C1&C2.dwg
 A3004 2-7-1 ENVELOPE AND PARTY-D1 & D2.dwg
 A3004 2-7-1 ENVELOPE AND PARTY-E.dwg
 3D Model + 2D Drawings (received 08/11/19)
 A3004 2-7-1 ENVELOPE AND PARTY-E.dwg
 MNR-AA-BLE-ZZ-DR-A-(4500_4503)-R3.dwg
 MNR-AA-BE1-(GF_05)-DR-A-2601-R6.dwg

Key: W1/10 Window Label
---- Obscured Window Outline

Scheme Confirmed: --
 Date: --

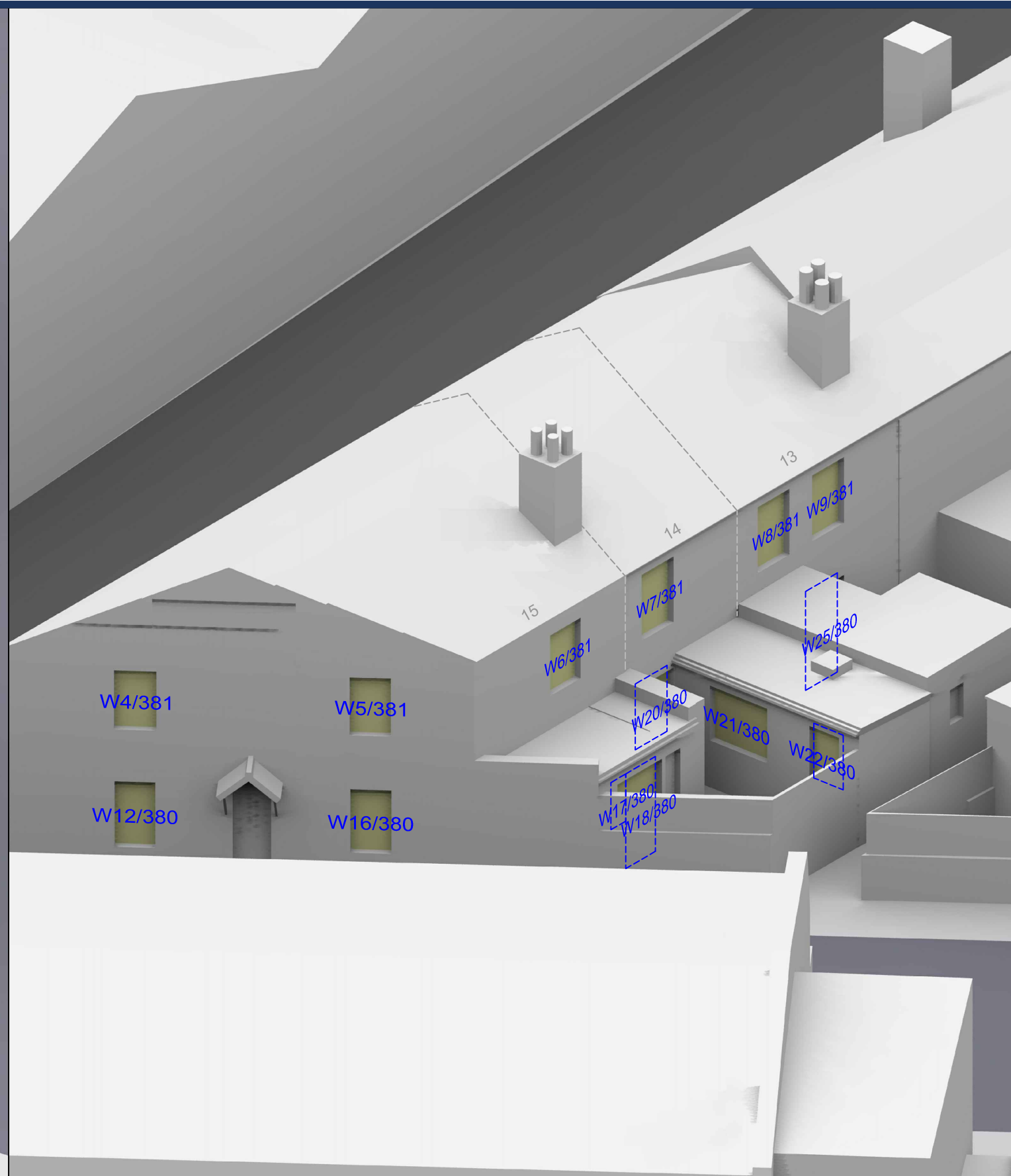
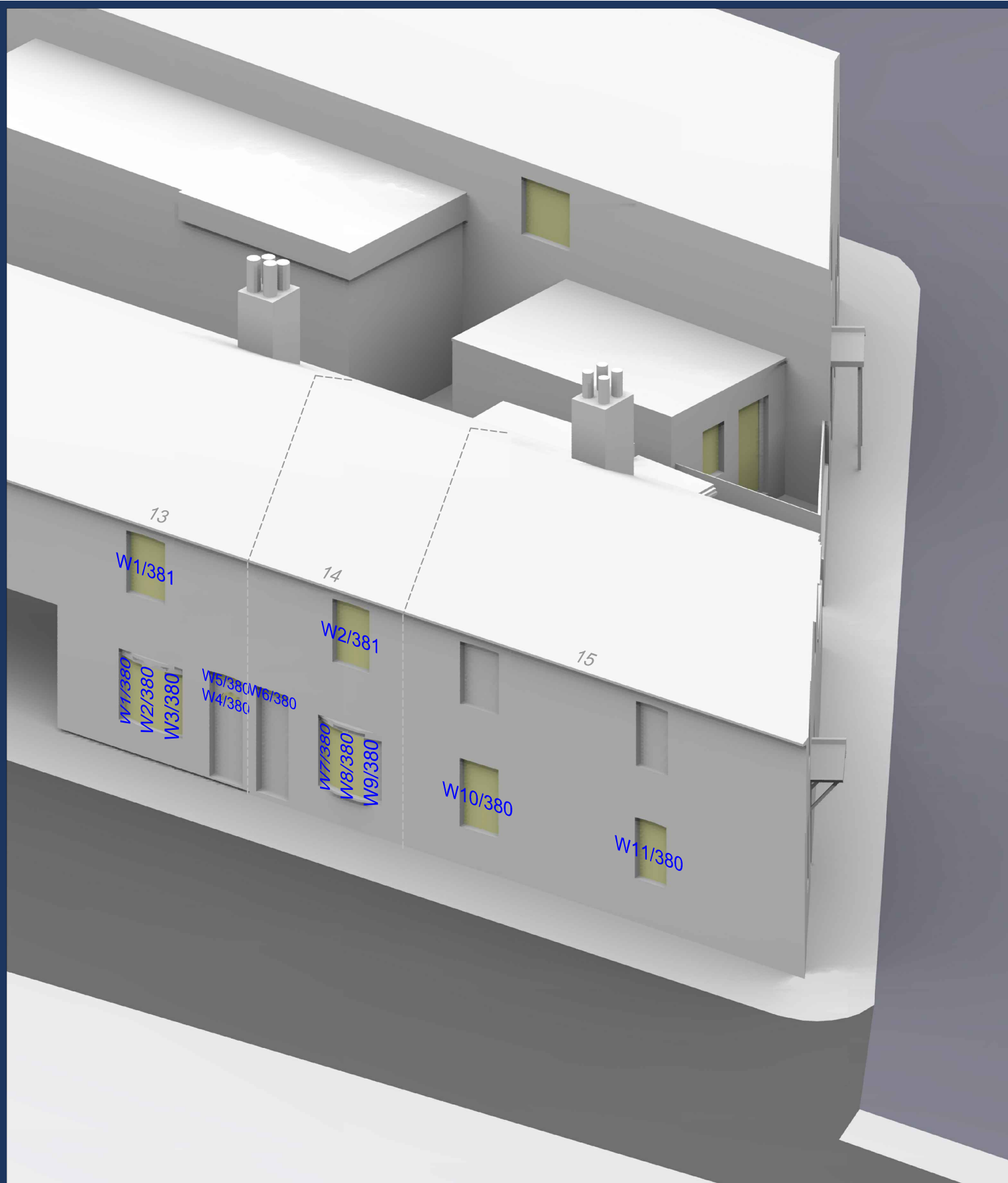
Project: Homebase
 Richmond

Drawn By: JR
 Scale: NTS @ A3
 Date: Nov 19

Title: Window Locations
 2-6 Bardolph Road

Dwg No: P1685 / WM / 46
 Rel: 10





Sources: Point 2 Surveyors
 Survey Info
 Point Cloud Data
 Assael Architecture Limited
 3D Models (received 31/10/19)
 A3004 2-7-1 ENVELOPE AND PARTY-A1, A2 & A3.dwg
 A3004 2-7-1 ENVELOPE AND PARTY-B.dwg
 A3004 2-7-1 ENVELOPE AND PARTY-C1&C2.dwg
 A3004 2-7-1 ENVELOPE AND PARTY-D1 & D2.dwg
 A3004 2-7-1 ENVELOPE AND PARTY-E.dwg
 3D Model + 2D Drawings (received 08/11/19)
 A3004 2-7-1 ENVELOPE AND PARTY-E.dwg
 MNR-AA-BLE-ZZ-DR-A-(4500_4503)-R3.dwg
 MNR-AA-BE1-(GF_05)-DR-A-2601-R6 .dwg

Key: W1/10 Window Label
 - - - - Obscured Window Outline

Scheme Confirmed: --
Date: --

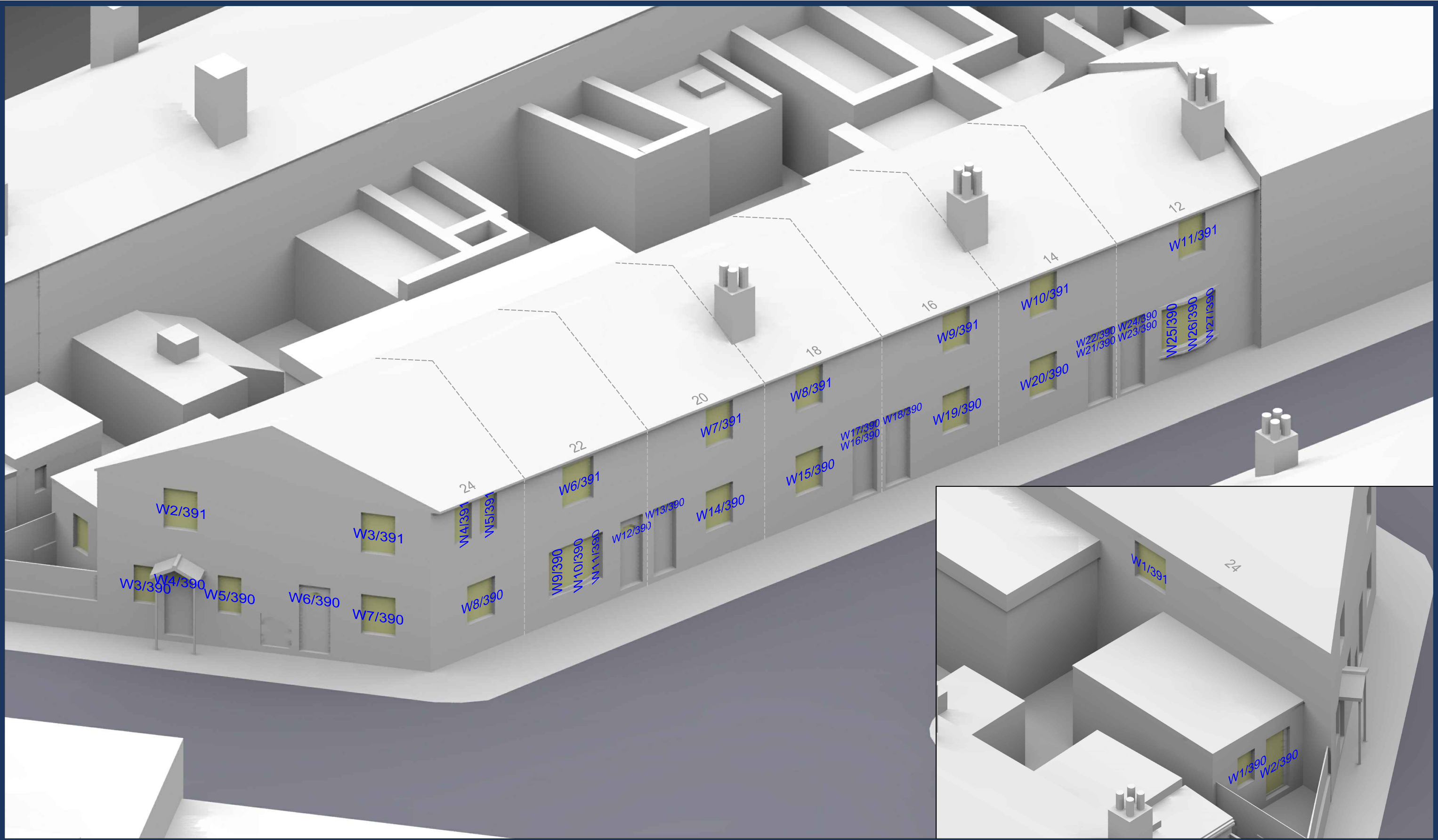
Project: Homebase
 Richmond

Drawn By: JR
Scale: NTS @ A3
Date: Nov 19

Title: Window Locations
 13-15 Trinity Cottages

Dwg No: P1685/WM/47
Rel: 10





Sources: Point 2 Surveyors
 Survey Info
 Point Cloud Data
 Assael Architecture Limited
 3D Models (received 31/10/19)
 A3004 2-7-1 ENVELOPE AND PARTY-A1, A2 & A3.dwg
 A3004 2-7-1 ENVELOPE AND PARTY-B.dwg
 A3004 2-7-1 ENVELOPE AND PARTY-C1&C2.dwg
 A3004 2-7-1 ENVELOPE AND PARTY-D1 & D2.dwg
 A3004 2-7-1 ENVELOPE AND PARTY-E.dwg
 3D Model + 2D Drawings (received 08/11/19)
 A3004 2-7-1 ENVELOPE AND PARTY-E.dwg
 MNR-AA-BLE-ZZ-DR-A-(4500_4503)-R3.dwg
 MNR-AA-BE1-(GF_05)-DR-A-2601-R6 .dwg

Key: W1/10 Window Label
 - - - - - Obscured Window Outline

Project: Homebase
 Richmond

Title: Window Locations
 12-24 Trinity Cottages

Scheme Confirmed: --

Date: --

Drawn By: JR

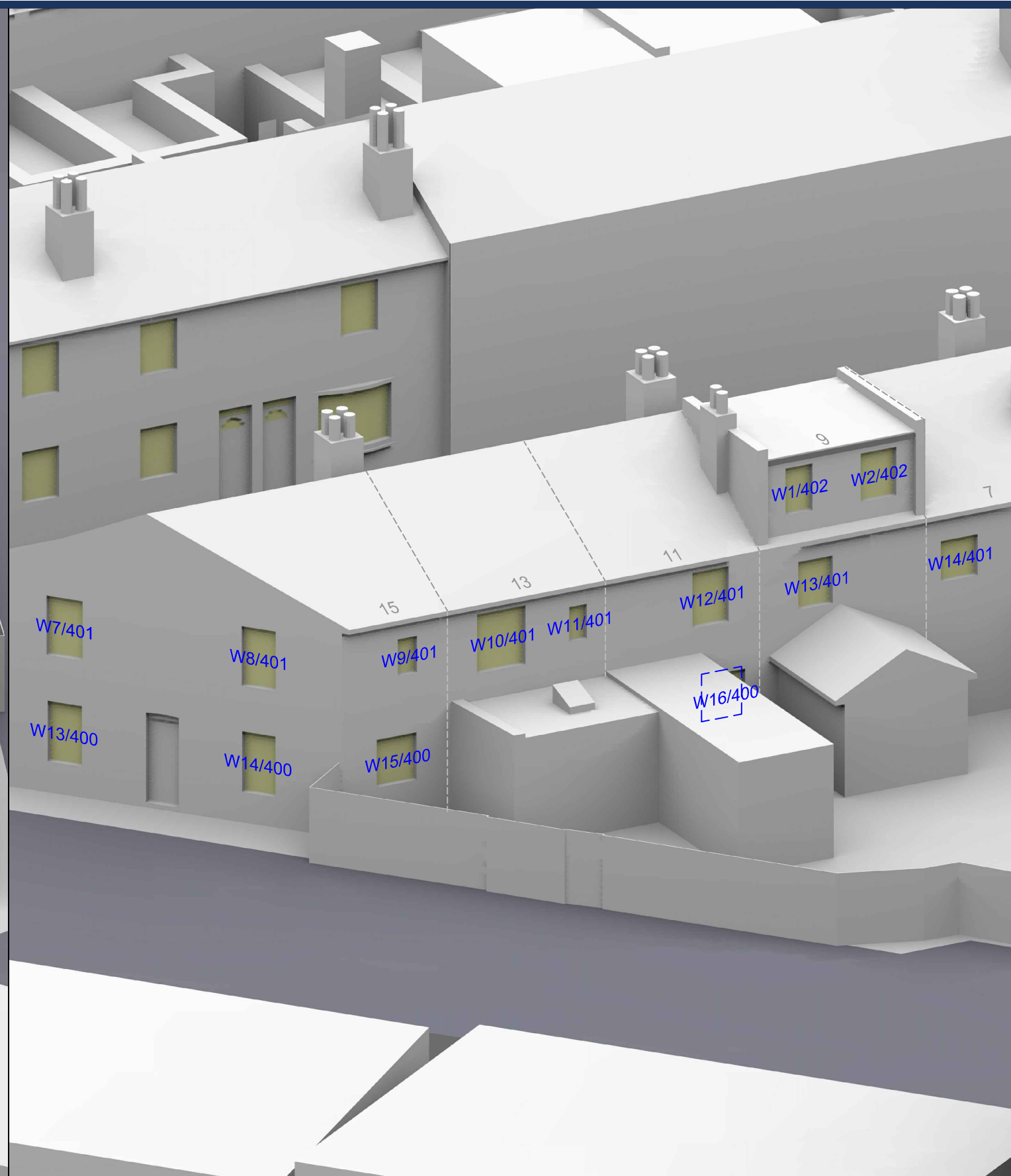
Scale: NTS @ A3

Date: Nov 19

Dwg No: P1685 / WM / 48

Rel: 10





Sources: Point 2 Surveyors
 Survey Info
 Point Cloud Data
 Assael Architecture Limited
 3D Models (received 31/10/19)
 A3004 2-7-1 ENVELOPE AND PARTY-A1, A2 & A3.dwg
 A3004 2-7-1 ENVELOPE AND PARTY-B.dwg
 A3004 2-7-1 ENVELOPE AND PARTY-C1&C2.dwg
 A3004 2-7-1 ENVELOPE AND PARTY-D1 & D2.dwg
 A3004 2-7-1 ENVELOPE AND PARTY-E.dwg
 3D Model + 2D Drawings (received 08/11/19)
 A3004 2-7-1 ENVELOPE AND PARTY-E.dwg
 MNR-AA-BLE-ZZ-DR-A-(4500_4503)-R3.dwg
 MNR-AA-BE1-(GF_05)-DR-A-2601-R6 .dwg

Key: w1/10 Window Label
 Obscured Window Outline

Scheme Confirmed: --
 Date: --

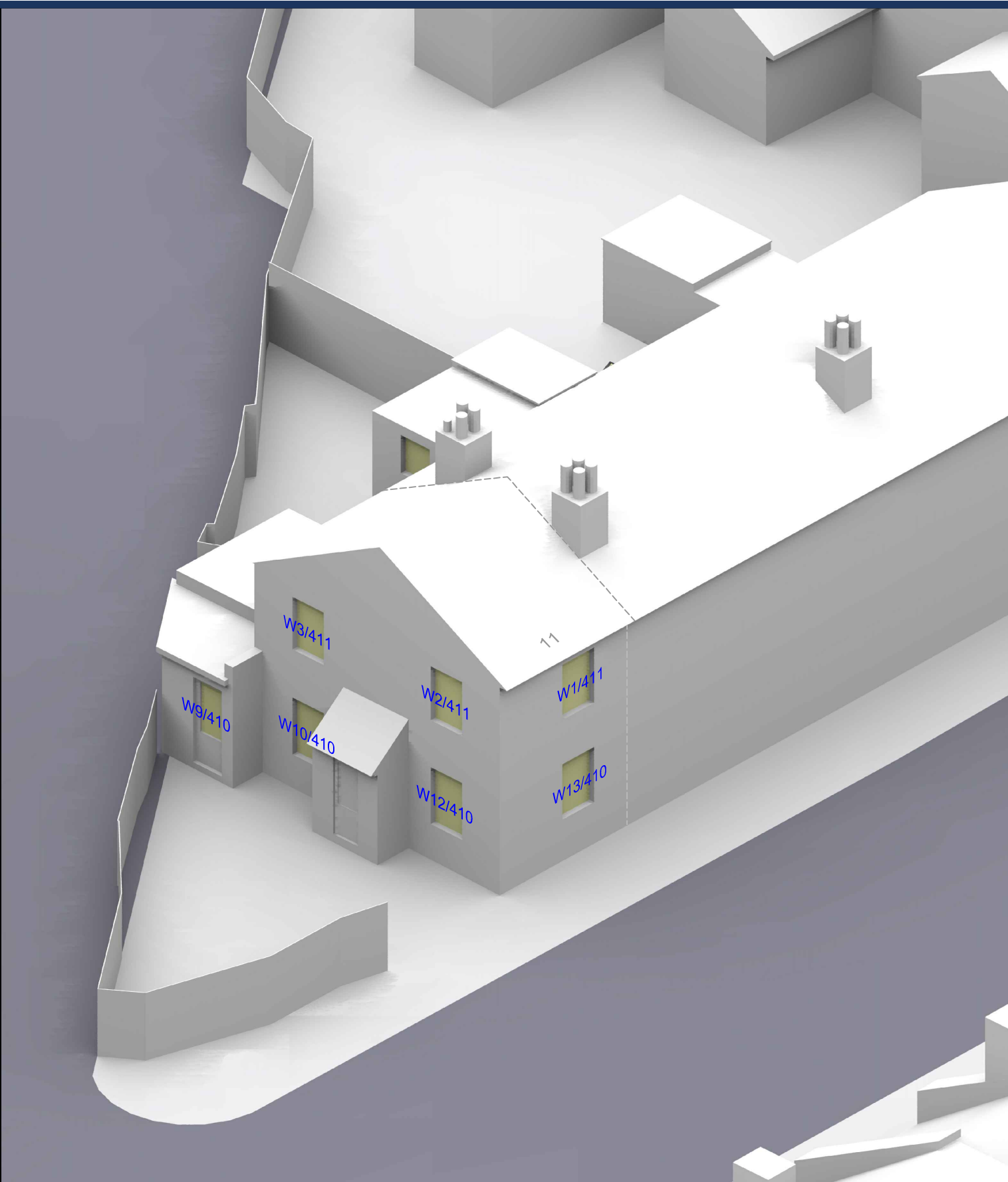
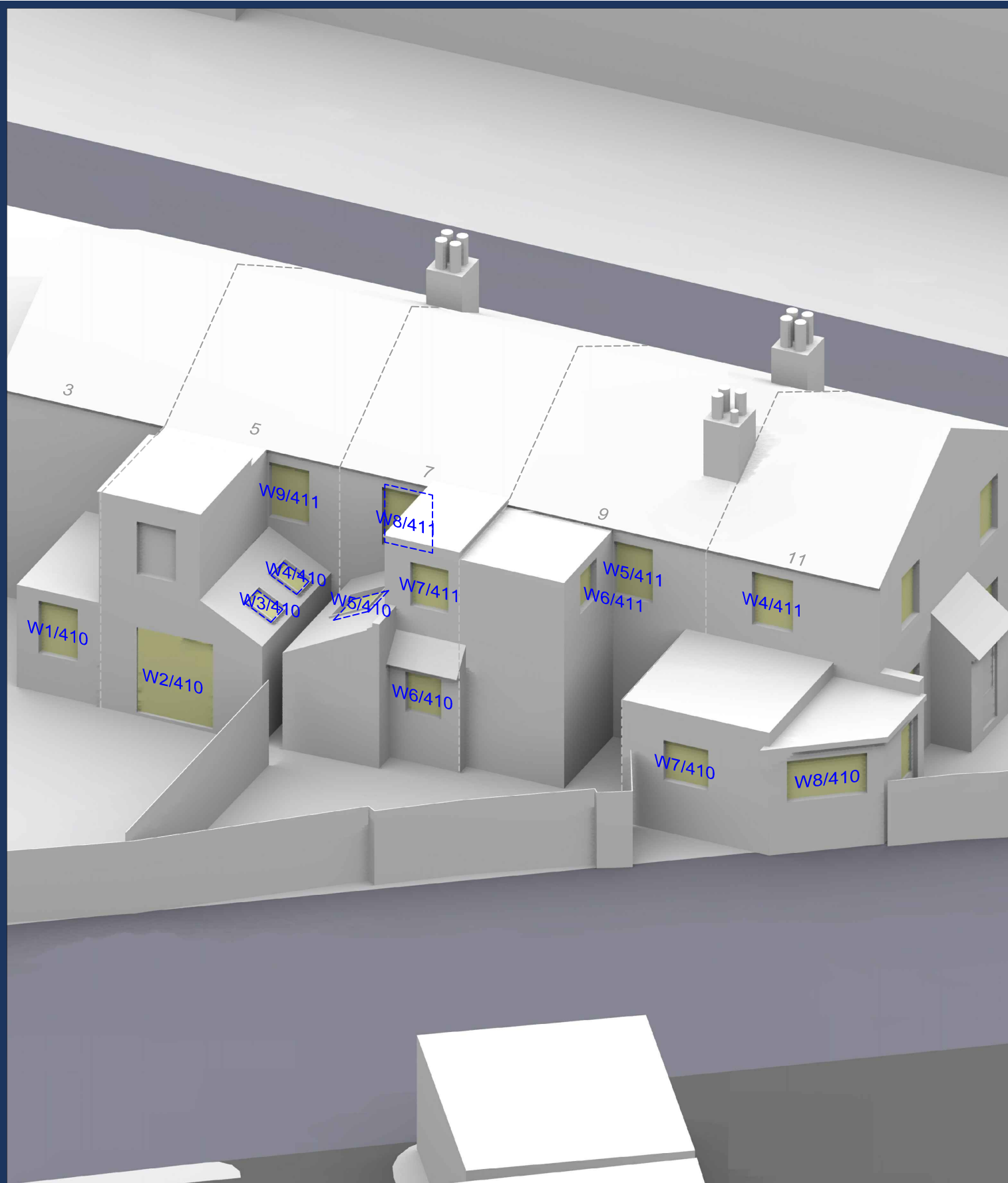
Project: Homebase
 Richmond

Drawn By: JR
 Scale: NTS @ A3
 Date: Nov 19

Title: Window Locations
 7-15 Trinity Road

Dwg No: **P1685/WM/49**
 Rel: **10**





Sources: Point 2 Surveyors
 Survey Info
 Point Cloud Data
 Assael Architecture Limited
 3D Models (received 31/10/19)
 A3004 2-7-1 ENVELOPE AND PARTY-A1, A2 & A3.dwg
 A3004 2-7-1 ENVELOPE AND PARTY-B.dwg
 A3004 2-7-1 ENVELOPE AND PARTY-C1&C2.dwg
 A3004 2-7-1 ENVELOPE AND PARTY-D1 & D2.dwg
 A3004 2-7-1 ENVELOPE AND PARTY-E.dwg
 3D Model + 2D Drawings (received 08/11/19)
 A3004 2-7-1 ENVELOPE AND PARTY-E.dwg
 MNR-AA-BLE-ZZ-DR-A-(4500_4503)-R3.dwg
 MNR-AA-BE1-(GF_05)-DR-A-2601-R6 .dwg

Key: w1/10 Window Label
 Obscured Window Outline

Scheme Confirmed: --
 Date: --

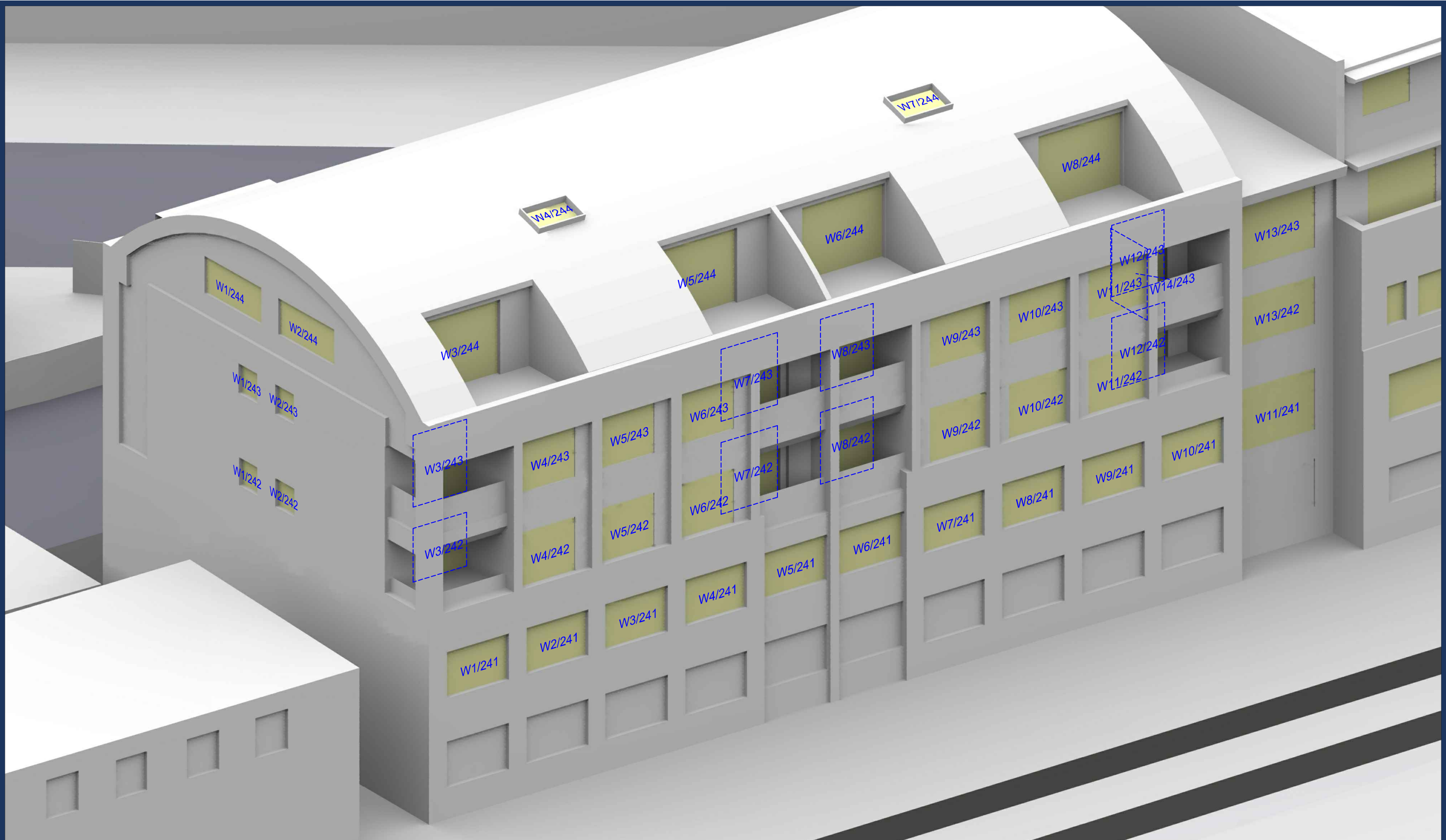
Project: Homebase
 Richmond

Drawn By: JR
 Scale: NTS @ A3
 Date: Nov 19

Title: Window Locations
 3-11 St Georges Road

Dwg No: **P1685/WM/50**
 Rel: **10**





Sources: Point 2 Surveyors
 Survey Info
 Point Cloud Data
 Assael Architecture Limited
 3D Models (received 31/10/19)
 A3004 2-7-1 ENVELOPE AND PARTY-A1, A2 & A3.dwg
 A3004 2-7-1 ENVELOPE AND PARTY-B.dwg
 A3004 2-7-1 ENVELOPE AND PARTY-C1&C2.dwg
 A3004 2-7-1 ENVELOPE AND PARTY-D1 & D2.dwg
 A3004 2-7-1 ENVELOPE AND PARTY-E.dwg
 3D Model + 2D Drawings (received 08/11/19)
 A3004 2-7-1 ENVELOPE AND PARTY-E.dwg
 MNR-AA-BLE-ZZ-DR-A-(4500_4503)-R3.dwg
 MNR-AA-BE1-(GF_05)-DR-A-2601-R6 .dwg

Key: w1/10 Window Label
 Obscured Window Outline

Project: Homebase
 Richmond

Title: Window Locations
 Falstaff House

Scheme Confirmed: --

Date: --

Drawn By: JR

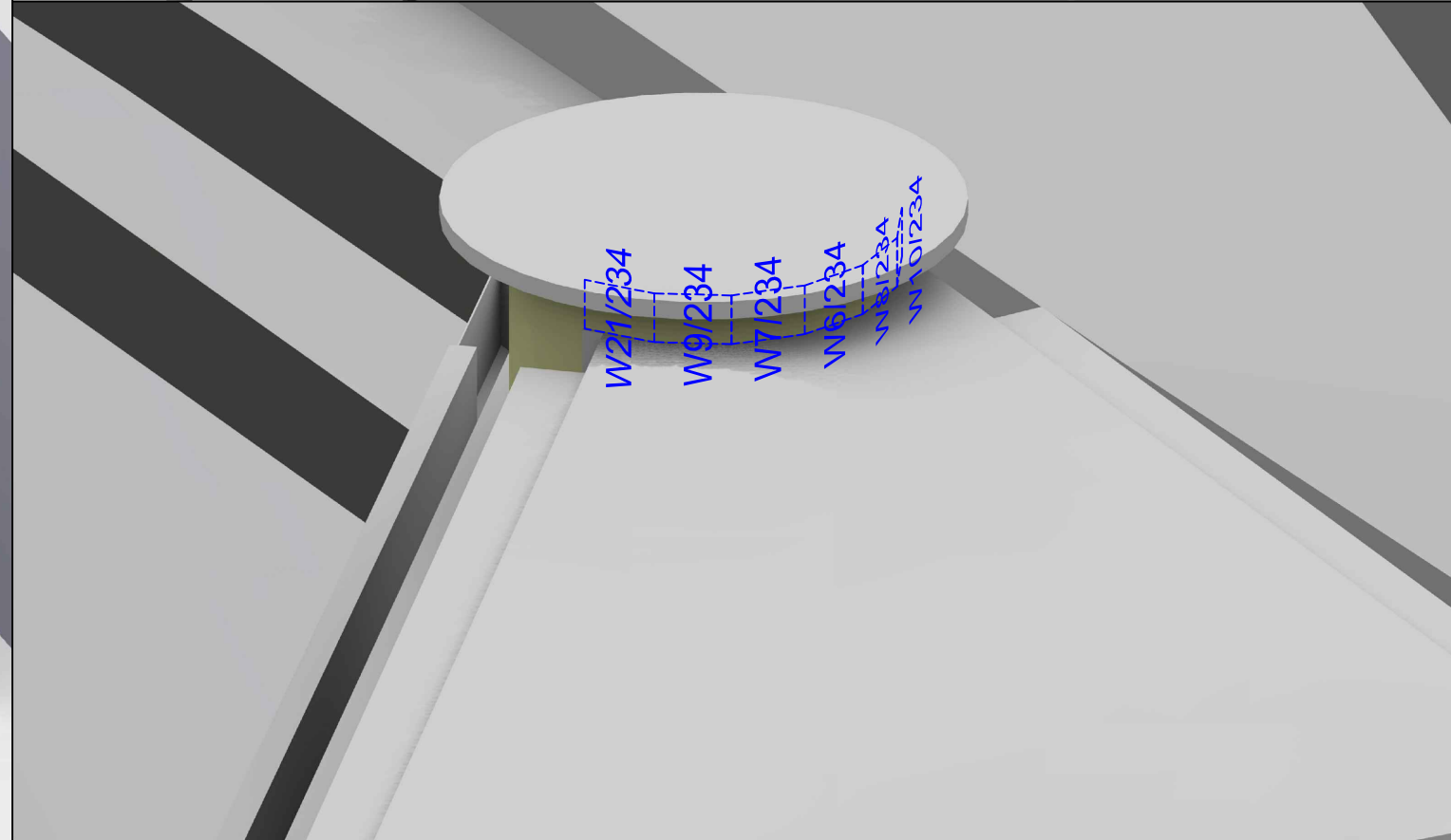
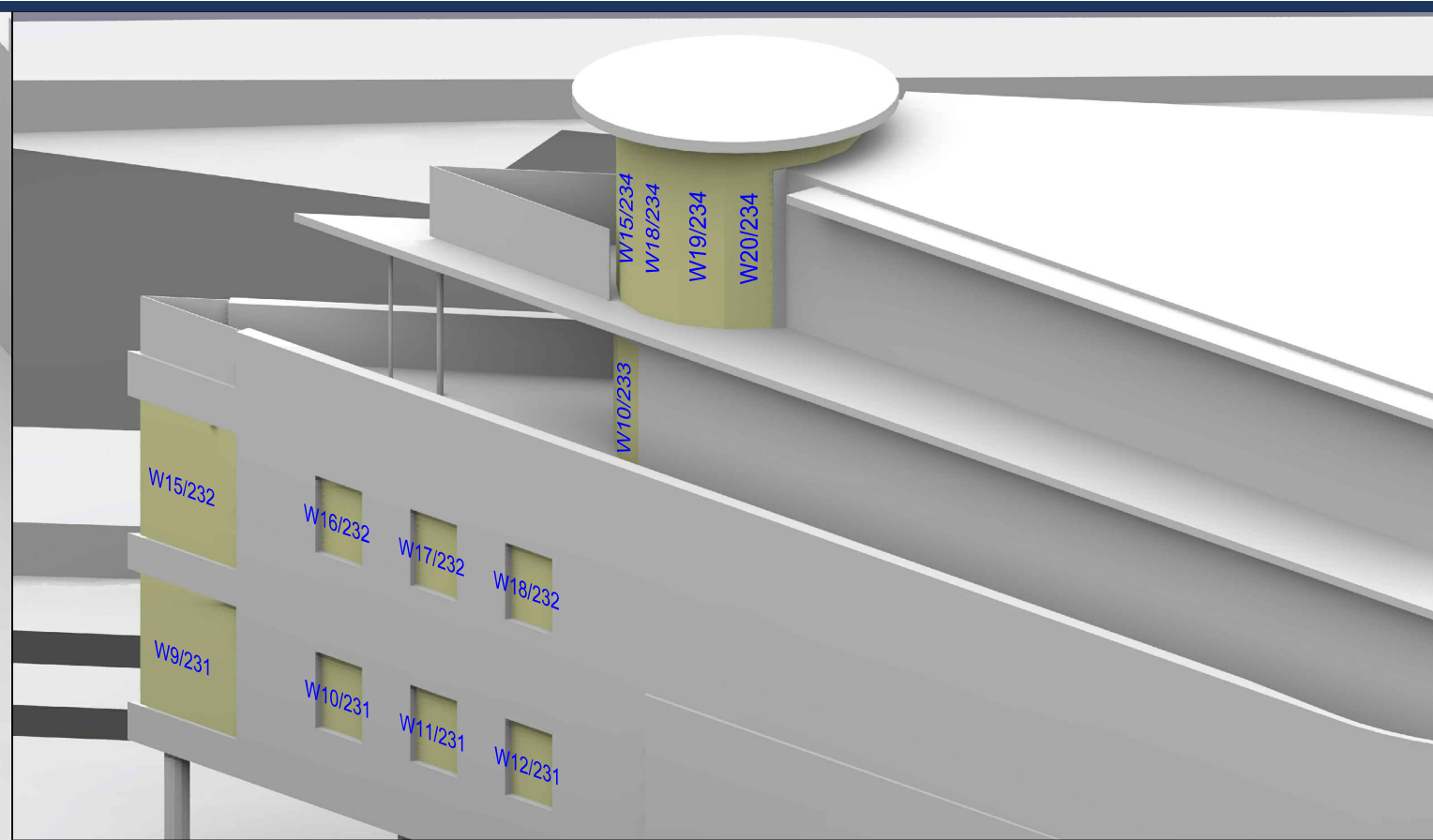
Scale: NTS @ A3

Date: Nov 19

Dwg No: P1685/WM/51

Rel: 10





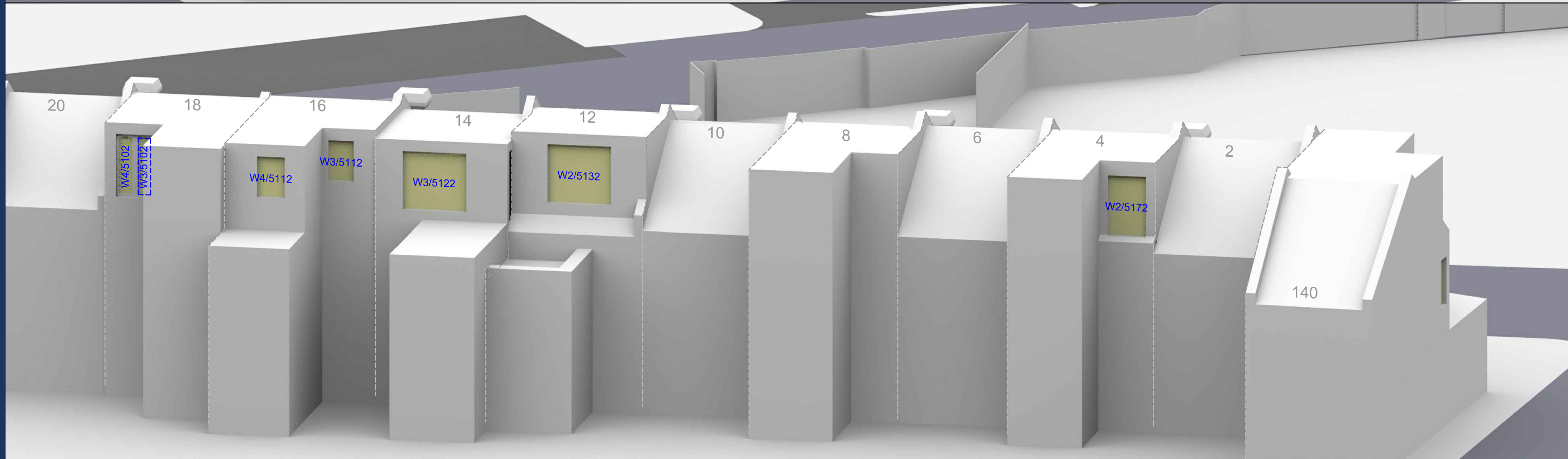
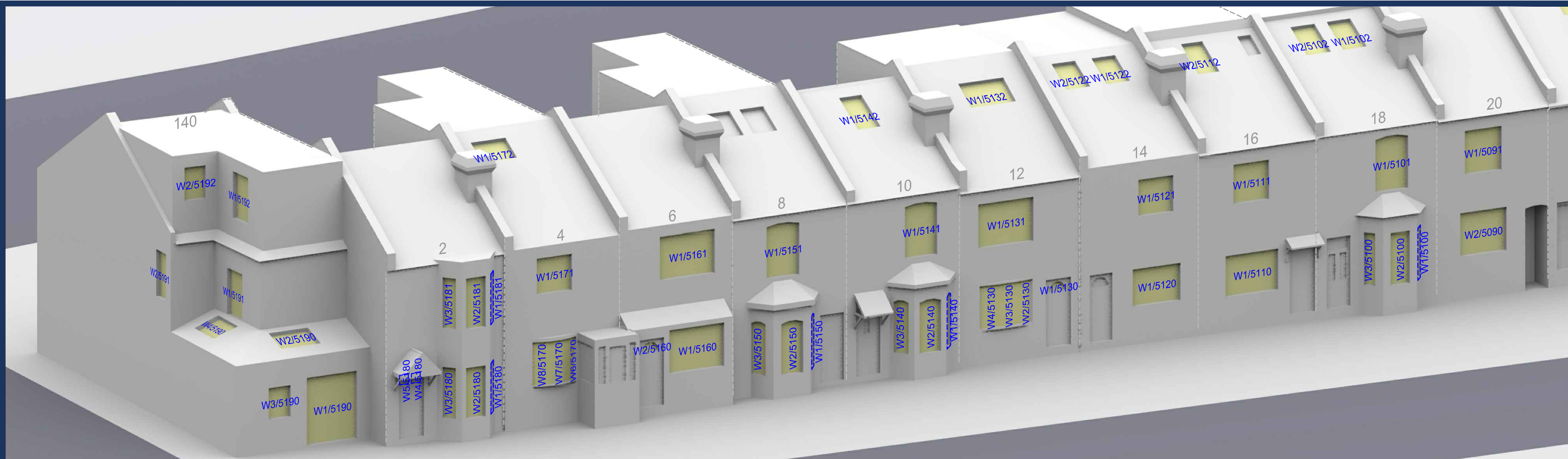
Sources: Point 2 Surveyors
 Survey Info
 Point Cloud Data
 Assael Architecture Limited
 3D Models (received 31/10/19)
 A3004 2-7-1 ENVELOPE AND PARTY-A1, A2 & A3.dwg
 A3004 2-7-1 ENVELOPE AND PARTY-B.dwg
 A3004 2-7-1 ENVELOPE AND PARTY-C1&C2.dwg
 A3004 2-7-1 ENVELOPE AND PARTY-D1 & D2.dwg
 A3004 2-7-1 ENVELOPE AND PARTY-E.dwg
 3D Model + 2D Drawings (received 08/11/19)
 A3004 2-7-1 ENVELOPE AND PARTY-E.dwg
 MNR-AA-BLE-ZZ-DR-A-(4500_4503)-R3.dwg
 MNR-AA-BE1-(GF_05)-DR-A-2601-R6.dwg

Key: W1/10 Window Label
 - - - - Obscured Window Outline
 Scheme Confirmed: --
 Date: --

Project: Homebase Richmond
 Drawn By: JR
 Scale: NTS @ A3
 Date: Nov 19

Title: Window Locations St Georges House
 Dwg No: P1685/WM/52
 Rel: 10





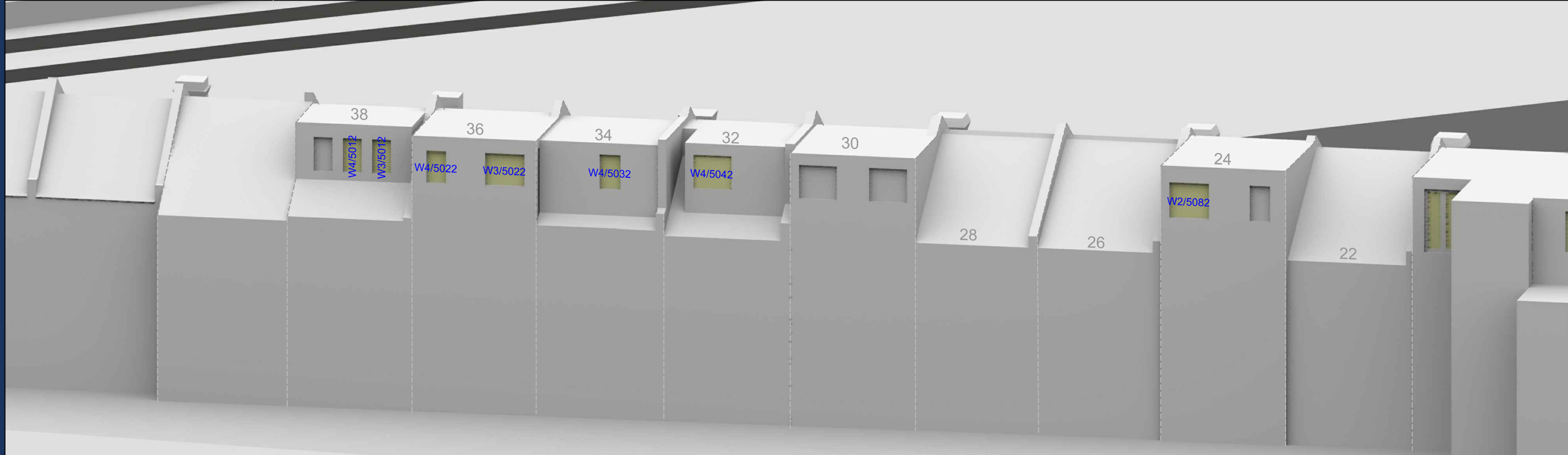
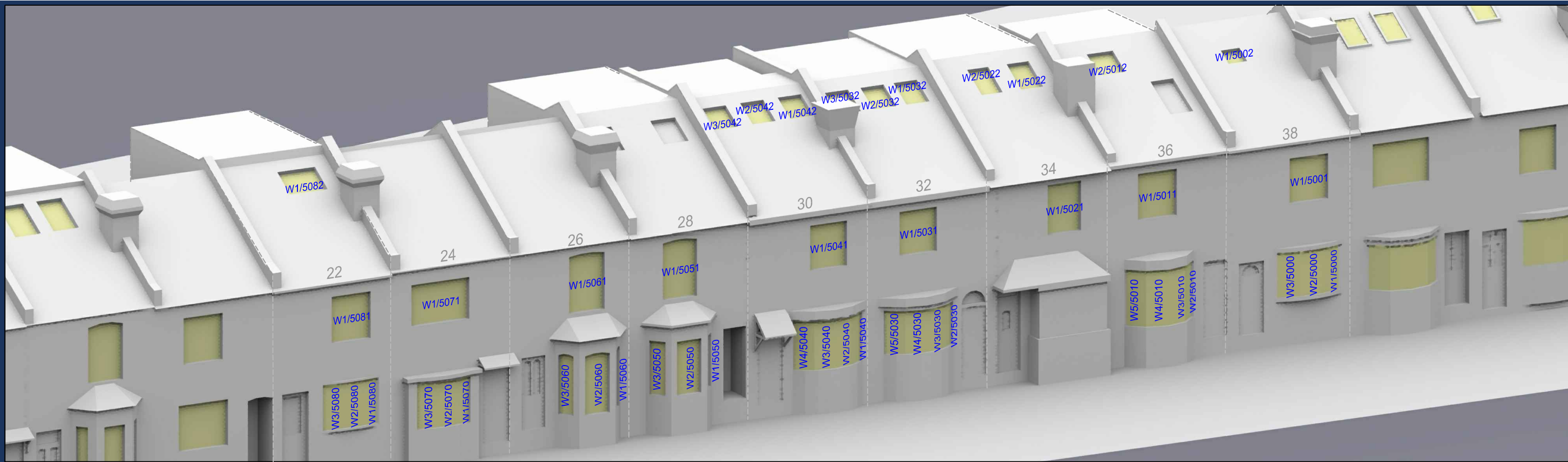
Sources: Point 2 Surveyors
 Survey Info
 Point Cloud Data
 Assael Architecture Limited
 3D Models (received 31/10/19)
 A3004 2-7-1 ENVELOPE AND PARTY-A1, A2 & A3.dwg
 A3004 2-7-1 ENVELOPE AND PARTY-B.dwg
 A3004 2-7-1 ENVELOPE AND PARTY-C1&C2.dwg
 A3004 2-7-1 ENVELOPE AND PARTY-D1 & D2.dwg
 A3004 2-7-1 ENVELOPE AND PARTY-E.dwg
 3D Model + 2D Drawings (received 08/11/19)
 A3004 2-7-1 ENVELOPE AND PARTY-E.dwg
 MNR-AA-BLE-ZZ-DR-A-(4500_4503)-R3.dwg
 MNR-AA-BE1-(GF_05)-DR-A-2601-R6 .dwg

Key: W1/10 Window Label
 - - - - Obscured Window Outline
 Scheme Confirmed: --
 Date: --

Project: Homebase Richmond
 Drawn By: JR
 Scale: NTS @ A3
 Date: Nov 19

Title: Window Locations
 2-20 St Georges Road and 140 Lower Mortlake Road
 Dwg No: P1685/WM/53
 Rel: 10





Sources: Point 2 Surveyors
 Survey Info
 Point Cloud Data
 Assael Architecture Limited
 3D Models (received 31/10/19)
 A3004 2-7-1 ENVELOPE AND PARTY-A1, A2 & A3.dwg
 A3004 2-7-1 ENVELOPE AND PARTY-B.dwg
 A3004 2-7-1 ENVELOPE AND PARTY-C1&C2.dwg
 A3004 2-7-1 ENVELOPE AND PARTY-D1 & D2.dwg
 A3004 2-7-1 ENVELOPE AND PARTY-E.dwg
 3D Model + 2D Drawings (received 08/11/19)
 A3004 2-7-1 ENVELOPE AND PARTY-E.dwg
 MNR-AA-BLE-ZZ-DR-A-(4500_4503)-R3.dwg
 MNR-AA-BE1-(GF_05)-DR-A-2601-R6 .dwg

Key: W1/10 Window Label
 - - - - Obscured Window Outline

Scheme Confirmed: --
 Date: --

Project: Homebase
 Richmond

Drawn By: JR
 Scale: NTS @ A3
 Date: Nov 19

Title: Window Locations
 22-38 St Georges Road

Dwg No: P1685 / WM / 54
 Rel: 10





Sources: Point 2 Surveyors
 Survey Info
 Point Cloud Data
 Assael Architecture Limited
 3D Models (received 31/10/19)
 A3004 2-7-1 ENVELOPE AND PARTY-A1, A2 & A3.dwg
 A3004 2-7-1 ENVELOPE AND PARTY-B.dwg
 A3004 2-7-1 ENVELOPE AND PARTY-C1&C2.dwg
 A3004 2-7-1 ENVELOPE AND PARTY-D1 & D2.dwg
 A3004 2-7-1 ENVELOPE AND PARTY-E.dwg
 3D Model + 2D Drawings (received 08/11/19)
 A3004 2-7-1 ENVELOPE AND PARTY-E.dwg
 MNR-AA-BLE-ZZ-DR-A-(4500_4503)-R3.dwg
 MNR-AA-BE1-(GF_05)-DR-A-2601-R6 .dwg

Key: w1/10 Window Label
- - - - Obscured Window Outline

Scheme Confirmed:	Date:
--	--

Project: Homebase
 Richmond

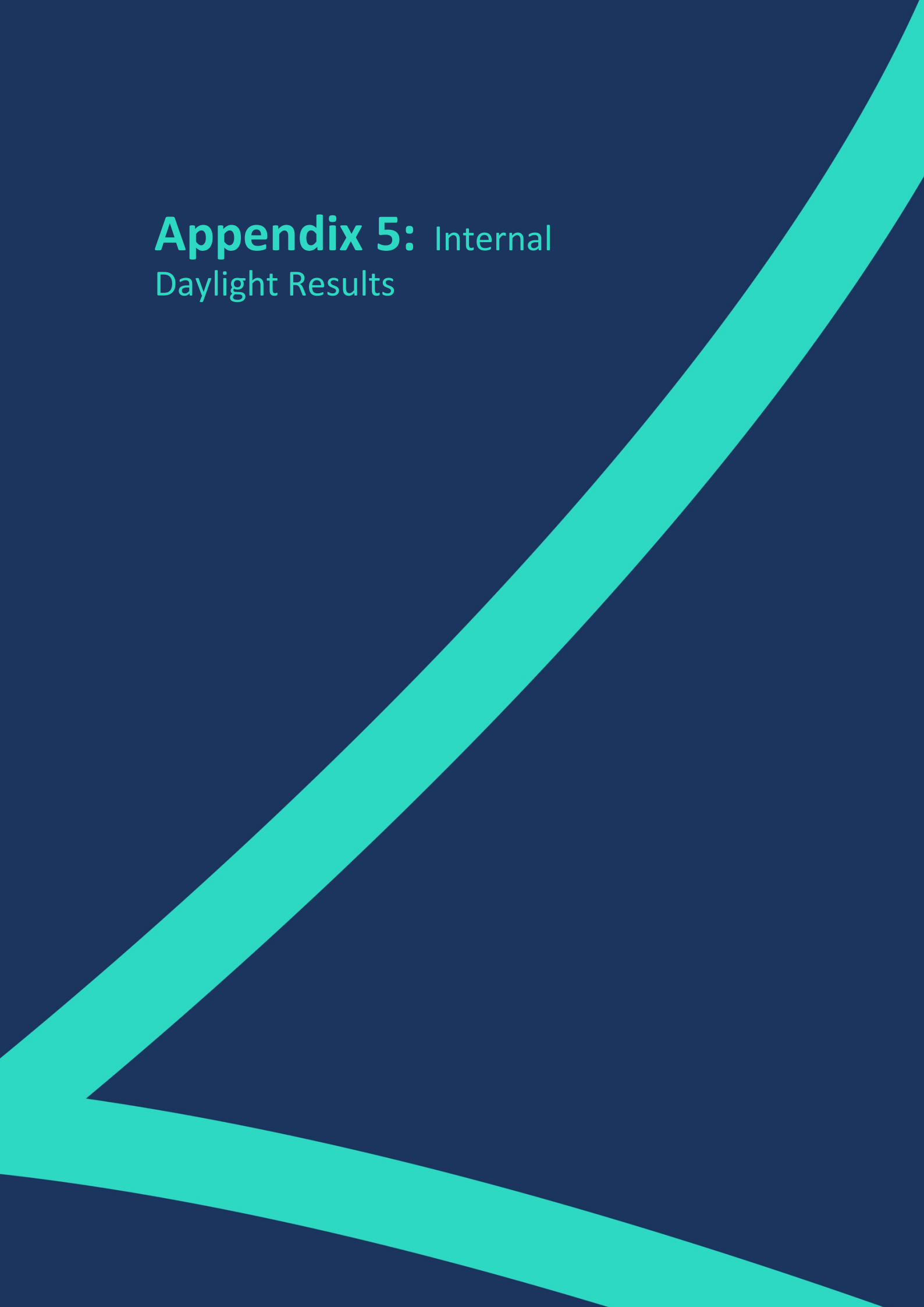
Drawn By:	Scale:	Date:
JR	NTS @ A3	Nov 19

Title: Window Locations
 40-58 St Georges Road

Dwg No:	Rel:
P1685/WM/55	10



Appendix 5: Internal Daylight Results





DAYLIGHT ANALYSIS

MANOR ROAD, HOMEBASE, RICHMOND
 EXISTING vs PROPOSED SCHEME 08/11/19
 P1685 - rel10

INTERNAL DAYLIGHT

Room	Room Use	Window	VSC(%)	ADF(%)	Total ADF(%)
R1/2030	LIVINGROOM	W1/2030	33.91	1.9	
R1/2030	LIVINGROOM	W2/2030	33.27	1.8	3.7
R1/2040	LIVINGROOM	W1/2040	33.62	1.8	
R1/2040	LIVINGROOM	W2/2040	32.98	1.8	3.6
R1/2050	LIVINGROOM	W1/2050	32.62	1.8	
R1/2050	LIVINGROOM	W2/2050	32.48	1.8	3.6
R1/2100	BEDROOM	W1/2100	13.26	2.0	2.0
R2/2100	BEDROOM	W2/2100	18.61	2.5	2.5
R3/2100	BEDROOM	W3/2100	20.49	2.6	2.6
R4/2100	BEDROOM	W4/2100	23.97	2.1	2.1
R5/2100	LKD	W5/2100	21.88	1.0	
R5/2100	LKD	W6/2100	39.24	1.3	
R5/2100	LKD	W7/2100	39.25	1.3	3.6
R6/2100	BEDROOM	W8/2100	15.27	0.8	
R6/2100	BEDROOM	W9/2100	18.40	1.4	2.2
R7/2100	BEDROOM	W10/2100	18.13	1.6	1.6
R8/2100	BEDROOM	W11/2100	17.20	0.8	
R8/2100	BEDROOM	W12/2100	18.59	1.4	2.2
R9/2100	BEDROOM	W13/2100	18.18	1.6	1.6
R10/2100	BEDROOM	W14/2100	17.21	0.8	
R10/2100	BEDROOM	W15/2100	18.59	1.4	2.2
R11/2100	BEDROOM	W16/2100	18.18	1.6	1.6
R1/2101	LD	W1/2101	17.68	0.8	
R1/2101	LD	W2/2101	17.44	0.8	1.6
R2/2101	BEDROOM	W3/2101	27.17	3.1	3.1
R3/2101	BEDROOM	W4/2101	30.91	2.3	
R3/2101	BEDROOM	W5/2101	33.76	2.5	4.8
R4/2101	BEDROOM	W6/2101	33.53	2.4	2.4



DAYLIGHT ANALYSIS

MANOR ROAD, HOMEBASE, RICHMOND
 EXISTING vs PROPOSED SCHEME 08/11/19
 P1685 - rel10

INTERNAL DAYLIGHT

Room	Room Use	Window	VSC(%)	ADF(%)	Total ADF(%)
R5/2101	LD	W7/2101	12.37	1.0	1.0
R6/2101	BEDROOM	W8/2101	26.38	2.1	2.1
R7/2101	BEDROOM	W9/2101	26.86	2.2	2.2
R8/2101	LD	W10/2101	19.81	1.3	1.3
R9/2101	LD	W11/2101	14.99	1.2	1.2
R10/2101	BEDROOM	W12/2101	25.92	2.3	2.3
R11/2101	LD	W13/2101	20.61	1.5	1.5
R12/2101	BEDROOM	W14/2101	27.80	2.3	2.3
R13/2101	LD	W15/2101	22.17	1.5	1.5
R14/2101	BEDROOM	W16/2101	32.69	2.6	2.6
R15/2101	BEDROOM	W17/2101	24.85	2.2	2.2
R16/2101	LKD	W18/2101	23.06	1.0	
R16/2101	LKD	W19/2101	39.59	1.3	
R16/2101	LKD	W20/2101	39.59	1.3	3.6
R17/2101	BEDROOM	W21/2101	16.36	2.1	2.1
R18/2101	KITCHEN	W22/2101	17.07	1.2	1.2
R19/2101	BEDROOM	W23/2101	17.38	2.2	2.2
R20/2101	KITCHEN	W24/2101	17.11	1.2	1.2
R21/2101	BEDROOM	W25/2101	17.38	2.2	2.2
R22/2101	KITCHEN	W26/2101	17.11	1.2	1.2
R23/2101	BEDROOM	W27/2101	17.13	1.1	1.1
R24/2101	BEDROOM	W28/2101	17.23	1.5	1.5
R25/2101	BEDROOM	W29/2101	17.28	1.5	1.5
R26/2101	BEDROOM	W30/2101	13.73	1.0	1.0



DAYLIGHT ANALYSIS
 MANOR ROAD, HOMEBASE, RICHMOND
 EXISTING vs PROPOSED SCHEME 08/11/19
 P1685 - rel10

INTERNAL DAYLIGHT

Room	Room Use	Window	VSC(%)	ADF(%)	Total ADF(%)
R1/2102	LD	W1/2102	19.44	0.9	
R1/2102	LD	W2/2102	19.24	0.9	1.8
R2/2102	BEDROOM	W3/2102	29.09	3.3	3.3
R3/2102	BEDROOM	W4/2102	32.93	2.4	
R3/2102	BEDROOM	W5/2102	36.88	2.6	5.0
R4/2102	BEDROOM	W6/2102	36.79	2.5	2.5
R5/2102	LD	W7/2102	14.14	1.1	1.1
R6/2102	BEDROOM	W8/2102	28.78	2.2	2.2
R7/2102	BEDROOM	W9/2102	29.45	2.3	2.3
R8/2102	LD	W10/2102	21.88	1.4	1.4
R9/2102	LD	W11/2102	16.02	1.3	1.3
R10/2102	BEDROOM	W12/2102	27.78	2.3	2.3
R11/2102	LD	W13/2102	21.75	1.5	1.5
R12/2102	BEDROOM	W14/2102	29.59	2.4	2.4
R13/2102	LD	W15/2102	22.99	1.6	1.6
R14/2102	BEDROOM	W16/2102	33.60	2.6	2.6
R15/2102	BEDROOM	W17/2102	25.40	2.2	2.2
R16/2102	LKD	W18/2102	23.41	1.1	
R16/2102	LKD	W19/2102	39.62	1.3	
R16/2102	LKD	W20/2102	39.62	1.3	3.7
R17/2102	BEDROOM	W21/2102	16.34	2.1	2.1
R18/2102	KITCHEN	W22/2102	17.10	1.2	1.2
R19/2102	BEDROOM	W23/2102	17.26	2.2	2.2
R20/2102	KITCHEN	W24/2102	17.14	1.2	1.2
R21/2102	BEDROOM	W25/2102	17.27	2.2	2.2
R22/2102	KITCHEN	W26/2102	17.14	1.2	1.2



DAYLIGHT ANALYSIS

MANOR ROAD, HOMEBASE, RICHMOND
 EXISTING vs PROPOSED SCHEME 08/11/19
 P1685 - rel10

INTERNAL DAYLIGHT

Room	Room Use	Window	VSC(%)	ADF(%)	Total ADF(%)
R23/2102	BEDROOM	W27/2102	17.17	1.1	1.1
R24/2102	BEDROOM	W28/2102	17.25	1.5	1.5
R25/2102	BEDROOM	W29/2102	17.33	1.5	1.5
R26/2102	BEDROOM	W30/2102	13.73	1.0	1.0
R1/2103	LD	W1/2103	25.34	1.2	
R1/2103	LD	W2/2103	25.19	1.2	2.4
R2/2103	BEDROOM	W3/2103	31.95	3.5	3.5
R3/2103	BEDROOM	W4/2103	34.91	2.5	
R3/2103	BEDROOM	W5/2103	39.17	2.9	5.4
R4/2103	BEDROOM	W6/2103	39.20	2.8	2.8
R5/2103	LD	W7/2103	18.21	1.3	1.3
R6/2103	BEDROOM	W8/2103	31.49	2.4	2.4
R7/2103	BEDROOM	W9/2103	33.15	2.5	2.5
R8/2103	LD	W10/2103	27.72	1.7	1.7
R9/2103	LD	W11/2103	19.67	1.5	1.5
R10/2103	BEDROOM	W12/2103	33.16	2.6	2.6
R11/2103	LD	W13/2103	38.20	2.4	2.4
R12/2103	BEDROOM	W14/2103	39.02	2.9	2.9
R13/2103	LD	W15/2103	39.23	2.4	2.4
R14/2103	BEDROOM	W16/2103	39.33	2.9	2.9
R15/2103	BEDROOM	W17/2103	32.12	2.5	2.5
R16/2103	LKD	W18/2103	38.79	1.6	
R16/2103	LKD	W19/2103	39.60	1.3	
R16/2103	LKD	W20/2103	39.60	1.3	4.2
R17/2103	BEDROOM	W21/2103	20.25	2.5	2.5



DAYLIGHT ANALYSIS

MANOR ROAD, HOMEBASE, RICHMOND
 EXISTING vs PROPOSED SCHEME 08/11/19
 P1685 - rel10

INTERNAL DAYLIGHT

Room	Room Use	Window	VSC(%)	ADF(%)	Total ADF(%)
R18/2103	KITCHEN	W22/2103	21.30	1.4	1.4
R19/2103	BEDROOM	W23/2103	21.49	2.5	2.5
R20/2103	KITCHEN	W24/2103	21.35	1.4	1.4
R21/2103	BEDROOM	W25/2103	21.51	2.5	2.5
R22/2103	KITCHEN	W26/2103	21.36	1.4	1.4
R23/2103	BEDROOM	W27/2103	21.39	1.3	1.3
R24/2103	BEDROOM	W28/2103	21.48	1.7	1.7
R25/2103	BEDROOM	W29/2103	21.57	1.7	1.7
R26/2103	BEDROOM	W30/2103	16.98	1.2	1.2
R1/2104	LD	W1/2104	37.04	1.8	
R1/2104	LD	W2/2104	36.95	1.8	3.6
R2/2104	BEDROOM	W3/2104	36.95	4.4	4.4
R3/2104	BEDROOM	W4/2104	36.88	3.0	
R3/2104	BEDROOM	W5/2104	39.44	3.3	6.3
R4/2104	BEDROOM	W6/2104	39.46	3.2	3.2
R5/2104	LD	W7/2104	29.85	2.1	2.1
R6/2104	BEDROOM	W9/2104	37.52	3.0	3.0
R7/2104	BEDROOM	W10/2104	38.77	3.1	3.1
R8/2104	LD	W11/2104	39.25	2.6	2.6
R9/2104	LD	W14/2104	30.05	2.2	2.2
R10/2104	BEDROOM	W15/2104	38.25	3.3	3.3
R11/2104	BEDROOM	W16/2104	22.53	2.8	2.8
R12/2104	KITCHEN	W17/2104	21.46	1.5	1.5
R13/2104	BEDROOM	W18/2104	21.41	1.4	1.4
R14/2104	BEDROOM	W19/2104	21.67	1.9	1.9



DAYLIGHT ANALYSIS

MANOR ROAD, HOMEBASE, RICHMOND
 EXISTING vs PROPOSED SCHEME 08/11/19
 P1685 - rel10

INTERNAL DAYLIGHT

Room	Room Use	Window	VSC(%)	ADF(%)	Total ADF(%)
------	----------	--------	--------	--------	--------------

R15/2104	BEDROOM	W20/2104	21.54	1.9	1.9
R16/2104	BEDROOM	W21/2104	16.99	1.3	1.3

Proposed Scheme Dated 08/11/19 - Block A

R1/3000	BEDROOM	W1/3000	18.26	2.1	2.1
R2/3000	BEDROOM	W2/3000	33.50	2.9	2.9
R3/3000	BEDROOM	W3/3000	32.76	3.0	3.0
R4/3000	BEDROOM	W4/3000	31.76	3.2	3.2
R5/3000	BEDROOM	W5/3000	31.81	4.3	4.3
R6/3000	LKD	W6/3000	16.34	1.0	
R6/3000	LKD	W7/3000	16.25	1.0	2.0
R7/3000	BEDROOM	W8/3000	11.85	2.0	2.0
R8/3000	BEDROOM	W9/3000	11.64	1.1	1.1
R9/3000	LD	W10/3000	9.15	0.7	0.7
R10/3000	LD	W11/3000	7.81	0.7	
R10/3000	LD	W12/3000	8.30	0.4	1.1

Proposed Scheme Dated 08/11/19 - Block C

R1/4000	BEDROOM	W1/4000	36.69	2.8	2.8
R2/4000	BEDROOM	W2/4000	36.70	1.6	
R2/4000	BEDROOM	W3/4000	34.37	2.7	4.3
R3/4000	BEDROOM	W4/4000	32.87	2.7	2.7
R4/4000	LD	W5/4000	28.18	1.1	
R4/4000	LD	W6/4000	25.36	2.0	3.1
R5/4000	LD	W7/4000	28.84	1.8	
R5/4000	LD	W8/4000	29.21	0.9	
R5/4000	LD	W9/4000	32.73	1.0	3.7
R6/4000	BEDROOM	W10/4000	34.76	1.9	
R6/4000	BEDROOM	W11/4000	24.98	0.9	



DAYLIGHT ANALYSIS

MANOR ROAD, HOMEBASE, RICHMOND
EXISTING vs PROPOSED SCHEME 08/11/19
P1685 - rel10

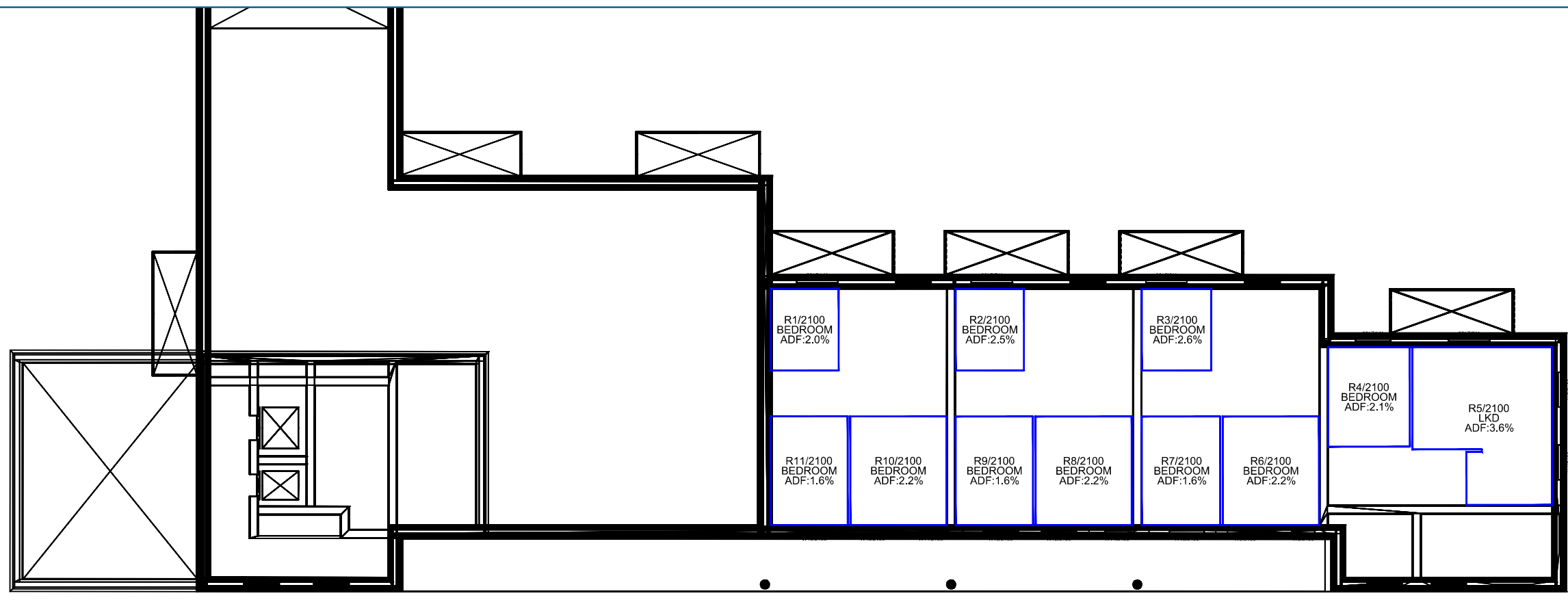
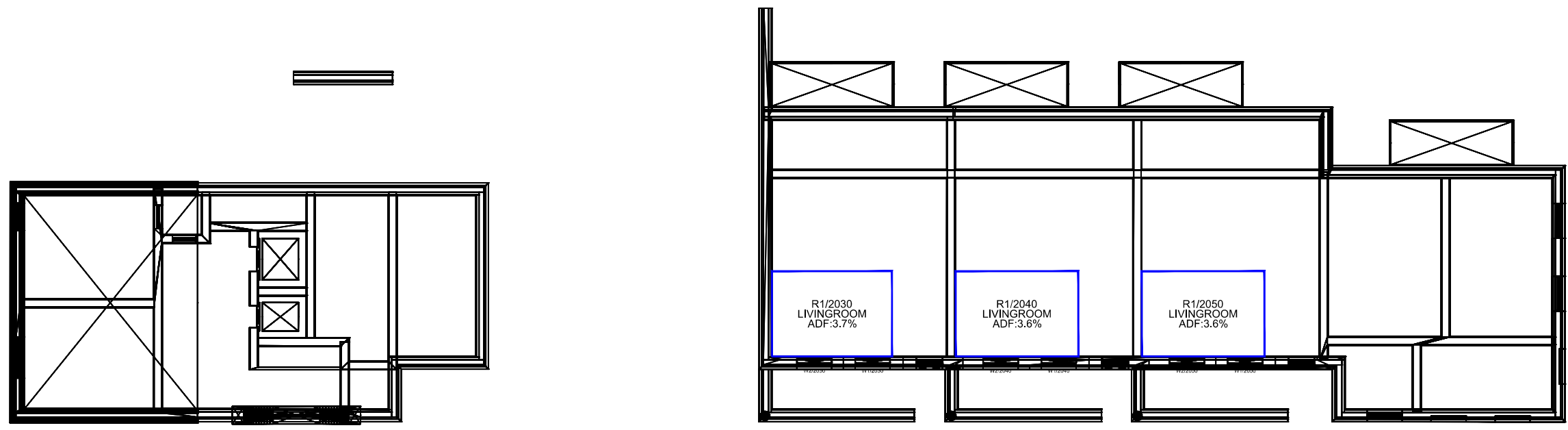
INTERNAL DAYLIGHT

Room	Room Use	Window	VSC(%)	ADF(%)	Total ADF(%)
------	----------	--------	--------	--------	--------------

R6/4000	BEDROOM	W12/4000	22.70	1.5	4.3
---------	---------	----------	-------	-----	-----

Proposed Scheme Dated 08/11/19 - Block D

R1/5000	LD	W1/5000	15.38	1.1	1.1
R2/5000	BEDROOM	W2/5000	13.66	2.0	
R2/5000	BEDROOM	W3/5000	14.12	0.7	2.7
R3/5000	LD	W4/5000	9.36	1.2	
R3/5000	LD	W5/5000	7.91	0.5	1.7
R4/5000	BEDROOM	W6/5000	6.80	0.5	0.5



Ground Floor

Mezzanine Floor

Sources: Point 2 Surveyors
 Survey Info
 Point Cloud Data
 Assael Architecture Limited
 3D Models (received 31/10/19)
 A3004 2-7-1 ENVELOPE AND PARTY-A1, A2 & A3.dwg
 A3004 2-7-1 ENVELOPE AND PARTY-B.dwg
 A3004 2-7-1 ENVELOPE AND PARTY-C1&C2.dwg
 A3004 2-7-1 ENVELOPE AND PARTY-D1 & D2.dwg
 A3004 2-7-1 ENVELOPE AND PARTY-E.dwg
 3D Model + 2D Drawings (received 08/11/19)
 A3004 2-7-1 ENVELOPE AND PARTY-E.dwg
 MNR-AA-BLE-ZZ-DR-A-(4500_4503)-R3.dwg
 MNR-AA-BE1-(GF_05)-DR-A-2601-R6 .dwg

Key:

Project: Homebase
 Richmond

Title: Internal ADF Results
 Proposed Scheme Received 08/11/19
 Block E

Scheme Confirmed: --

Date: --

Drawn By: JR

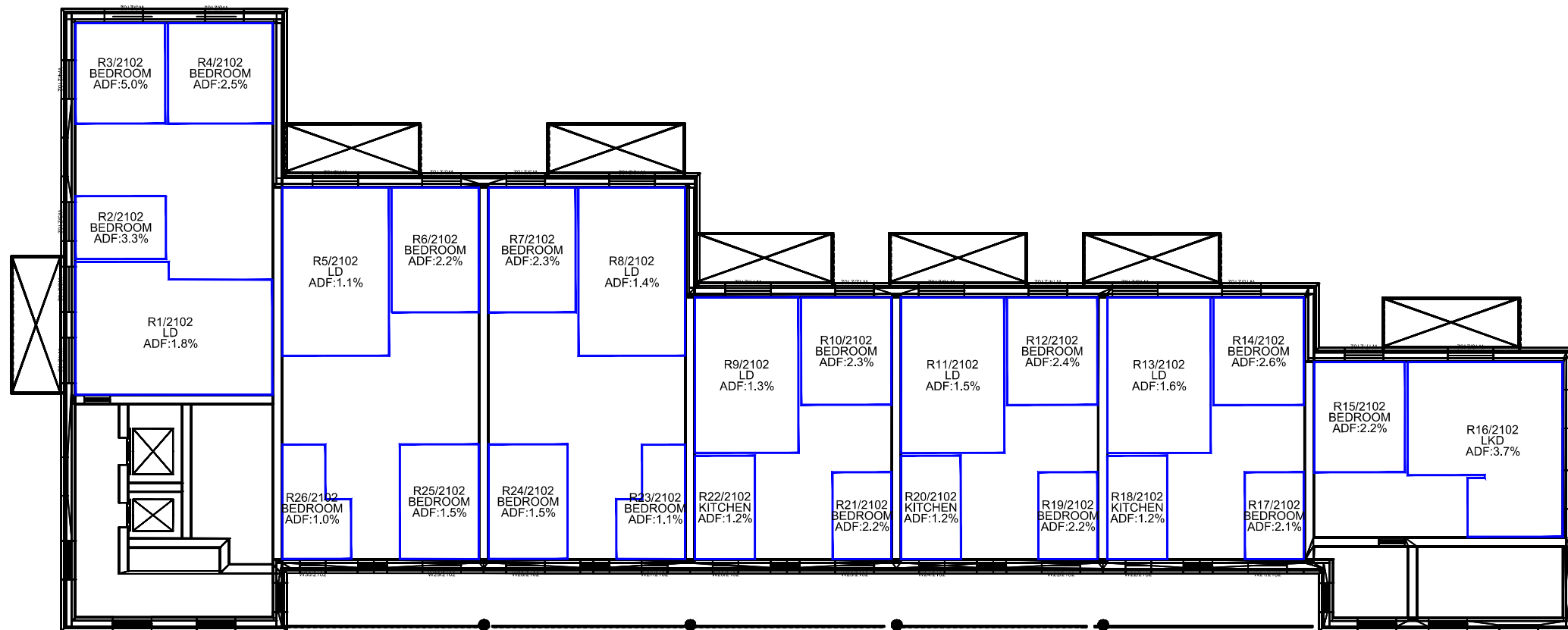
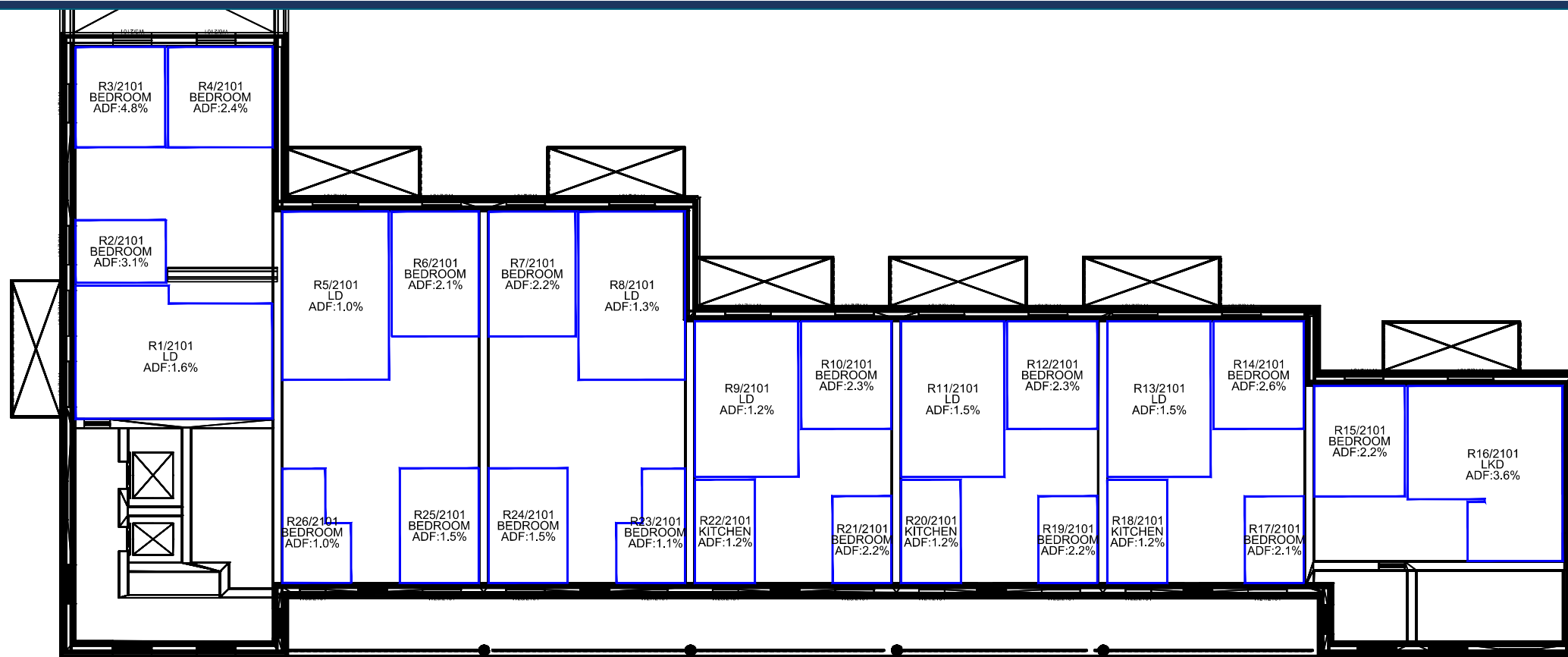
Scale: 1:200 @ A3

Date: Nov 19

Dwg No: P1685/INT/01

Rel: 10





First Floor

Second Floor

Sources: Point 2 Surveyors
 Survey Info
 Point Cloud Data
 Assael Architecture Limited
 3D Models (received 31/10/19)
 A3004 2-7-1 ENVELOPE AND PARTY-A1, A2 & A3.dwg
 A3004 2-7-1 ENVELOPE AND PARTY-B.dwg
 A3004 2-7-1 ENVELOPE AND PARTY-C1&C2.dwg
 A3004 2-7-1 ENVELOPE AND PARTY-D1 & D2.dwg
 A3004 2-7-1 ENVELOPE AND PARTY-E.dwg
 3D Model + 2D Drawings (received 08/11/19)
 A3004 2-7-1 ENVELOPE AND PARTY-E.dwg
 MNR-AA-BLE-ZZ-DR-A-(4500_4503)-R3.dwg
 MNR-AA-BE1-(GF_05)-DR-A-2601-R6 .dwg

Key:

Project: Homebase
 Richmond

Title: Internal ADF Results
 Proposed Scheme Received 08/11/19
 Block E

Scheme Confirmed: --

Date: --

Drawn By: JR

Scale: 1:200 @ A3

Date: Nov 19

Dwg No: P1685/INT/02

Rel: 10

