

Sources: Point 2 Surveyors
 Survey Info
 Point Cloud Data
 Assael Architecture Limited
 3D Models (received 31/10/19)
 A3004 2-7-1 ENVELOPE AND PARTY-A1, A2 & A3.dwg
 A3004 2-7-1 ENVELOPE AND PARTY-B.dwg
 A3004 2-7-1 ENVELOPE AND PARTY-C1&C2.dwg
 A3004 2-7-1 ENVELOPE AND PARTY-D1 & D2.dwg
 A3004 2-7-1 ENVELOPE AND PARTY-E.dwg
 3D Model + 2D Drawings (received 08/11/19)
 A3004 2-7-1 ENVELOPE AND PARTY-E.dwg
 MNR-AA-BLE-ZZ-DR-A-(4500_4503)-R3.dwg
 MNR-AA-BE1-(GF_05)-DR-A-2601-R6 .dwg

Key:

Project: Homebase
 Richmond

Title: Internal ADF Results
 Proposed Scheme Received 08/11/19
 Block E

Scheme Confirmed: --

Date: --

Drawn By: JR

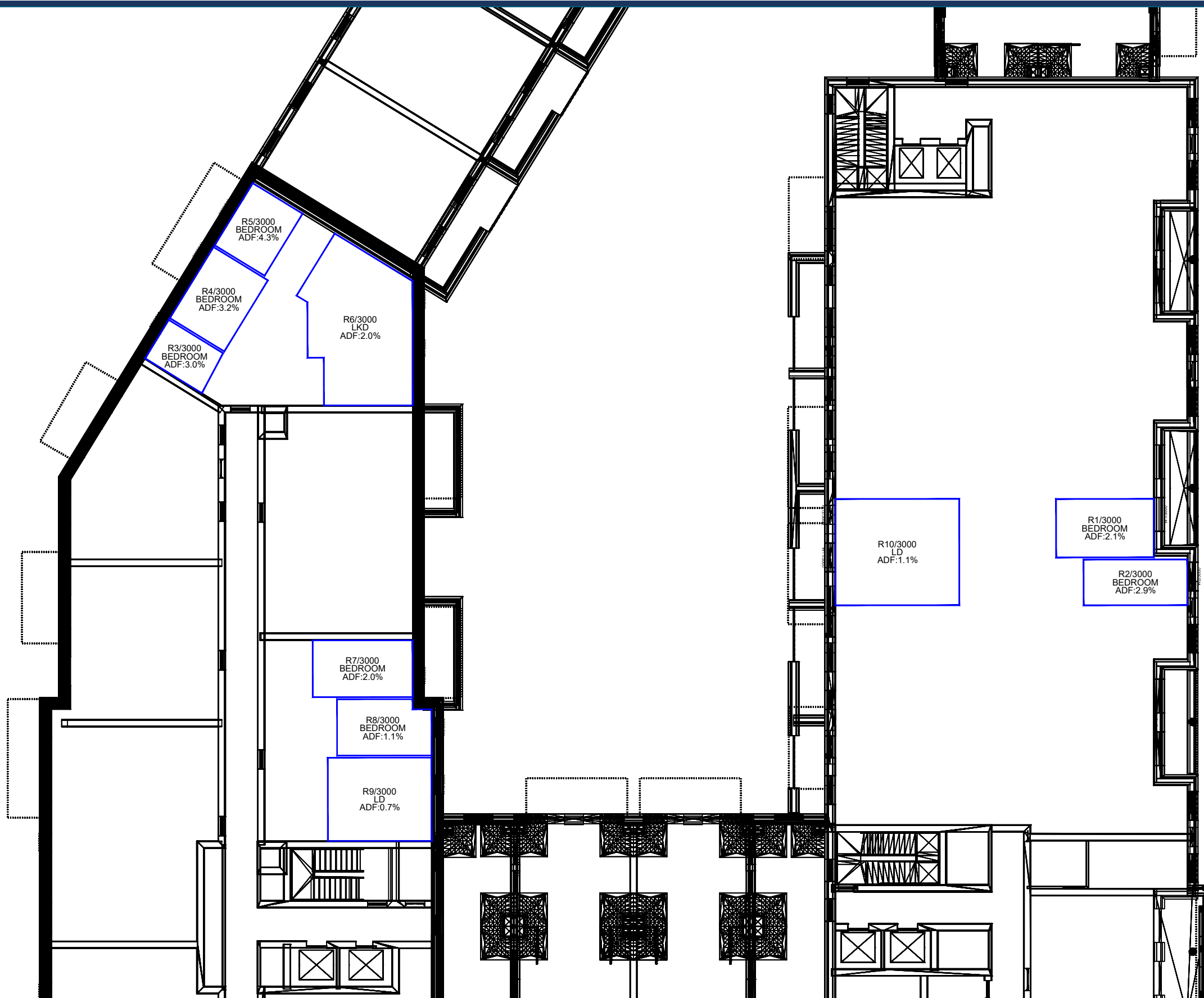
Scale: 1:200 @ A3

Date: Nov 19

Dwg No: P1685/INT/03

Rel: 10





Ground Floor

Sources: Point 2 Surveyors
 Survey Info
 Point Cloud Data
 Assael Architecture Limited
 3D Models (received 31/10/19)
 A3004 2-7-1 ENVELOPE AND PARTY-A1, A2 & A3.dwg
 A3004 2-7-1 ENVELOPE AND PARTY-B.dwg
 A3004 2-7-1 ENVELOPE AND PARTY-C1&C2.dwg
 A3004 2-7-1 ENVELOPE AND PARTY-D1 & D2.dwg
 A3004 2-7-1 ENVELOPE AND PARTY-E.dwg
 3D Model + 2D Drawings (received 08/11/19)
 A3004 2-7-1 ENVELOPE AND PARTY-E.dwg
 MNR-AA-BLE-ZZ-DR-A-(4500_4503)-R3.dwg
 MNR-AA-BE1-(GF_05)-DR-A-2601-R6 .dwg

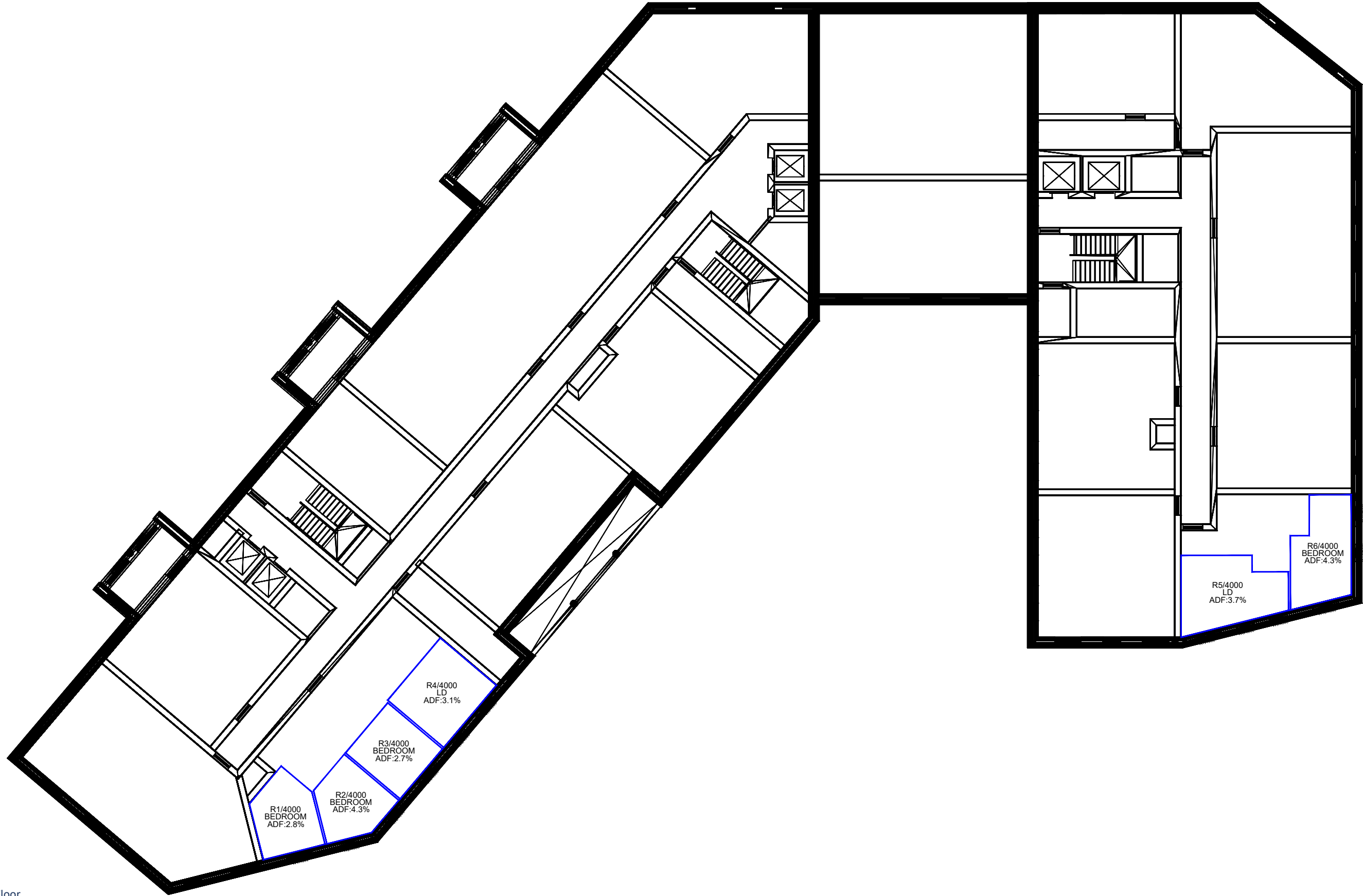
Key:

Project: Homebase
 Richmond

Title: Internal ADF Results
 Proposed Scheme Received 08/11/19
 Block A

Scheme Confirmed:	Date:	Drawn By:	Scale:	Date:	Dwg No:	Rel:
--	--	JR	1:200 @ A3	Nov 19	P1685/INT/04	10






Ground Floor

Sources: Point 2 Surveyors
 Survey Info
 Point Cloud Data
 Assael Architecture Limited
 3D Models (received 31/10/19)
 A3004 2-7-1 ENVELOPE AND PARTY-A1, A2 & A3.dwg
 A3004 2-7-1 ENVELOPE AND PARTY-B.dwg
 A3004 2-7-1 ENVELOPE AND PARTY-C1&C2.dwg
 A3004 2-7-1 ENVELOPE AND PARTY-D1 & D2.dwg
 A3004 2-7-1 ENVELOPE AND PARTY-E.dwg
 3D Model + 2D Drawings (received 08/11/19)
 A3004 2-7-1 ENVELOPE AND PARTY-E.dwg
 MNR-AA-BLE-ZZ-DR-A-(4500_4503)-R3.dwg
 MNR-AA-BE1-(GF_05)-DR-A-2601-R6 .dwg

Key:



Scheme Confirmed: --	Date: --
----------------------	----------

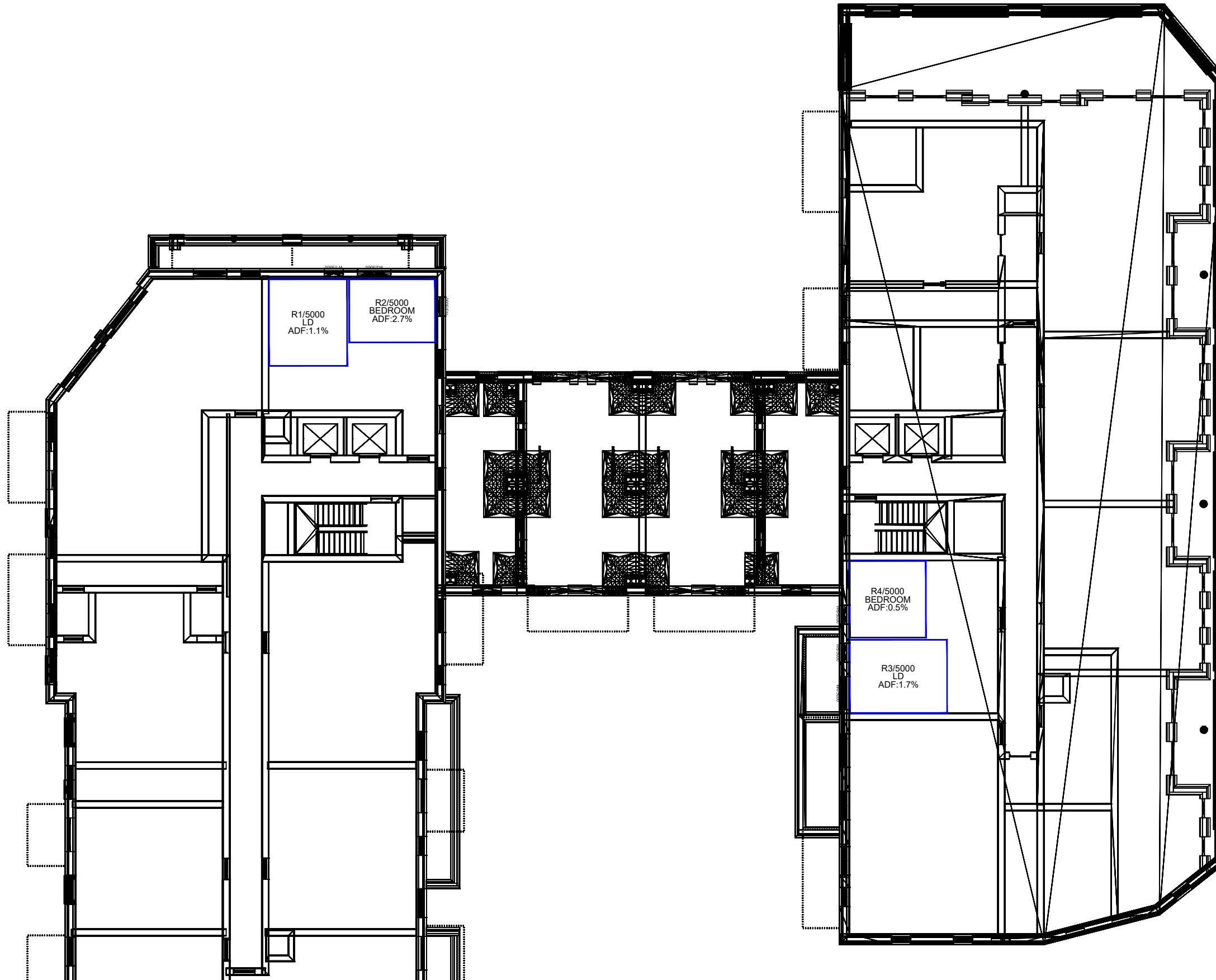
Project: Homebase Richmond

Drawn By: JR	Scale: 1:200 @ A3
Date: Nov 19	

Title: Internal ADF Results
 Proposed Scheme Received 08/11/19
 Block C

Dwg No: P1685/INT/05	Rel: 10
----------------------	---------






Ground Floor

Sources: Point 2 Surveyors
 Survey Info
 Point Cloud Data
 Assael Architecture Limited
 3D Models (received 31/10/19)
 A3004 2-7-1 ENVELOPE AND PARTY-A1, A2 & A3.dwg
 A3004 2-7-1 ENVELOPE AND PARTY-B.dwg
 A3004 2-7-1 ENVELOPE AND PARTY-C1&C2.dwg
 A3004 2-7-1 ENVELOPE AND PARTY-D1 & D2.dwg
 A3004 2-7-1 ENVELOPE AND PARTY-E.dwg
 3D Model + 2D Drawings (received 08/11/19)
 A3004 2-7-1 ENVELOPE AND PARTY-E.dwg
 MNR-AA-BLE-ZZ-DR-A-(4500_4503)-R3.dwg
 MNR-AA-BE1-(GF_05)-DR-A-2601-R6 .dwg

Key:



Scheme Confirmed: --

Date: --

Project: Homebase
 Richmond

Drawn By: JR

Scale: 1:200 @ A3

Date: Nov 19

Title: Internal ADF Results
 Proposed Scheme Received 08/11/19
 Block C

Dwg No: P1685/INT/06

Rel: 10





INTERNAL SUNLIGHT INTERNAL ANALYSIS

MANOR ROAD, HOMEBASE, RICHMOND
 EXISTING vs PROPOSED SCHEME 08/11/19
 P1685 - rel10

INTERNAL APSH

Room	Window	Room Use	Window		Room	
			Winter APSH	Annual APSH	Winter APSH	Annual APSH

Proposed Scheme Dated 08/11/19 - Block E

R1/2030	W1/2030	LIVINGROOM	9	39		
R1/2030	W2/2030	LIVINGROOM	8	36	9	39
R1/2040	W1/2040	LIVINGROOM	9	38		
R1/2040	W2/2040	LIVINGROOM	8	36	9	38
R1/2050	W1/2050	LIVINGROOM	9	38		
R1/2050	W2/2050	LIVINGROOM	8	36	9	38
R5/2100	W5/2100	LKD	0	12		
R5/2100	W6/2100	LKD	0	1		
R5/2100	W7/2100	LKD	0	1	0	13
R1/2101	W1/2101	LD	15	18		
R1/2101	W2/2101	LD	15	23	17	27
R5/2101	W7/2101	LD	0	5	0	5
R8/2101	W10/2101	LD	2	11	2	11
R9/2101	W11/2101	LD	0	7	0	7
R11/2101	W13/2101	LD	2	15	2	15
R13/2101	W15/2101	LD	3	16	3	16
R16/2101	W18/2101	LKD	3	15		
R16/2101	W19/2101	LKD	0	1		
R16/2101	W20/2101	LKD	0	1	3	16
R1/2102	W1/2102	LD	18	21		
R1/2102	W2/2102	LD	17	25	20	30
R5/2102	W7/2102	LD	0	7	0	7
R8/2102	W10/2102	LD	3	15	3	15



INTERNAL SUNLIGHT INTERNAL ANALYSIS

MANOR ROAD, HOMEBASE, RICHMOND
EXISTING vs PROPOSED SCHEME 08/11/19

P1685 - rel10

INTERNAL APSH

Room	Window	Room Use	Window		Room	
			Winter APSH	Annual APSH	Winter APSH	Annual APSH
R9/2102	W11/2102	LD	0	8	0	8
R11/2102	W13/2102	LD	4	17	4	17
R13/2102	W15/2102	LD	4	17	4	17
R16/2102	W18/2102	LKD	3	15		
R16/2102	W19/2102	LKD	0	1		
R16/2102	W20/2102	LKD	0	1	3	16
R1/2103	W1/2103	LD	21	31		
R1/2103	W2/2103	LD	22	35	22	38
R5/2103	W7/2103	LD	0	7	0	7
R8/2103	W10/2103	LD	4	18	4	18
R9/2103	W11/2103	LD	0	8	0	8
R11/2103	W13/2103	LD	4	24	4	24
R13/2103	W15/2103	LD	4	24	4	24
R16/2103	W18/2103	LKD	4	24		
R16/2103	W19/2103	LKD	0	1		
R16/2103	W20/2103	LKD	0	1	4	25
R1/2104	W1/2104	LD	24	58		
R1/2104	W2/2104	LD	24	58	24	58
R5/2104	W7/2104	LD	0	9	0	9
R8/2104	W11/2104	LD	4	24	4	24
R9/2104	W14/2104	LD	0	9	0	9

Proposed Scheme Dated 08/11/19 - Block A

R6/3000	W6/3000	LKD	0	14		
R6/3000	W7/3000	LKD	0	14	0	14
R9/3000	W10/3000	LD	0	0	0	0
R10/3000	W11/3000	LD	0	2		
R10/3000	W12/3000	LD	0	0	0	2



INTERNAL SUNLIGHT INTERNAL ANALYSIS

MANOR ROAD, HOMEBASE, RICHMOND
 EXISTING vs PROPOSED SCHEME 08/11/19
 P1685 - rel10

INTERNAL APSH

Room	Window	Room Use	Window		Room	
			Winter APSH	Annual APSH	Winter APSH	Annual APSH

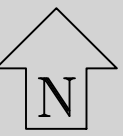
Proposed Scheme Dated 08/11/19 - Block C

R4/4000	W5/4000	LD	13	39		
R4/4000	W6/4000	LD	16	39	16	42
R5/4000	W7/4000	LD	24	41		
R5/4000	W8/4000	LD	20	32		
R5/4000	W9/4000	LD	20	41	24	54

Proposed Scheme Dated 08/11/19 - Block D

R1/5000	W1/5000	LD	0	0	0	0
R3/5000	W4/5000	LD	3	9		
R3/5000	W5/5000	LD	0	0	3	9

Appendix 6: Sun Hours on Ground



Sources: Point 2 Surveyors
 Survey Info
 Point Cloud Data
 Assael Architecture Limited
 3D Models (received 31/10/19)
 A3004 2-7-1 ENVELOPE AND PARTY-A1_A2 & A3.dwg
 A3004 2-7-1 ENVELOPE AND PARTY-B.dwg
 A3004 2-7-1 ENVELOPE AND PARTY-C1&C2.dwg
 A3004 2-7-1 ENVELOPE AND PARTY-D1 & D2.dwg
 A3004 2-7-1 ENVELOPE AND PARTY-E.dwg
 3D Model + 2D Drawings (received 08/11/19)
 A3004 2-7-1 ENVELOPE AND PARTY-E.dwg
 MNR-AA-BLE-ZZ-DR-A-(4500_4503)-R3.dwg
 MNR-AA-BE1-(GF_05)-DR-A-2601-R6 .dwg

Key:	Area analysed
	Area with more than 2 hours of direct sunlight
	Area with less than 2 hours of direct sunlight
	50% Percentage of area with more than 2 hours of direct sunlight
Scheme Confirmed:	--
Date:	--

Project:	Homebase Richmond
Drawn By:	JR
Scale:	1:1500 @ A3
Date:	Nov 19

Title:	BRE 2 Hour Sun on Ground Analysis Proposed Scheme Dated 08/11/19 Surrounding Amenity Spaces March 21st
Dwg No:	P1685/SHA/06
Rel:	10

