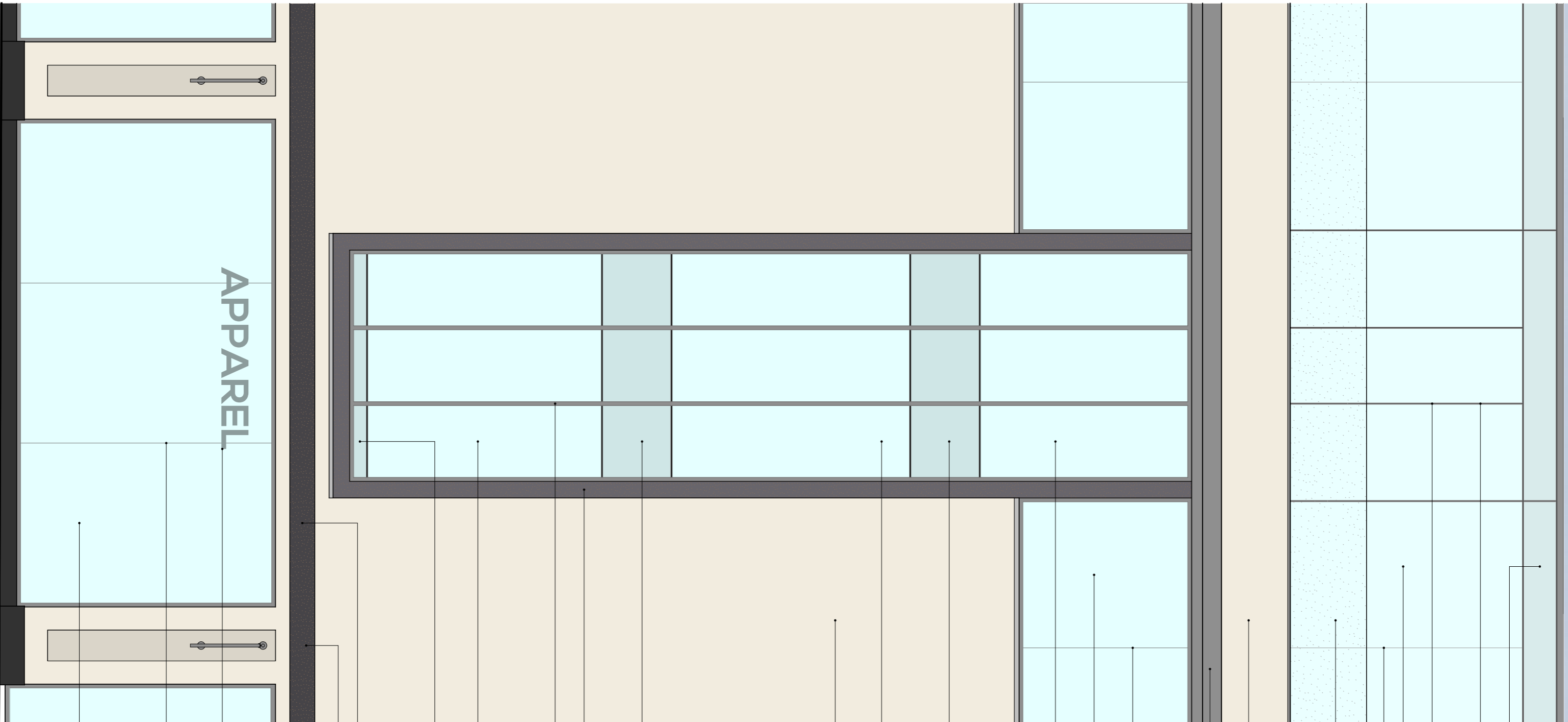


APPAREL



Top of Roof
+29.670

Back painted glass

Perfomer frame with black silicone capping to intermediate curtain wall sections
Colour: Dark Grey

Vertical joints to be centred on glazing frame below

Clear glazing

Silicone joint

Perforated metal balustrade

Offices(s)
Fourth Floor
+25.870

Portland stone

Aluminium capping to canopy to match glazing frame

Silicone joint

Clear glazing

Clear glazing

Offices(s)
Third Floor
+22.140

Back painted glass

Clear glazing

Portland stone

Offices(s)
Second Floor
+18.150

Back painted glass

Black textured glass mosaic tiles

Curtain wall perforer frame and mullions with black silicone capping to horizontal intermediate curtain wall sections
Colour: Dark Grey

Clear glazing

Back painted glass

Offices(s)
First Floor
+14.210

Black textured glass mosaic tiles
900x900mm projecting acrylic signage blade with stainless steel bracket and integrated internal LED illumination

Top of Shopfront
+13.000

Tenant signage behind glass

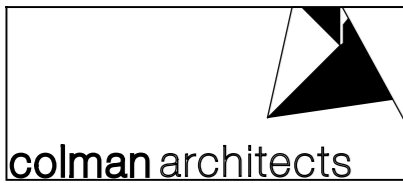
Silicone joint

Clear glazing

Retail Unit(s)
Ground Floor
+9.500

0 1 2m

PLANNING ISSUE



Project
75-81 George Street
Richmond, TW9 1HA

Title
Proposed Typical Bay Elevation

| | |
|-----------------------------|--|
| Scale 1:50 @ A3 | Date 01/02/2019 |
| Drawn by DLA | Checked by Proj. Arch. Checked By Manager |
| Drawing No. 1720/P(21)02 | Revision P2 |

The Colman Partnership Limited
27 Harcourt Street
London
W1H 4HP
Telephone: 020 7535 2040
Facsimile : 020 7535 2041
email: projects@colmanarchitects.co.uk
www.colmanarchitects.co.uk

CAD Filename: \$FILES
SDATES

Dimensions are not to be scaled from this drawing.
This drawing is based on current available information and should not be relied on as accurate measurements of usable space.
This drawing is the property of the Colman Partnership Ltd. and Copyright is reserved by them. The drawing is issued on condition that it is not copied or disclosed by or to any unauthorised persons without the prior consent in writing of the Colman Partnership Ltd.

| Rev | Notes | By | Date |
|-----|---------------------------------|-----|----------|
| P1 | Planning Issue | DLA | 05/07/19 |
| P2 | Consultation responses included | JB | 06/01/20 |