

O'NEILL'S RICHMOND

(Formerly The Railway Tavern)
28/29 The Quadrant
Richmond
TW9 1DN

Client: M&B
Date: 10.02.20
Drawn by: J.J
Revision: 1



MORGAN SIGNS AND DESIGN

Unit A4
Walsall Enterprise Park
Regal Drive
Walsall
WS2 9HQ
T: 01922 635 726
F: 01922 659 940

FOLLOW US 



MORGAN
Signs & Design



PROPOSED FRONT ELEVATION



PAINT
REFS:



Dulux
00NN/20/000



Black

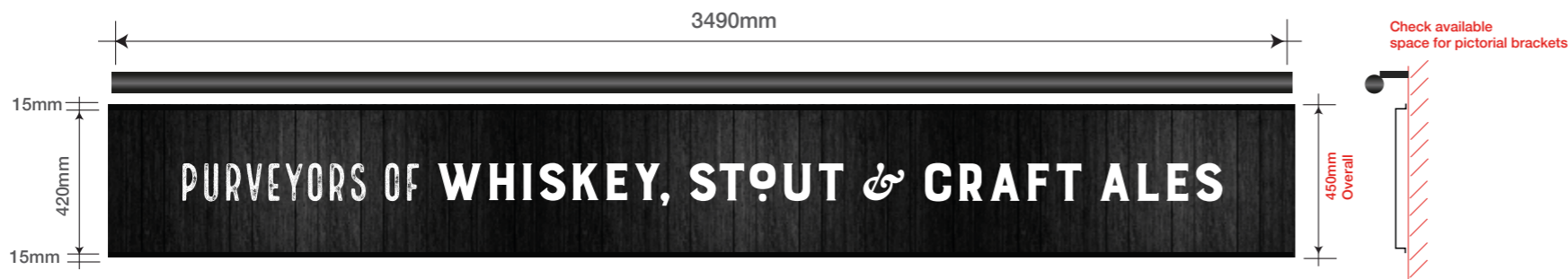


PROPOSED SIGNAGE



Item 1

New fabricated aluminium fascia sign. Sign to be wrapped with timber effect digital print. O'Neill's lettering to be built up fabricated letters with 60mm return edges, coated white with with rimplless opal faces. Letters to have face & halo illumination using white led's. Secondary text to be applied matt white vinyl and to be illuminated with ecolux mini led trough lights with warm white LED'd and an opal diffuser.. Fascias to have 15mm up and downstand to allow fixing into recessed area.
 Overall finished size inclusive of up/down stands: 12645mm x 440mm x 30mm
 SCALE: 1:40 @ A3
 Max letter height: 400mm



Item 2

New fabricated aluminium fascia sign. Sign to be wrapped with timber effect digital print. Text to be applied matt white vinyl. Fascia to have 15mm up and downstand to allow fixing into recessed area. Illuminated with ecolux mini led trough light with warm white LED'd and an opal diffuser..
 Overall finished size inclusive of up/down stands: 3490mm x 450mm x 30mm
 SCALE: 1:20 @ A3
 Max letter height: 120mm



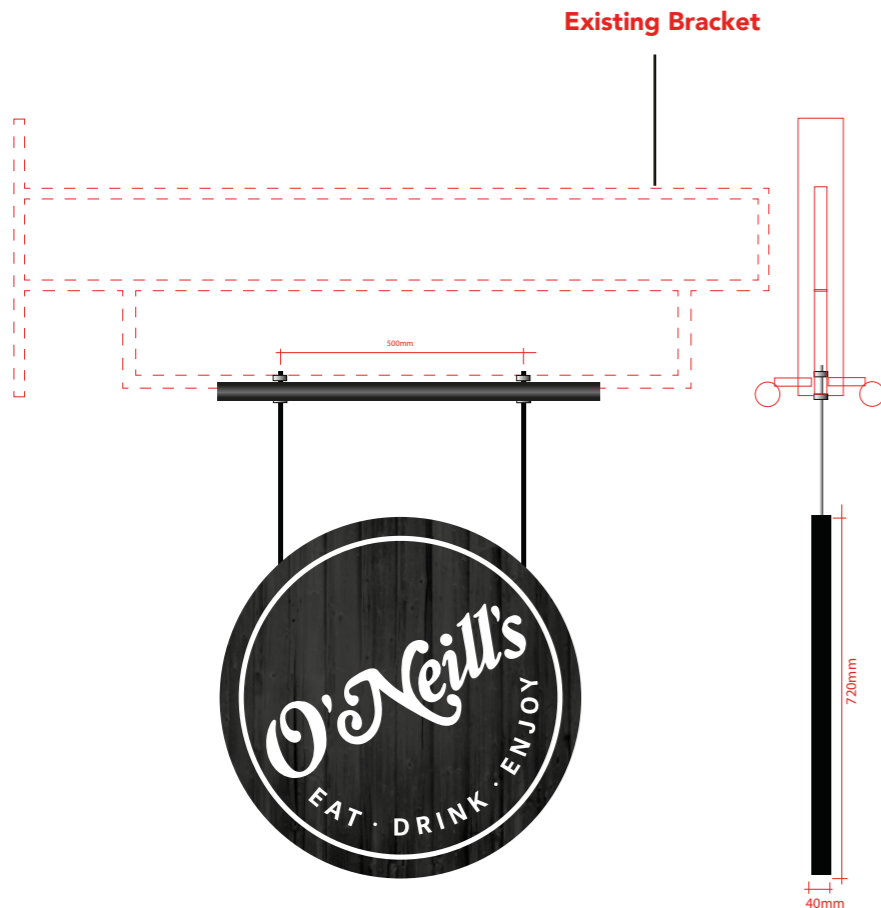
Item 3

New fabricated aluminium fascia sign. Sign to be wrapped with timber effect digital print. O'Neill's lettering to be built up fabricated letters with 60mm return edges, coated white with with rimplless opal faces. Letters to have face & halo illumination using white led's. Fascia to have 15mm up and downstand to allow fixing into recessed area.
 Overall finished size inclusive of up/down stands: 3290mm x 520mm x 30mm
 SCALE: 1:20 @ A3
 Max letter height: 400mm

PAINT REFS:  Black



PROPOSED SIGNAGE



Item 4. QTY 2 off

Double sided hanging signs to fit to the existing projecting brackets.
 Hanging sign to be 720mm diameter with 40mm return edge, fabricated in aluminium & coated black c/w applie digital prints to both sides.
 10mm allthread rods c/w with washers and nylocs to suspend from the existing projecting brackets.
 Size: 720mm x 720mm
 Scale: 1:15

Max letter height: 182mm

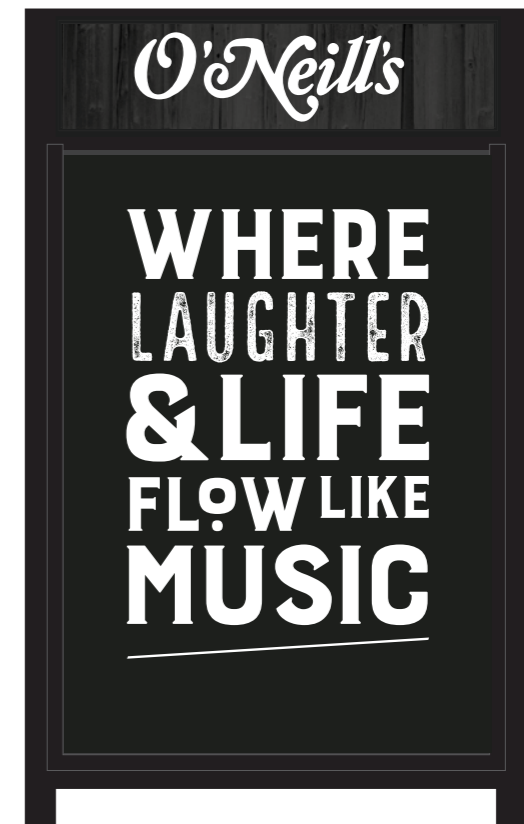


ITEM 5. (1 off)

Fabricated ray sign coated black with applied digital print
 Wording TBC

Size: 400mm x 1000mm x 20mm
 Scale: 1:15

Max letter height: 12mm



ITEM 6. (1 off)

Double sided 'A' Board sign, complete with A1 5mm foamex corex slat holder and pre printed back panel.

PAINT REFS:



Black



PROPOSED REAR ELEVATION



PAINT
REFS:



Black



ITEM 7. (1 off)

Signwritten to arch above gates
Wording TBC

Size: 820mm wide sign writing.
Scale: 1:10
Max letter height: 179mm



ITEM 8. (1 off)

Signwritten

Size: 1950mm wide sign writing.
Scale: 1:10
Max letter height: 200mm

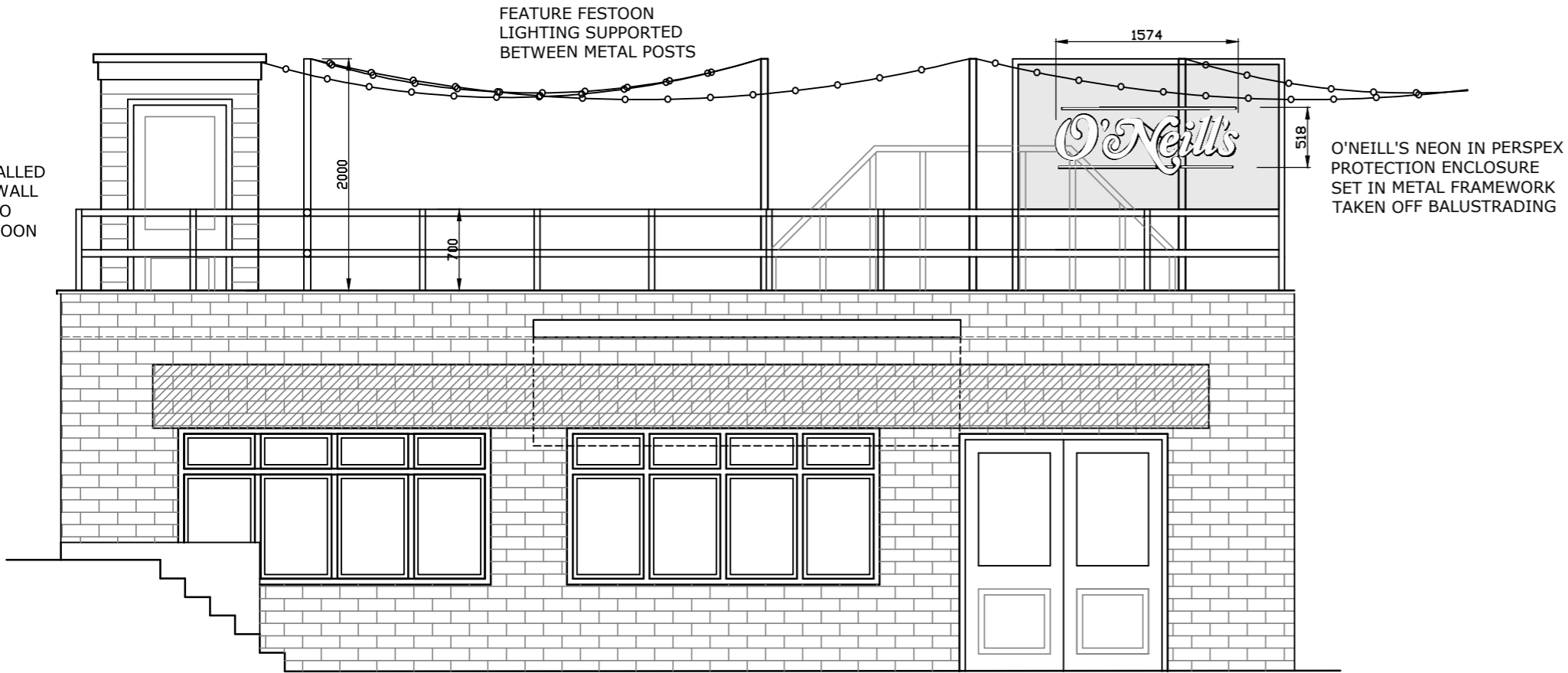
PAINT
REFS:



Black



PROPOSED SIGNAGE



ITEM 9. (1 off)
 O'Neill's neon in a clear acrylic case with black vinyl on the back of the case.
 -Exact size to be checked when metal framework is installed.

Scale: 1:20
 Max letter height: 508mm

PROPOSED ELEVATION C-C

**PAINT
 REFS:**



EXISTING SITE



PAINT
REFS: