

Date:
16/01/2020



COLLINGWOOD
LIGHTING


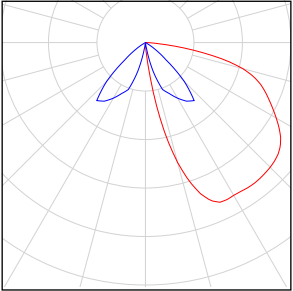
Vertical bollard plot

Content

Vertical bollard plot

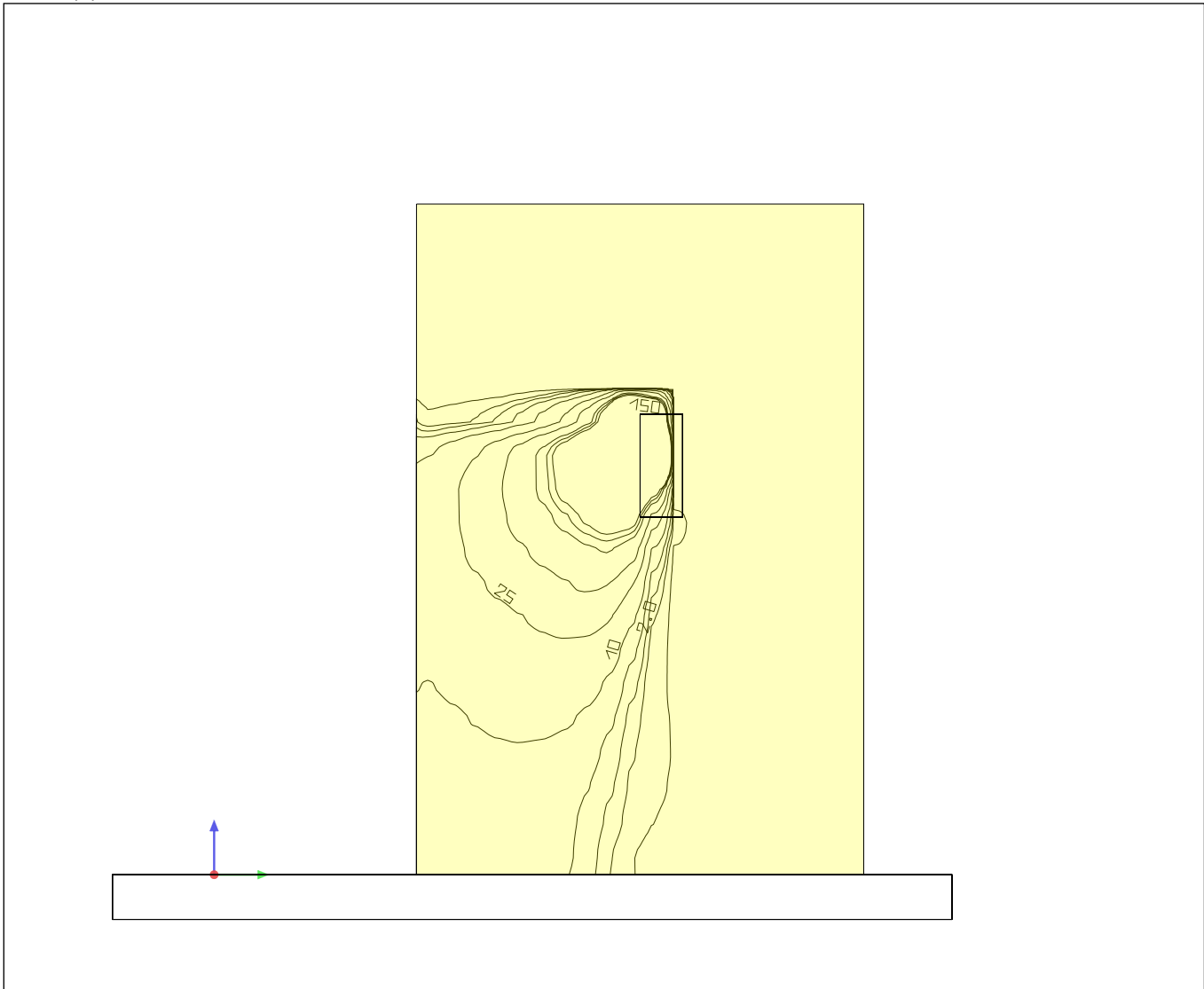
Luminaire list.....	3
Site 1	
Views.....	4
Calculation surfaces.....	7
Calculation surface 1 / Perpendicular illuminance.....	8

Vertical bollard plot

Quantity	Luminaire (Luminous emittance)		
1	COLLINGWOOD - BOL LED 030 MAINS WW BOL LED MAINS 030 3000K Luminous emittance 1 Fitting: 1xBOL LED MAINS Absolute photometry Luminaire luminous flux: 162 lm Power: 5.0 W Luminous efficacy: 32.4 lm/W		

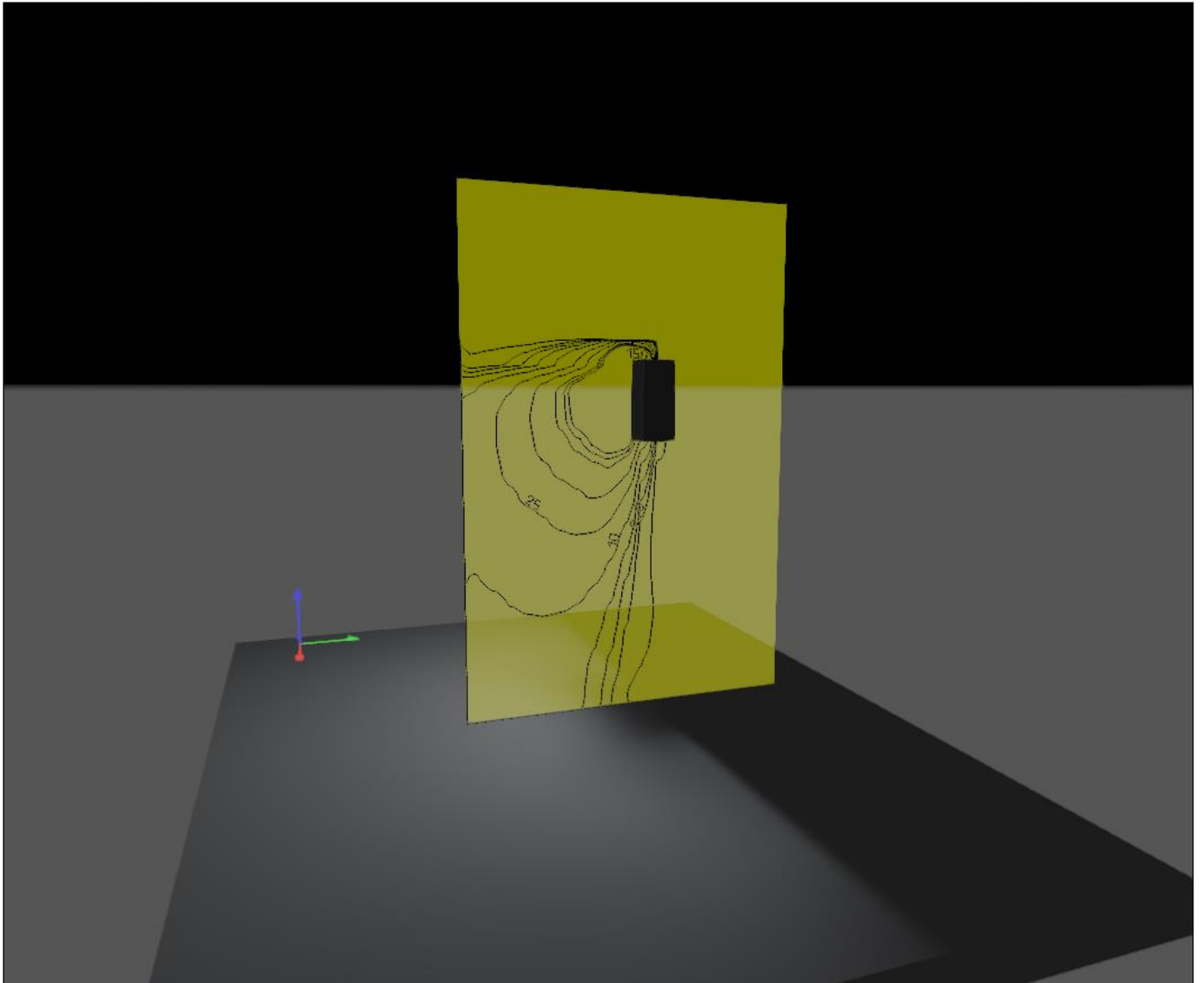
Site 1

Site 1 (2)

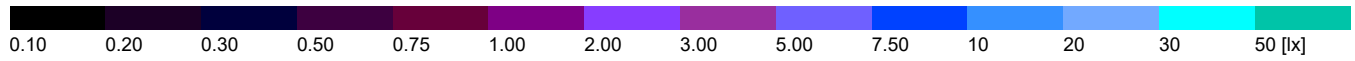
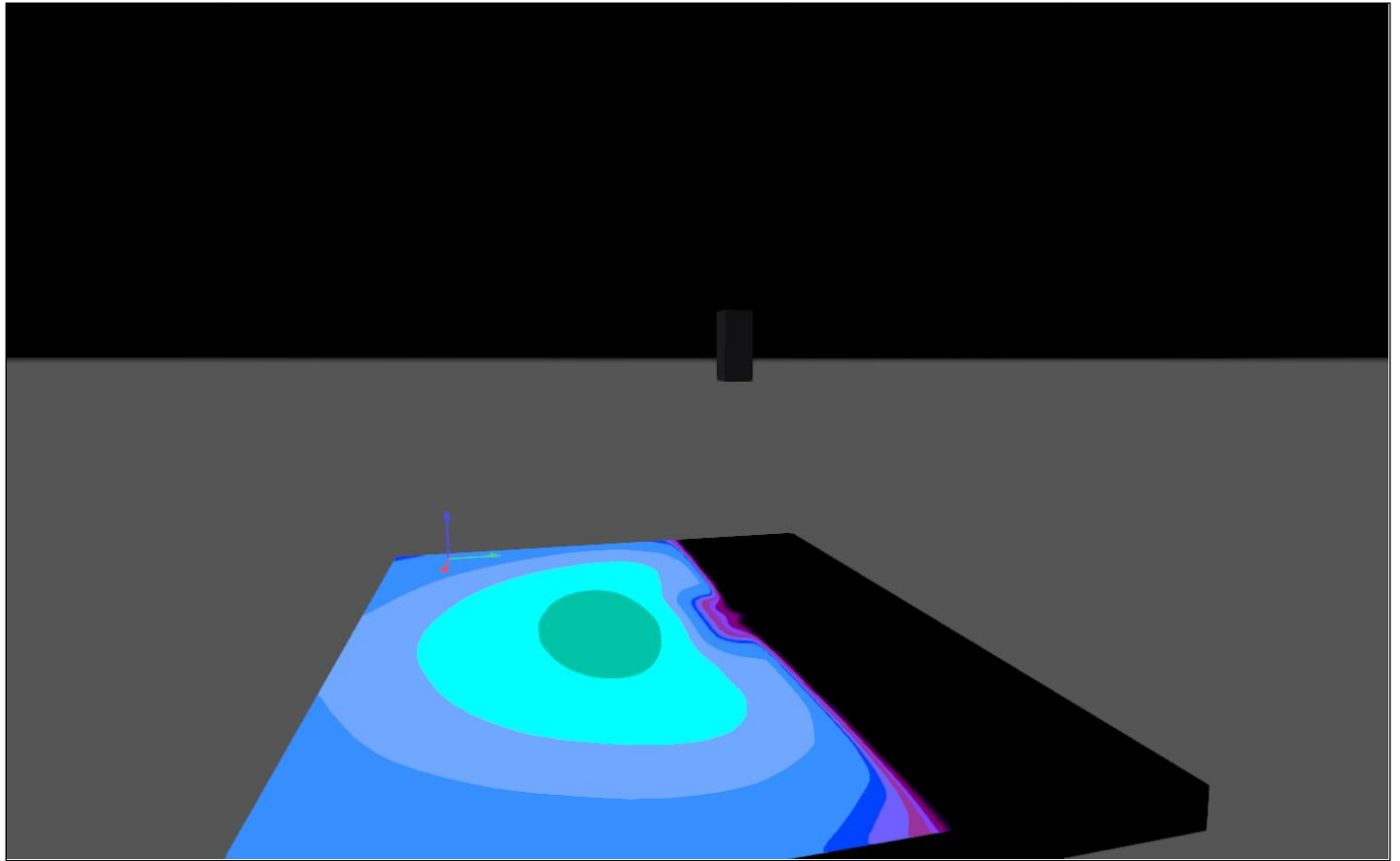


Scale: 1 : 15

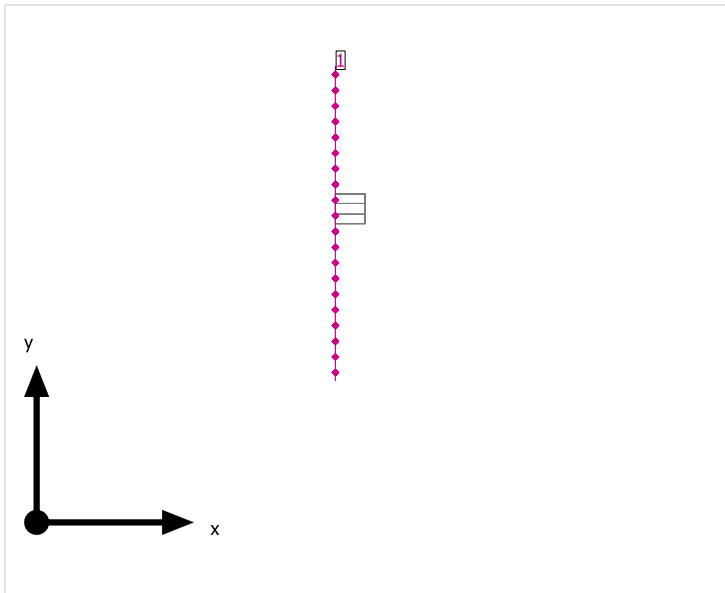
Site 1 (3)



Site 1 (4), Illuminance values in [lx]

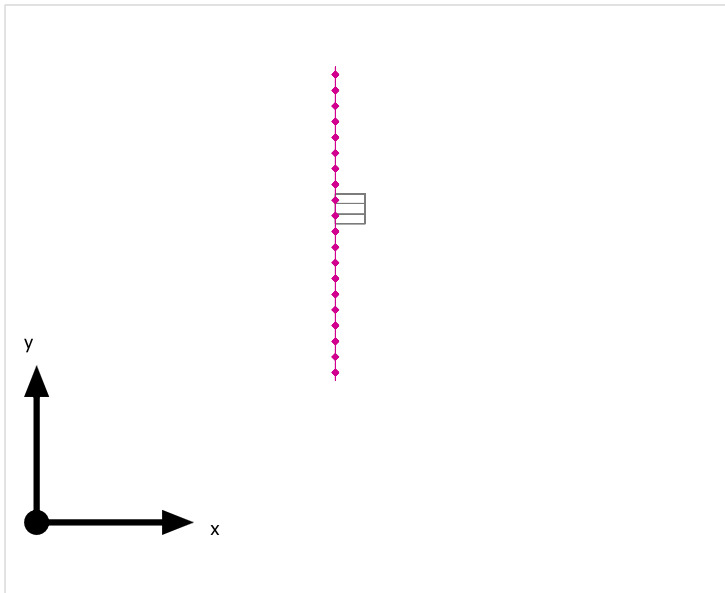


Site 1



Maintenance factor: 0.80

Calculation surface 1 / Perpendicular illuminance



Maintenance factor: 0.80

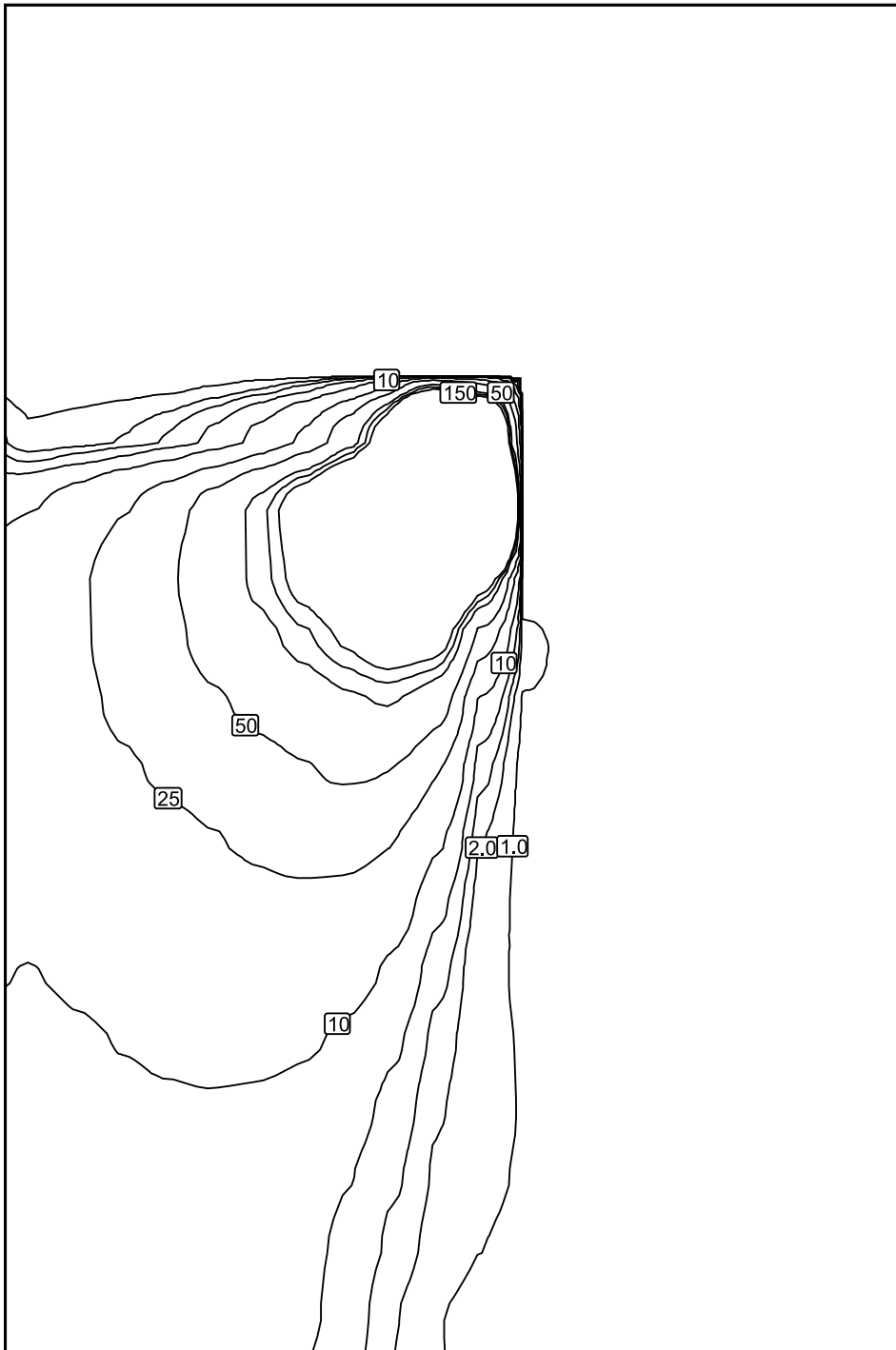
Calculation surface 1: Perpendicular illuminance (Grid)

Light scene: Light scene 1

Average: 32.9 lx, Min: 0.00 lx, Max: 2460 lx, Min/average: 0.00, Min/max: 0.00

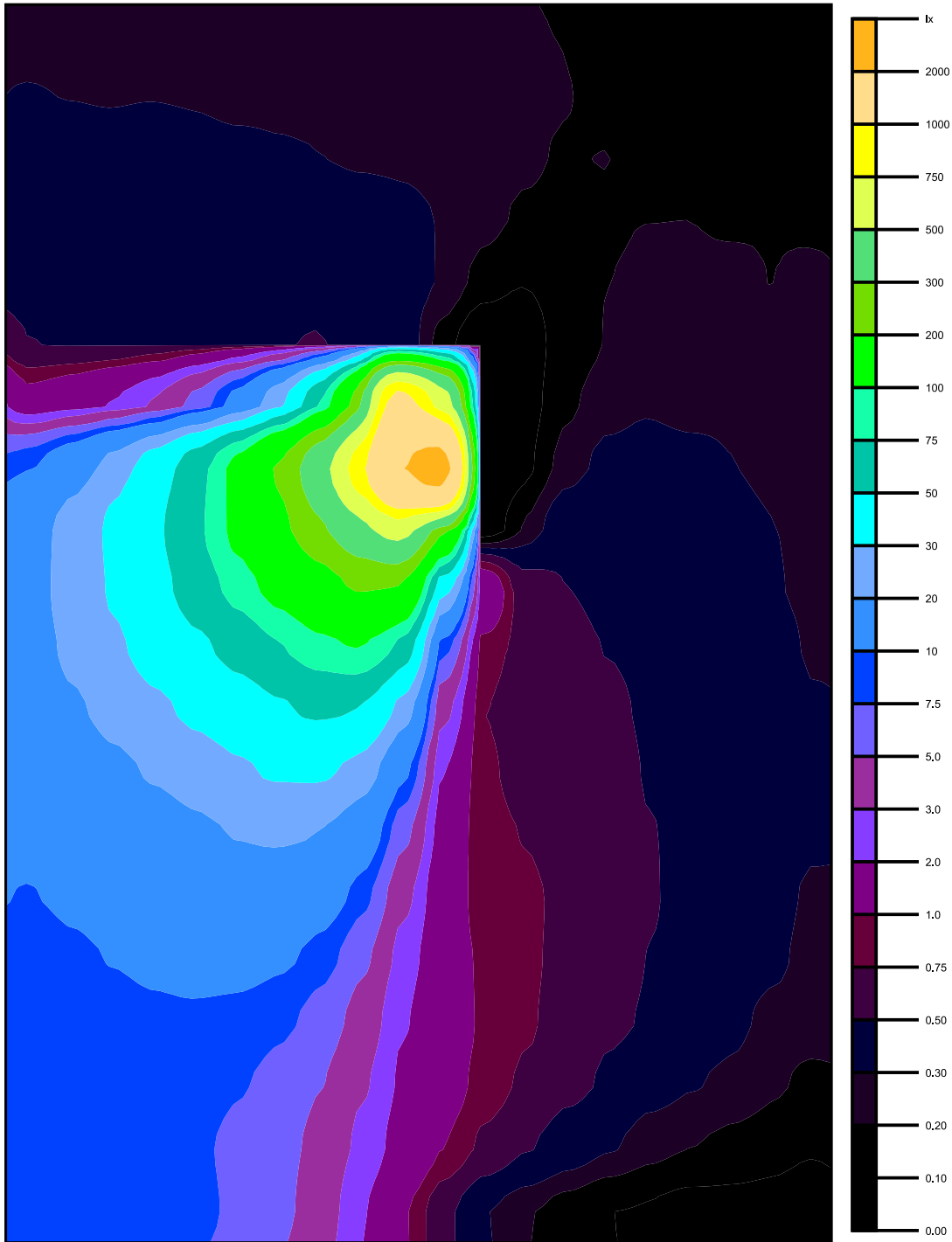
Height: 0.750 m

Isolines [lx]



Scale: 1 : 8

False colours [lx]



Scale: 1 : 8