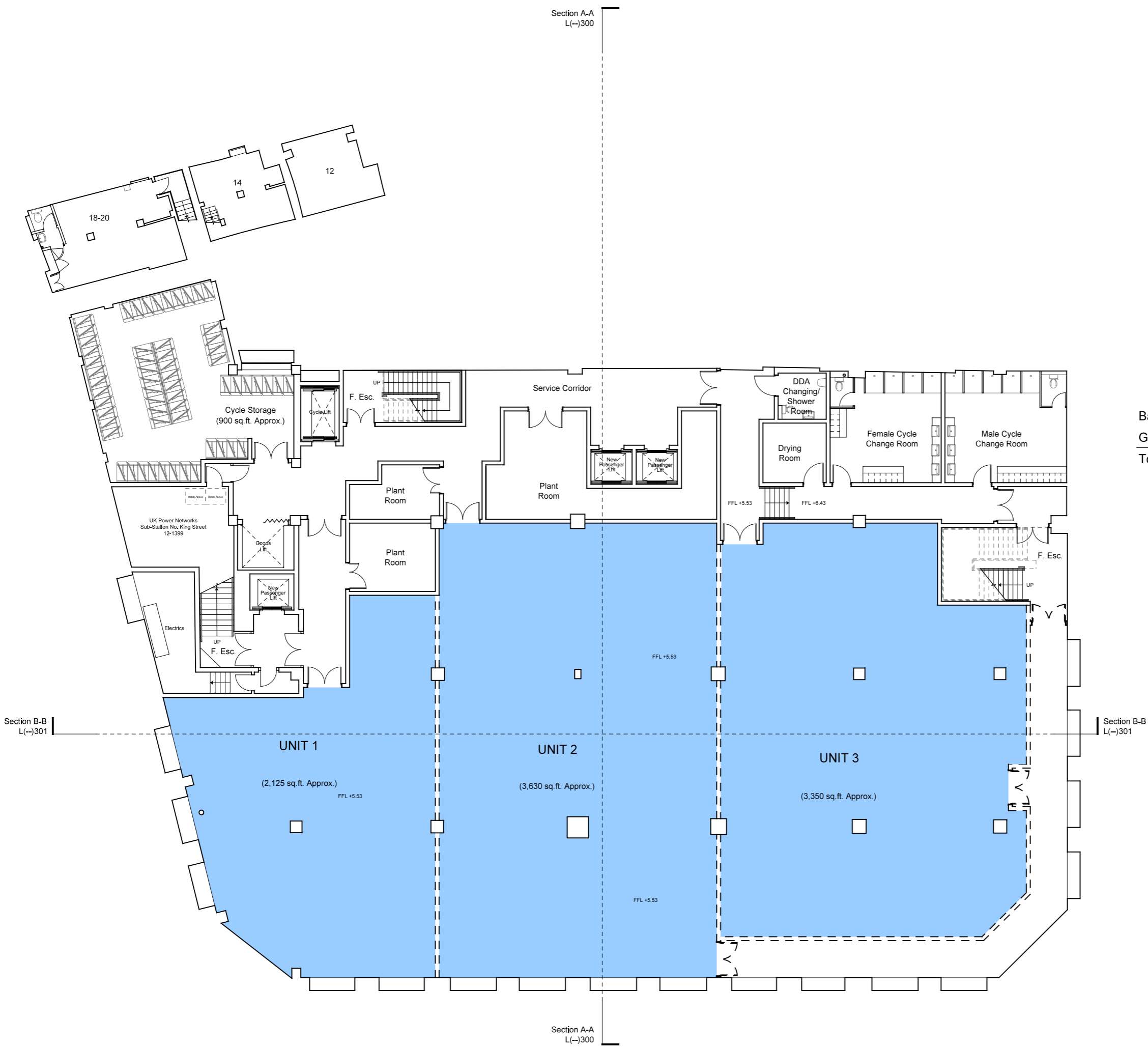
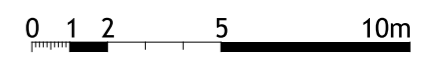


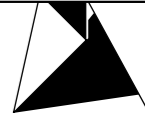
Dimensions are not to be scaled from this drawing.
 This drawing is based on current available information and should not be relied on as accurate measurements of usable space.
 This drawing is the property of the Colman Partnership Ltd. and Copyright is reserved by them. The drawing is issued on condition that it is not copied or disclosed by or to any unauthorised persons without the prior consent in writing of the Colman Partnership Ltd.



	UNIT 1	UNIT 2	UNIT 3
Basement	(2,125 sq. ft. Approx.)	(3,630 sq. ft. Approx.)	(3,350 sq. ft. Approx.)
Ground Floor	(2,570 sq. ft. Approx.)	(3,850 sq. ft. Approx.)	(4,290 sq. ft. Approx.)
Total	(4,695 sq. ft. Approx.)	(7,480 sq. ft. Approx.)	(7,640 sq. ft. Approx.)



INFORMATION ONLY



colman architects

Project
 75-81 George Street
 Richmond, TW9 1HA

Title
 Proposed Basement Floor Plan
 3 RETAILER OPTION

Scale 1:200 @ A3	1:100 @ A1	Date 24/02/20
Drawn by JB	Checked by Proj. Arch.	Checked By Manager
Drawing No. 1720/SK(--)-245	Revision -	

The Colman Partnership Limited
 27 Harcourt Street
 London
 W1H 4HP
 Telephone: 020 7535 2040
 Facsimile: 020 7535 2041
 email: projects@colmanarchitects.co.uk
www.colmanarchitects.co.uk

CAD Filename: R:\T\CP_Job\1720 - HOF, 75 - 81 George Street, Richmond, London\2 SHTS\SK(--)-245.dgn
 28/02/2020

Section B-B
L(-)301

Section B-B
L(-)301

Section A-A
L(-)300