

# O'NEILL'S RICHMOND

(Formerly The Railway Tavern)  
28/29 The Quadrant  
Richmond  
TW9 1DN

**Client:** M&B  
**Date:** 10.02.20  
**Drawn by:** J.J  
**Revision:** 1



## MORGAN SIGNS AND DESIGN

Unit A4  
Walsall Enterprise Park  
Regal Drive  
Walsall  
WS2 9HQ  
T: 01922 635 726  
F: 01922 659 940

FOLLOW US 



**MORGAN**  
Signs & Design



# PROPOSED FRONT ELEVATION



PAINT  
REFS:



Dulux  
00NN/20/000



Black

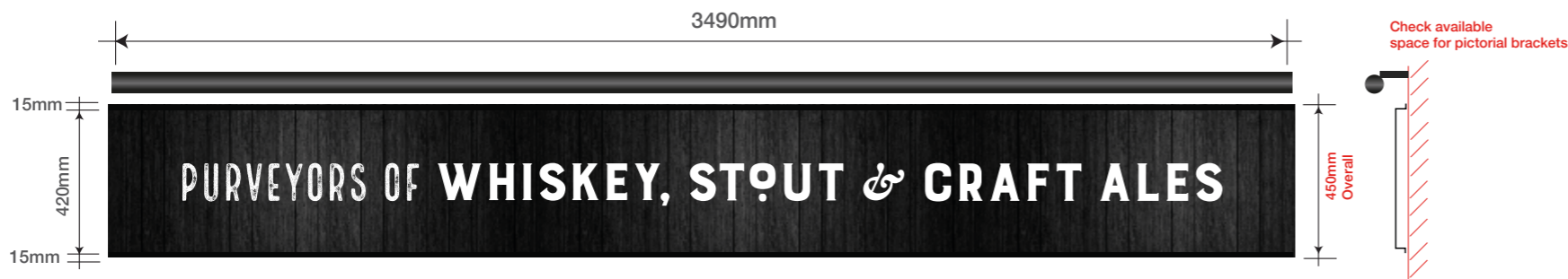


# PROPOSED SIGNAGE



### Item 1

New fabricated aluminium fascia sign. Sign to be wrapped with timber effect digital print. O'Neill's lettering to be built up fabricated letters with 60mm return edges, coated white with with rimplless opal faces. Letters to have face & halo illumination using white led's. Secondary text to be applied matt white vinyl and to be illuminated with ecolux mini led trough lights with warm white LED'd and an opal diffuser.. Fascias to have 15mm up and downstand to allow fixing into recessed area.  
 Overall finished size inclusive of up/down stands: 12645mm x 440mm x 30mm  
 SCALE: 1:40 @ A3  
 Max letter height: 400mm



### Item 2

New fabricated aluminium fascia sign. Sign to be wrapped with timber effect digital print. Text to be applied matt white vinyl. Fascia to have 15mm up and downstand to allow fixing into recessed area. Illuminated with ecolux mini led trough light with warm white LED'd and an opal diffuser..  
 Overall finished size inclusive of up/down stands: 3490mm x 450mm x 30mm  
 SCALE: 1:20 @ A3  
 Max letter height: 120mm



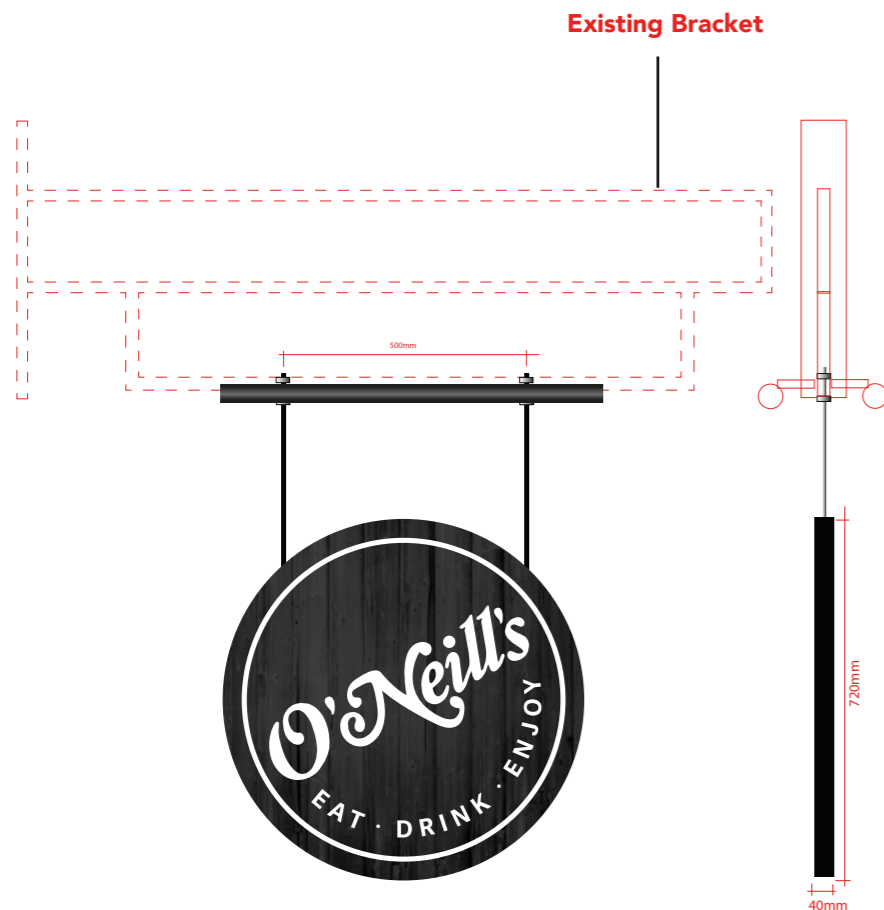
### Item 3

New fabricated aluminium fascia sign. Sign to be wrapped with timber effect digital print. O'Neill's lettering to be built up fabricated letters with 60mm return edges, coated white with with rimplless opal faces. Letters to have face & halo illumination using white led's. Fascia to have 15mm up and downstand to allow fixing into recessed area.  
 Overall finished size inclusive of up/down stands: 3290mm x 520mm x 30mm  
 SCALE: 1:20 @ A3  
 Max letter height: 400mm

PAINT REFS:  Black



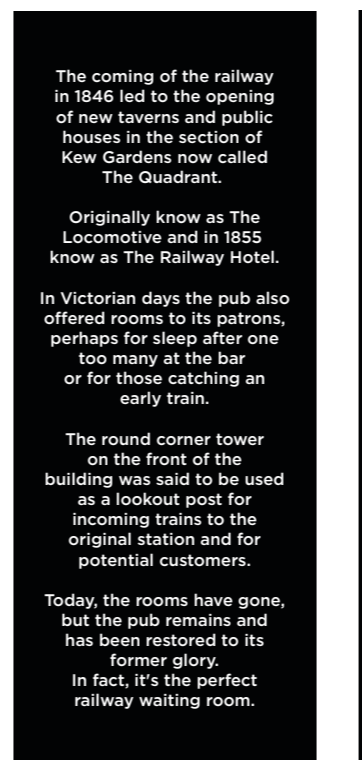
# PROPOSED SIGNAGE



### Item 4. QTY 2 off

Double sided hanging signs to fit to the existing projecting brackets.  
 Hanging sign to be 720mm diameter with 40mm return edge, fabricated in aluminium & coated black c/w applie digital prints to both sides.  
 10mm allthread rods c/w with washers and nylocs to suspend from the existing projecting brackets.  
 Size: 720mm x 720mm  
 Scale: 1:15

Max letter height: 182mm

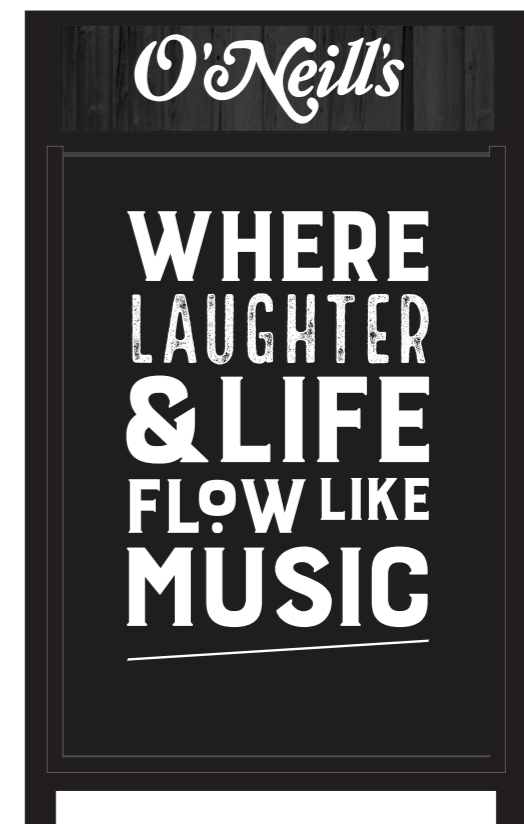


### ITEM 5. (1 off)

Fabricated ray sign coated black with applied digital print  
 Wording TBC

Size: 400mm x 1000mm x 20mm  
 Scale: 1:15

Max letter height: 12mm



### ITEM 6. (1 off)

Double sided 'A' Board sign, complete with A1 5mm foamex corex slat holder and pre printed back panel.

PAINT REFS:



Black



# PROPOSED REAR ELEVATION



PAINT  
REFS:



Black



**ITEM 7. (1 off)**

Signwritten to arch above gates  
Wording TBC

Size: 820mm wide sign writing.  
Scale: 1:10  
Max letter height: 179mm



**ITEM 8. (1 off)**

Signwritten

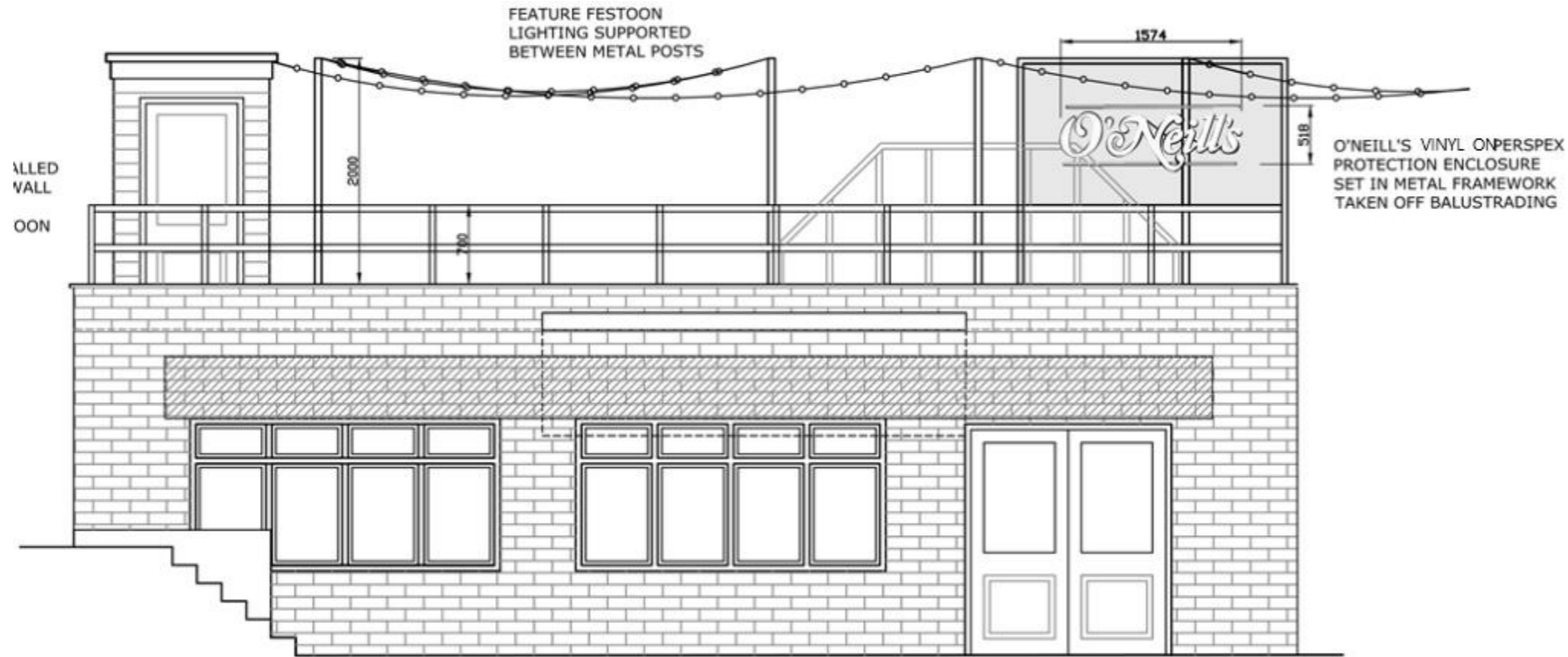
Size: 1950mm wide sign writing.  
Scale: 1:10  
Max letter height: 200mm

PAINT  
REFS:



Black

# PROPOSED SIGNAGE



PROPOSED ELEVATION C-C



O'Neill's white vinyl lettering on clear acrylic case with black vinyl on the back of case. Externally illuminated by an LED Trough Light fixed above the metal balustrading.

**ITEM 9. (1 off)**

Scale: 1:20



# EXISTING SITE



PAINT  
REFS: