

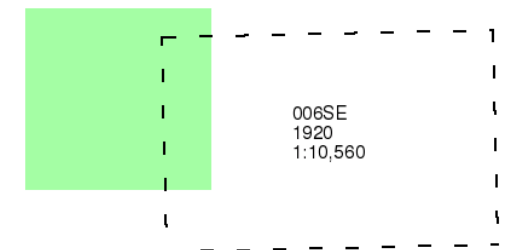
Surrey

Published 1920

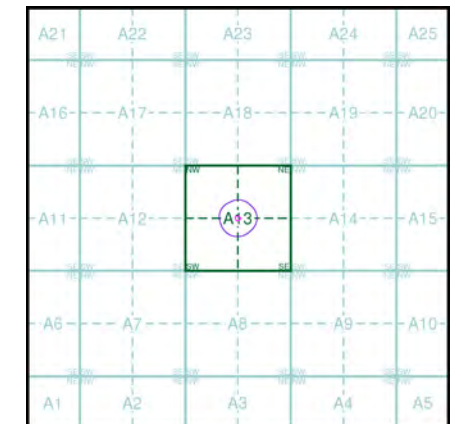
Source map scale - 1:10,560

The historical maps shown were reproduced from maps predominantly held at the scale adopted for England, Wales and Scotland in the 1840's. In 1854 the 1:2,500 scale was adopted for mapping urban areas; these maps were used to update the 1:10,560 maps. The published date given therefore is often some years later than the surveyed date. Before 1938, all OS maps were based on the Cassini Projection, with independent surveys of a single county or group of counties, giving rise to significant inaccuracies in outlying areas. In the late 1940's, a Provisional Edition was produced, which updated the 1:10,560 mapping from a number of sources. The maps appear unfinished - with all military camps and other strategic sites removed. These maps were initially overprinted with the National Grid. In 1970, the first 1:10,000 maps were produced using the Transverse Mercator Projection. The revision process continued until recently, with new editions appearing every 10 years or so for urban areas.

Map Name(s) and Date(s)



Historical Map - Slice A

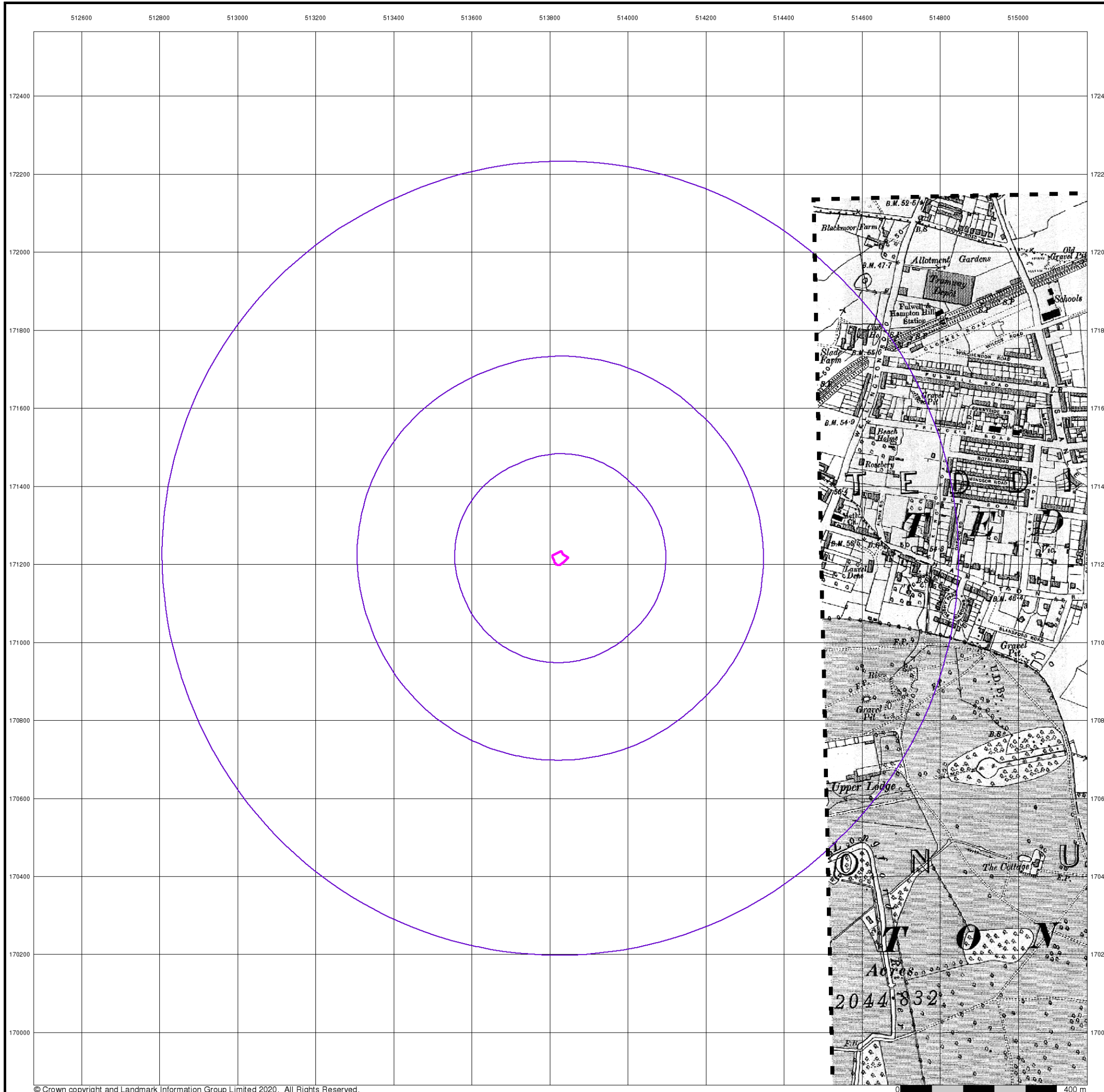


Order Details

Order Number: 239269821_1_1
 Customer Ref: J14219/JAC/AM
 National Grid Reference: 513830, 171220
 Slice: A
 Site Area (Ha): 0.09
 Search Buffer (m): 1000

Site Details

1 St James' Road, Hampton, Richmond, TW12 1QS



Middlesex

Published 1932 - 1935

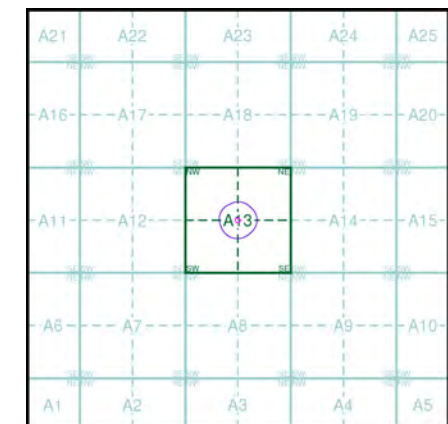
Source map scale - 1:10,560

The historical maps shown were reproduced from maps predominantly held at the scale adopted for England, Wales and Scotland in the 1840's. In 1854 the 1:2,500 scale was adopted for mapping urban areas; these maps were used to update the 1:10,560 maps. The published date given therefore is often some years later than the surveyed date. Before 1938, all OS maps were based on the Cassini Projection, with independent surveys of a single county or group of counties, giving rise to significant inaccuracies in outlying areas. In the late 1940's, a Provisional Edition was produced, which updated the 1:10,560 mapping from a number of sources. The maps appear unfinished - with all military camps and other strategic sites removed. These maps were initially overprinted with the National Grid. In 1970, the first 1:10,000 maps were produced using the Transverse Mercator Projection. The revision process continued until recently, with new editions appearing every 10 years or so for urban areas.

Map Name(s) and Date(s)

| | |
|---------------------------|---------------------------|
| 020SW 1932 1:10,560 | 020SE 1935 1:10,560 |
| 025NW 1934 1:10,560 | 025NE 1934 1:10,560 |

Historical Map - Slice A



Order Details

Order Number: 239269821_1_1
 Customer Ref: J14219/JAC/AM
 National Grid Reference: 513830, 171220
 Slice: A
 Site Area (Ha): 0.09
 Search Buffer (m): 1000

Site Details

1 St James' Road, Hampton, Richmond, TW12 1QS



Surrey

Published 1933

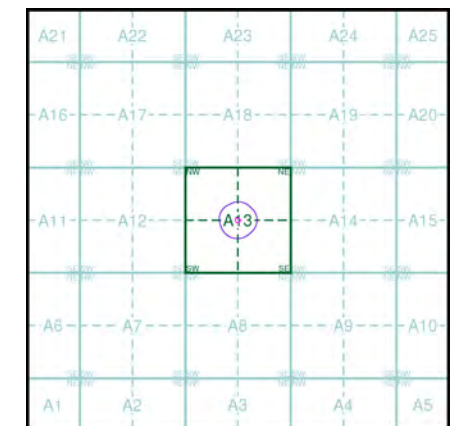
Source map scale - 1:10,560

The historical maps shown were reproduced from maps predominantly held at the scale adopted for England, Wales and Scotland in the 1840's. In 1854 the 1:2,500 scale was adopted for mapping urban areas; these maps were used to update the 1:10,560 maps. The published date given therefore is often some years later than the surveyed date. Before 1938, all OS maps were based on the Cassini Projection, with independent surveys of a single county or group of counties, giving rise to significant inaccuracies in outlying areas. In the late 1940's, a Provisional Edition was produced, which updated the 1:10,560 mapping from a number of sources. The maps appear unfinished - with all military camps and other strategic sites removed. These maps were initially overprinted with the National Grid. In 1970, the first 1:10,000 maps were produced using the Transverse Mercator Projection. The revision process continued until recently, with new editions appearing every 10 years or so for urban areas.

Map Name(s) and Date(s)

| | | |
|-------|------|----------|
| 006NE | 1933 | 1:10,560 |
| 006SE | 1933 | 1:10,560 |

Historical Map - Slice A

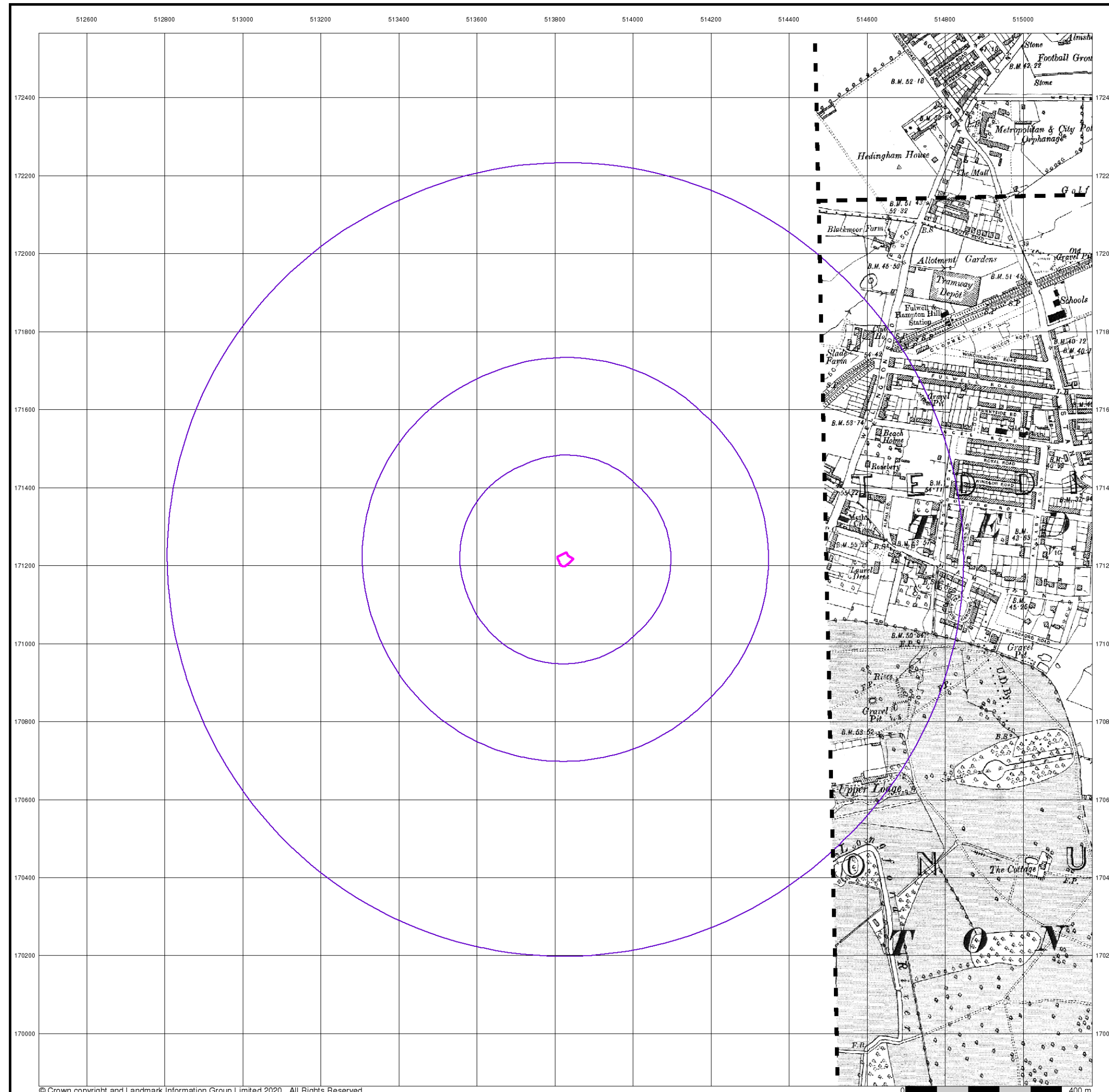


Order Details

Order Number: 239269821_1_1
 Customer Ref: J14219/JAC/AM
 National Grid Reference: 513830, 171220
 Slice: A
 Site Area (Ha): 0.09
 Search Buffer (m): 1000

Site Details

1 St James' Road, Hampton, Richmond, TW12 1QS



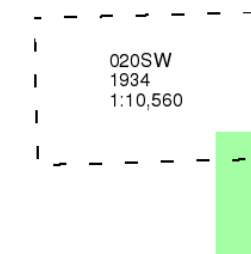
Middlesex

Published 1934

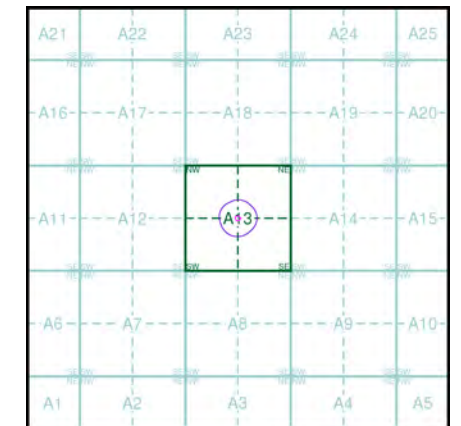
Source map scale - 1:10,560

The historical maps shown were reproduced from maps predominantly held at the scale adopted for England, Wales and Scotland in the 1840's. In 1854 the 1:2,500 scale was adopted for mapping urban areas; these maps were used to update the 1:10,560 maps. The published date given therefore is often some years later than the surveyed date. Before 1938, all OS maps were based on the Cassini Projection, with independent surveys of a single county or group of counties, giving rise to significant inaccuracies in outlying areas. In the late 1940's, a Provisional Edition was produced, which updated the 1:10,560 mapping from a number of sources. The maps appear unfinished - with all military camps and other strategic sites removed. These maps were initially overprinted with the National Grid. In 1970, the first 1:10,000 maps were produced using the Transverse Mercator Projection. The revision process continued until recently, with new editions appearing every 10 years or so for urban areas.

Map Name(s) and Date(s)



Historical Map - Slice A

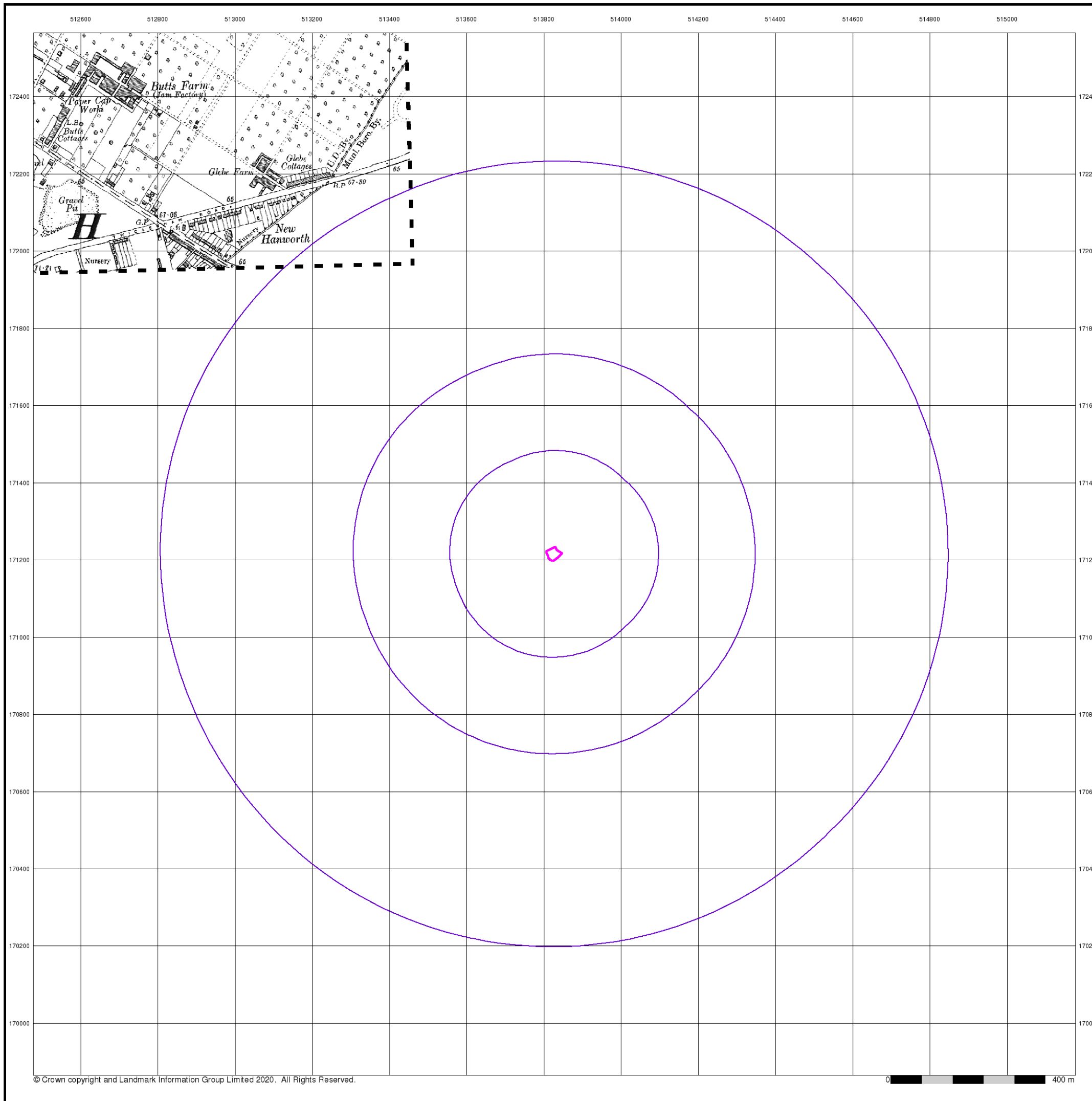


Order Details

Order Number: 239269821_1_1
 Customer Ref: J14219/JAC/AM
 National Grid Reference: 513830, 171220
 Slice: A
 Site Area (Ha): 0.09
 Search Buffer (m): 1000

Site Details

1 St James' Road, Hampton, Richmond, TW12 1QS



Middlesex

Published 1938

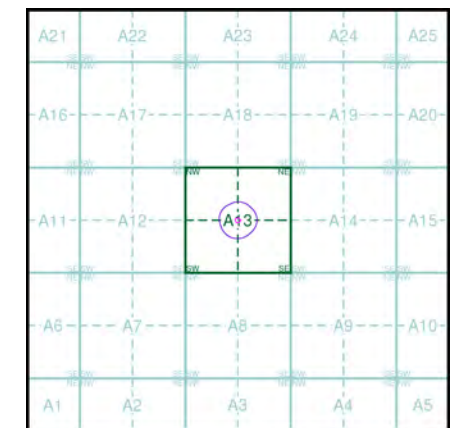
Source map scale - 1:10,560

The historical maps shown were reproduced from maps predominantly held at the scale adopted for England, Wales and Scotland in the 1840's. In 1854 the 1:2,500 scale was adopted for mapping urban areas; these maps were used to update the 1:10,560 maps. The published date given therefore is often some years later than the surveyed date. Before 1938, all OS maps were based on the Cassini Projection, with independent surveys of a single county or group of counties, giving rise to significant inaccuracies in outlying areas. In the late 1940's, a Provisional Edition was produced, which updated the 1:10,560 mapping from a number of sources. The maps appear unfinished - with all military camps and other strategic sites removed. These maps were initially overlaid with the National Grid. In 1970, the first 1:10,000 maps were produced using the Transverse Mercator Projection. The revision process continued until recently, with new editions appearing every 10 years or so for urban areas.

Map Name(s) and Date(s)

| | |
|---------------------------|---------------------------|
| 020SW 1938 1:10,560 | 020SE 1938 1:10,560 |
| 025NW 1938 1:10,560 | 025NE 1938 1:10,560 |

Historical Map - Slice A



Order Details

Order Number: 239269821_1_1
 Customer Ref: J14219/JAC/AM
 National Grid Reference: 513830, 171220
 Slice: A
 Site Area (Ha): 0.09
 Search Buffer (m): 1000

Site Details

1 St James' Road, Hampton, Richmond, TW12 1QS



Surrey

Published 1938

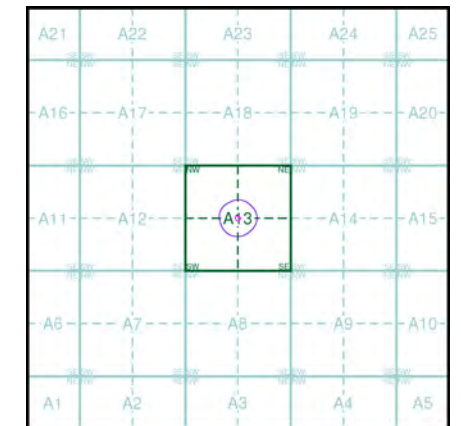
Source map scale - 1:10,560

The historical maps shown were reproduced from maps predominantly held at the scale adopted for England, Wales and Scotland in the 1840's. In 1854 the 1:2,500 scale was adopted for mapping urban areas; these maps were used to update the 1:10,560 maps. The published date given therefore is often some years later than the surveyed date. Before 1938, all OS maps were based on the Cassini Projection, with independent surveys of a single county or group of counties, giving rise to significant inaccuracies in outlying areas. In the late 1940's, a Provisional Edition was produced, which updated the 1:10,560 mapping from a number of sources. The maps appear unfinished - with all military camps and other strategic sites removed. These maps were initially overprinted with the National Grid. In 1970, the first 1:10,000 maps were produced using the Transverse Mercator Projection. The revision process continued until recently, with new editions appearing every 10 years or so for urban areas.

Map Name(s) and Date(s)

| | | |
|-------|------|----------|
| 006NE | 1938 | 1:10,560 |
| 006SW | 1938 | 1:10,560 |
| 006SE | 1938 | 1:10,560 |

Historical Map - Slice A



Order Details

Order Number: 239269821_1_1
 Customer Ref: J14219/JAC/AM
 National Grid Reference: 513830, 171220
 Slice: A
 Site Area (Ha): 0.09
 Search Buffer (m): 1000

Site Details

1 St James' Road, Hampton, Richmond, TW12 1QS



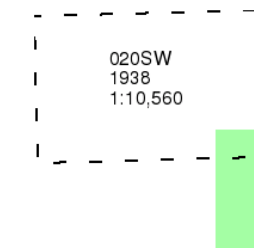
Middlesex

Published 1938

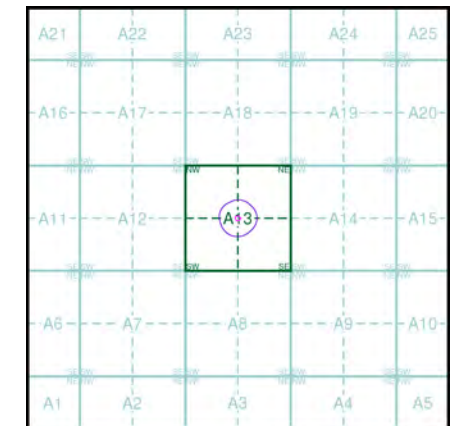
Source map scale - 1:10,560

The historical maps shown were reproduced from maps predominantly held at the scale adopted for England, Wales and Scotland in the 1840's. In 1854 the 1:2,500 scale was adopted for mapping urban areas; these maps were used to update the 1:10,560 maps. The published date given therefore is often some years later than the surveyed date. Before 1938, all OS maps were based on the Cassini Projection, with independent surveys of a single county or group of counties, giving rise to significant inaccuracies in outlying areas. In the late 1940's, a Provisional Edition was produced, which updated the 1:10,560 mapping from a number of sources. The maps appear unfinished - with all military camps and other strategic sites removed. These maps were initially overprinted with the National Grid. In 1970, the first 1:10,000 maps were produced using the Transverse Mercator Projection. The revision process continued until recently, with new editions appearing every 10 years or so for urban areas.

Map Name(s) and Date(s)



Historical Map - Slice A

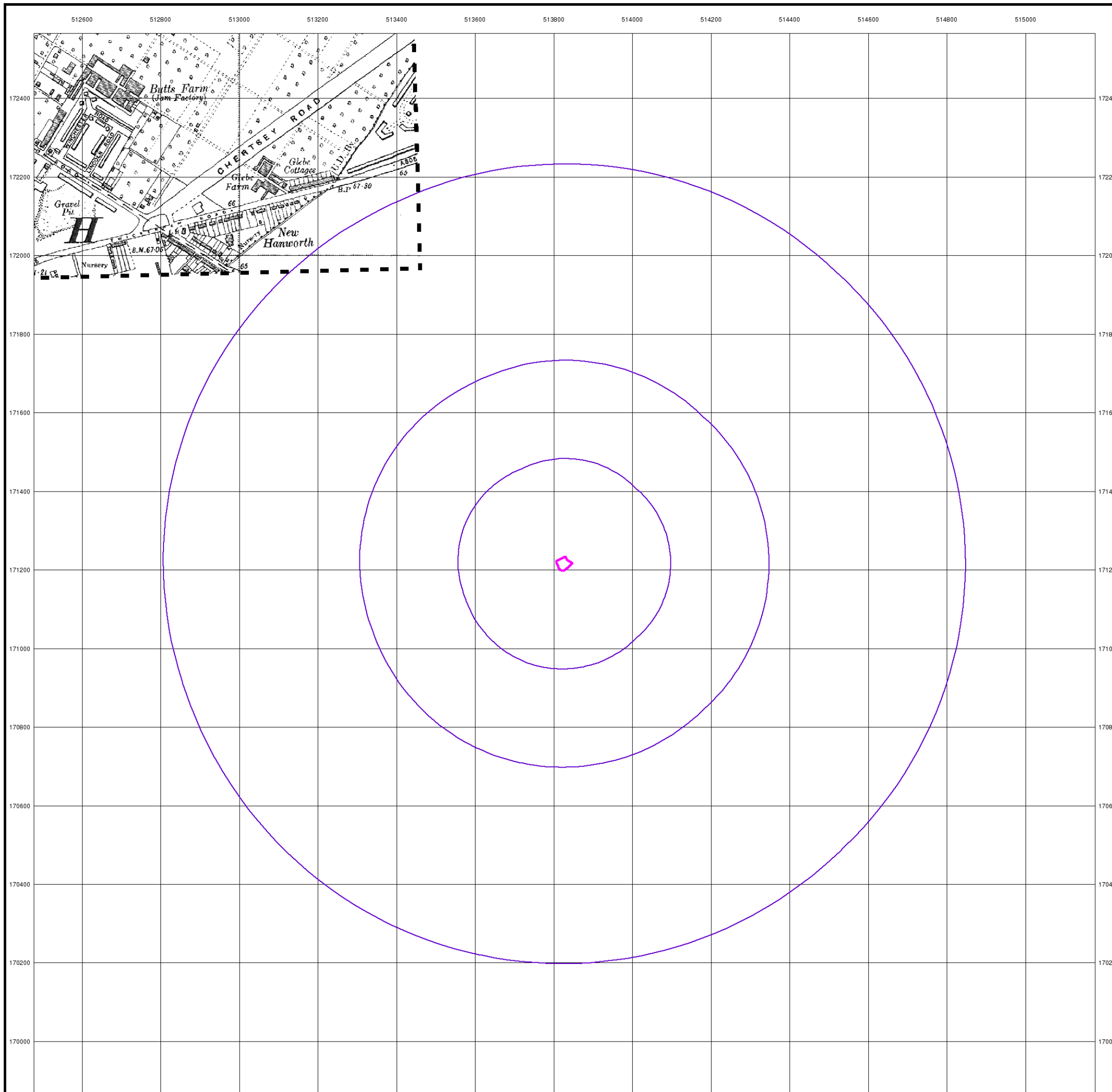


Order Details

Order Number: 239269821_1_1
 Customer Ref: J14219/JAC/AM
 National Grid Reference: 513830, 171220
 Slice: A
 Site Area (Ha): 0.09
 Search Buffer (m): 1000

Site Details

1 St James' Road, Hampton, Richmond, TW12 1QS



Surrey

Published 1938

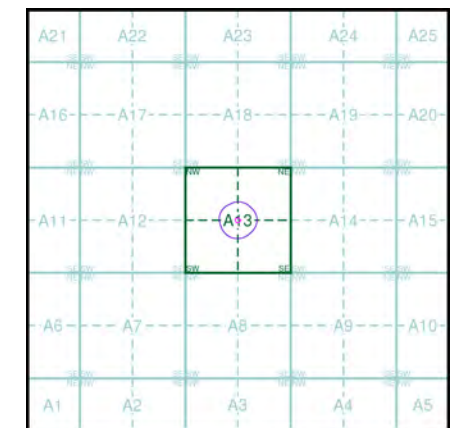
Source map scale - 1:10,560

The historical maps shown were reproduced from maps predominantly held at the scale adopted for England, Wales and Scotland in the 1840's. In 1854 the 1:2,500 scale was adopted for mapping urban areas; these maps were used to update the 1:10,560 maps. The published date given therefore is often some years later than the surveyed date. Before 1938, all OS maps were based on the Cassini Projection, with independent surveys of a single county or group of counties, giving rise to significant inaccuracies in outlying areas. In the late 1940's, a Provisional Edition was produced, which updated the 1:10,560 mapping from a number of sources. The maps appear unfinished - with all military camps and other strategic sites removed. These maps were initially overprinted with the National Grid. In 1970, the first 1:10,000 maps were produced using the Transverse Mercator Projection. The revision process continued until recently, with new editions appearing every 10 years or so for urban areas.

Map Name(s) and Date(s)

| | | |
|-------|------|----------|
| 006NE | 1938 | 1:10,560 |
| 006SW | 1938 | 1:10,560 |
| 006SE | 1938 | 1:10,560 |

Historical Map - Slice A



Order Details

Order Number: 239269821_1_1
 Customer Ref: J14219/JAC/AM
 National Grid Reference: 513830, 171220
 Slice: A
 Site Area (Ha): 0.09
 Search Buffer (m): 1000

Site Details

1 St James' Road, Hampton, Richmond, TW12 1QS



Ordnance Survey Plan

Published 1940

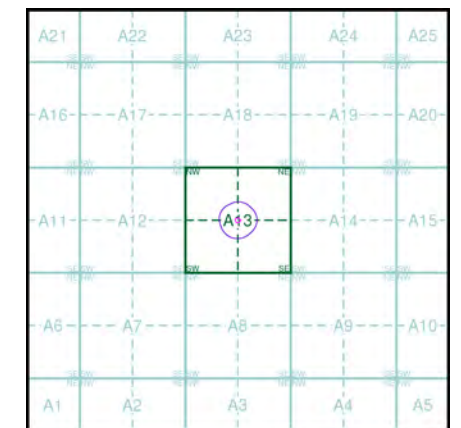
Source map scale - 1:10,000

The historical maps shown were reproduced from maps predominantly held at the scale adopted for England, Wales and Scotland in the 1840's. In 1854 the 1:2,500 scale was adopted for mapping urban areas; these maps were used to update the 1:10,560 maps. The published date given therefore is often some years later than the surveyed date. Before 1938, all OS maps were based on the Cassini Projection, with independent surveys of a single county or group of counties, giving rise to significant inaccuracies in outlying areas. In the late 1940's, a Provisional Edition was produced, which updated the 1:10,560 mapping from a number of sources. The maps appear unfinished - with all military camps and other strategic sites removed. These maps were initially overprinted with the National Grid. In 1970, the first 1:10,000 maps were produced using the Transverse Mercator Projection. The revision process continued until recently, with new editions appearing every 10 years or so for urban areas.

Map Name(s) and Date(s)

| | |
|----------|------|
| TQ17SE | 1940 |
| 1:10,560 | |
| TQ16NE | 1940 |
| 1:10,560 | |

Historical Map - Slice A

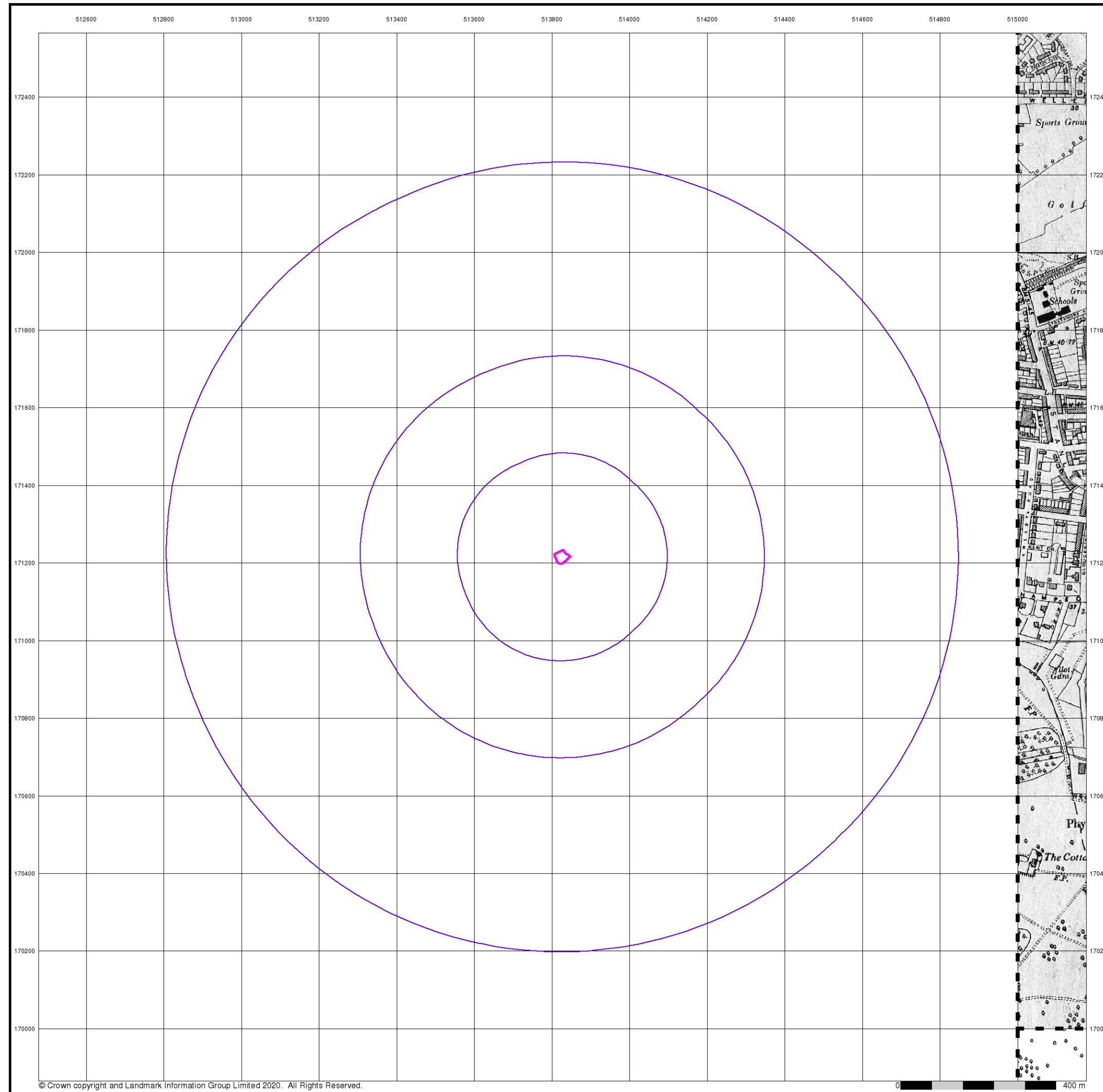


Order Details

Order Number: 239269821_1_1
 Customer Ref: J14219/JAC/AM
 National Grid Reference: 513830, 171220
 Slice: A
 Site Area (Ha): 0.09
 Search Buffer (m): 1000

Site Details

1 St James' Road, Hampton, Richmond, TW12 1QS



Historical Aerial Photography

Published 1948

Source map scale - 1:10,560

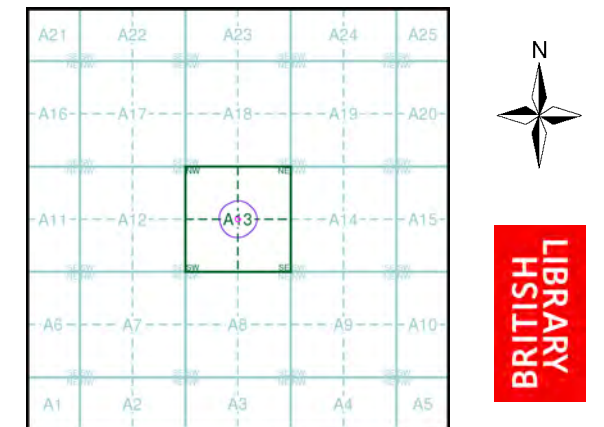
The Historical Aerial Photos were produced by the Ordnance Survey at a scale of 1:1,250 and 1:10,560 from Air Force photography. They were produced between 1944 and 1951 as an interim measure, pending preparation of conventional mapping, due to post war resource shortages. New security measures in the 1950's meant that every photograph was re-checked for potentially unsafe information with security sites replaced by fake fields or clouds. The original editions were withdrawn and only later made available after a period of fifty years although due to the accuracy of the editing, without viewing both revisions it is not easy to spot the edits. Where available Landmark have included both revisions.

© Landmark Information Group and/or Data Suppliers 2010.

Map Name(s) and Date(s)

| | |
|-----------------------------|-----------------------------|
| TQ 17SW 1948 1:10,560 | TQ 17SE 1948 1:10,560 |
| TQ 16NW 1948 1:10,560 | TQ 16NE 1948 1:10,560 |

Historical Aerial Photography - Slice A



Order Details

Order Number: 239269821_1_1
 Customer Ref: J14219/JAC/AM
 National Grid Reference: 513830, 171220
 Slice: A
 Site Area (Ha): 0.09
 Search Buffer (m): 1000

Site Details

1 St James' Road, Hampton, Richmond, TW12 1QS



Ordnance Survey Plan

Published 1960 - 1966

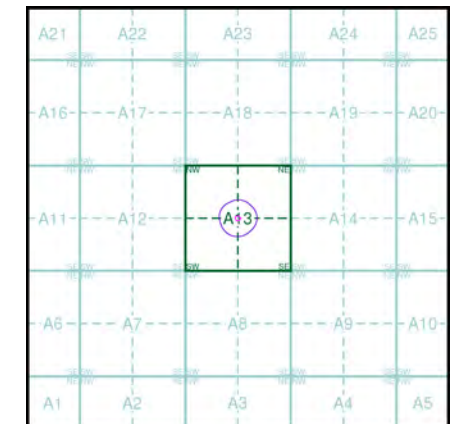
Source map scale - 1:10,000

The historical maps shown were reproduced from maps predominantly held at the scale adopted for England, Wales and Scotland in the 1840's. In 1854 the 1:2,500 scale was adopted for mapping urban areas; these maps were used to update the 1:10,560 maps. The published date given therefore is often some years later than the surveyed date. Before 1938, all OS maps were based on the Cassini Projection, with independent surveys of a single county or group of counties, giving rise to significant inaccuracies in outlying areas. In the late 1940's, a Provisional Edition was produced, which updated the 1:10,560 mapping from a number of sources. The maps appear unfinished - with all military camps and other strategic sites removed. These maps were initially overprinted with the National Grid. In 1970, the first 1:10,000 maps were produced using the Transverse Mercator Projection. The revision process continued until recently, with new editions appearing every 10 years or so for urban areas.

Map Name(s) and Date(s)

| | |
|----------|----------|
| TQ17SW | TQ17SE |
| 1960 | 1966 |
| 1:10,560 | 1:10,560 |
| TQ16NW | TQ16NE |
| 1962 | 1962 |
| 1:10,560 | 1:10,560 |

Historical Map - Slice A



Order Details

Order Number: 239269821_1_1
 Customer Ref: J14219/JAC/AM
 National Grid Reference: 513830, 171220
 Slice: A
 Site Area (Ha): 0.09
 Search Buffer (m): 1000

Site Details

1 St James' Road, Hampton, Richmond, TW12 1QS



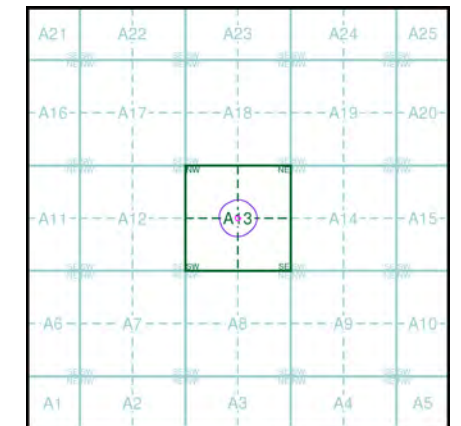
Ordnance Survey Plan
Published 1965 - 1968
Source map scale - 1:10,000

The historical maps shown were reproduced from maps predominantly held at the scale adopted for England, Wales and Scotland in the 1840's. In 1854 the 1:2,500 scale was adopted for mapping urban areas; these maps were used to update the 1:10,560 maps. The published date given therefore is often some years later than the surveyed date. Before 1938, all OS maps were based on the Cassini Projection, with independent surveys of a single county or group of counties, giving rise to significant inaccuracies in outlying areas. In the late 1940's, a Provisional Edition was produced, which updated the 1:10,560 mapping from a number of sources. The maps appear unfinished - with all military camps and other strategic sites removed. These maps were initially overprinted with the National Grid. In 1970, the first 1:10,000 maps were produced using the Transverse Mercator Projection. The revision process continued until recently, with new editions appearing every 10 years or so for urban areas.

Map Name(s) and Date(s)

| | | |
|--------|------|----------|
| TQ17SW | 1966 | 1:10,560 |
| TQ16NW | 1965 | 1:10,560 |
| TQ16NE | 1968 | 1:10,560 |

Historical Map - Slice A



Order Details

Order Number: 239269821_1_1
 Customer Ref: J14219/JAC/AM
 National Grid Reference: 513830, 171220
 Slice: A
 Site Area (Ha): 0.09
 Search Buffer (m): 1000

Site Details

1 St James' Road, Hampton, Richmond, TW12 1QS

