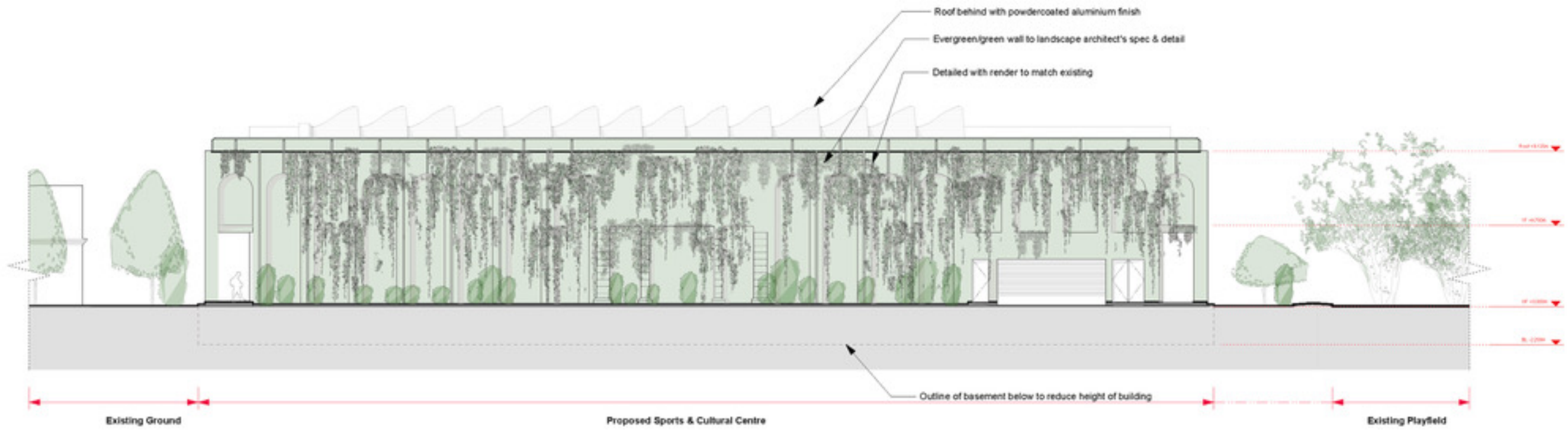


Proposed Front Elevation E-E 1:200@A2



Proposed Rear Elevation F-F 1:200@A2

N.B: DRAWINGS FOR INFORMATION ONLY

:For Planning

PROJECT :HAR Harrodian School, Lonsdale Road, SW13 9QN :HAR Sports & Cultural Centre		DRAWN BY :KK	CHECKED BY :MD	PROJECT NO :HAR300	ISSUE FOR Planning SCALE 1:200@A2 DATE JAN 21	REVISION Revision	0 2 4 6 8 10 Meters	Notes: 1. Do not scale from this drawing. 2. All dimensions to be checked on site by contractor and such dimensions to be his responsibility. 3. Report all drawing errors and omissions to the architect. © George Watt Partnership 2019	GWP RIBA CHARTERED ARCHITECTS a/c 2 The Quadrant, London SW20 8SP t: +44(0) 20 85400091 e: gwp@london.gwp.com © George Watt Partnership 2019
--	--	-----------------	-------------------	-----------------------	--	----------------------	------------------------	---	---