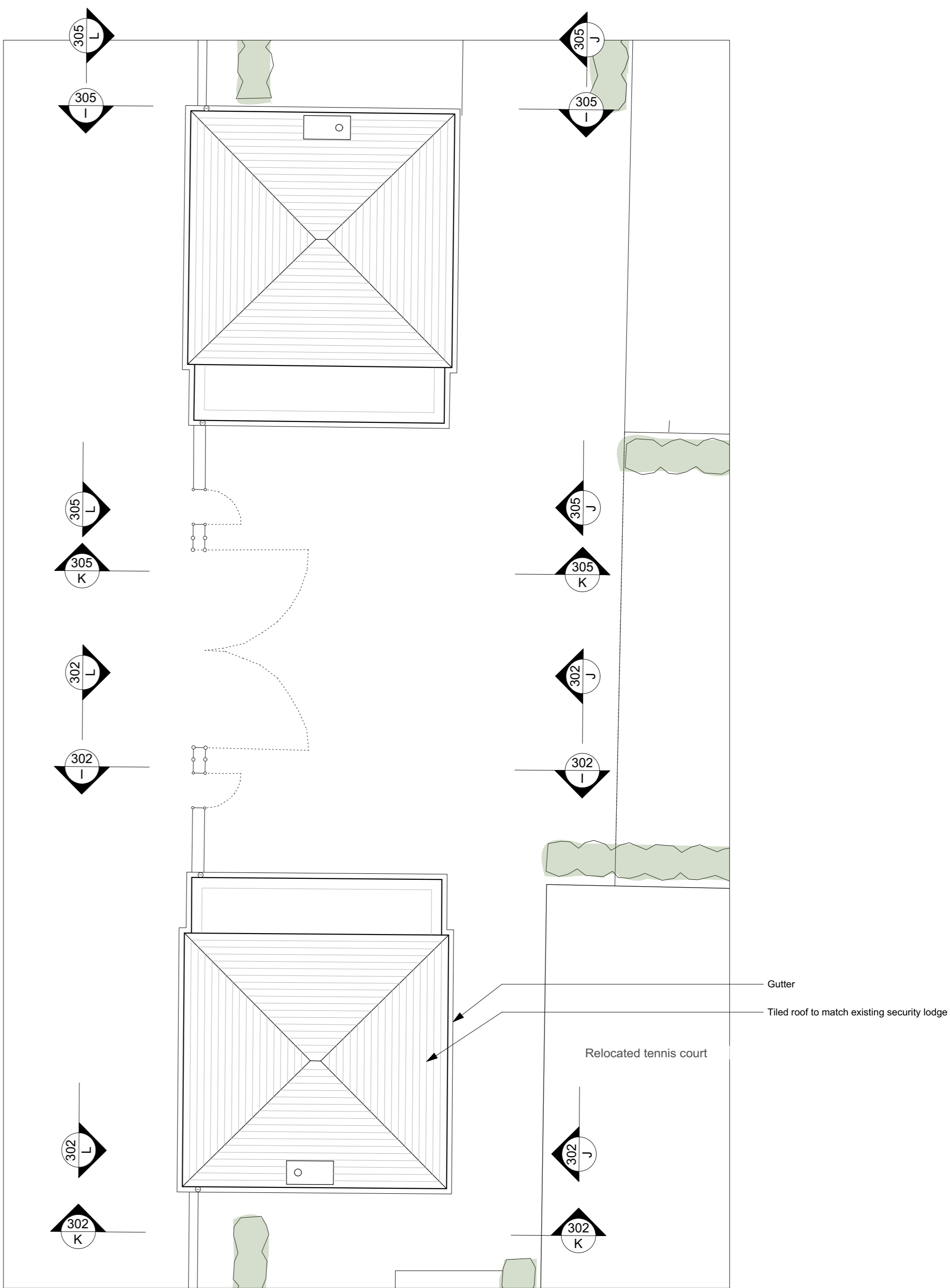


Proposed Changing Rooms Ground Floor Plan 1:100@A2



Proposed Changing Rooms Roof Plan 1:100@A2

:For Planning

N.B: DRAWINGS FOR INFORMATION ONLY

PROJECT: :HAR Harrodian School, Lonsdale Road, SW13 9QN	DRAWN BY: :KK	CHECKED BY: :MD
--	------------------	--------------------

PROJECT: :HAR Sports & Cultural Centre	DRAWING: ISSUE FOR: Planning	SCALE: 1:100@A2	DATE: JAN20
---	---------------------------------	-----------------	-------------

PROJECT: :HAR105A	:REVISION :Revision
----------------------	------------------------



Notes:
 1. Do not scale from this drawing.
 2. All dimensions to be checked on site by contractor and such dimensions to be his responsibility.
 3. Report all drawing errors and omissions to the architect.
 © George Watt Partnership 2019

GWP RIBA CHARTERED ARCHITECTS
 a: 2 The Quadrant, London SW20 8SP
 t: +44(0) 20 85400591 .. e: gwatt.arch@gmail.com
 © George Watt Partnership 2019