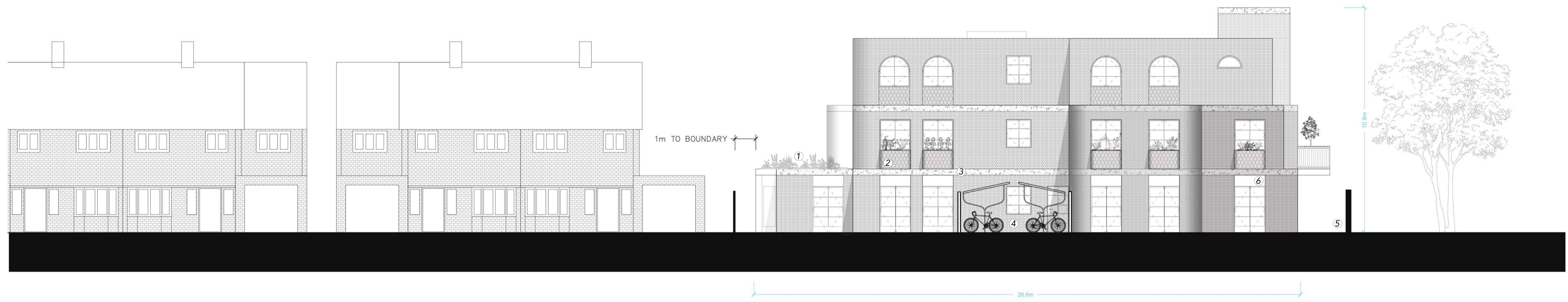


GENERAL NOTES

1. No dimensions to be scaled from this drawing
 2. Any Discrepancies found between this drawing and other documents should be referred immediately to the consultants
 3. This drawing should be removed from currency immediately if a revised version is issued
 4. All dimensions in mm's
- © Copyright Reserved
This drawing and its subject matter are the confidential property of W&D and shall not be copied, reproduced, used, disclosed to others without the prior written authority of W&D



- 1 Sedum + wildflower flat roof at rear
- 2 Planter-style window boxes with hung tiles
- 3 Stone/concrete tile finish to floor slabs
- 4 Enclosed+covered store for 18x bicycles
- 5 Fencing panels with climbing plants
- 6 Decorative panels above ground floor doors



| Rev | Date | Reason For Issue | CI |
|---------------|----------------------------------|--|-----|
| WANDD | | T + 44 (0) 7976 36 44 59 TOM@WANDD.CO.UK WWW.WANDD.CO.UK | |
| PROJECT | 1 ST JAMES' ROAD HAMPTON HILL | | |
| DRAWING TITLE | ELEVATION A UXBRIDGE ROAD | | |
| JOB NUMBER | 1808 | DRAWING NUMBER | 905 |
| DRAWN | TR | CHECKED | |
| SCALE | 1/100 | PAPER SIZE | A1 |
| DATE | 6.5.20 | REVISION | |