

Whitton Junction

HOSPITAL BRIDGE ROAD

Existing grassland to be overseeded to areas of poor quality with 100% Wildflower Mix.

Areas of Knotweed removed to be replaced with Species rich grass seed.

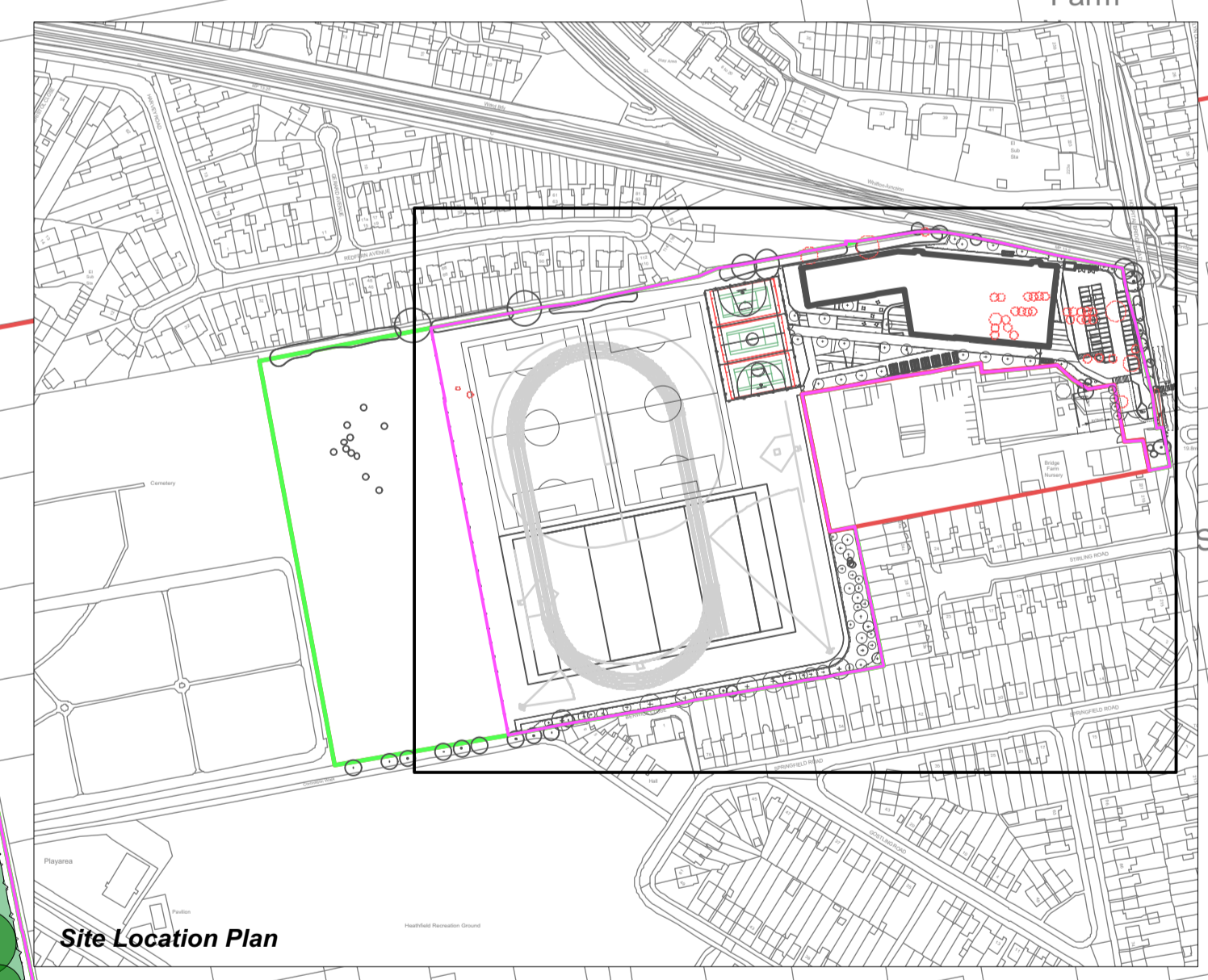
Existing grassland replaced
 Indicative extent of construction zone to building
 Location of temporary protective fence to be laid out on site for planning inspection.

Existing grassland retained

Existing grassland retained

4-Betula pendula

Specimen trees	
SPECIES	SPECIFICATION (in accordance with NPS)
Proposed Trees: Specimens	
Betula pendula	18-20cm Girth 400-450cm RB Extra Heavy Standard, 2m clear stem
Carpinus betulus 'Fastigiata'	18-20cm Girth 425-600cm RB Extra Heavy Standard, 1.75m clear stem
Acer platanoides	18-20cm Girth 400-450cm RB Extra Heavy Standard, 2m clear stem
Tilia cordata 'Greenspire'	18.20cm Girth 425-600cm RB Extra Heavy Standard, 1.75m clear stem
Liquidamber styraciflua	18-20cm Girth 400-450cm RB Extra Heavy Standard, 200m clear stem



Site Location Plan

Green wall mix - Sunny

- Clematis armandii
- Garrya elliptica 'James Roof'
- Hydrangea anomala subsp. petiolaris
- Rosa 'Alberic Barbier'

Green wall mix - Shady

- Euonymus fortunei 'Dart's Blanket'
- Hedera helix 'Woerner'
- Hedera helix 'Green Ripple'
- Hedera hibernica
- Hydrangea anomala subsp. petiolaris

Hedge 1

- Acer campestre
- Corylus avellana
- Crataegus monogyna
- Prunus padus
- Prunus spinosa
- Rosa canina

Hedge 2

Single species - Carpinus betulus

Woodland Tree Mix

- Acer campestre
- Acer platanoides
- Betula pendula
- Carpinus betulus
- Prunus padus
- Pinus sylvestris
- Populus nigra
- Tilia cordata
- Tilia platyphyllos

Existing vegetation retained
 Grass overseeded with Emorsgate EG1

Existing vegetation retained
 Grass overseeded with 100% Wildflower Mix MAS-WWLD3

Habitat corridor

Notes
 1. Drawing not to be scaled for construction or setting out purposes.
 2. To be read in conjunction with Project Risk Register REF: XXX
 3. To be read in conjunction with all other Landscape Architect's drawings

KEY

- Full sun planting mix**
- Cotinus coggygria
 - Deschampsia cespitosa
 - Rudbeckia fulgida var. sullivanti 'Goldsturm'
 - Salvia nemorosa 'Caradonna'
 - Stipa tenuissima

- Partial sun planting mix**
- Aster frikartii 'Monch'
 - Geranium macrorrhizum 'White-Ness'
 - Pachysandra terminalis 'Green Carpet'
 - Rudbeckia fulgida var. sullivanti 'Goldsturm'
 - Saxifraga x urbium

- Entrance herbaceous planting mix**
- Aster frikartii 'Monch'
 - Calamagrostis x acutiflora 'Karl Foerster'
 - Falstia japonica
 - Geranium macrorrhizum 'White-Ness'
 - Lavendula angustifolia 'Hidcote'
 - Pachysandra terminalis 'Green Carpet'

- Sports fields grass seeding**
- Chardin Perennial Ryegrass
 - Eurocordus Perennial Ryegrass
 - Eurosport Perennial Ryegrass
 - EuroPitch Perennial Ryegrass

- Amenity grass seeding**
- Aberace (small) w/ clover
 - Abercham Slender Creeping Red Fescue
 - Aberfleece Sheeps Fescue
 - Aberroyal Browntop Bentgrass
 - Aberavon (Late) Dipper Ryegrass

- Species rich grassland**
- Emorsgate EG1 General Purpose Meadow Grass Mix

- Woodland planting mix**
- Acer campestre
 - Betula pendula
 - Crataegus monogyna
 - Cornus alba
 - Cornus sanguinea
 - Corylus avellana
 - Rosa canina
 - Sambucus nigra

ID	RISK	MITIGATION	Date Mitigated
RESIDUAL PROJECT RISKS			

DATE	SUITABILITY	REV	DESCRIPTION OF REVISION	DRAWN BY	APPROVED BY
29.06.20	S2	P06	Issued for Planning Wildlife corridor indicated 100% Wildflower Mix added	AS	RA
12.06.20	S2	P05	Issued for Planning Planning comments incorporated (11th June 2020)	AS	--
05.06.20	S2	P04	Issued for Planning	AS	--
10.01.19	S3	P03	Issued for contractors proposals.	KH	LA
13.11.18	S2	P02	Highways entrance and adjacent area updated.	HT	LA

REVISIONS

SUITABILITY
S2 - For planning

ares
 LANDSCAPE ARCHITECTS

Ares Landscape Architects LTD
 Gallecrasher
 51 Eyre Lane
 Sheffield
 S1 4RB

t: 0114 276 2000
 e: hello@ares.eu.com
 w: ares.eu.com

CLIENT:
Bowmer and Kirkland

PROJECT TITLE:
Turing House School

DRAWING TITLE:
Planting Strategy

DRAWING SCALE: 1:500
 DRAWN BY: EC
 DATE: 02.03.2018

PAPER SIZE: A1
 APPROVED BY: LA

DRAWING NUMBER: FS0316-ALA-00-XX-DR-L-0014
 SUITABILITY: S2
 REVISION: P06