

Chair's Review: Specific comments to address

Residential quality

- Suggest that other ground floor dwellings across the site could become dual-aspect as apartments on Manor Road
- Suggest apartments on Manor Road should have front doors onto the street rather than the courtyard



Chair's Review: Our response

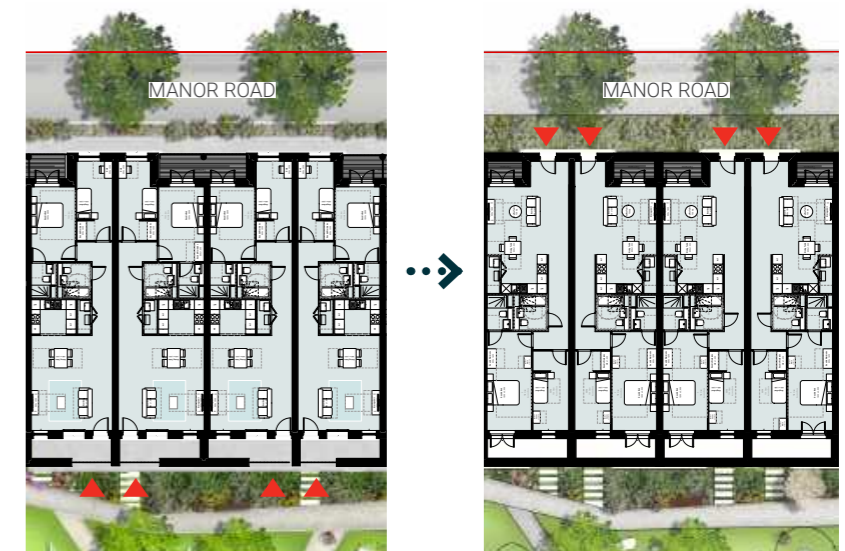
Residential quality

- Reviewed ground floor layout to assess potential locations for additional through dual aspect apartments.
- Dual-aspect apartments introduced on the ground floor of Buildings C and D



Locations for additional dual-aspect apartments assessed

- Entrances to dual-aspect apartments on Manor Road reviewed and apartment layouts altered to allow for entrances directly from Manor Road



Previous proposals for apartments to be accessed from the communal courtyard

Revised proposals for apartments to be accessed directly from Manor Road