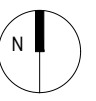


rev	details	by	date
D00	Issued for Planning	RJ	02.02.2018
D01	Issued for Planning	RJ	09.02.2018
D02	Update for Planning	RJ	25.03.2019
D03	Issued for Planning	RM	24.04.2020

Notes

- 1.0 All dimensions in millimeters.
- 1.2 Use only dimensions shown.



- Primary
- Secondary
- Tertiary
- Towpath
- Site Application Boundary
- School Application Boundary

© copyright GILLESPIES LLP, all rights reserved

Project
STAG BREWERY

Drawing
Proposed Site Wide Circulation Plan - Pedestrian

Date	Scale	Drawn	Checked
24.04.2020	1:2500 @ A3	CL	RM

Drawing status	Revision
DESIGN	D03

Drawing number
P10736-00-001-109

client
DARTMOUTH CAPITAL

Alameda House, 90-100 Sydney Street, London SW3 6NJ
P: xxxx xxx xxx

GILLESPIES

1 St John's Square, London EC1M 4DH
P: 0207 2532929 E: design.london@gillespies.co.uk