





rev	details	by	date
D01	Issued for Information	RJ	24.11.2017
D02	Issued for Planning	RJ	25.01.2018
D03	Issued for Planning	RJ	09.02.2018
D04	Issued for Planning	RM	24.04.2020

Notes

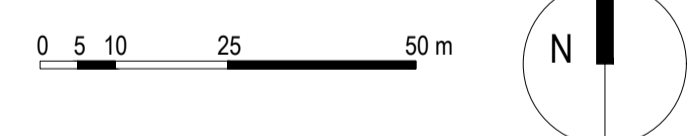
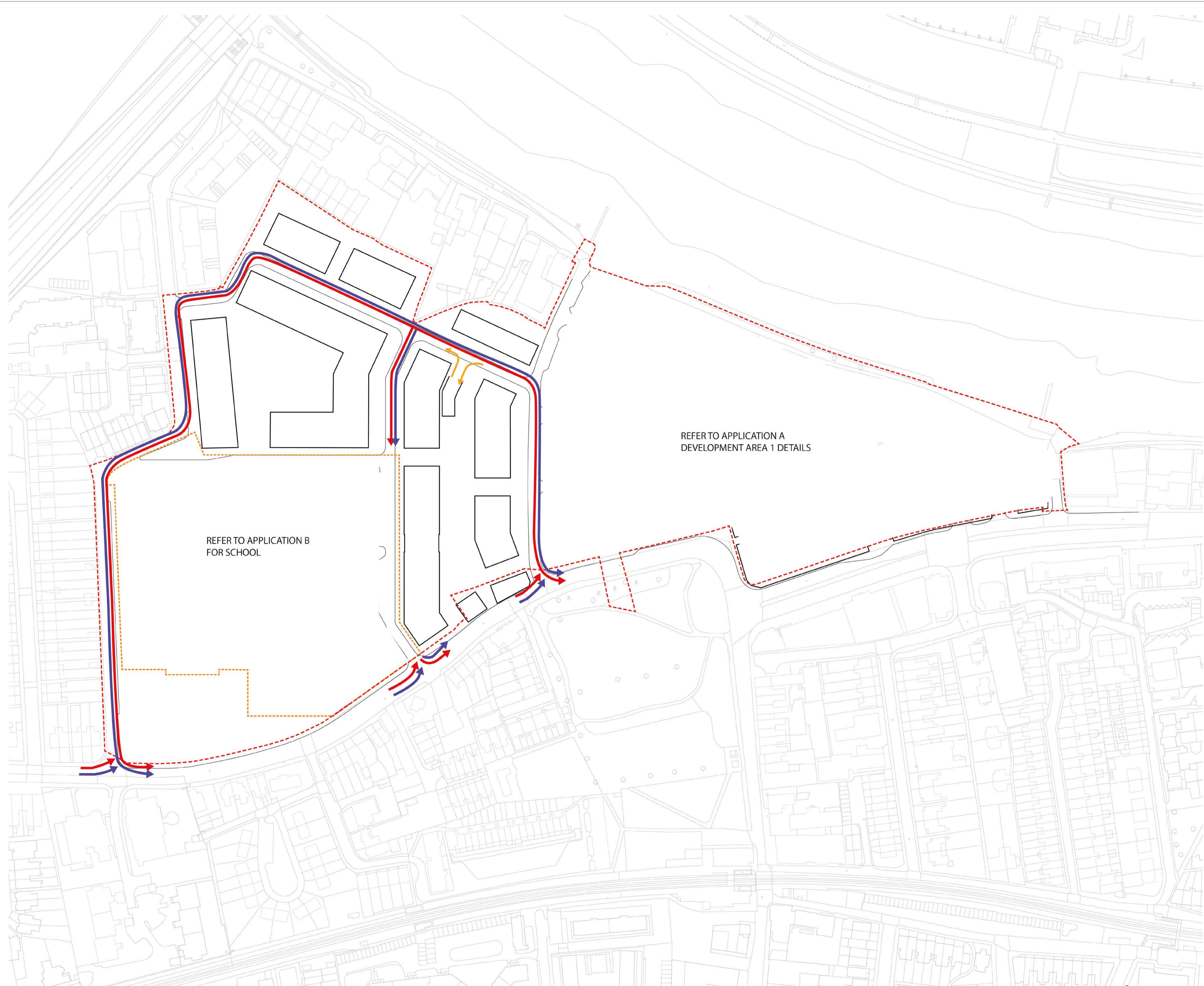
- 1.0 Do not scale from drawing, use figured dimensions only
- 1.1 All dimensions to be checked onsite
- 1.2 This drawing to be read in conjunction with all other Gillespies drawings and specifications

LEGEND

-  Fire Tender
-  Waste Collection
-  Passenger (Residential/Retail)
-  Site Application Boundary
-  School Application Boundary

Note:

- 1. In the event that building positions move within the limits of deviation set out in the parameter plans, the landscape zones will be adjusted to match any deviation from the current layout.
- 2. Please refer to Squires and Partners Drawing 16019_C645_Z2_P_PR_001_C, 002_C, 003_C, 004_C, 005_C and 013_C for building locations.



Project title
STAG BREWERY

Drawing title
Vehicular Circulation Parameter Plan

DESIGN	Drawing status	1:1000 @ A1	Scale	Drawn RM
	Date	24.04.2020	Date	Checked CL
P10736-00-001-124	Drawing number		Revision	D04
	Client	DARTMOUTH CAPITAL Alameda House, 90-100 Sydney Street, London SW3 9NJ P: 0207 626 0239		

