

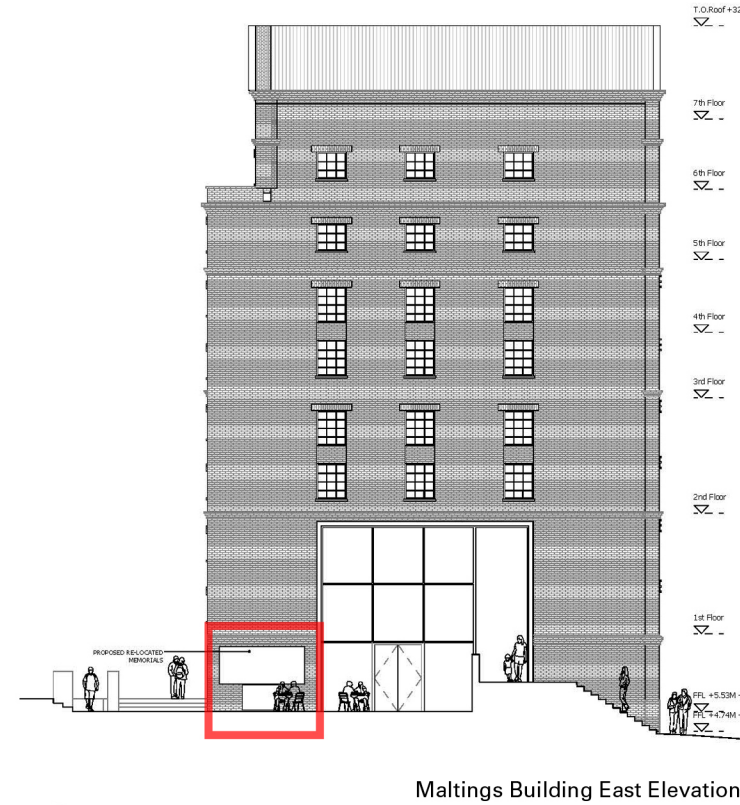
Other Heritage Assets

1. Memorial plaques + cast concrete Stag sign: relocation at the Maltings, Stag sign suggested for the High Street façade of the Bottling building, which would seem appropriate, although elsewhere, in the D+A S, it refers to repositioning by the Maltings.

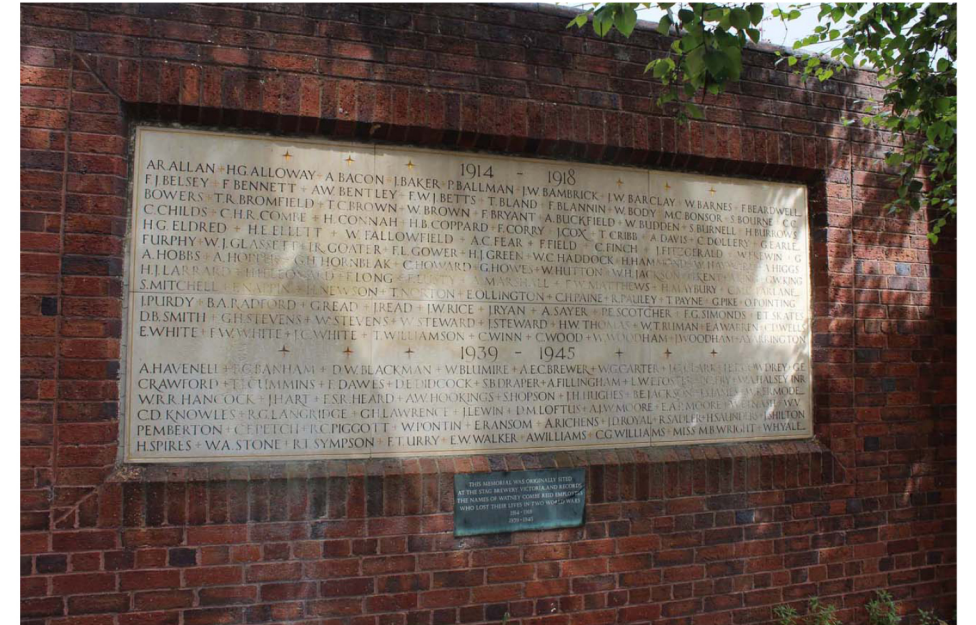
Memorial Plaques:

- A Memorial to Brewery workers who fell in WW1 and WW2
- B Memorial to two Brewery workers who died attempting to rescue a colleague

We propose the plaques be repositioned at the eastern end of the Maltings building – facing the café terrace and Maltings Plaza.



Location plan



A Existing memorial plaque - to fallen workers in World War 1 and 2 - be relocated within new development



B Existing memorial Plaque - to Brewery workers who lost their lives attempting to rescue a colleague

2. Gates: to be relocated, positions do not seem to have been determined yet.

The original proposal to relocate one pair of gates at the Rowing Club courtyard no longer works due to changes for flood control and levels / layout. The Watneys' Brewery gates from Williams Lane entry (refer image attached – 5.65m wide) is proposed opposite the end of Thames Street to terminate this view.

Stage Brewery Gate 1 is positioned on the edge of the site facing Mortlake Hight Street, adjacent to the pedestrian crossing and entry to the site between buildings 5 and 10.

Stage Brewery Gate 2 is proposed across the northern end of the Green Link, defining the separation between the soft landscape and hard paved Maltings Plaza.

