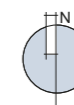
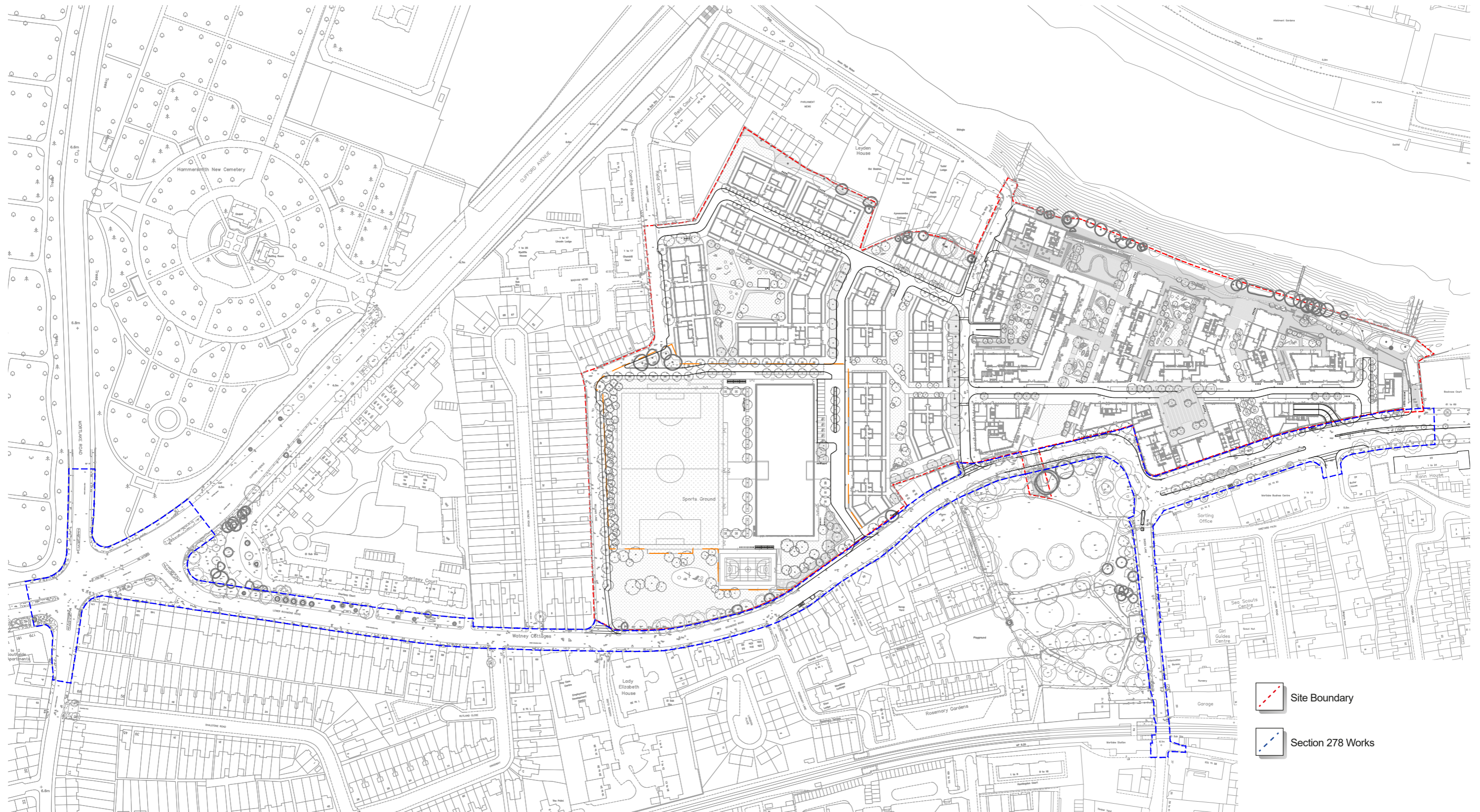

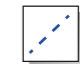


- Application A Boundary
- Application B Boundary
- Development Area 1
- Development Area 2

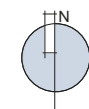


Project Details	WIE15582-100: Stag Brewery, Mortlake
Figure Title	Figure 1.2: Planning Application Boundaries (Applications A and B)
Figure Ref	WIE15582-100_GR_ESA_1.2A
Date	2020
File Location	\\h-incs\wiel\projects\wie15582\100\graphics\esa\issued figures



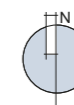
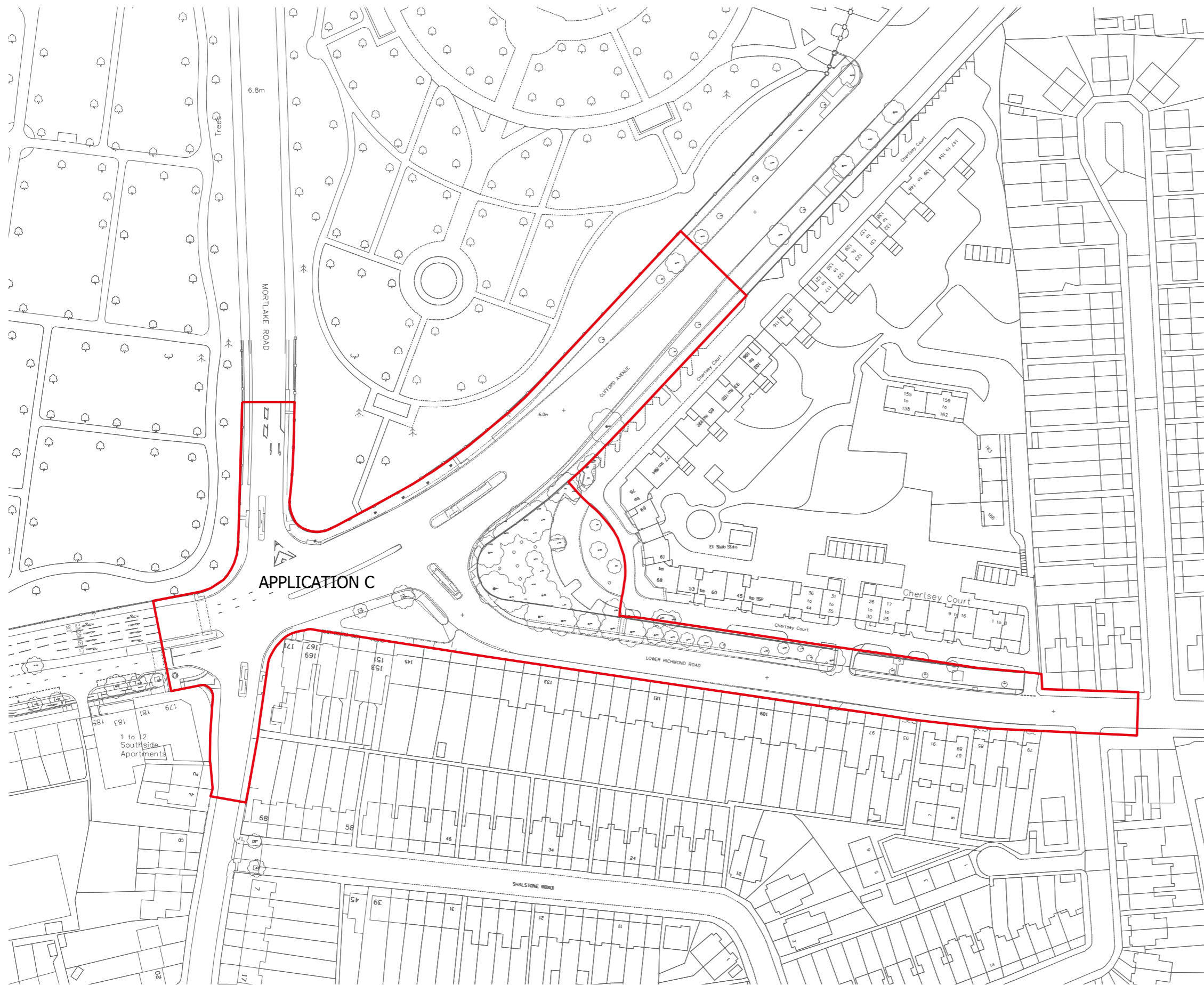
-  Site Boundary
-  Section 278 Works

Project Details	WIE15582-100: Stag Brewery, Mortlake
Figure Title	Figure 1.3: Extent of Section 278 Works
Figure Ref	WIE15582-100_GR_ESA_1.3B
Date	2020
File Location	\\h-inc\wiel\projects\wie15582100\graphics\esa\issued figures

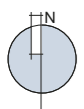
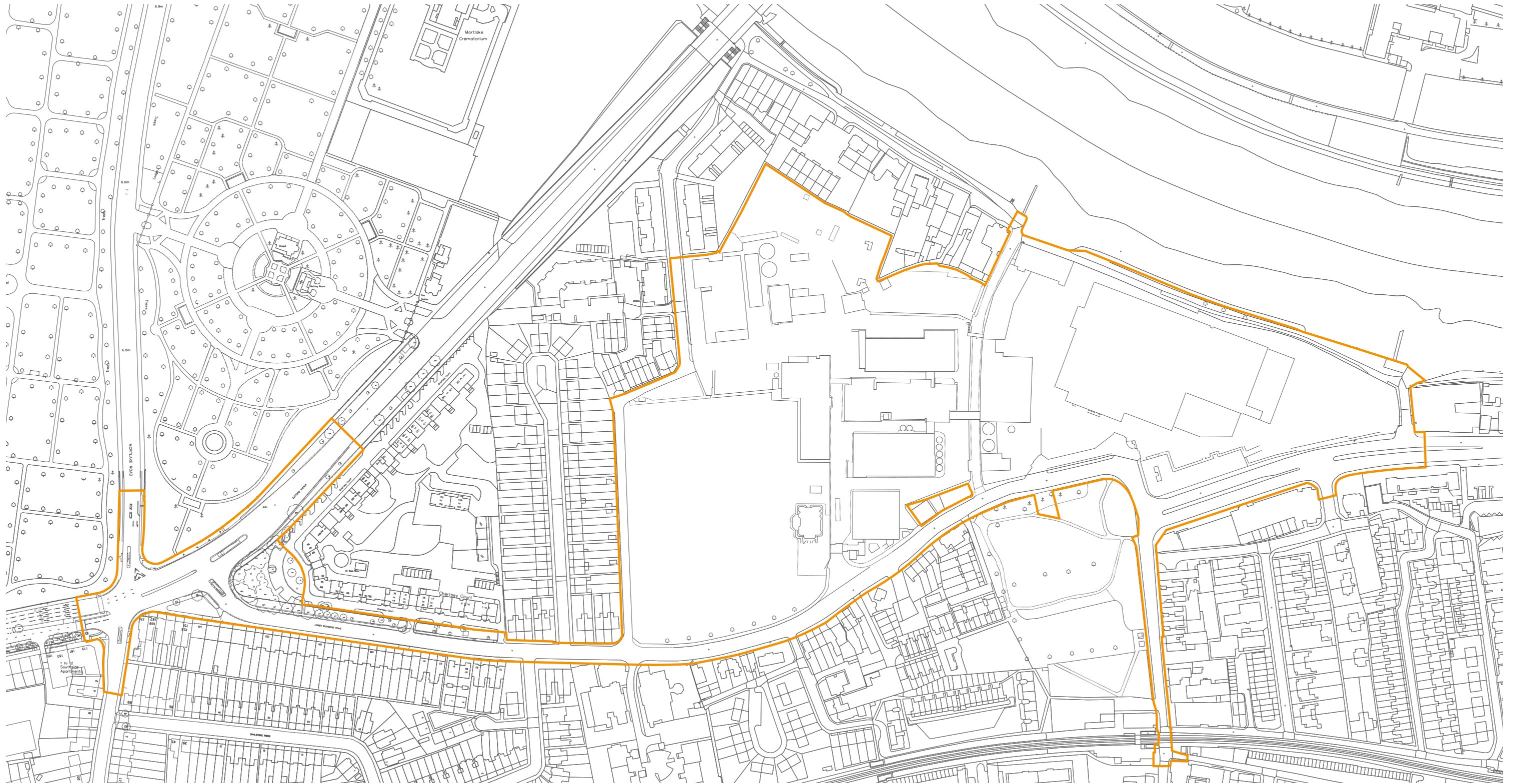


Source:Stantec

 Application C Boundary



Project Details	WIE15582-100: Stag Brewery, Mortlake
Figure Title	Figure 1.4: Planning Application Boundary C
Figure Ref	WIE15582-100_GR_ESA_1.4A
Date	2020
File Location	\\h-incs\wiel\projects\wie15582100\graphics\esa\issued figures



 Project Boundary

Project Details	WIE15582-100: Stag Brewery, Mortlake
Figure Title	Figure 1.5: Project Boundary
Figure Ref	WIE15582-100_GR_ESA_1.5A
Date	2020
File Location	\\h-incs\wiel\projects\wie15582100\graphics\esa\issued figures