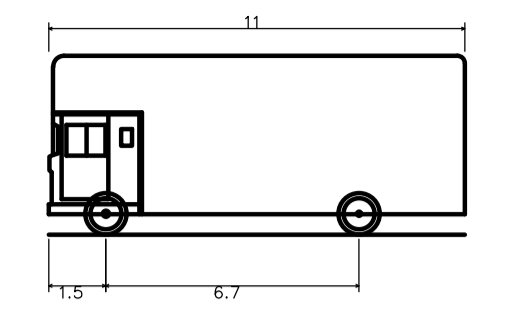
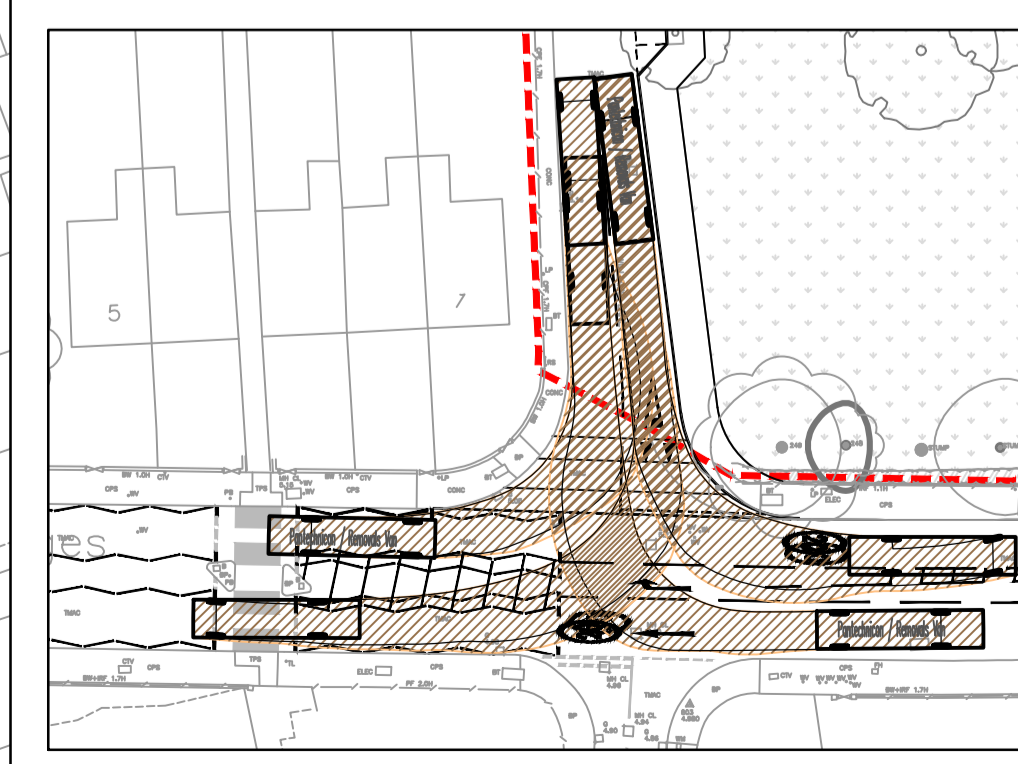
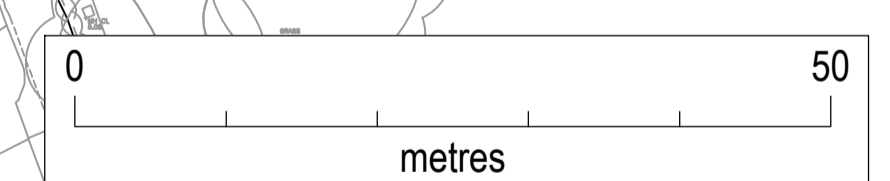


Pantechon / Removals Van



Pantechon / Removals Van  
 Overall Length 11.000m  
 Overall Width 2.500m  
 Overall Body Height 4.730m  
 Min Body Ground Clearance 0.541m  
 Track Width 2.500m  
 Lock to lock time 6.00s  
 Kerb to Kerb Turning Radius 12.200m



WILLIAMS LANE / LOWER RICHMOND ROAD JUNCTION

Mark	Revision	Date	Drawn	Chkd	Appd

UTILITIES NOTE: The position of any existing public or private sewers, utility services, plant or apparatus shown on this drawing is believed to be correct, but no warranty to this is expressed or implied. Other such plant or apparatus may also be present but not shown. The Contractor is therefore advised to undertake their own investigation where the presence of any existing sewers, services, plant or apparatus may affect their operations.

Drawing Issue Status **FOR PLANNING**

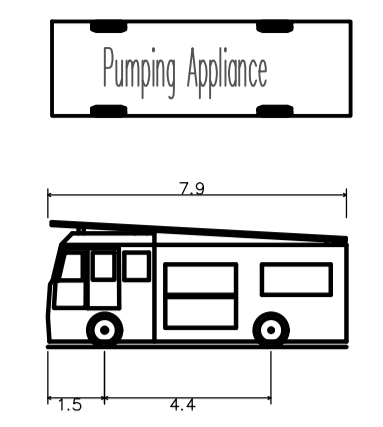
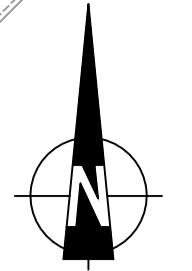
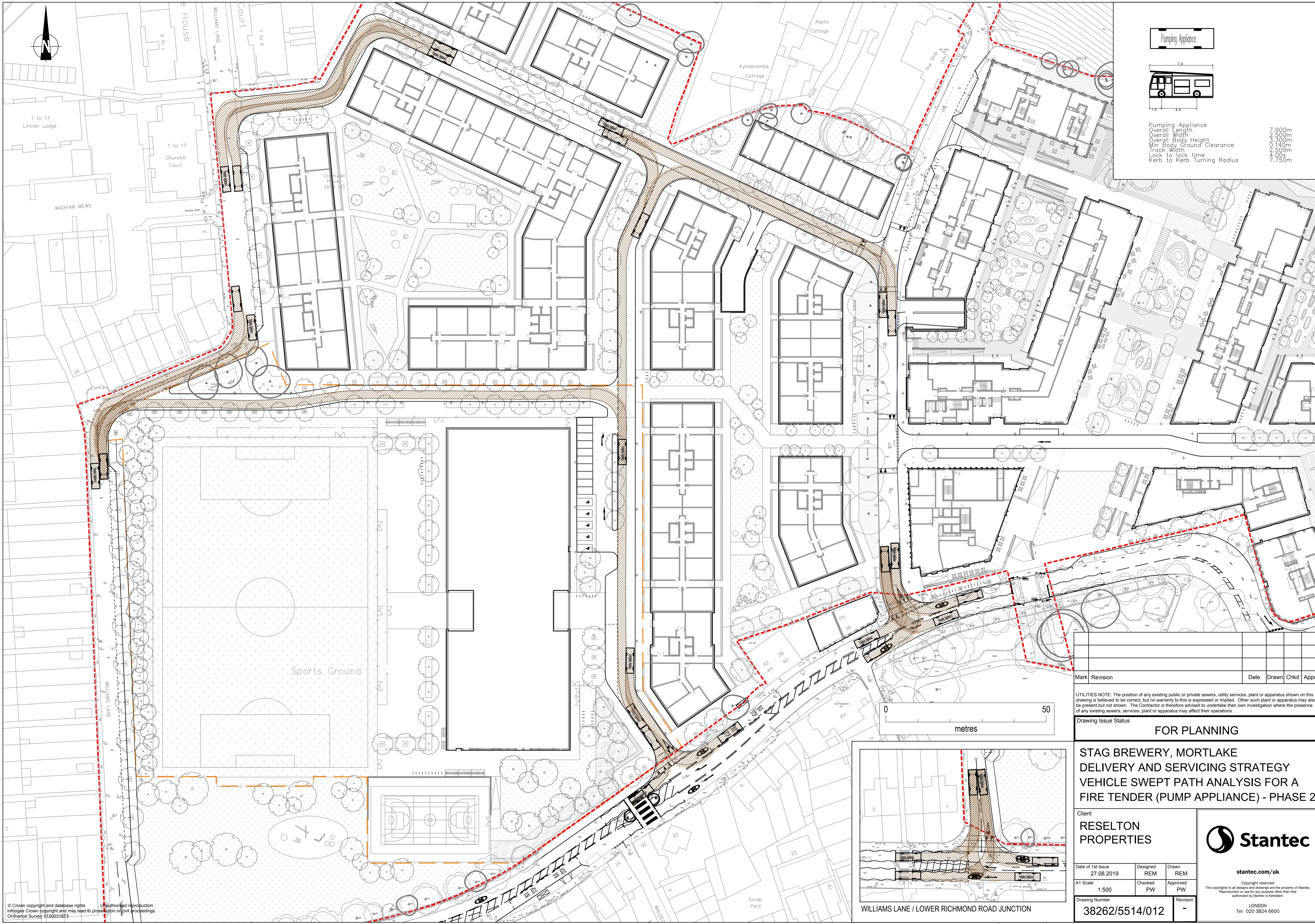
**STAG BREWERY, MORTLAKE  
 DELIVERY AND SERVICING STRATEGY  
 VEHICLE SWEEP PATH ANALYSIS FOR A  
 PANTECHNICON (REMOVALS LORRY) - PHASE 2**

Client  
**RESELTON  
 PROPERTIES**

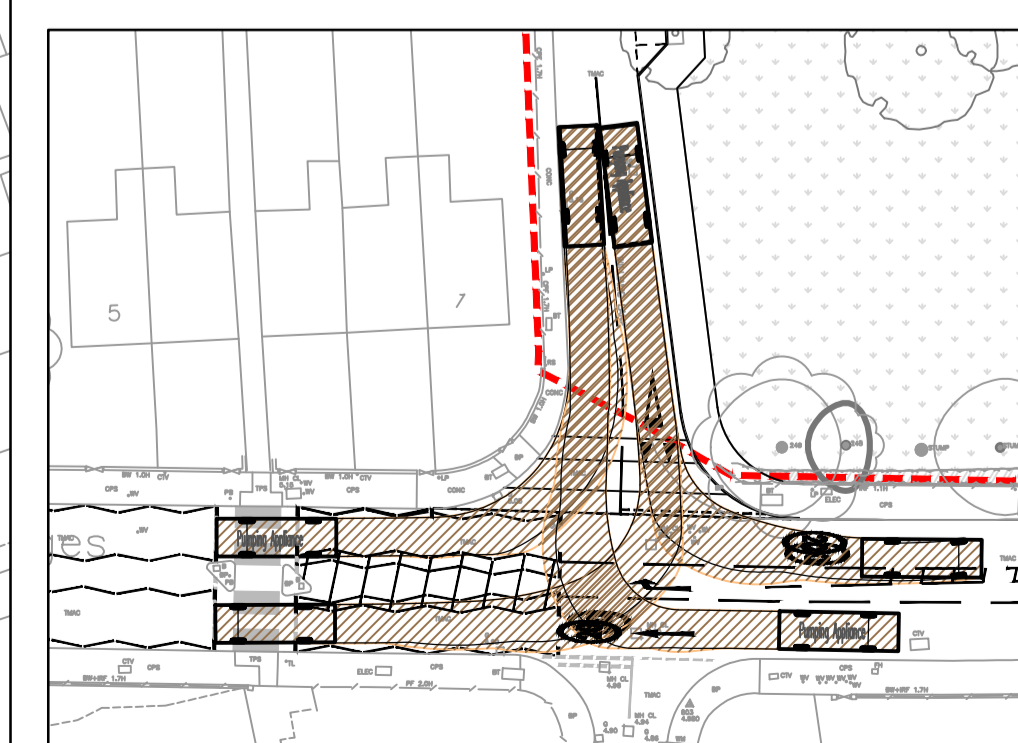
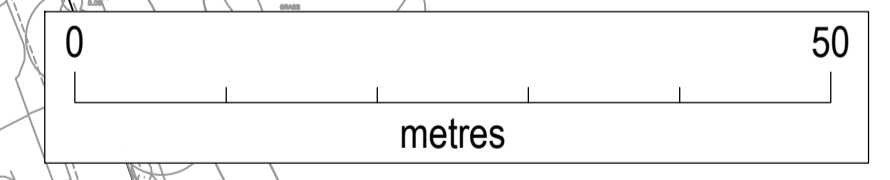


Date of 1st Issue 08.04.2020	Designed REM	Drawn REM
A1 Scale 1:500	Checked PW	Approved PW
Drawing Number 38262/5514/011	Revision -	

stantec.com/uk  
 Copyright reserved  
 The reproduction of all designs and drawings are the property of Stantec.  
 Reproduction or use for any purpose other than that authorised by Stantec is forbidden.  
 LONDON  
 Tel: 020 3824 6600



Pumping Appliance  
 Overall Length 7.900m  
 Overall Width 2.500m  
 Overall Body Height 3.300m  
 Min Body Ground Clearance 0.140m  
 Track Width 2.500m  
 Lock to lock time 4.00s  
 Kerb to Kerb Turning Radius 7.750m



WILLIAMS LANE / LOWER RICHMOND ROAD JUNCTION

Mark	Revision	Date	Drawn	Chkd	Appd

UTILITIES NOTE: The position of any existing public or private sewers, utility services, plant or apparatus shown on this drawing is believed to be correct, but no warranty to this is expressed or implied. Other such plant or apparatus may also be present but not shown. The Contractor is therefore advised to undertake their own investigation where the presence of any existing sewers, services, plant or apparatus may affect their operations.

Drawing Issue Status **FOR PLANNING**

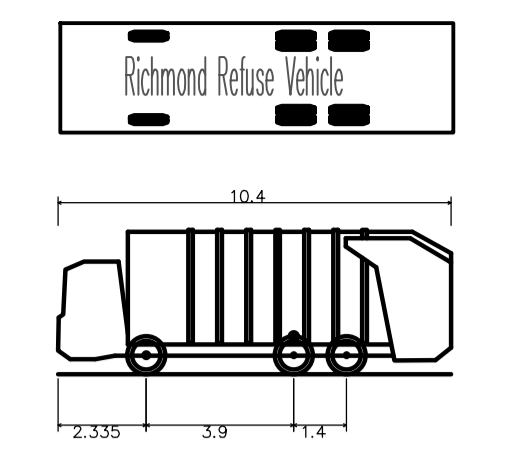
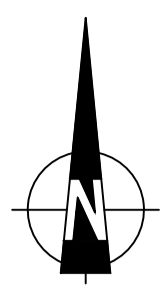
**STAG BREWERY, MORTLAKE  
 DELIVERY AND SERVICING STRATEGY  
 VEHICLE SWEEP PATH ANALYSIS FOR A  
 FIRE TENDER (PUMP APPLIANCE) - PHASE 2**

Client  
**RESELTON  
 PROPERTIES**

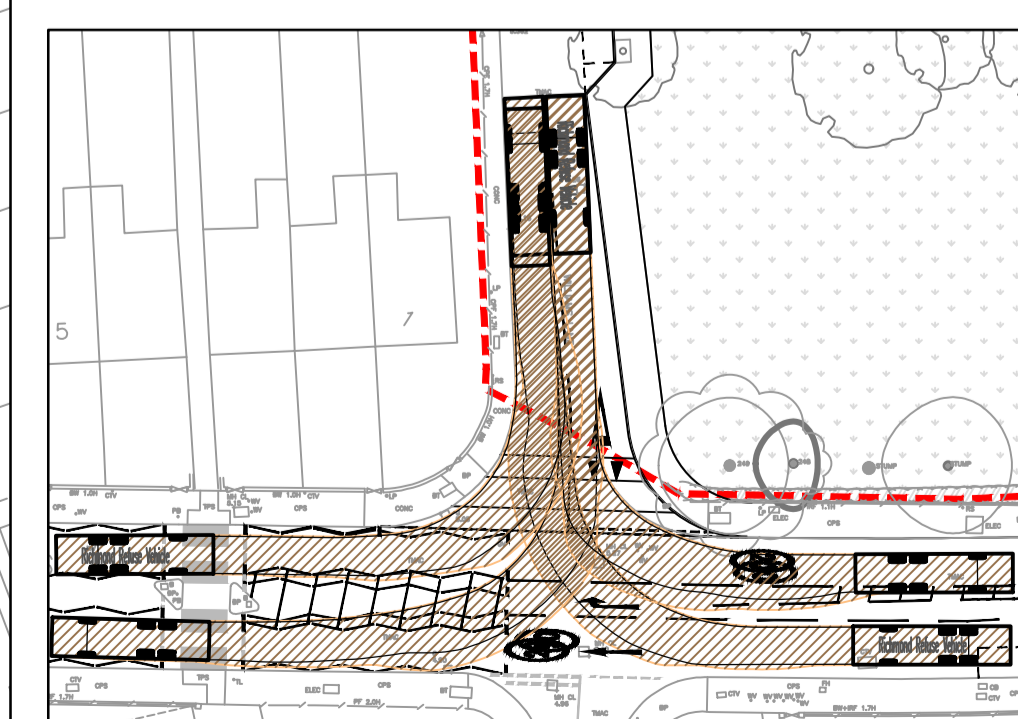
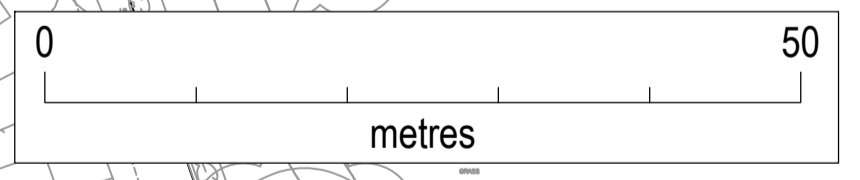
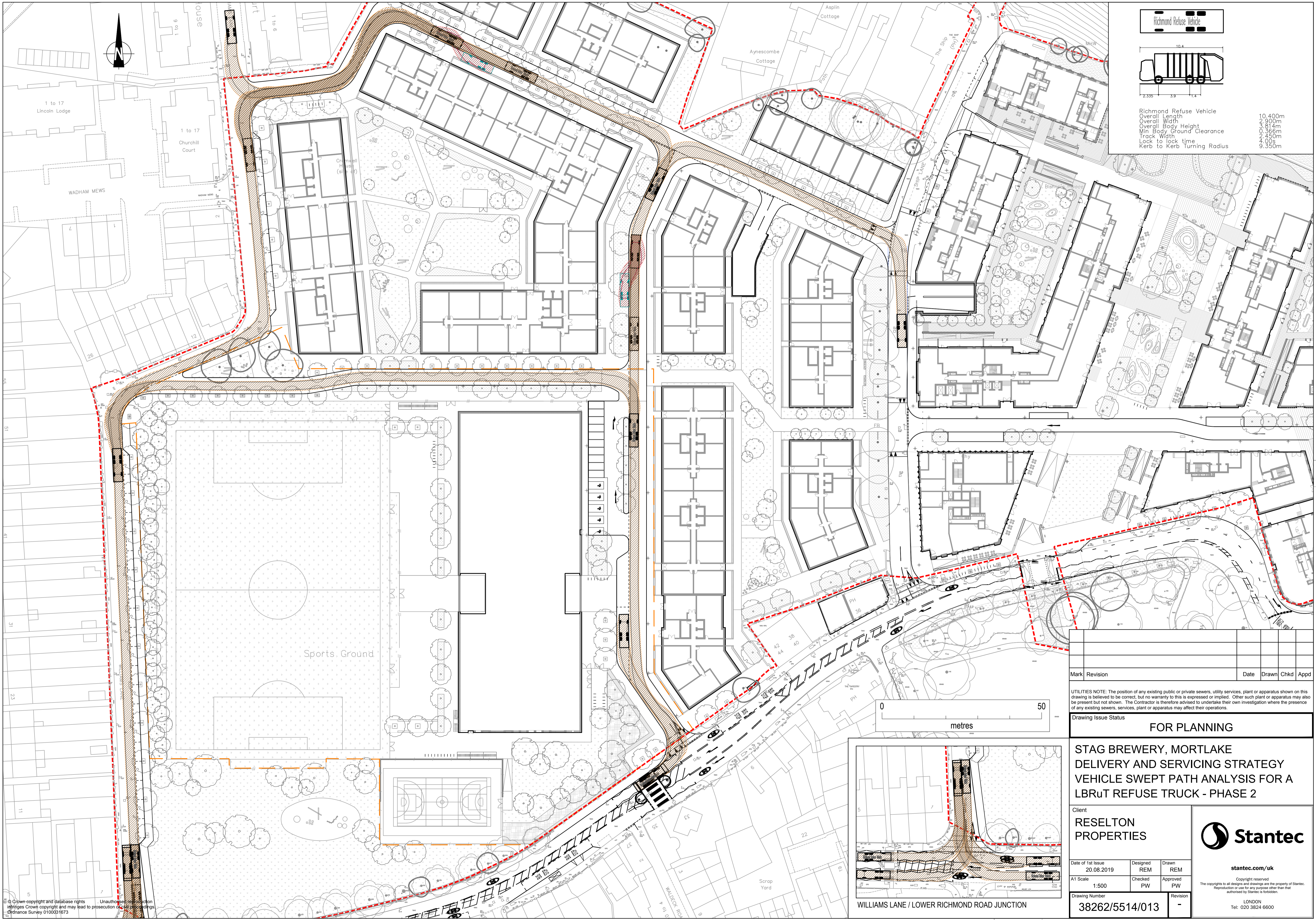
Date of 1st Issue 27.08.2019	Designed REM	Drawn REM
A1 Scale 1:500	Checked PW	Approved PW
Drawing Number 38262/5514/012	Revision -	



stantec.com/uk  
 Copyright reserved  
 The reproduction or use for any purpose other than that authorised by Stantec is forbidden.  
 LONDON  
 Tel: 020 3824 6600



Richmond Refuse Vehicle  
 Overall Length 10.400m  
 Overall Width 2.900m  
 Overall Body Height 3.814m  
 Min Body Ground Clearance 0.366m  
 Track Width 2.450m  
 Lock to lock time 4.00s  
 Kerb to Kerb Turning Radius 9.350m



WILLIAMS LANE / LOWER RICHMOND ROAD JUNCTION

Mark	Revision	Date	Drawn	Chkd	Appd

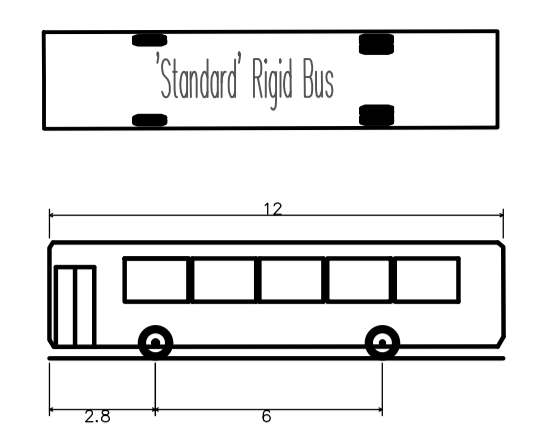
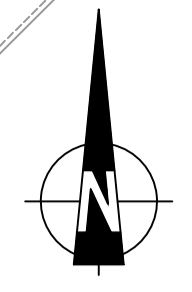
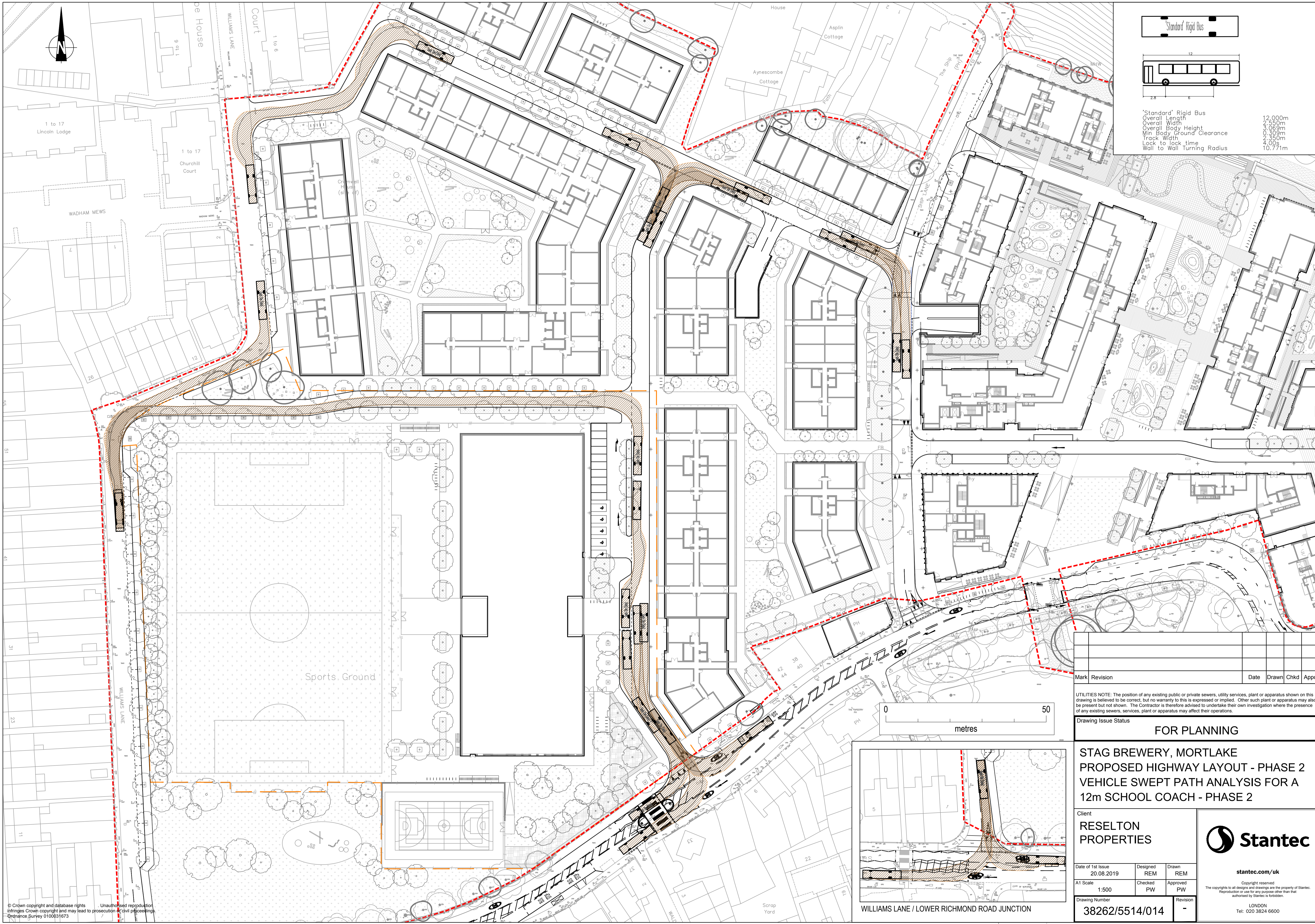
UTILITIES NOTE: The position of any existing public or private sewers, utility services, plant or apparatus shown on this drawing is believed to be correct, but no warranty to this is expressed or implied. Other such plant or apparatus may also be present but not shown. The Contractor is therefore advised to undertake their own investigation where the presence of any existing sewers, services, plant or apparatus may affect their operations.

Drawing Issue Status **FOR PLANNING**

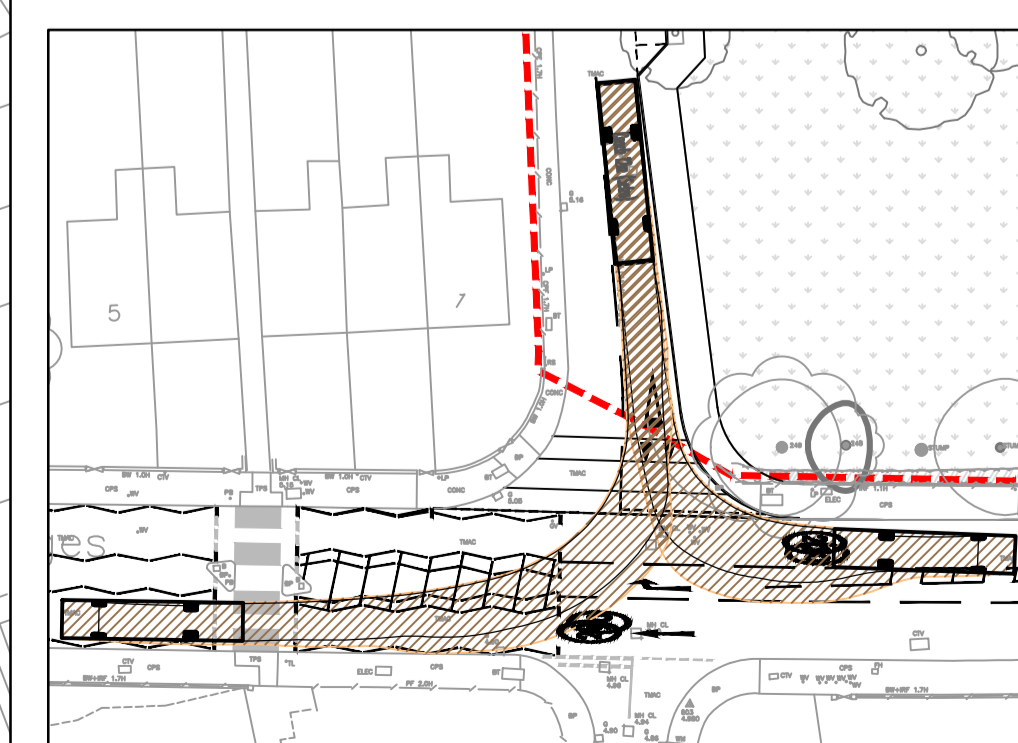
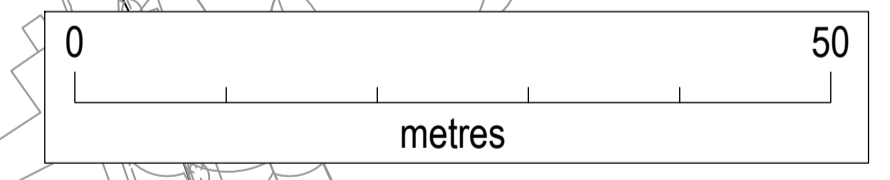
### STAG BREWERY, MORTLAKE DELIVERY AND SERVICING STRATEGY VEHICLE SWEEP PATH ANALYSIS FOR A LBRuT REFUSE TRUCK - PHASE 2

Client <b>RESELTON PROPERTIES</b>			
Date of 1st Issue 20.08.2019	Designed REM	Drawn REM	
A1 Scale 1:500	Checked PW	Approved PW	<p>stantec.com/uk</p> <p>Copyright reserved        The copyrights to all designs and drawings are the property of Stantec. Reproduction or use for any purpose other than that authorised by Stantec is forbidden.</p> <p>LONDON        Tel: 020 3824 6600</p>
Drawing Number <b>38262/5514/013</b>	Revision -		

© Crown copyright and database rights. Unauthorised reproduction infringes Crown copyright and may lead to prosecution or civil proceedings. Ordnance Survey 0100031673



'Standard' Rigid Bus  
 Overall Length 12.000m  
 Overall Width 2.550m  
 Overall Body Height 3.069m  
 Min Body Ground Clearance 0.309m  
 Track Width 2.550m  
 Lock to lock time 4.00s  
 Wall to Wall Turning Radius 10.771m



WILLIAMS LANE / LOWER RICHMOND ROAD JUNCTION

Mark	Revision	Date	Drawn	Chkd	Appd

UTILITIES NOTE: The position of any existing public or private sewers, utility services, plant or apparatus shown on this drawing is believed to be correct, but no warranty to this is expressed or implied. Other such plant or apparatus may also be present but not shown. The Contractor is therefore advised to undertake their own investigation where the presence of any existing sewers, services, plant or apparatus may affect their operations.

Drawing Issue Status **FOR PLANNING**

**STAG BREWERY, MORTLAKE  
 PROPOSED HIGHWAY LAYOUT - PHASE 2  
 VEHICLE SWEEP PATH ANALYSIS FOR A  
 12m SCHOOL COACH - PHASE 2**

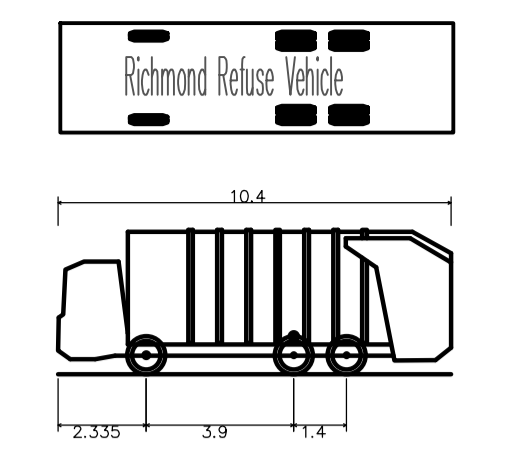
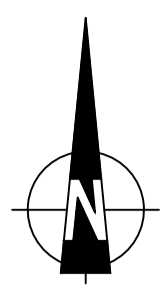
Client  
**RESELTON  
 PROPERTIES**

Date of 1st Issue 20.08.2019	Designed REM	Drawn REM
A1 Scale 1:500	Checked PW	Approved PW
Drawing Number 38262/5514/014	Revision -	

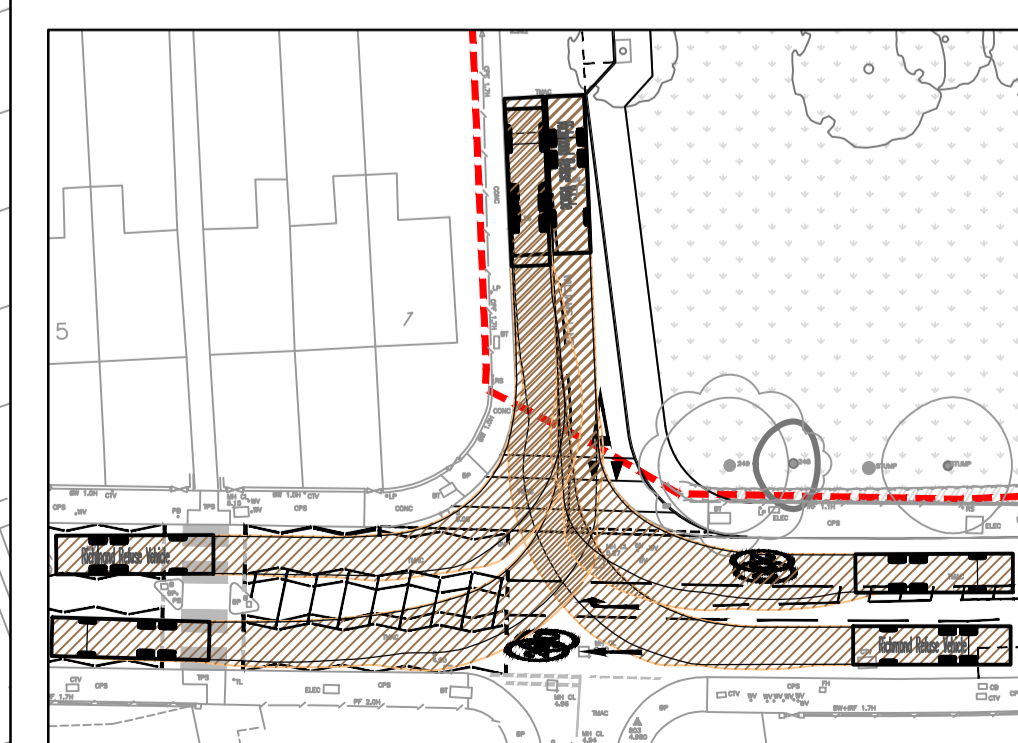
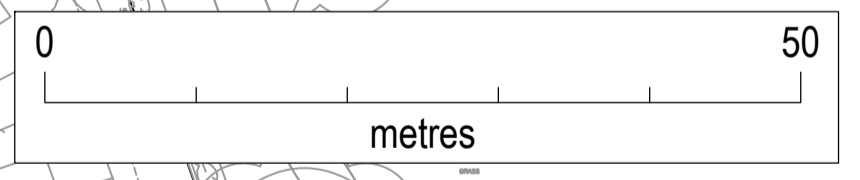
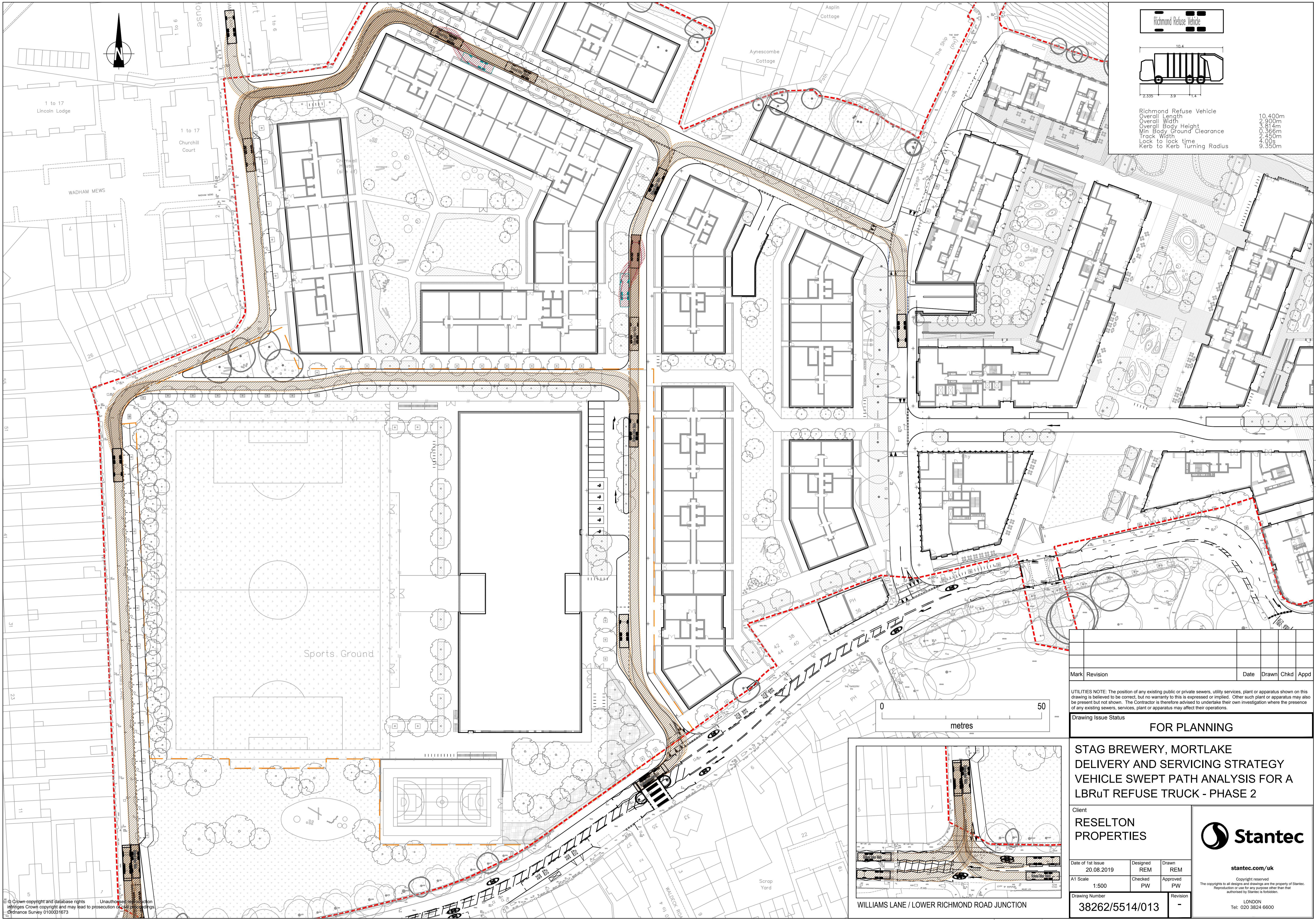


stantec.com/uk  
 Copyright reserved  
 The copyrights to all designs and drawings are the property of Stantec.  
 Reproduction or use for any purpose other than that  
 authorised by Stantec is forbidden.  
 LONDON  
 Tel: 020 3824 6600

# Appendix D School Waste Collection Tracking



Richmond Refuse Vehicle  
 Overall Length 10.400m  
 Overall Width 2.900m  
 Overall Body Height 3.814m  
 Min Body Ground Clearance 0.366m  
 Track Width 2.450m  
 Lock to lock time 4.00s  
 Kerb to Kerb Turning Radius 9.350m



Mark	Revision	Date	Drawn	Chkd	Appd

UTILITIES NOTE: The position of any existing public or private sewers, utility services, plant or apparatus shown on this drawing is believed to be correct, but no warranty to this is expressed or implied. Other such plant or apparatus may also be present but not shown. The Contractor is therefore advised to undertake their own investigation where the presence of any existing sewers, services, plant or apparatus may affect their operations.

Drawing Issue Status **FOR PLANNING**

### STAG BREWERY, MORTLAKE DELIVERY AND SERVICING STRATEGY VEHICLE SWEEP PATH ANALYSIS FOR A LBRuT REFUSE TRUCK - PHASE 2

Client <b>RESELTON PROPERTIES</b>			
Date of 1st Issue 20.08.2019	Designed REM	Drawn REM	
A1 Scale 1:500	Checked PW	Approved PW	<a href="http://stantec.com/uk">stantec.com/uk</a> <small>Copyright reserved        The copyrights to all designs and drawings are the property of Stantec.        Reproduction or use for any purpose other than that        authorised by Stantec is forbidden.</small>
Drawing Number <b>38262/5514/013</b>	Revision -		
LONDON Tel: 020 3824 6600			

© Crown copyright and database rights. Unauthorised reproduction infringes Crown copyright and may lead to prosecution or civil proceedings. Ordnance Survey 0100031673