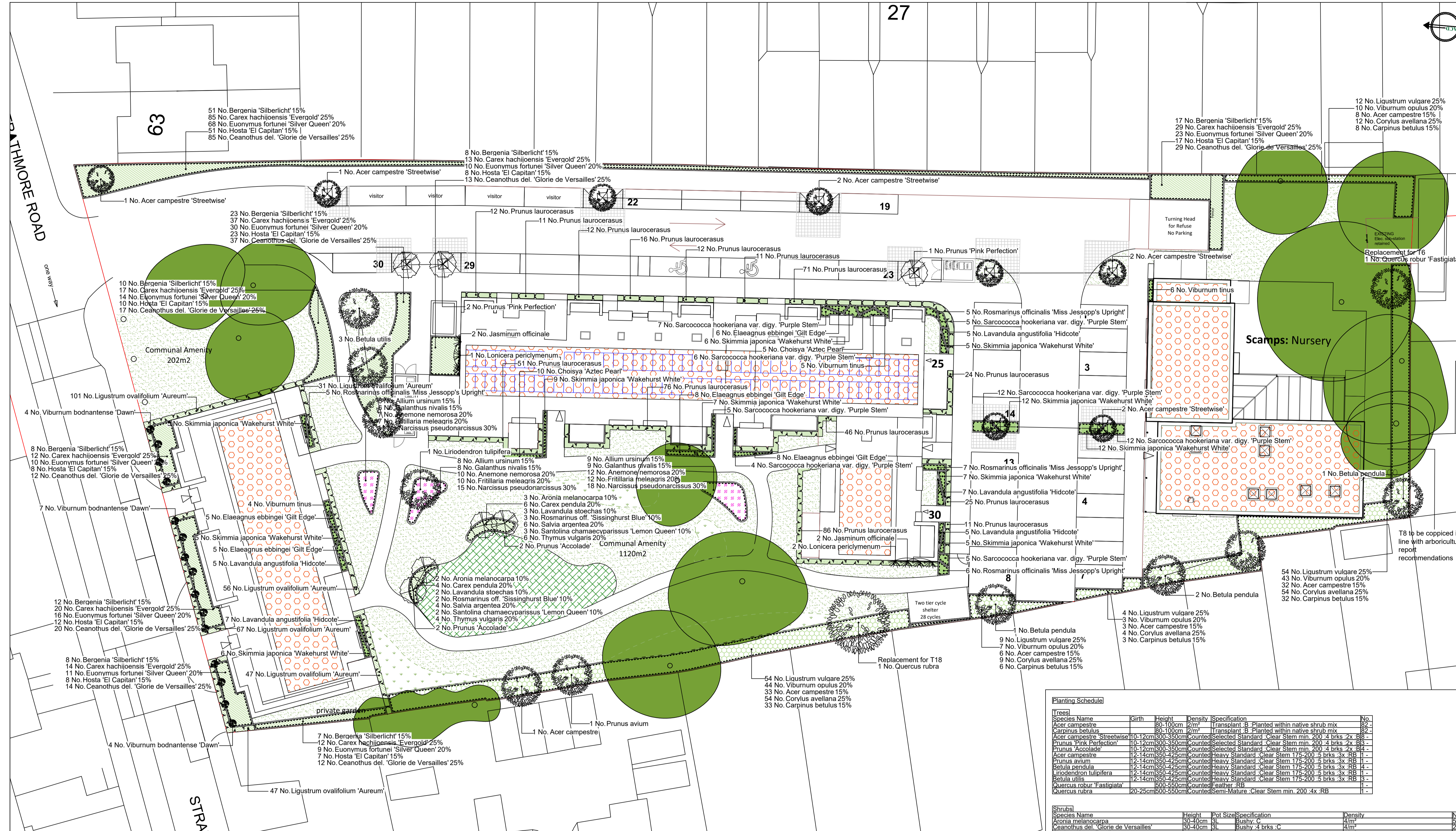


**SPECIFICATION**  
All works generally, to comply with the written Soft Landscape Specification.  
**NOTES:**  
DO NOT SCALE FROM DRAWING  
NOT FOR CONSTRUCTION, FOR PLANNING PURPOSES ONLY

**Legend**

- Existing trees to be retained and protected during construction
- Proposed structural tree planting within soft landscape. See tree pit detail A
- Proposed tree planting to include tree guards. See tree pit detail B
- Proposed decorative tree planting within soft landscape. See tree pit detail A
- Proposed decorative tree planting within soft landscape. See tree pit detail B
- Proposed specimen shrub planting to receive short angular staking on half standards with expandable tree ties. Irrigation tubing to root system of Viburnum specimens as required
- Proposed climbing plants to be trained up adjacent wall/fence/pergola with galvanised wires and hook set 250mm apart with support canes removed prior to planting
- Proposed hedge planting to be planted in a single row at 300mm centres
- Proposed hedge planting to be planted in a single row at 300mm centres, to be maintained to a height of 400mm
- Proposed shrub planting to receive 75mm bark mulch after planting operations
- Proposed decorative mix shrub planting to be planted in groups of 5-7no. of each species and as above
- Proposed native shrub mix to be planted in groups of 5-7no. of each species and as above
- Proposed bulb planting, to be planted in Autumn at three times the depth of the bulb, in groups of 10no. of each species
- Proposed grass areas to receive good quality amenity grass turves laid in line with good horticultural practices
- Proposed areas to be seeded with EM2 Standard General Purpose Meadow Mixture as supplied by Emorsgate Seeds and sown at 4 grams per msq, or similar
- Proposed green roofs to be Wildflower Blanket, as supplied by Sky Garden or similar
- Proposed grass matts. To be laid inline with suppliers recommendations, BS EN1176 and BS EN1177 and critical fall heights



**Planting Schedule**

Species Name	Girth	Height	Density	Specification	No.
Acer campestre	80-100cm	2/m	Transplant B	Planted within native shrub mix	82
Carpinus betulus	80-100cm	2/m	Transplant B	Planted within native shrub mix	82
Acer campestre 'Streetwise'	10-12cm	300-350cm	Counted	Selected Standard, Clear Stem min. 200.4 brks. 2x B4	18
Prunus 'Pink Perfection'	10-12cm	300-350cm	Counted	Selected Standard, Clear Stem min. 200.4 brks. 2x B4	18
Prunus 'Accolade'	10-12cm	300-350cm	Counted	Selected Standard, Clear Stem min. 200.4 brks. 2x B4	18
Acer campestre	12-14cm	350-425cm	Counted	Heavy Standard, Clear Stem 175-200.5 brks. 3x RB	11
Prunus avium	12-14cm	350-425cm	Counted	Heavy Standard, Clear Stem 175-200.5 brks. 3x RB	11
Betula pendula	12-14cm	350-425cm	Counted	Heavy Standard, Clear Stem 175-200.5 brks. 3x RB	11
Liriodendron tulipifera	12-14cm	350-425cm	Counted	Heavy Standard, Clear Stem 175-200.5 brks. 3x RB	11
Betula utilis	12-14cm	350-425cm	Counted	Heavy Standard, Clear Stem 175-200.5 brks. 3x RB	11
Quercus robur 'Fastigiata'	600-550cm	Counted	Feather RB	1	
Quercus rubra	20-25cm/500-550cm	Counted	Semi-Mature, Clear Stem min. 200.4x RB	1	

**Shrubs**

Species Name	Height	Pot Size	Specification	Density	No.
Aronia melanocarpa	30-40cm	3l	Bushy C	4/m <sup>2</sup>	5
Ceanothus del. 'Glorie de Versailles'	30-40cm	3l	Bushy 4 brks C	4/m <sup>2</sup>	239
Choisya Aztec Pearl	30-40cm	3l	Bushy C	4/m <sup>2</sup>	15
Corvulus avellana	60-80cm	3l	Bushy BR Planted in native shrub mix/2/m <sup>2</sup>	133	
Elaeagnus ebbingei 'Gilt Edge'	40-60cm	3l	Branched 3 brks C	4/m <sup>2</sup>	82
Euonymus fortunei 'Silver Queen'	30-40cm	3l	Bushy 7 brks C	4/m <sup>2</sup>	191
Lavandula angustifolia 'Hidcote'	30-40cm	5-7.5l	Bushy C	4/m <sup>2</sup>	25
Lavandula stoechas	30-40cm	3l	Bushy C	4/m <sup>2</sup>	5
Ligustrum ovalifolium 'Aureum'	40-60cm	10l	Bushy C Plant and maintain as hedge/0.5Cr Double Slaggered at 0.3m offset	349	
Ligustrum vulgare	60-80cm	3l	Bushy BR Planted in native shrub mix/2/m <sup>2</sup>	133	
Prunus laurocerasus	60-80cm	5-7.5l	Bushy C Plant and maintain as hedge/0.3Cr	464	
Rosmarinus off. 'Sissinghurst Blue'	30-40cm	3l	Bushy C	4/m <sup>2</sup>	5
Rosmarinus officinalis 'Miss Jessopp's Upright'	40-60cm	3l	Bushy C	4/m <sup>2</sup>	23
Santolina chamaecyparissus 'Lemon Queen'	30-40cm	3l	Branched 3 brks C	4/m <sup>2</sup>	5
Sarcococca hookeriana var. digy. 'Purple Stem'	30-40cm	3l	Bushy C	4/m <sup>2</sup>	56
Skimmia japonica 'Wakehurst White'	30-40cm	3l	Bushy C	4/m <sup>2</sup>	74
Viburnum bodnantense 'Dawn'	80-100cm/10l	Branched 4 brks C	Counted	15	
Viburnum opulus	60-80cm	3l	Bushy BR Planted in native shrub mix/2/m <sup>2</sup>	107	
Viburnum tinus	30-40cm	3l	Bushy C	4/m <sup>2</sup>	15

**Climbers**

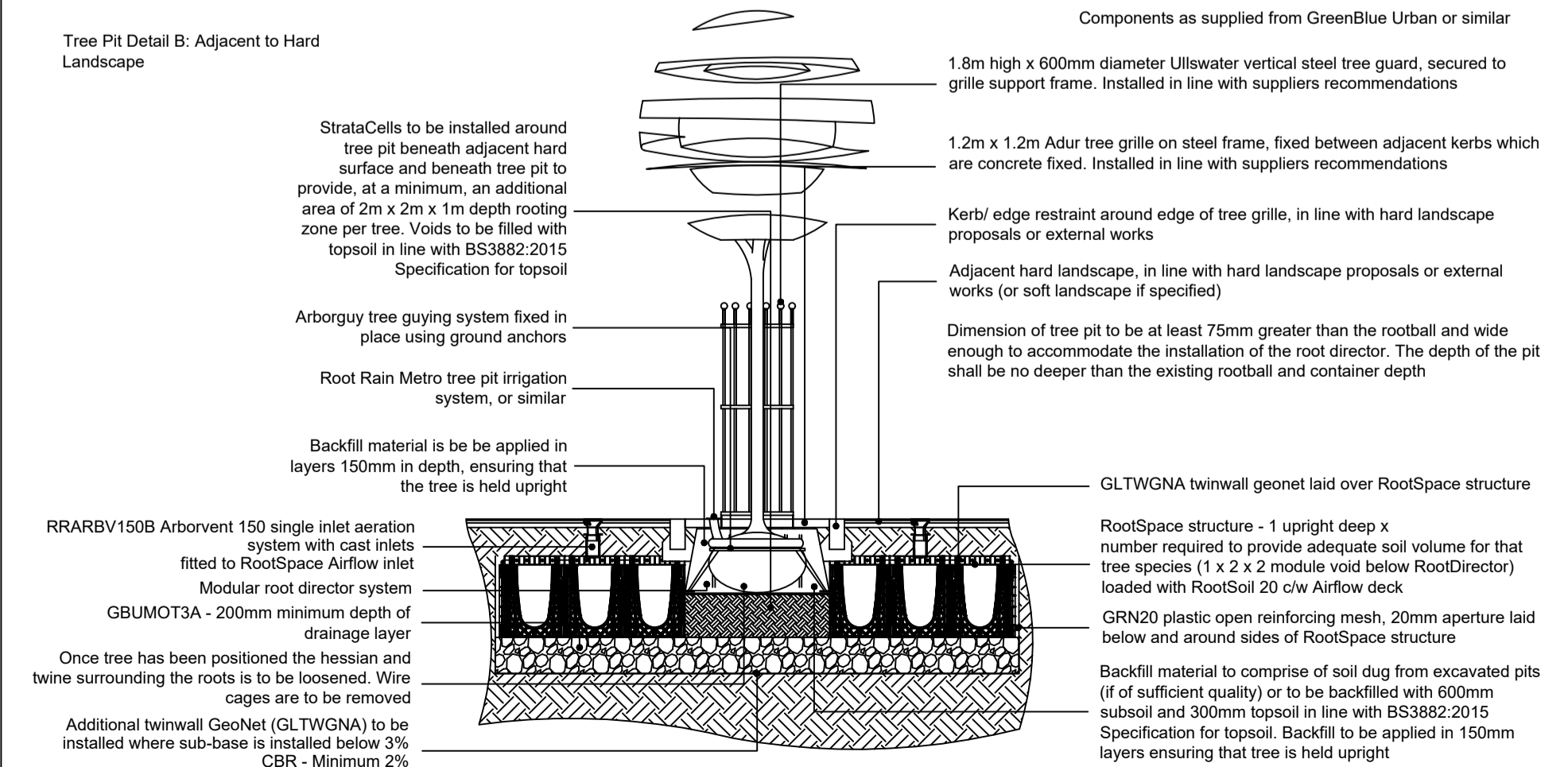
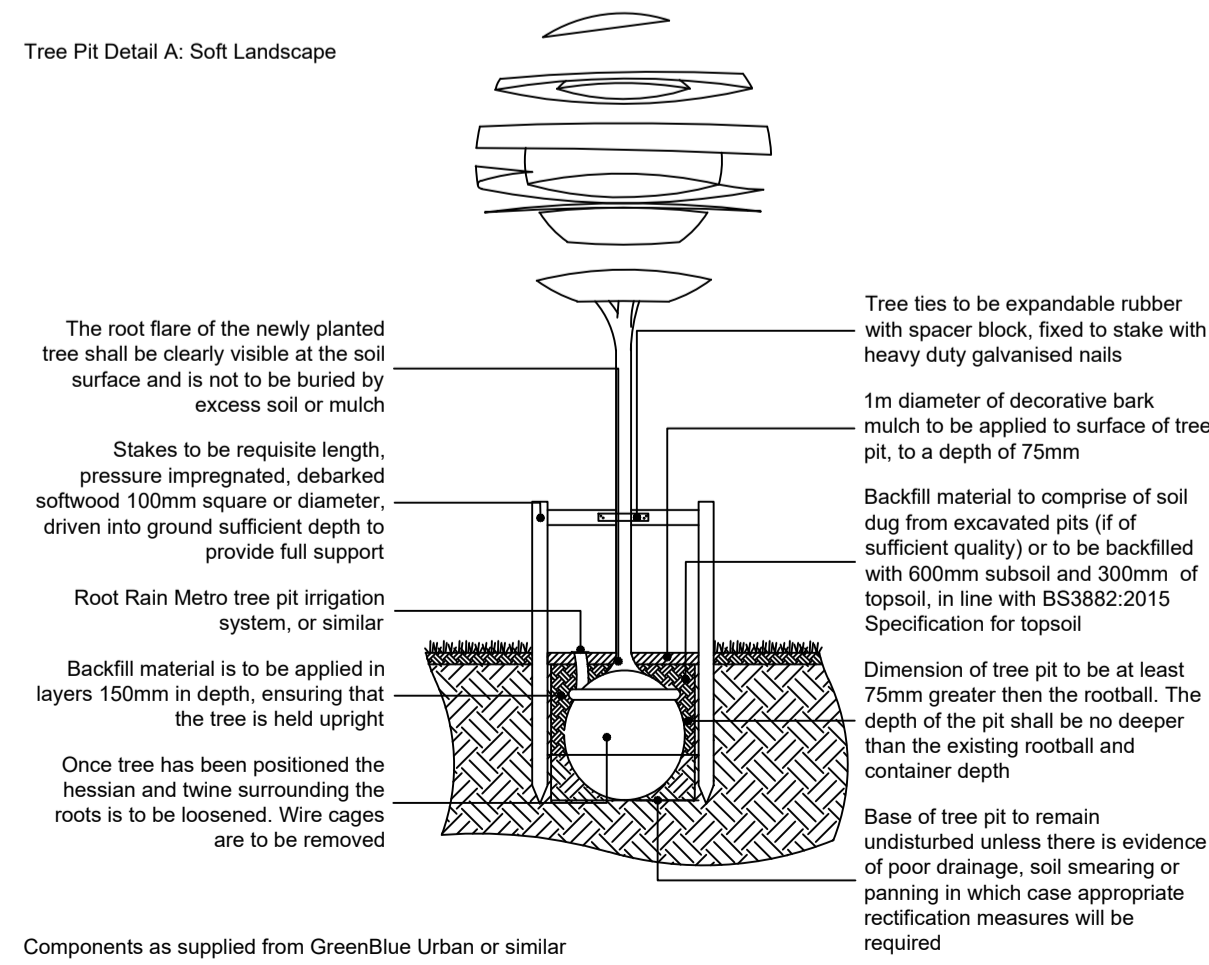
Species Name	Height	Pot Size	Specification	Density	No.
Jasminum officinale	80-100cm/3l	Several Shoots 3/4 brks C	Counted	4	
Lonicera periclymenum/80-100cm/3l	Several Shoots 3/4 brks C	Counted	3		

**Herbaceous**

Species Name	Height	Pot Size	Specification	Density	No.
Bergenia 'Silberlicht'	3l	C	4/m <sup>2</sup>	144	
Carex hachioensis 'Evergold'	3l	C	4/m <sup>2</sup>	239	
Carex pendula	3l	C	4/m <sup>2</sup>	10	
Hosta 'El Capitan'	3l	C	4/m <sup>2</sup>	144	
Salvia argentea	3l	C	4/m <sup>2</sup>	10	
Thymus vulgaris	3l	C	4/m <sup>2</sup>	10	

**Bulbs**

Species Name	Specification	Density	No.
Allium ursinum	5/m <sup>2</sup>	23	
Anemone nemorosa	5/m <sup>2</sup>	29	
Fritillaria meleagris	5/m <sup>2</sup>	23	
Galanthus nivalis	5/m <sup>2</sup>	23	
Narcissus pseudonarcissus	5/m <sup>2</sup>	44	



**ACD ENVIRONMENTAL**

HEAD OFFICE  
Rodbourne Rail Business Centre, Grange Lane,  
Malmesbury, SN16 0ES  
Tel: 01666 825646

Courtyard House, Mill Lane, Godalming, GU7 1EY  
Tel: 01483 425714

Suite 6, Crescent House, Yonge Close, Eastleigh, SO50 9SX  
Tel: 02382 026300

email: mail@acdenv.co.uk  
www.acdenvironmental.co.uk

**PA Housing**

scheme: Strathmore Centre  
Teddington  
client: PA Housing  
drawing: Soft Landscape  
Proposals  
date: June 2020  
scale: 1:200@A1  
drawing no: LIV22443-11C  
drawn: SR checked: HCS

Copyright of ACD Environmental Ltd. All rights described in Chapter IV of the Copyright, Designs and Patents Act 1988 have been generally asserted. 2011. Copyright of this plan remains with ACD until all fees have been paid in full.