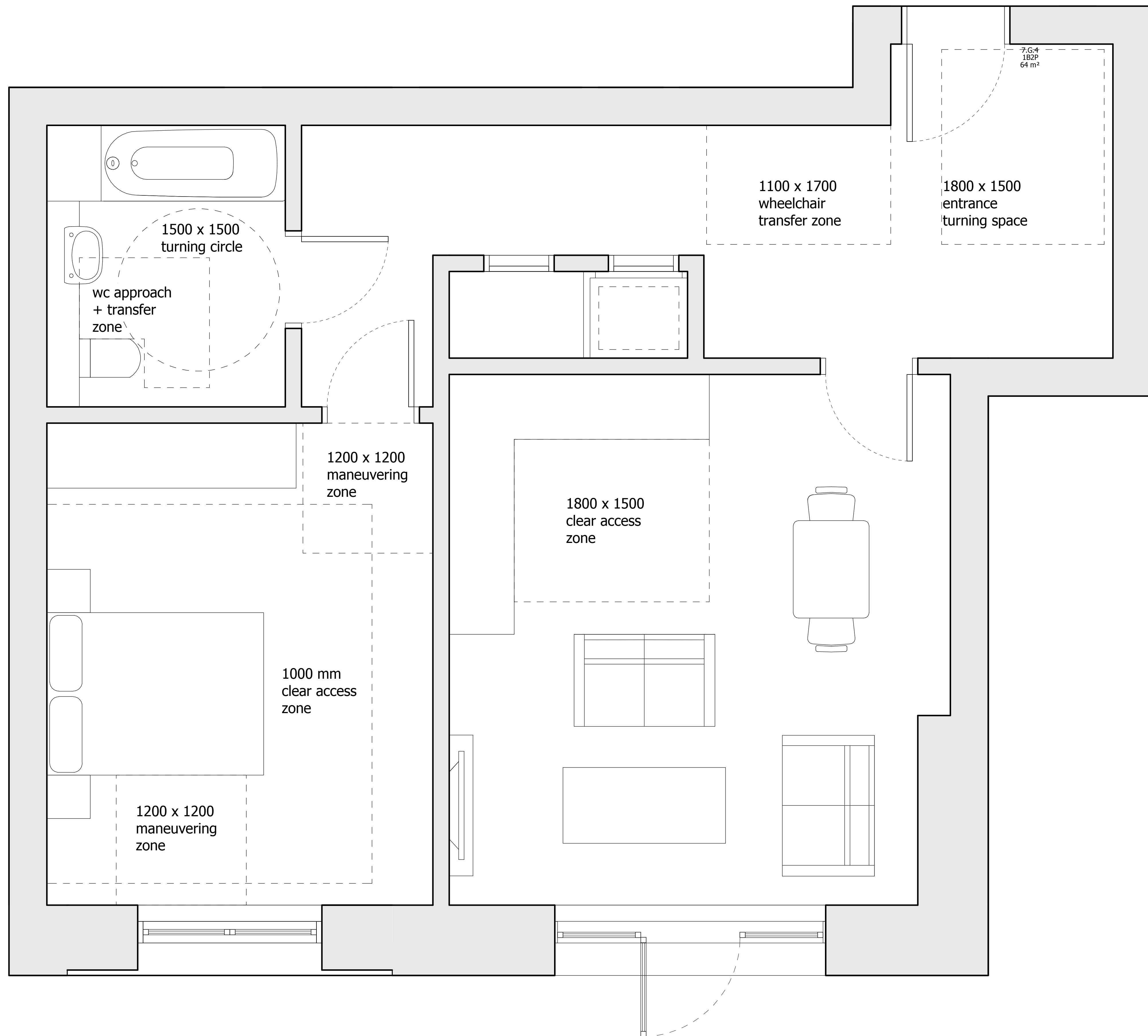
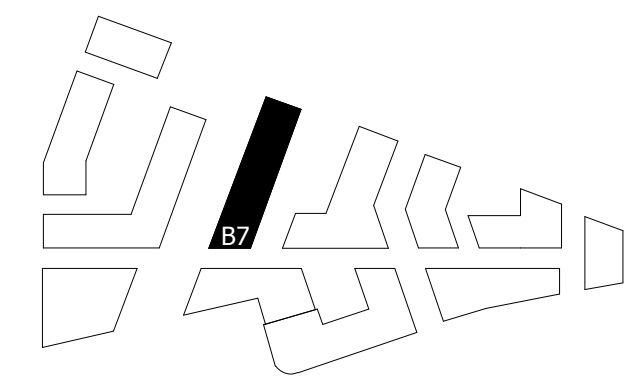
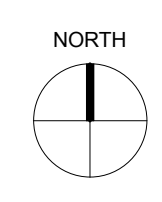


NOTES:
 DO NOT SCALE FROM THIS DRAWING. ALL DIMENSIONS TO BE CHECKED ON SITE. ALL OMISSIONS AND DISCREPANCIES TO BE REPORTED TO THE ARCHITECT IMMEDIATELY.
 ALL RIGHTS RESERVED. THIS WORK IS COPYRIGHT AND CANNOT BE REPRODUCED OR COPIED OR MODIFIED IN ANY FORM OR BY ANY MEANS, GRAPHIC ELECTRONIC OR MECHANICAL, INCLUDING PHOTOCOPIING WITHOUT THE WRITTEN PERMISSION OF SQUIRE AND PARTNERS ARCHITECTS.



7.G.4
 1B2P
 64 m²

1100 x 1700
 wheelchair
 transfer zone

1800 x 1500
 entrance
 turning space

1500 x 1500
 turning circle

wc approach
 + transfer
 zone

1200 x 1200
 maneuvering
 zone

1800 x 1500
 clear access
 zone

1000 mm
 clear access
 zone

1200 x 1200
 maneuvering
 zone

GLA SUBMISSION	27/04/20	BJ	C
DRAFT GLA SUBMISSION	24/01/20	KH	B
FINAL DRAFT PLANNING APPLICATION	21/10/19	KH	A
LEGAL REVIEW	13/09/19	KH	-

Revision description	Date	Check	Rev

SQUIRE & PARTNERS

The Department Store
 248 Ferndale Road London SW9 8FR
 T: 020 7278 5555 F: 020 7239 0495

info@squireandpartners.com
 www.squireandpartners.com

Project
Stag Brewery
 Richmond

Drawing
BUILDING 07 - ACCESSIBLE UNIT
APARTMENT 7.G.4

Drawn	Date	Scale
KHO	13/09/19	1:20 @ A1 1:40 @ A3
Job Number	Drawing number	Revision
18125	C645_B07_P_00_004	C

