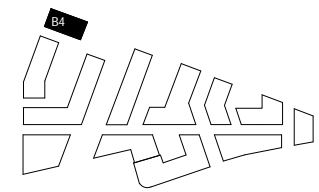




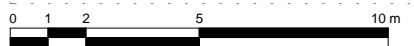
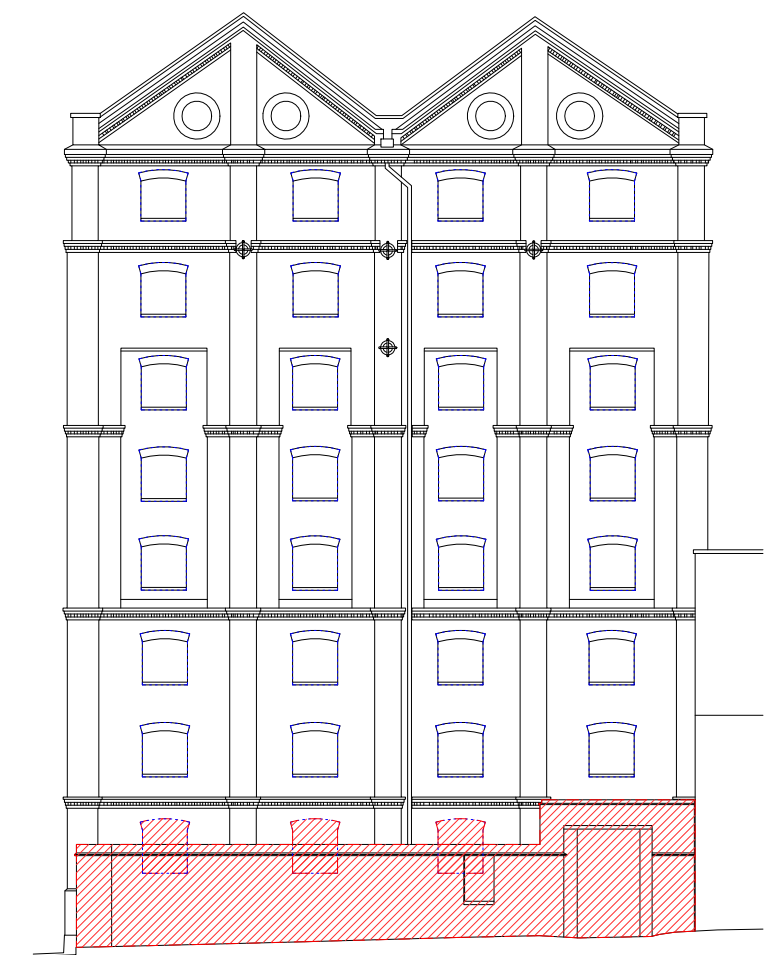
NOTES:
DO NOT SCALE FROM THIS DRAWING. ALL DIMENSIONS TO BE CHECKED ON SITE. ALL OMISSIONS AND DISCREPANCIES TO BE REPORTED TO THE ARCHITECT IMMEDIATELY.

ALL RIGHTS RESERVED. THIS WORK IS COPYRIGHT AND CANNOT BE REPRODUCED OR COPIED OR MODIFIED IN ANY FORM OR BY ANY MEANS, GRAPHIC ELECTRONIC OR MECHANICAL, INCLUDING PHOTOCOPIING WITHOUT THE WRITTEN PERMISSION OF SQUIRE AND PARTNERS ARCHITECTS.



KEY:-
 MATERIAL TO BE REPLACED
 TO BE DEMOLISHED

FFL +5.53M - Ground Floor - Proposed Entrance
 FFL +4.74M - Ground Floor - Path
 -



PLANNING SUBSTITUTION	19/11/19	KH	A
PLANNING APPLICATION	12/02/18	BJ	-
Revision description	Date	Check	Rev

SQUIRE & PARTNERS

The Department Store
 248 Ferndale Road London SW9 8FR
 T: 020 7278 5555 F: 020 7239 0495

info@squireandpartners.com
 www.squireandpartners.com

Project
Stag Brewery
 Richmond

Drawing
**FORMER MALTINGS BUILDING -
 EXISTING WEST ELEVATION
 DEMOLITION**

Drawn	Date	Scale
KHO	25/01/18	1 : 100 @ A1 1 : 200 @ A3
Job Number	Drawing number	Revision
16019	JA12_B4_E_W_002	A