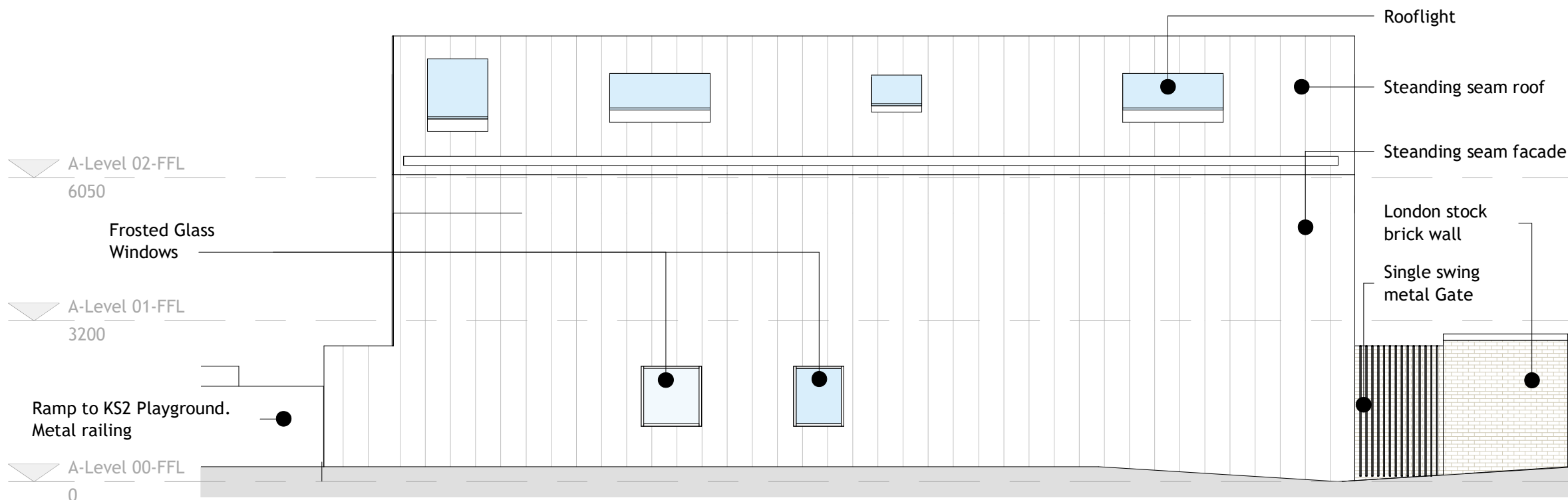
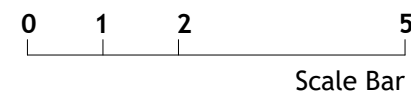


* Height to match brick fence
1 Rear Elevation (NE)
 1 : 100



2 Flank Elevation (NW)
 1 : 100



Revision	Amendment	Date
C12	Issue for planning	03/12/20
P11	Issue for coordination	30/11/20
P10	Issue for Coordination	27/11/20
P9	Issue for Coordination	24/11/20
P8	Issue for Coordination	23/11/20
P7	Partial Sign Off (FF Toilet layout TBC)	18/11/20
P6	Issue for Review + comments	16/11/20
P5	Issue for Stage Approval	03/11/20
P4	Issue for Stage Approval	19/10/20
P3	Issue for comments	02/10/20
P2	Issue for review + comments	30/09/20
P1	Issue for comments	16/09/20

Revision	Amendment	Date
C1	AK	MB
Drawn by	Reviewed by	Approved by
61020	16/09/20	1 : 100 @ A3
WCB Number	Date Created	Scale of A1

McBains

McBains Ltd
 5th Fl, 26 Finsbury Square London EC2A 1DS
 +44 (0)20 7786 7900 mcBains.co.uk

Client
 LONDON BOROUGH OF RICHMOND UPON THAMES

Project
 BARNES PRIMARY SCHOOL
 32 CROSS STREET
 BARNES, LONDON, SW13 0PD

Drawing Title
 ELEVATIONS
 SHEET 2

ARCHITECTURE									
Drawing / Document Reference									Status
LOND01 - MCB - XX - ZZ - DR - A - 0121									A2 - C12
Project	Originator	Zone	Level	Type	Discipline	Number	Suitability	Revision	

BIM Transmittal Disclaimer
 McBains Ltd makes no express or implied warranties with respect to the character, function, or capabilities of the data (inclusive of 3rd party data incorporated within), or the suitability of the data for any particular purpose beyond those originally intended by McBains Ltd. please refer to our standard terms and conditions for further details.