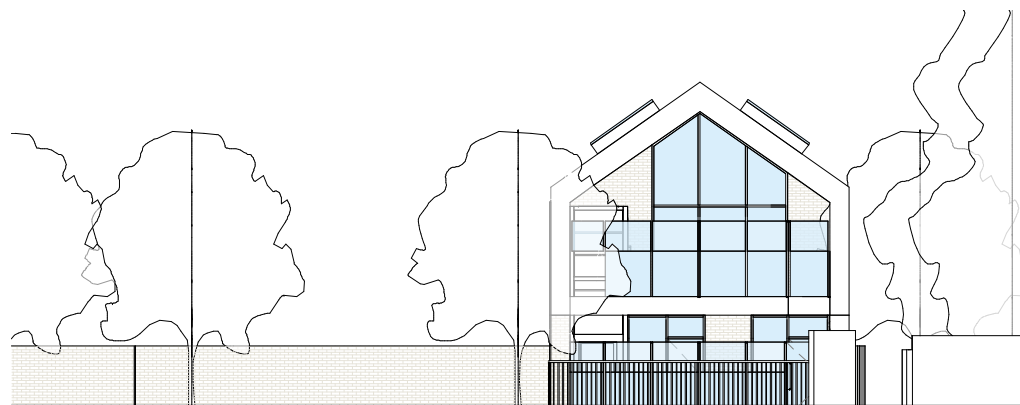


1 Proposed Cross St Elevation
1 : 200



2 Proposed Rear Elevation
1 : 200

C7	Issue for planning	03/12/20
P6	Issue for coordination	30/11/20
P5	Issue for Coordination	27/11/20
P4	Issue for Coordination	24/11/20
P3	Partial Sign Off (FF Toilet layout TBC)	18/11/20
P2	Issue for Review + comments	16/11/20
P1	Issue for Stage Approval	03/11/20

Revision	Amendment	Date
LF	AK	MB
Drawn by	Reviewed by	Approved by
61020	09/16/20	1 : 200 @ A3
MCB Number	Date Created	Scale of A3

McBains

McBains Ltd
5th Fl, 26 Finsbury Square London EC2A 1DS
+44 (0)20 7786 7900 mcbains.co.uk

Client
LONDON BOROUGH OF RICHMOND UPON THAMES

Project
BARNES PRIMARY SCHOOL
32 CROSS STREET
BARNES, LONDON, SW13 0PD

Drawing Title
PROPOSED SITE ELEVATIONS



ARCHITECTURE					
Drawing / Document Reference					
LOND01 - MCB - XX - ZZ - DR - A - 0211					Status
					A2 - C7
Project Idn	Originator	Zone	Level	Type	Discipline
					Number
					Subsidiary
					Revision

BIM Transmittal Disclaimer
McBains Ltd makes no express or implied warranties with respect to the character, function, or capabilities of the data (inclusive of 3rd party data incorporated within), or the suitability of the data for any particular purpose beyond those originally intended by McBains Ltd. please refer to our standard terms and conditions for further details.