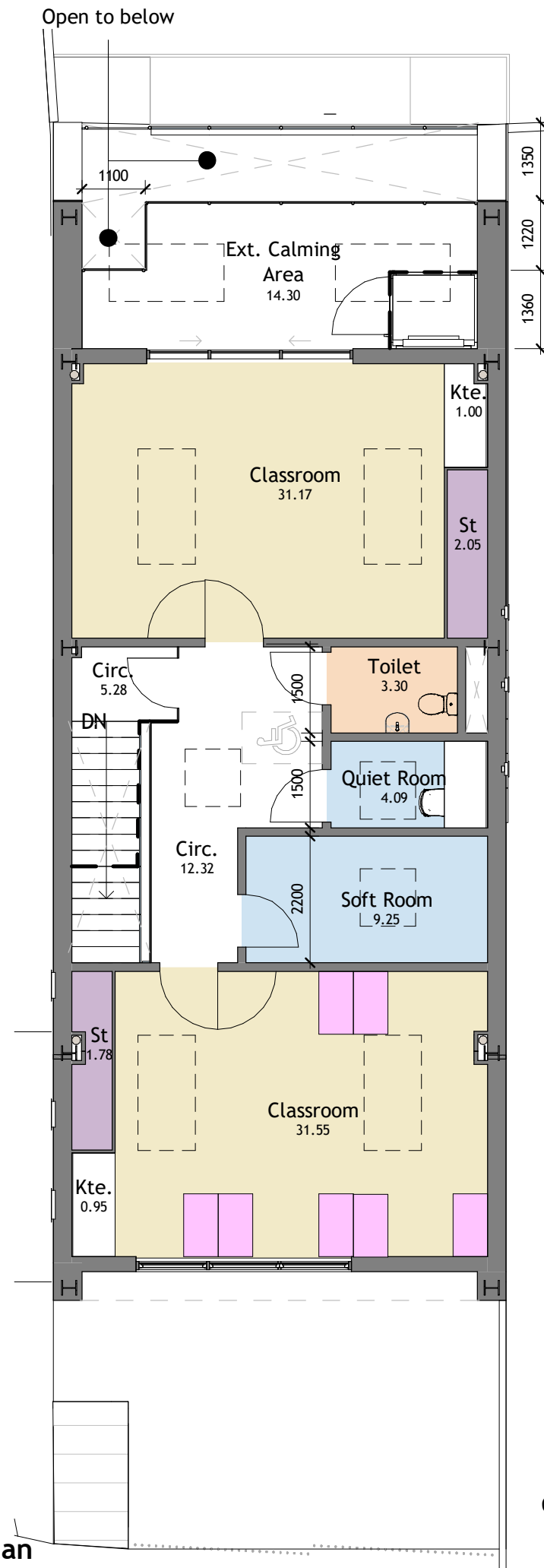




1 Ground Floor Plan

1 : 100



2 First Floor Plan

1 : 100

- Site Boundary
- Rooflight above
- Special Education
- Workstation 1090Lx600D

Legend

- Circulation
- Learning
- Outside
- Sensory needs
- Storage
- WC

Revision	Amendment	Date
C14	Issue for planning	03/12/20
P13	Issue for coordination	30/11/20
P12	Issue for Coordination	27/11/20
P11	Issue for Coordination	24/11/20
P10	Issue for Stage Approval	20/11/20
P9	Issue for review + comments	20/11/20
P8	Partial Sign Off (FF Toilet layout TBC)	18/11/20
P7	Issue for Review + comments	16/11/20
P6	Issue for Stage Approval	10/11/20
P5	Issue for Stage Approval	03/11/20
P4	Issue for Stage Approval	19/10/20
P3	Issue for comments	02/10/20
P2	Issue for review + comments	30/09/20
P1	Issue for comments	16/09/20

Revision	Amendment	Date
TW	LF	AK
Drawn by	Reviewed by	Approved by
61020	16/09/20	1 : 100 @ A3

McBains
 McBains Ltd
 5th Fl, 26 Finsbury Square London EC2A 1DS
 +44 (0)20 7786 7900 mcBains.co.uk

Client
 LONDON BOROUGH OF RICHMOND UPON THAMES

Project
 BARNES PRIMARY SCHOOL
 32 CROSS STREET
 BARNES, LONDON, SW13 0PD

Drawing Title
 PROPOSED GROUND AND FIRST FLOOR PLANS

ARCHITECTURE					
Project	Originator	Zone	Level	Type	Discipline
LOND01 - MCB - XX - ZZ - DR - A - 0110					

BIM Transmittal Disclaimer
 McBains Ltd makes no express or implied warranties with respect to the character, function, or capabilities of the data (inclusive of 3rd party data incorporated within), or the suitability of the data for any particular purpose beyond those originally intended by McBains Ltd. please refer to our standard terms and conditions for further details.

