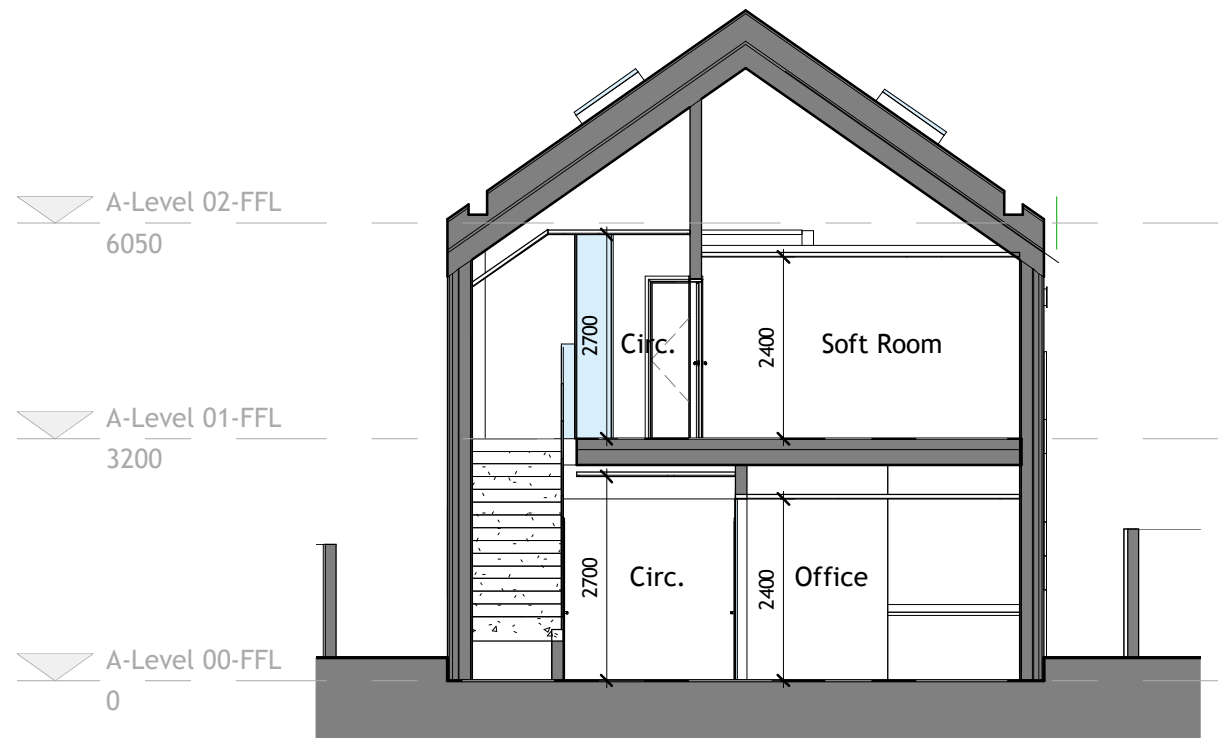
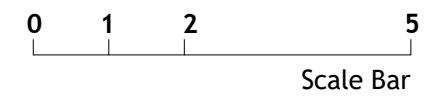


**1 Section 1**  
1 : 100



**2 Section 2**  
1 : 100



C6	Issue for planning	03/12/20
P5	Issue for coordination	30/11/20
P4	Issue for Coordination	23/11/20
P3	Partial Sign Off (FF Toilet layout TBC)	18/11/20
P2	Issue for Review + comments	16/11/20
P1	Issue for Stage Approval	03/11/20

Revision	Amendment	Date
TW	LF	MB
Drawn by	Reviewed by	Approved by
61020	12/13/19	1 : 100 @ A3
WCB Number	Date Created	Scale of A3

**McBains**

McBains Ltd  
5th Fl, 26 Finsbury Square London EC2A 1DS  
+44 (0)20 7786 7900 mcbains.co.uk

Client  
LONDON BOROUGH OF RICHMOND UPON THAMES

Project  
BARNES PRIMARY SCHOOL  
32 CROSS STREET  
BARNES, LONDON, SW13 0PD

Drawing Title  
SECTIONS

<b>ARCHITECTURE</b>									
Drawing / Document Reference									
LOND01 - MCB - XX - ZZ - DR - A - 0130									
Project Originator Zone Level Type Discipline Number Suitability Revision									
A2 - C6									

BIM Transmittal Disclaimer  
McBains Ltd makes no express or implied warranties with respect to the character, function, or capabilities of the data (inclusive of 3rd party data incorporated within), or the suitability of the data for any particular purpose beyond those originally intended by McBains Ltd. please refer to our standard terms and conditions for further details.