

1. Introduction

Hollaway

Hollaway is a practice that places people and feeling at the core of its philosophy of architecture.



Established in 1913, Twickenham Studios in the borough of leafy Richmond in West London, offers bespoke services to all media from stages, through to sound and picture post production. The multi award winning studios are a much-loved facility and a world-renowned heritage brand.



Boyer brings together professionals from a diverse range of disciplines and background to offer bespoke solutions to meet our client's needs. Our clients include major house builders, private developers, educational institutions, the NHS, local authorities and landowners.

We pride ourselves on being collaborative, creative and commercial but above all dedicated to always having the best skilled and trained professionals for your project.



Montagu Evans exists to create inspiring places to live, work, communicate and connect. We care about Legacy, partnerships and people. Advising clients with complex planning and development challenges.



We care about the communities we serve—because they're our communities too. This allows us to assess what's needed and connect our expertise, to appreciate nuances and envision what's never been considered, to bring together diverse perspectives so we can collaborate toward a shared success.

We're designers, engineers, scientists, and project managers, innovating together at the intersection of community, creativity, and client relationships. Balancing these priorities results in projects that advance the quality of life in communities across the globe.



Elite Ecology is a dynamic and innovative ecological consultancy which offers wide-ranging environmental solutions for planning applications and personal interest. We ensure that the professional advice that we give to our clients remains clear, concise and compliant with the relevant ecological legislation. Our headquarters are located centrally within the county of Staffordshire and we have a team of experienced ecologists based around the UK.



ACD is an environmental consultancy with over 30 years' experience. In recent years we have developed and grown to provide a full range of services including arboriculture, landscape architecture, ecology and archaeology. We can provide solutions relating to assessment, planning, design and management of a range of environmental issues, and pride ourselves on providing a fast, responsive and commercially aware service to our clients.



We are a multidisciplinary group with backgrounds in engineering, architecture and environmental science. We work as consultants for buildings, large developments and masterplans and provide carbon management advice for businesses. Our diverse experience and in-depth technical knowledge position us to provide exceptional added value to design teams, developers and corporate clients, working as lead consultants, engineers or sustainability champions overseeing the client's project goals.



LOGIKA Group comprises Air Quality Consultants (AQC), Noise Consultants and Logika Consultants, linked by ownership. AQC was formed in 1993, following which Noise Consultants and Logika Consultants were established to provide clients with a wide range of high quality and complementary environmental consultancy services. LOGIKA Group provide tailored innovative solution focused consultancy, providing expert advice and support to developers, industry, local authorities, and policy makers with regards to air quality, noise, flood risk, drainage, green infrastructure, ecology and natural capital.

Hollaway is an award winning architecture and interiors practice that places people and feeling at the core of its philosophy of architecture. With offices in Kent and London and a strong reputation for design, the practice is working in a wide range of sectors including hospitality, hotels, restaurants, education and housing, and in recent years has worked on a number of large scale regeneration schemes across Kent including Dreamland at Margate, the transformative Rocksalt restaurant at Folkestone, and Folkestone Academy.

Recent projects include the award winning Process Gallery for artist Nick Veasey, the first new build Picturehouse in the UK at Ashford for developers Stanhope, a new Winery, Gin Works and Brewery for Chapel Down, and a number of large regen and housing schemes in London including Bromley South Central for U & I and the Fisheries in Hackney's London Fields.

We are committed to delivering high quality projects that present innovative design solutions and excellent value through careful control of cost and programme that ensure client satisfaction.

For all projects undertaken, regardless of scale or budget, we strive to gain a clear understanding of our client's brief to define clear objectives and requirements. We spend time working with our clients and specialist consultants to identify opportunities, allowing us to investigate design options to produce an optimum proposal.



Hollaway - Selected Portfolio

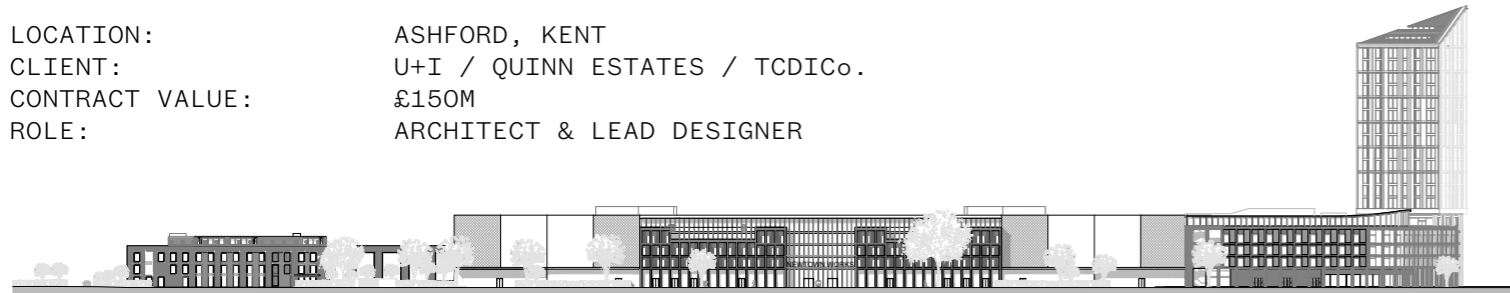
New Town Works Planning Approved April 2020

When a film producer fell for Ashford's historic Newtown Works as a promising site for its Creative District film studios plans. Once proud home to the manufacture of Victorian Britain's train carriages, the derelict Newtown Works is the UK's longest listed building, and as such any plans for its redevelopment would need to respect its historicity.

Working closely with Historic England, it was agreed that the 340-metre-long locomotive sheds could lose their roofs, and that one of the sheds would be demolished to make way for a central street, the changes allowing for a mixed-use site, one that as well as film studios housing world renowned names, would also include co-worker and residential spaces, and a 180-bed hotel.

A light bulb moment, the decision to lose the roofs and create the street was a proper breakthrough. A potentially hugely valuable site, over the last 30 years, multiple ideas for developing the site had stalled, the combination of Newtown's heritage and dilapidated state proving an obstacle too far. Thanks to Historic England's openness, we now have a development that allows the new and old to come together. Better still, it sees the new grow out of the old.

LOCATION: ASHFORD, KENT
CLIENT: U+I / QUINN ESTATES / TCDICO.
CONTRACT VALUE: £150M
ROLE: ARCHITECT & LEAD DESIGNER



CGI- Aerial view



CGI - Section



CGI - Studio Facade



CGI - External Space

Dagenham Studios Ongoing

East brook studios is an emerging proposal for a key site in East London. Located in Dagenham, the current brownfield land offers a significant site directly opposite Dagenham East underground station. With promising transportation already in place, the biggest hurdle to overcome in the development of this site was how to create a true destination. With aspirations to bring TV and film studios to East London, the brief evolved in line with the creative industry that had already been earmarked for the foundations of the scheme.

Hollaway were appointed by Creative City to design a 'Creative City.' A place where creative industries could thrive, putting Dagenham back on the map. The key to this was to offer variety. Film and TV studios alone would provide much needed employment, but the aspiration for the site was much larger. To create a place where people could eat, drink, work, learn, stay, and even live.

LOCATION: DAGENHAM, EAST LONDON
CLIENT: CREATIVE CITY
CONTRACT VALUE: £295M
ROLE: ARCHITECT



CGI- Aerial view



CGI- Interior



CGI

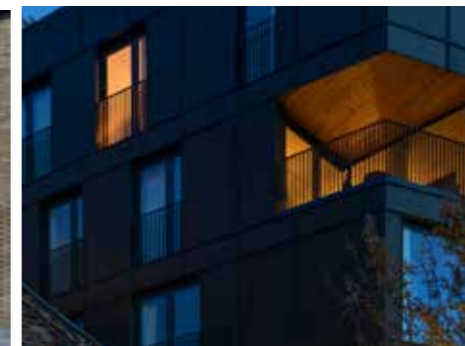
The Fisheries Completed in 2018

Some buildings have no place being where they are. No real sense of the past, no real connection with the present, and no real idea of what they mean for the future, they fail not because there is no formal merit in their design, but rather because they don't work here, right now.

The Fisheries is not that building. On the contrary, having lived and worked in Hackney for decades, having made his living in the food and beverage industry, and being a massive advocate of WeWork culture, it was the client that drove a design consisting of two halves - architecturally as well as in terms of bringing residential and work spaces under the same roof. It was his idea to shroud much of the building in a net.

Utterly engaged, as comfortable with the big picture as he was the finer details, it made for a design and build process, of which the end result is a small and highly relevant mixed-use scheme, one that pays its dues to the fish market that once occupied its footprint, that is in every respect informed by the local, and that possesses the edge and thrust of the area. It looks the part. It feels just right. It works here, right now. It's Hackney.

LOCATION: LONDON FIELDS, HACKNEY
CLIENT: PRIVATE
CONTRACT VALUE: £11M
ROLE: ARCHITECT & LEAD INTERIOR DESIGNER



Elwick Place Completed in 2018

Frequent visitors to Elwick Place, Ashford's brand new leisure complex, will perhaps have wondered at the sight of a man lying in the street, pedestrians and cars gently stopping and re-routing to avoid him. Fear not: all is well. A local resident, he has taken it upon himself to test whether one of Britain's first 'shared surfaces' really does give pedestrians right of way. Until now completely unscathed, his body-on-the-line experiment proves that the scheme works.

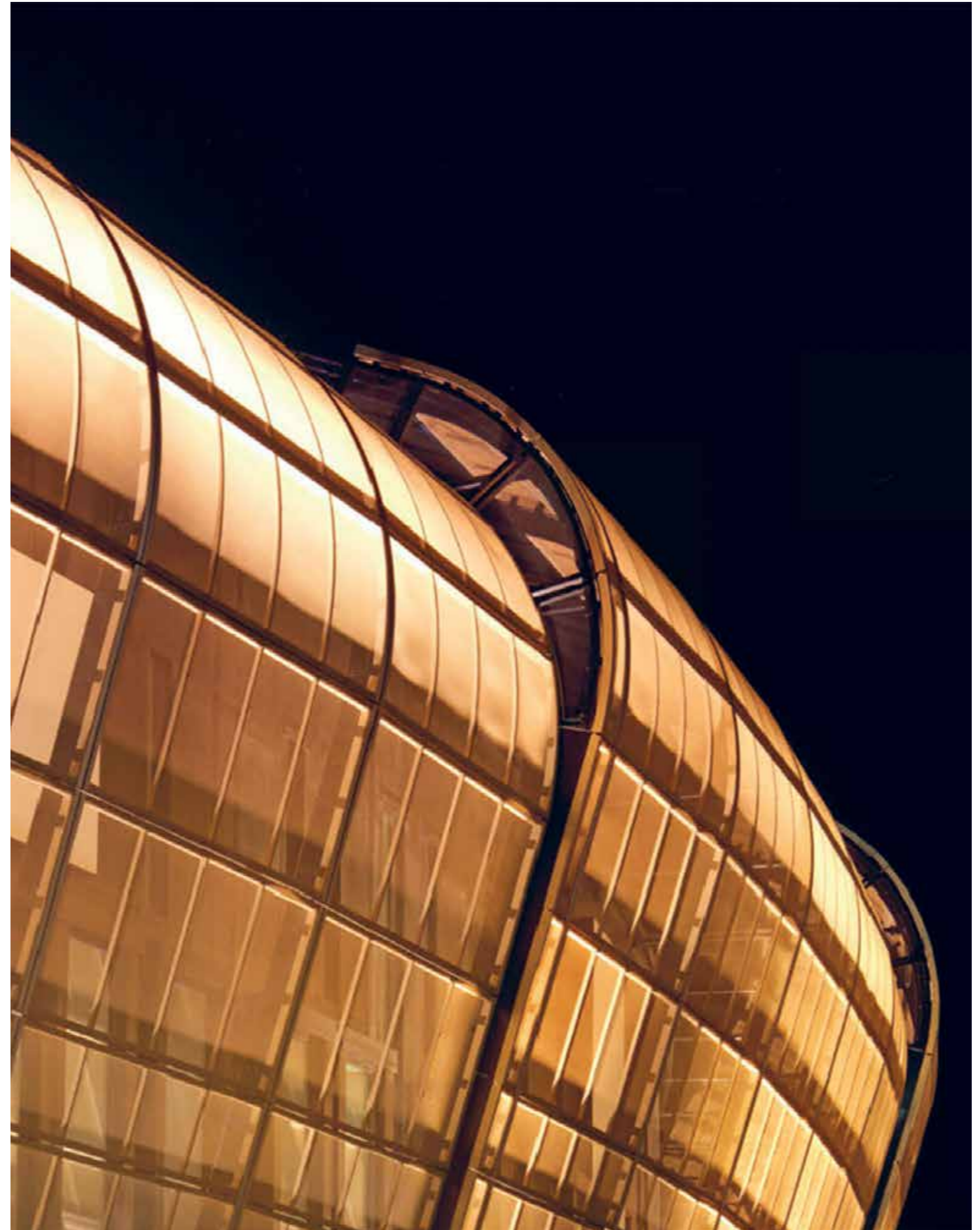
Part of a town-wide regeneration project master planned by Hollaway, Elwick includes the country's first new-build 1000-seat Picturehouse, a 60-bed hotel, a clutch of restaurants and shops, and sits in the centre of the town. One of many counter-intuitive fruits of a partnership between the public and the private, it's the result of a regeneration policy initiated and managed by Ashford Borough Council, whose vision sees the town eventually restored to its glory days.

With its original cattle-market gates, flying animals, giant picture frames, the cinema's time-responsive façade, and a rich mix of activities, Elwick Place is an investment in the future, and one that (just like the old days) welcomes with open arms the individual, the different, and the positively eccentric - the man who lies down in the street very much included.

LOCATION: ASHFORD, KENT
CLIENT: STANHOPE PLC
CONTRACT VALUE: £26M
ROLE: ARCHITECT



Photographs - Completed



Photograph - Completed

Project Motorhouse Completed in 2018

Britain's coastal towns are great harbourers of architectural legacies, buildings whose design, engineering, and purpose are living testament of the creativity and prowess of times gone by. Ramsgate in Kent is one such place, its Motor House one such building.

Now utterly dilapidated, the Motor House was carved by Victorian builders out of Ramsgate's chalk cliff, the coming together of an extraordinary imagination and not much more than pickaxes resulting in an events hall, an amphitheatre, and a roof over which the town's inhabitants and visitors happily promenaded. Chief among its many attributes is the fact that the amphitheatre is positioned at the back of the building, in the sun, out of the wind, and in possession of views - through the building - of the sea. It has been many things since, including a motor museum, and has for the last decade lain unused and largely forgotten.

Our design for the Motor House aims to restore it to its former glory, creating an events destination comprised of an outdoor and boutique indoor cinema, a restaurant, and community space. Critically, it proposes that the building's stucco façade consist of a series picture frame windows, the view from the inside thereby experienced as one might art in a gallery. In a word, we hope to make this extraordinary building live again.



CGI- Interior



CGI- Interior



CGI - Aerial view



CGI

THE CREATIVE DISTRICT IMPROVEMENT CO

We masterplan, develop and operate mixed-use schemes for the creative industries that revitalise neighbourhoods.

TCDiCo is backed by LaSalle, one of the largest institutional property investment funds in the world. The company is currently working on creative clusters in and around the UK worth more than £500m and we are committed to bringing online more than 1m sq.ft of world-class studio space in the UK by 2023.

Our proven approach to urban regeneration is grounded in our belief that the creative industries will significantly underpin the future of the UK economy. The way people work, how companies operate and how content and creativity are consumed have changed beyond recognition during the last 10 years.

“The creative industries account for £92 billion of GVA in the UK, 2 million jobs and are growing twice as fast as the economy as a whole”

Policy Paper Creative Industries:
Sector Deal Report. Published DCMS 28th March 2018

“To meet current demand for UK film and high-end TV production, land the size of 100 football pitches is needed to host the 1.9 Million sq ft of new studio space required by 2032”

Lights Camera Action:
Report Published by Lambert Smith Hampton 2018



THE CREATIVE INDUSTRY CONTRIBUTES 11% OF UK GDP

“When we commit to a scheme, we are committing to oversee its future. Once the scheme is delivered, we bring in our years of operating experience, including strategic anchor lettings and estate management. We span leisure, retail and hospitality, all positioned around our core DNA of the film and TV studio industry. We create vibrant destinations.”



THE TV & FILM SECTOR PRODUCES \$25BN A YEAR OF CONTENT GLOBALLY

The Creative District Improvement Co