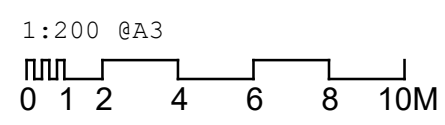




KEY PLAN
N.T.S

Proposed New Build/Alterations

Existing Trees to be removed



Hollaway

London | 10A Acton Street | London | WC1X 9HQ
T +44 (0) 20 7096 5420 | E london@hollawaystudio.co.uk | W www.hollawaystudio.co.uk

East | The Tramway Stables | Rampart Road | Ryde | East | CT21 1BQ
T +44 (0) 1303 260 515 | E east@hollawaystudio.co.uk | W www.hollawaystudio.co.uk

Project | Twickenham Studios
St Margarets, London

Client | Twickenham Studios London Ltd.

Title | Block A - Proposed First Floor Plan

Status | **PLANNING**

Scale@A3 | 1:200 Date | 15.12.20 Drawn | Chk'd |

Project Number | Drawing Number | Revision
18.141 | 200.01 | R0