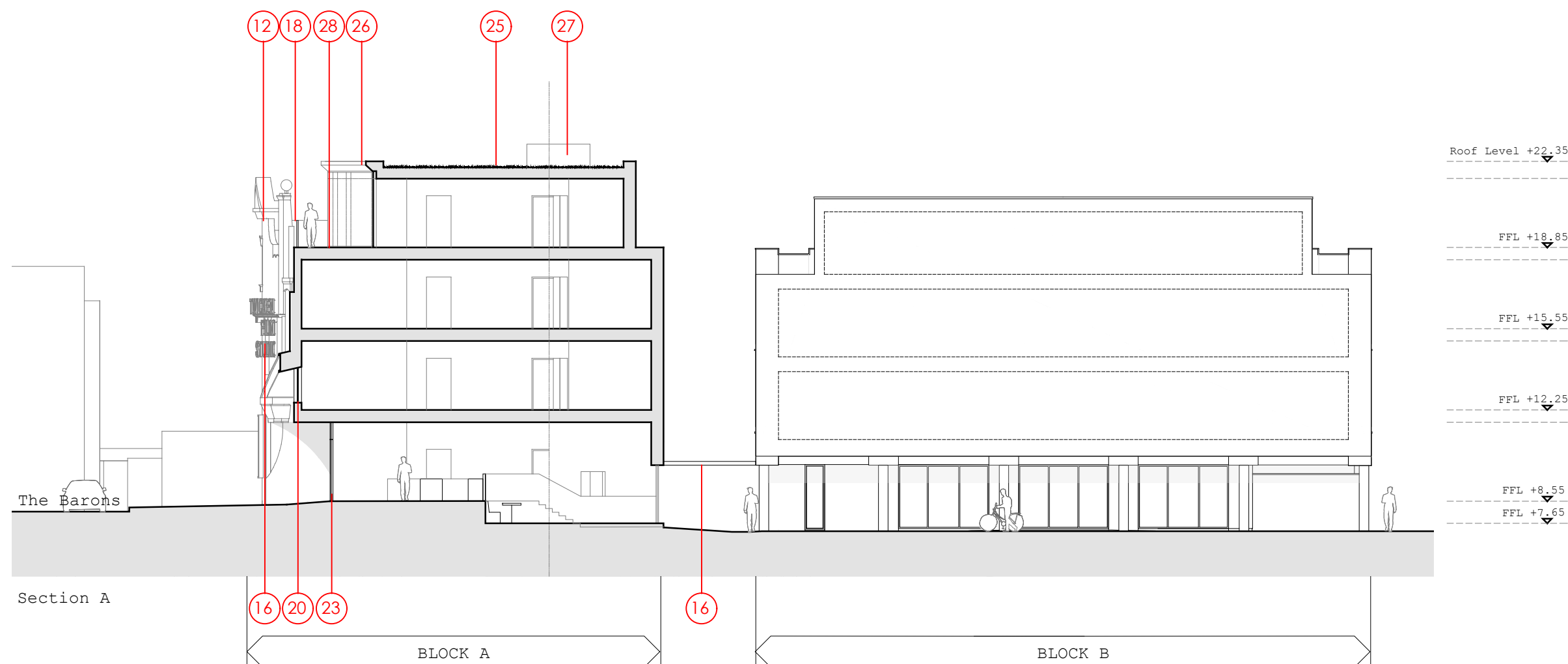


KEY PLAN
N.T.S



The Barons

Section A

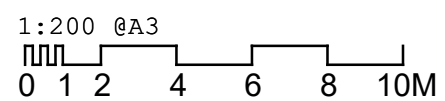
16 20 23

BLOCK A

16

BLOCK B

Roof Level +22.35
FFL +18.85
FFL +15.55
FFL +12.25
FFL +8.55
FFL +7.65



Refer to drawing 18.141.500.00 Existing and Proposed Materials

Hollaway

London | 104 Acton Street | London | WC1X 8HG
T +44 (0) 20 7096 5425 | E london@hollawaystudio.co.uk | W www.hollawaystudio.co.uk

Project | Twickenham Studios
St Margarets
Client | Twickenham Studios London Ltd.
Title | Block A - Proposed Section
Status | **PLANNING**

Scale@A3 | 1:200 Date | 06.01.21 Drawn | FK Chk'd | LC

Project Number | Drawing Number | Revision
18.141 | 200.20 | R0