
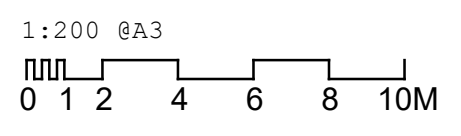


KEY PLAN
N.T.S



 Proposed New Build/Alterations



Hollaway

London | 10a Acton Street | London | WC1X 9NS
 T +44 (0) 20 7096 5425 | E london@hollawaystudio.co.uk | W www.hollawaystudio.co.uk

Project | Twickenham Studios
 St Margarets
 Client | Twickenham Studios London Ltd.
 Title | Block E - Proposed Roof Plan

Status | **PLANNING**

Scale | A3 | 1:200 Date | 06.01.21 Drawn | FK Chk'd | LC

Project Number | 18.141 Drawing Number | 240.03 Revision | R0