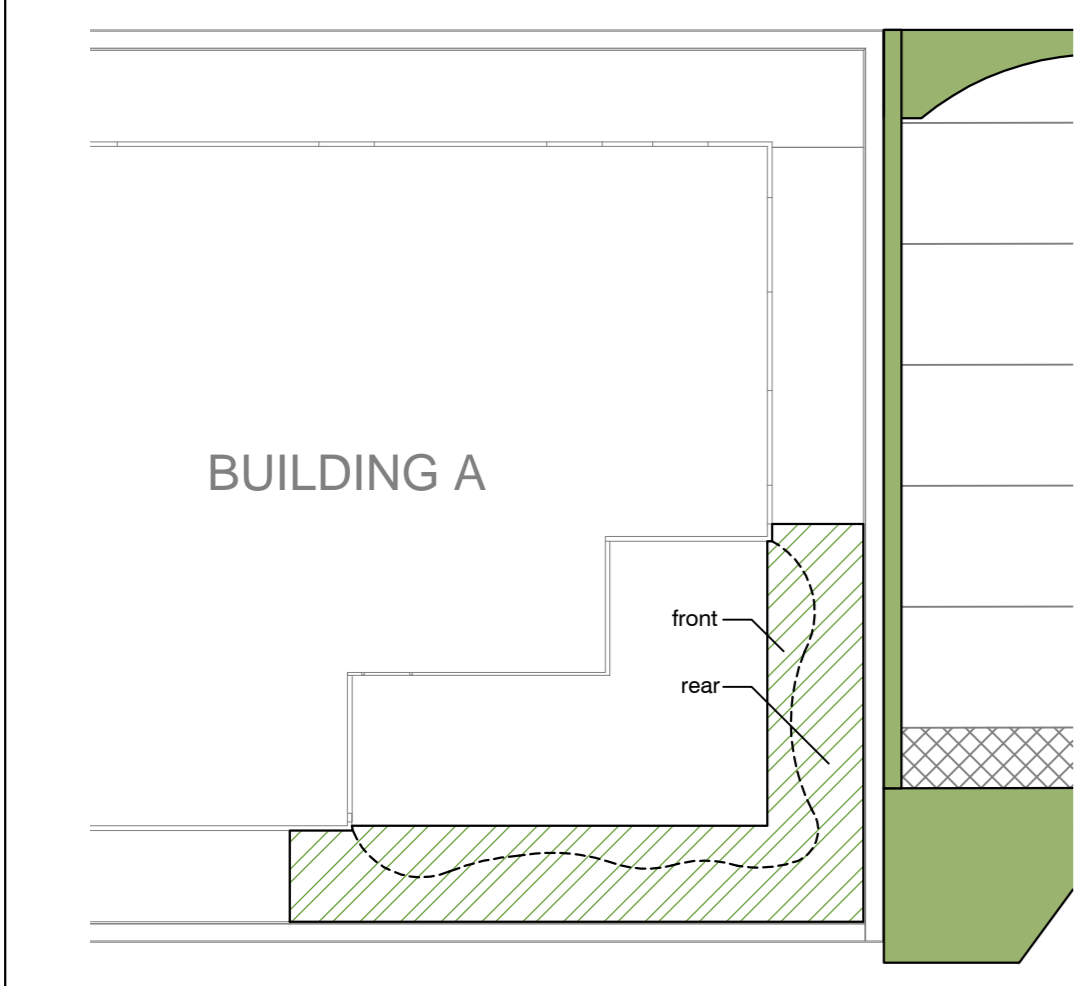


8.2m² Frontage perennial planting
 13no. Allium hollandicum 'Purple Sensation'
 20no. Calamagrostis × acutiflora 'Overdam'
 15no. Salvia × sylvestris 'Mainacht'

10m² Frontage perennial planting
 16no. Allium hollandicum 'Purple Sensation'
 25no. Calamagrostis × acutiflora 'Overdam'
 18no. Salvia × sylvestris 'Mainacht'

- LEGEND**
- Proposed frontage perennial planting
 - Proposed roof garden planting
 - Proposed ornamental shrub planting
 - Proposed amenity grass

Inset: Communal roof garden planting to Building A (1:150)



| PLANTING SCHEDULE | | | | |
|---|------------------------|-----------|----------------------------|--------|
| Ornamental shrub planting | Form/Height | Condition | Density | Number |
| Cornus alba 'Aurea' | 60-80cm Branched | C 3L | as shown | 6 |
| Euonymus fortunei 'Emerald Gaiety' | 30-40cm Bushy | C 5L | 4/m ² | 26 |
| Hedera helix 'Glacier' | 50-60cm Several shoots | C 2L | 3/m ² | 15 |
| Hypericum 'Hidcote' | 50-60cm Bushy | C 5L | 3/m ² | 14 |
| Lonicera ligustrina 'Lemon Beauty' | 40-50cm | C3-5L | 4/m ² | 8 |
| Photinia × fraserii 'Red Robin' | 80-100cm Bushy | C 5L | 2/m ² | 19 |
| Viburnum davidii | 30-40cm Bushy | C 5L | 3/m ² | 7 |
| Site frontage perennial planting | | | | |
| Planted in species group linear swathes of 3-7 (Calamagrostis and Salvia) and 7-9 (Allium) | | | | |
| Allium hollandicum 'Purple Sensation' (20%) | c. 10cm | bulb | 8/m ² | 81 |
| Calamagrostis × acutiflora 'Overdam' (50%) | 25-30cm | C 1-2L | 5/m ² | 126 |
| Salvia × sylvestris 'Mainacht' (30%) | 15-20cm | C 1-2L | 6/m ² | 92 |
| Roof Garden perennial planting | | | | |
| Planted in species group linear swathes of 5-9. 'front' plants focussed to the inner 1/3 depth of the roof garden, with variable overlap with 'rear' plants, and without straight/defined boundaries. | | | | |
| Allium schoenoprasum | 10-15cm | plug-0.5L | front (12/m ²) | 27 |
| Armeria maritima 'Splendens' | 8-10cm | plug-0.5L | front (12/m ²) | 27 |
| Calamintha nepeta | 15-20cm | C 1L | rear (8/m ²) | 18 |
| Erodium manescavii | 10-15cm | C 9cm | front (12/m ²) | 27 |
| Euphorbia cyparissias 'Fens Ruby' | 10-15cm | C 0.5L | rear (8/m ²) | 18 |
| Festuca glauca 'Blaufuchs' | 15-20cm | C 1L | front (12/m ²) | 27 |
| Geranium pyrenaicum 'Bill Wallis' | 8-10cm | plug-0.5L | rear (8/m ²) | 18 |
| Lavandula angustifolia 'Hidcote' | 15-20cm | C 1-2L | rear (8/m ²) | 18 |
| Limonium platyphyllum | 10-15cm | C 0.5L | rear (8/m ²) | 18 |
| Salvia × sylvestris 'Mainacht' | 15-20cm | C 1-2L | rear (8/m ²) | 18 |
| Sedum 'Purple Emperor' | 8-10cm | C 0.5L | rear (8/m ²) | 18 |
| Silene uniflora 'Druett's Variegated' | 8-10cm | C 0.5L | front (12/m ²) | 27 |
| Sisyrinchium striatum | 15-20cm | C 0.5L | rear (8/m ²) | 18 |
| Stachys byzantina 'Silver Carpet' | 10-15cm | C 0.5L | rear (8/m ²) | 18 |
| Stipa tenuissima | 15-20cm | C 0.5L | rear (8/m ²) | 18 |

PLANTING SPECIFICATION

IMPLEMENTATION
 All planting to be carried out in the first available planting season following reasonable completion of the development.

TOPSOIL
 Topsoil provision to follow recommendations of any ground investigation reports. A minimum of 400mm depth topsoil shall be provided to shrub and perennial planting areas, and 150mm topsoil to grassed areas. Any imported soil to be to BS 3882, medium texture, neutral pH value, reasonably stone free with no stones over 20mm in size. Finished topsoil levels to be 25mm above adjacent paved surfaces, and 300mm wide hard surfaced mowing margin (gravel or paving) to be provided where grass adjoins buildings.

ORNAMENTAL SHRUB AND PERENNIAL PLANTING
 Ornamental shrub and perennial planting to be spaced evenly in species groups as detailed in the schedule or as otherwise stated on the drawing. Before planting remove any non-perishable containers and prune any badly damaged roots. Plant upright or well-balanced, returning excavated soil to finished level at original soil mark.

ROOF GARDEN
 Substrate: Boughton Semi Intensive 2 Green Roof Substrate min. 200mm depth (or similar green roof substrate appropriate to semi-intensive plant material). Plug and small container grown plants planted as perennials above.

CLIMBING PLANTS
 Galvanised steel wire rope using steel vine eyes and tensioners to create 3 strands of support at 30cm height intervals on stretches of solid wall. Climbers to be planted 200mm away from the base of the wall, angled in towards the wall. Stems to be spread and tied in to the wire using garden twine at base of solid wall, or angled to trail along rear of parking spaces at base of windows.

GRASS SEEDING
 Amenity grass to be Emorsgate EL1 – Flowering Lawn Mixture sown at 4g/sq.m.

WATERING
 Water all newly planted areas to soil capacity at planting.

MULCH
 75mm depth of medium grade chipped bark mulch, size 25-65mm, no fines, free of pests, disease, fungus and weeds to be supplied and spread to all ornamental and frontage perennial planting areas.

- ESTABLISHMENT MAINTENANCE (minimum 5 years)**
- Shrubs, perennials and grass to be maintained during establishment, and any plants or grassed areas that die, fail to establish, are removed or become damaged or diseased within the first 5 years shall be replaced with plants of the same size and species.
 - Make fortnightly general maintenance visits during first growing season. Visits to include weed control around the base of all plants by hand weeding, watering as detailed below, and amenity grass cutting.
 - Amenity grass cutting to be relaxed for periods of 4-6 weeks in April-July to allow grass to flower.
 - Clip shrubs twice per year in autumn and spring to maintain compact, bushy shape to c. 1-1.5m in height.
 - Tie in climber growth to supports for one year, or until well-established. Annually remove growth outside desired area of wall.
 - Cut *Cornus*, perennial beds and roof garden (excl. *Festuca* and *Stipa*) back hard in March and remove arisings.
 - Fork over shrub beds annually, topping up mulch to the specified depth.
 - Water to soil capacity during first six months following any period of four days without rain. Beyond six months, water weekly during periods of drought until fully established.
 - Collect and remove all maintenance arisings and rubbish.

| | | |
|-----|--|----------|
| B | Minor adjustments to planting. | 07.08.19 |
| A | Changes to planting to reflect amended parking layout. | 05.08.19 |
| REV | NOTES | DATE |

Duke of York, 672 Hanworth Rd, Hounslow
Landscaping Proposals
 Ref no. 18/11/194/LAN_01b | 1:150 @ A2 | July 2018

