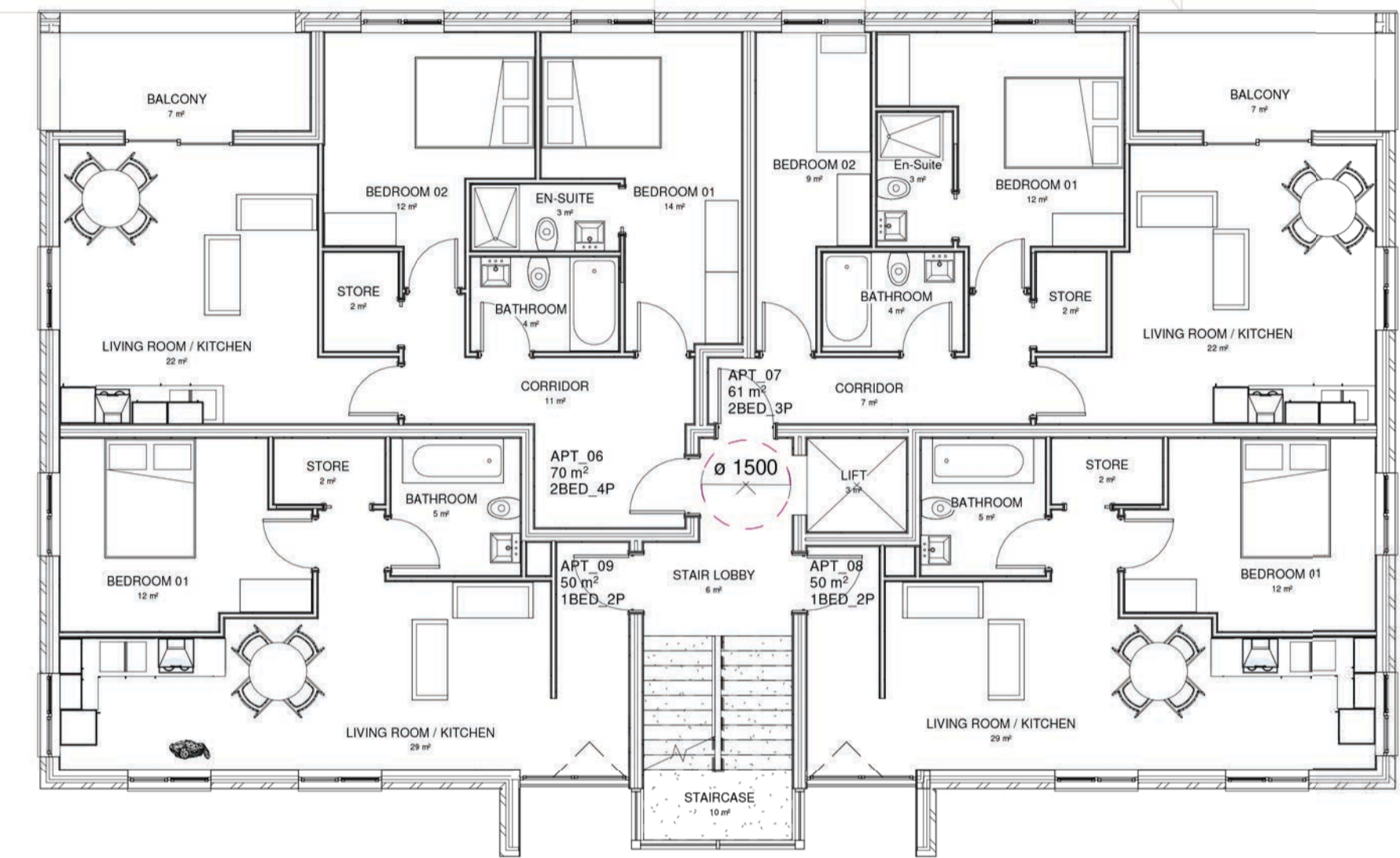


BUILDING A



BUILDING B

PROPOSED FIRST FLOOR
1 : 100

SCHEDULE OF ACCOMMODATION

No.	TYPE	AREA
Apt_01	2BED_3P	62 m ²
Apt_02	1BED_2P	51 m ²
Apt_03	2BED_3P	61 m ²
Apt_04	1BED_2P	58 m ²
Apt_05	3BED_5P	90 m ²
Apt_06	2BED_4P	70 m ²
Apt_07	2BED_3P	61 m ²
Apt_08	1BED_2P	50 m ²
Apt_09	1BED_2P	50 m ²
Apt_10	2BED_4P	70 m ²
Apt_11	2BED_4P	70 m ²
Apt_12	2BED_4P	70 m ²
Apt_13	2BED_3P	68 m ²
Apt_14	1BED_2P	50 m ²
Apt_15	2BED_3P	64 m ²

5 X 1BED_2P
5 X 2BED_3P
4 X 2BED_4P
1 X 3BED_5P
15 APARTMENTS



Construction staff and operatives must ensure the principle contractor has provided thorough and accurate information on all health and safety aspects relating to the designs identified on this drawing include the review of:

- Designers/contractors risk assessments
- Method statement
- Permit to work
- Pre construction information

The designers note that the following health and safety risk relating to this drawing have not been eliminated during the design process:

ref	residual risk	revision	date	by	chk
Z	Amended drawings for 15 units		30/04/20	DM	

All dimensions to be verified on site, and the Architect informed of any discrepancy. All drawings and specifications should be read in conjunction with the Health and Safety Plan; all conflicts should be reported to the CDM Co-ordinator.

This drawing is the copyright of Bowman Riley Architects Limited. ©
DO NOT SCALE THIS DRAWING

preliminary comment construction
 planning tender record

LINDEN HILL			
drawn by	checked by	date	scale @ A1
DM	TP	18/05/18	As indicated
HANWORTH ROAD WHITTON			

BOWMAN RILEY
ARCHITECTS

2nd Floor - 2 Sycamore Street - London - EC1Y 0SF - 0203 7286500
LEEDS | LONDON | SKIPTON
www.bowmanriley.com

PROPOSED FIRST FLOOR		
project number	drawing number	revision
8129	(000) 003	Z