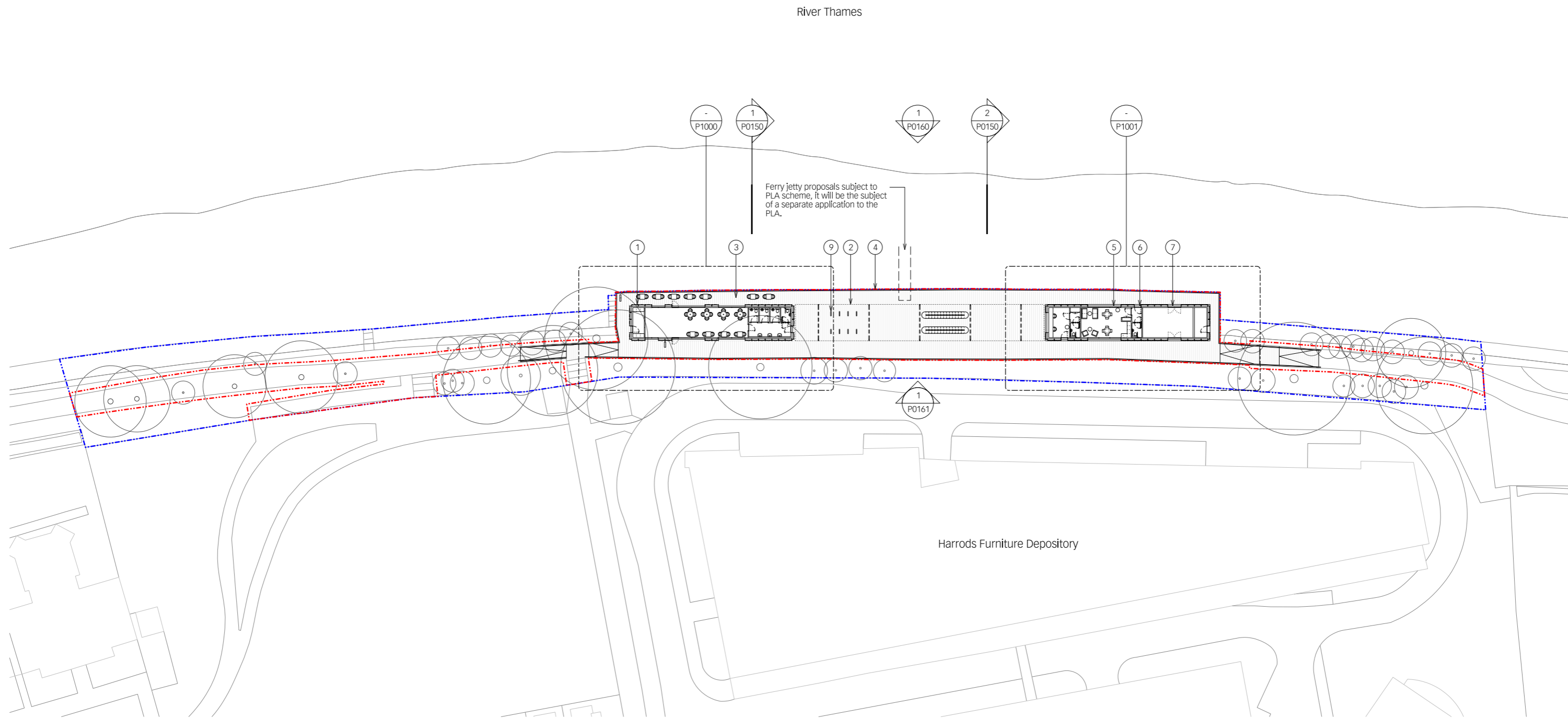


- material key:
- ① metal framed cladding panel with back-illuminated tensile fabric
 - ② metal framed canopy with back-illuminated tensile fabric
 - ③ recycled composite decking
 - ④ painted metal railing to match existing
 - ⑤ metal framed glazing
 - ⑥ metal framed glazed door
 - ⑦ metal faced door
 - ⑧ PV panels
 - ⑨ metal sheffield stand
 - ⑩ 4m high lamp post
 - ⑪ low level lighting bollard



rev	date	by	revisions
A	21.12.20	PF	Access ramps updated, Plant room added
B	15.01.21	PF	Access ramps updated.
C	18.01.21	PF	Material key updated
D	22.01.21	PF	Minor amendment on internal layout

key plan

notes

- Ownership boundary
- Development boundary

architect

Lifschutz Davidson Sandilands
 Island Studios, 22 St. Peter's Square, London W6 9NW T +44 (0)20 8600 4800 mail@lds-uk.com

project	Proposed site plan		
Harrods Wharf			
client	scale at A1	scale at A3	drawn date
Jamie Waller	1:300	1:600	RF 11.20
	job no.	drawing	rev.
	1178	P0101	D



This drawing is the property of Lifschutz Davidson Sandilands Ltd. No disclosure or copy of it may be made without the written permission of Lifschutz Davidson Sandilands Ltd.
 LDS Standard Frame V1 - 11.10