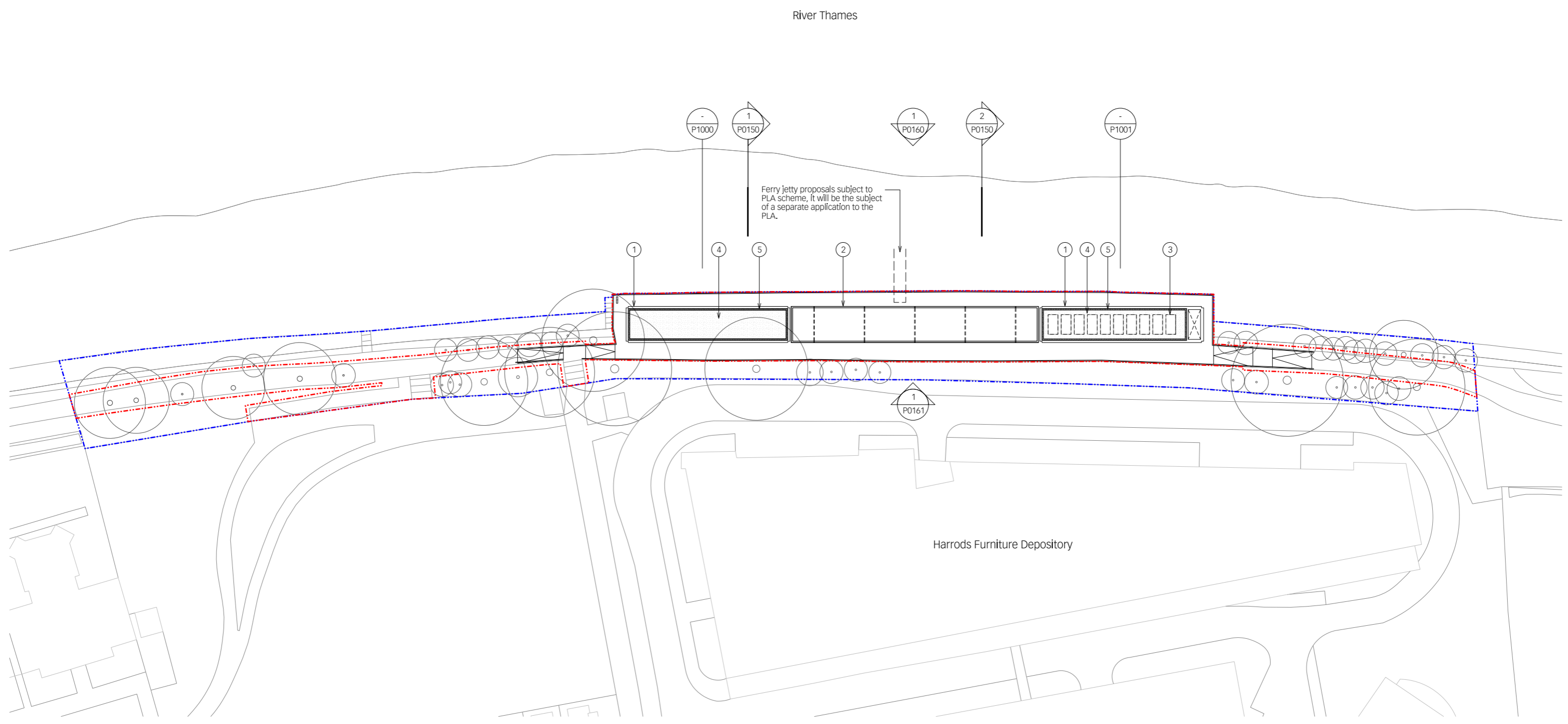


- material key:
- ① metal framed cladding panel with back-illuminated tensile fabric
 - ② metal framed canopy with back-illuminated tensile fabric
 - ③ PV panels
 - ④ green roof
 - ⑤ shingle edging



rev	date	by	revisions
A	15.01.21	PF	Access ramps updated

key plan

notes

- Ownership boundary
- Development boundary
- green roof coverage of pavilions: 74%

architect

Lifschutz Davidson Sandilands
 Island Studios, 22 St. Peter's Square, London W6 9NW T +44 (0)20 8600 4800 mail@lds-uk.com

project

client	scale at A1	scale at A3	drawn	date
Harrods Wharf	1:300	1:600	RF	11.20
Jamie Waller				
job no.	drawing	rev.		
1178	P0102	A		

0 2 4 6 8 10 20m

This drawing is the property of Lifschutz Davidson Sandilands Ltd. No disclosure or copy of it may be made without the written permission of Lifschutz Davidson Sandilands Ltd.
 LDS Standard Frame V1 - 11.10