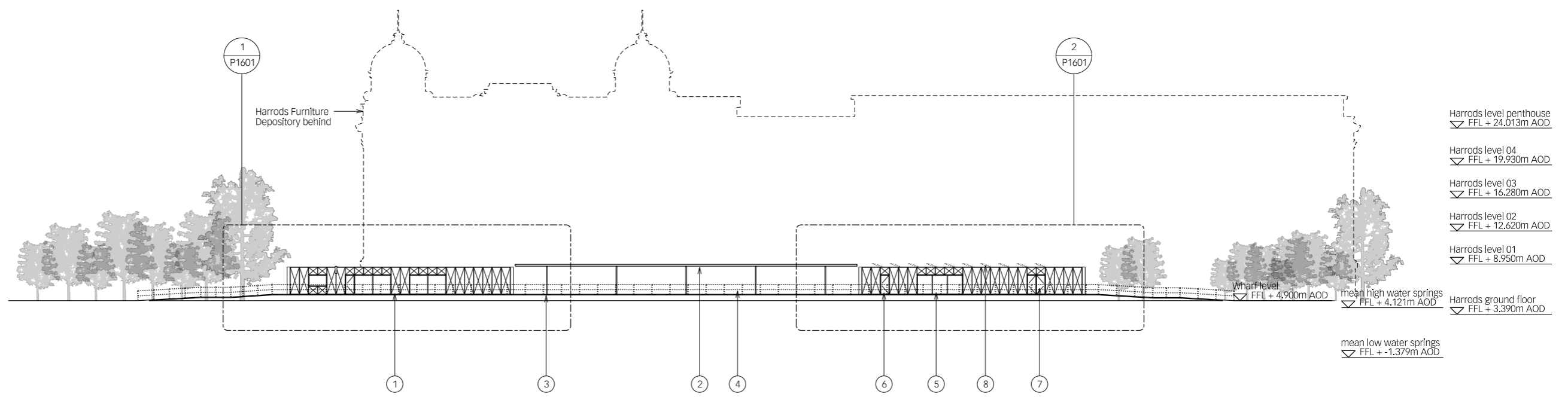
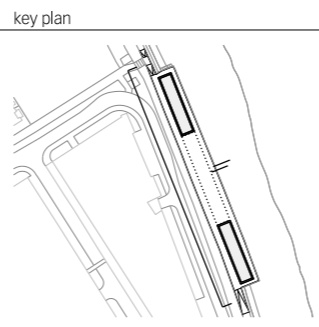


- material key:
- 1 metal framed cladding panel with back-illuminated tensile fabric
 - 2 metal framed canopy with back-illuminated tensile fabric
 - 3 recycled composite decking
 - 4 painted metal railing to match existing
 - 5 metal framed glazing
 - 6 metal framed glazed door
 - 7 metal faced door
 - 8 PV panels
 - 9 metal sheffield stand
 - 10 4m high lamp post
 - 11 low level lighting bollard



rev	date	by	revisions
A	21.12.20	PF	Deck level updated to accommodate foundations
B	15.01.21	PF	Deck level and access ramps updated
C	18.01.21	PF	Material key updated



notes

This drawing is the property of Lifschutz Davidson Sandilands Ltd. No disclosure or copy of it may be made without the written permission of Lifschutz Davidson Sandilands Ltd.
LDS Standard Frame V1 - 11.10

0 2 4 6 8 10 20m

architect

Lifschutz Davidson Sandilands
Island Studios, 22 St. Peter's Square, London W6 9NW T +44 (0)20 8600 4800 mail@lds-uk.com

project

Harrods Wharf Proposed west elevation

client	scale at A1	scale at A3	drawn	date
Jamie Waller	1:250	1:500	RF	10.20

job no.	drawing	rev.
1178	P0161	C