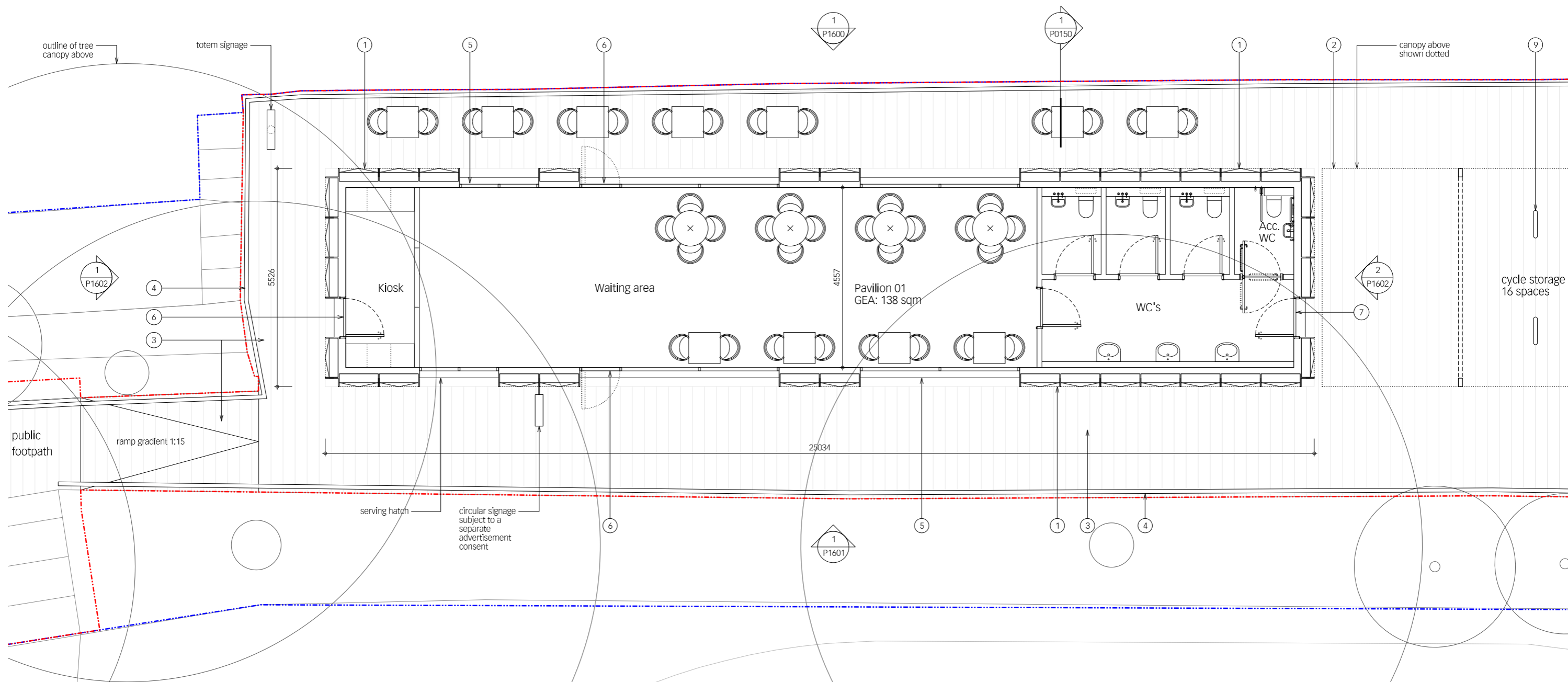


material key:

- ① metal framed cladding panel with back-illuminated tensile fabric
- ② metal framed canopy with back-illuminated tensile fabric
- ③ recycled composite decking
- ④ painted metal railing to match existing
- ⑤ metal framed glazing
- ⑥ metal framed glazed door
- ⑦ metal faced door
- ⑧ PV panels
- ⑨ metal sheffield stand
- ⑩ 4m high lamp post
- ⑪ low level lighting bollard

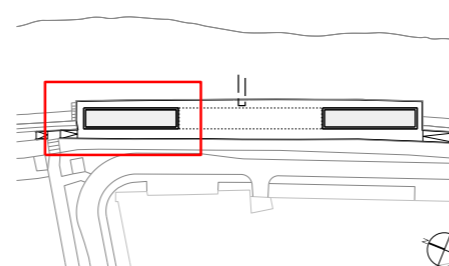
River Thames



rev date by revisions

A	21.12.20	PF	Access ramp updated
B	15.01.21	PF	Access ramp and deck level updated
C	18.01.21	PF	Material key updated
D	22.01.21	PF	Minor amendment on internal layout

key plan



notes

- Ownership boundary
- Development boundary

architect

**Lifschutz Davidson Sandilands**  
 Island Studios, 22 St. Peter's Square, London W6 9NW T +44 (0)20 8600 4800 mail@lds-uk.com

project

Harrods Wharf Proposed pavilion 01

client	scale at A1	scale at A3	drawn	date
Jamie Waller	1:50	1:100	RF	10.20

job no.	drawing	rev.
1178	P1000	D

This drawing is the property of Lifschutz Davidson Sandilands Ltd. No disclosure or copy of it may be made without the written permission of Lifschutz Davidson Sandilands Ltd.  
 LDS Standard Frame V1 - 11.10