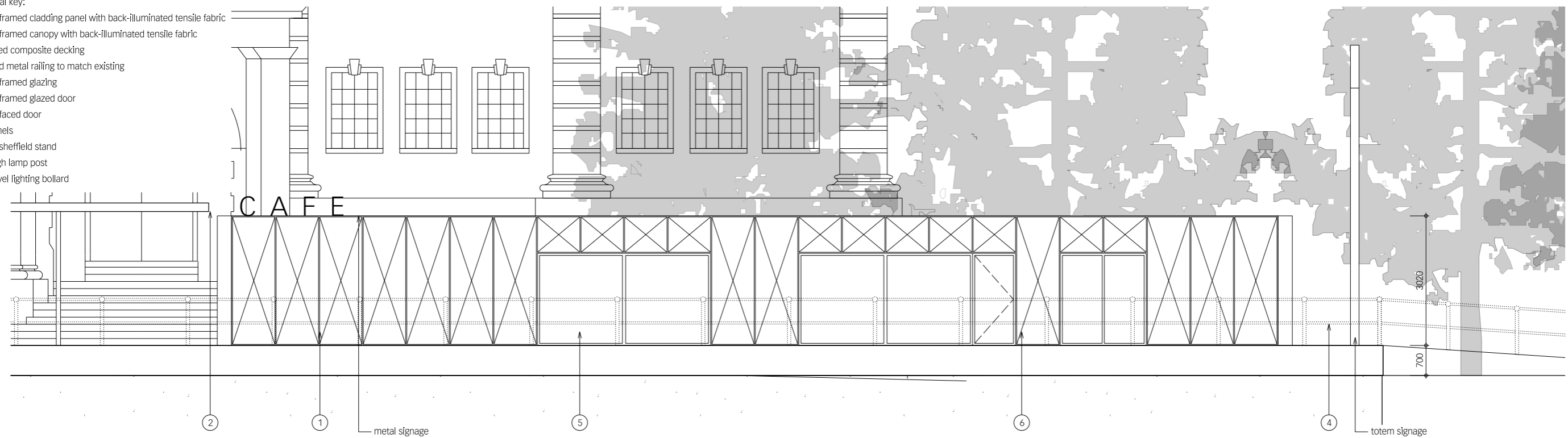
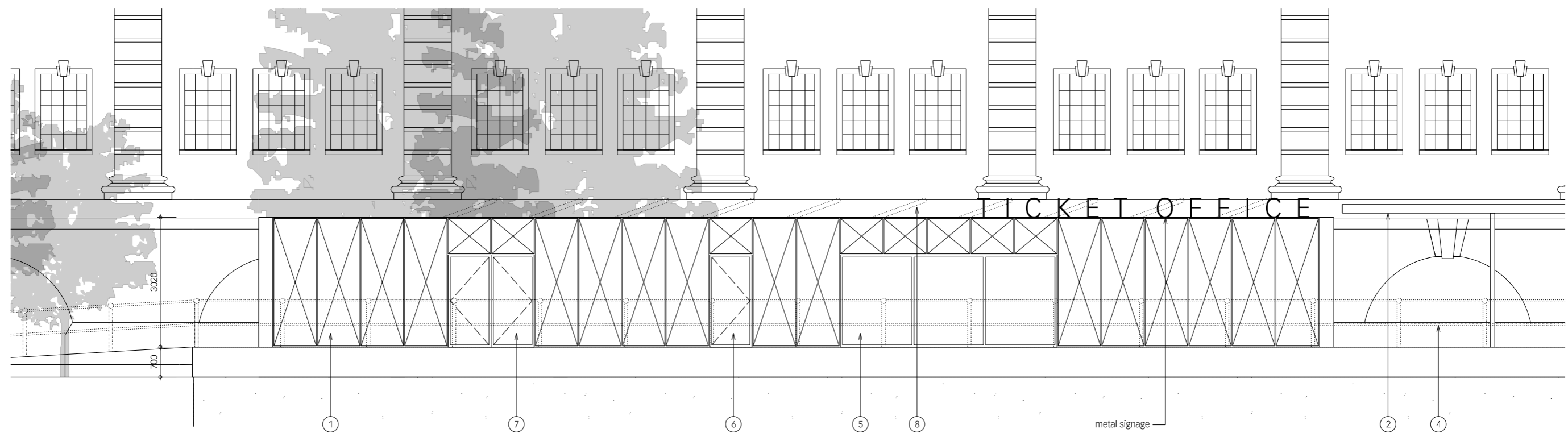


- material key:
- ① metal framed cladding panel with back-illuminated tensile fabric
 - ② metal framed canopy with back-illuminated tensile fabric
 - ③ recycled composite decking
 - ④ painted metal railing to match existing
 - ⑤ metal framed glazing
 - ⑥ metal framed glazed door
 - ⑦ metal faced door
 - ⑧ PV panels
 - ⑨ metal sheffield stand
 - ⑩ 4m high lamp post
 - ⑪ low level lighting bollard



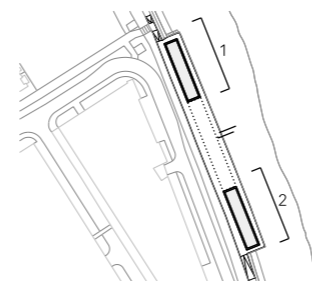
1. Pavilion 1 east elevation



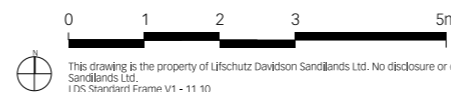
2. Pavilion 2 east elevation

rev	date	by	revisions
A	21.12.20	PF	Deck level updated to accommodate foundations
B	15.01.21	PF	Deck level and access ramps updated
C	18.01.21	PF	Material key updated

key plan



notes



architect

Lifschutz Davidson Sandilands
 Island Studios, 22 St. Peter's Square, London W6 9NW T +44 (0)20 8600 4800 mail@lds-uk.com

project

Harrods Wharf

Proposed pavilion elevations 01

client

Jamie Waller

scale at A1

1:50

scale at A3

1:100

drawn

RF

date

10.20

job no.

1178

drawing

P1600

rev.

C

This drawing is the property of Lifschutz Davidson Sandilands Ltd. No disclosure or copy of it may be made without the written permission of Lifschutz Davidson Sandilands Ltd.
 LDS Standard Frame V1 - 11.10