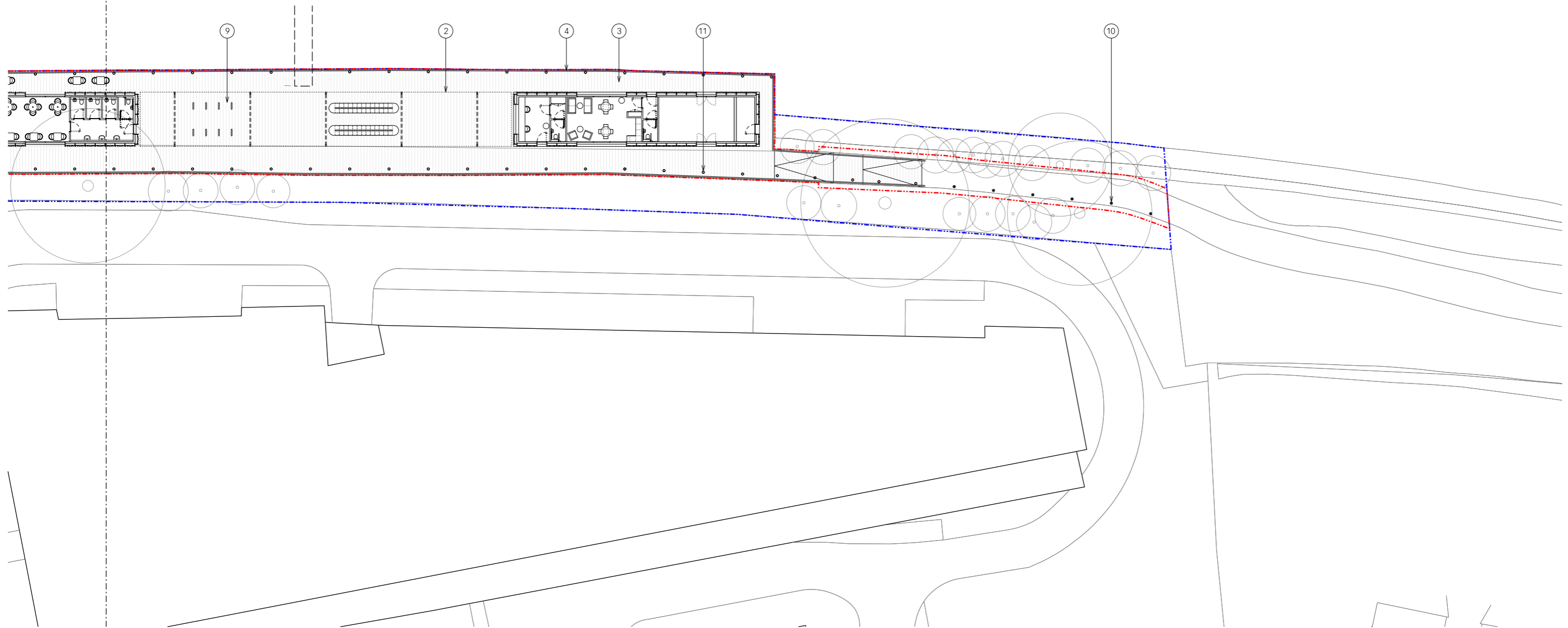


for continuation refer to P5100

- material key:
- 1 metal framed cladding panel with back-illuminated tensile fabric
 - 2 metal framed canopy with back-illuminated tensile fabric
 - 3 recycled composite decking
 - 4 painted metal railing to match existing
 - 5 metal framed glazing
 - 6 metal framed glazed door
 - 7 metal faced door
 - 8 PV panels
 - 9 metal sheffield stand
 - 10 4m high lamp post
 - 11 low level lighting bollard



rev date by revisions

A	21.12.20	PF	Access ramp updated. Plant room added. Recessed floor lighting replaced with lighting bollards. Lighting bollards to the footpath replaced with 4m high lamp posts
B	15.01.21	PF	Access ramp updated.
C	18.01.21	PF	Material key updated

key plan

notes

- Recessed spot light
- ⊗ low level bollard light
- Ownership boundary
- Development boundary

architect

Lifschutz Davidson Sandilands
 Island Studios, 22 St. Peter's Square, London W6 9NW T +44 (0)20 8600 4800 mail@lds-uk.com

project

Harrods Wharf

Proposed lighting plan 02

client

Jamie Waller

scale at A1

1:200

scale at A3

1:400

drawn

RF 10.20

job no.

1178

drawing

P5101

rev.

C



This drawing is the property of Lifschutz Davidson Sandilands Ltd. No disclosure or copy of it may be made without the written permission of Lifschutz Davidson Sandilands Ltd.
 LDS Standard Frame V1 - 11.10