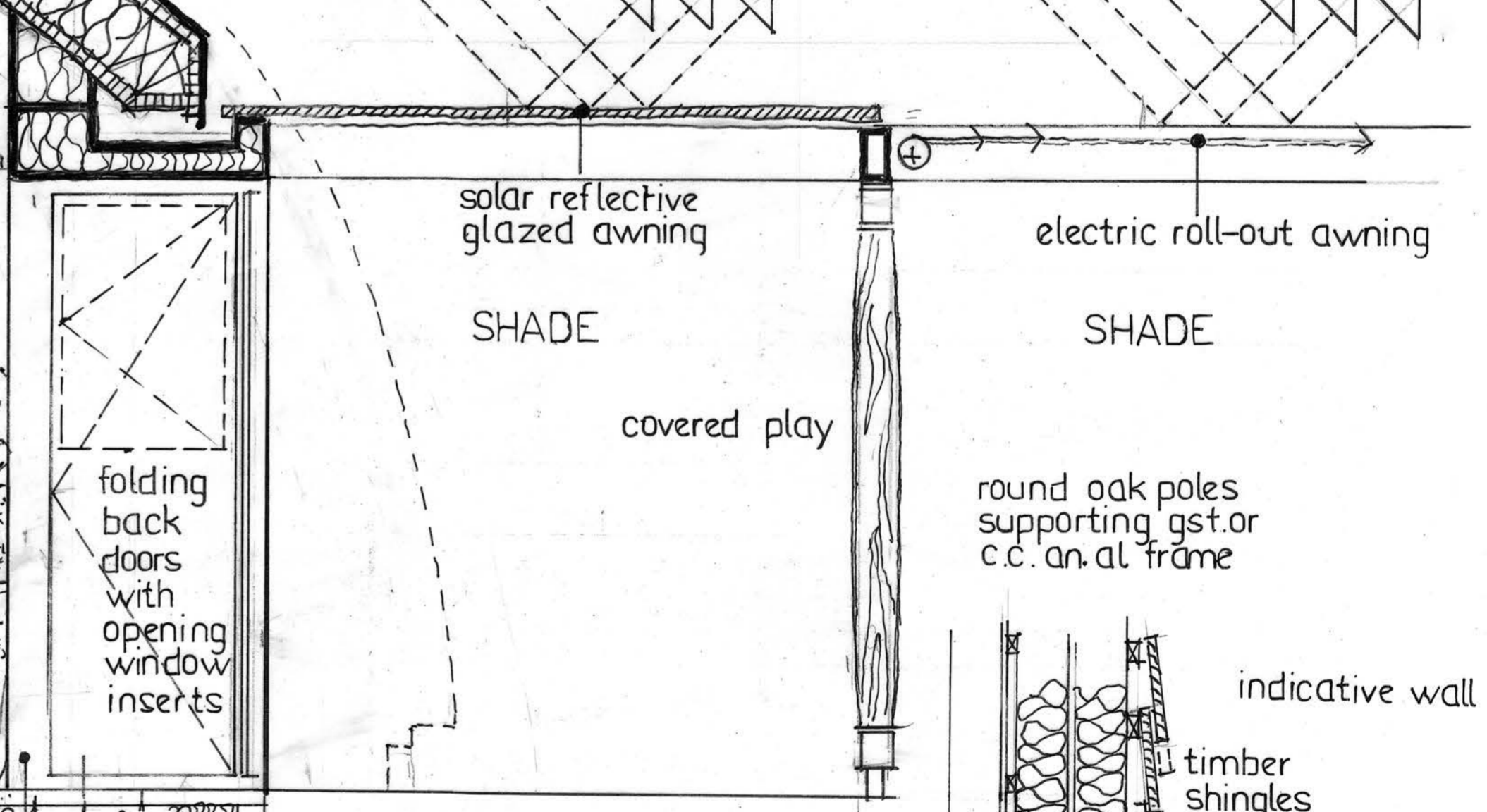
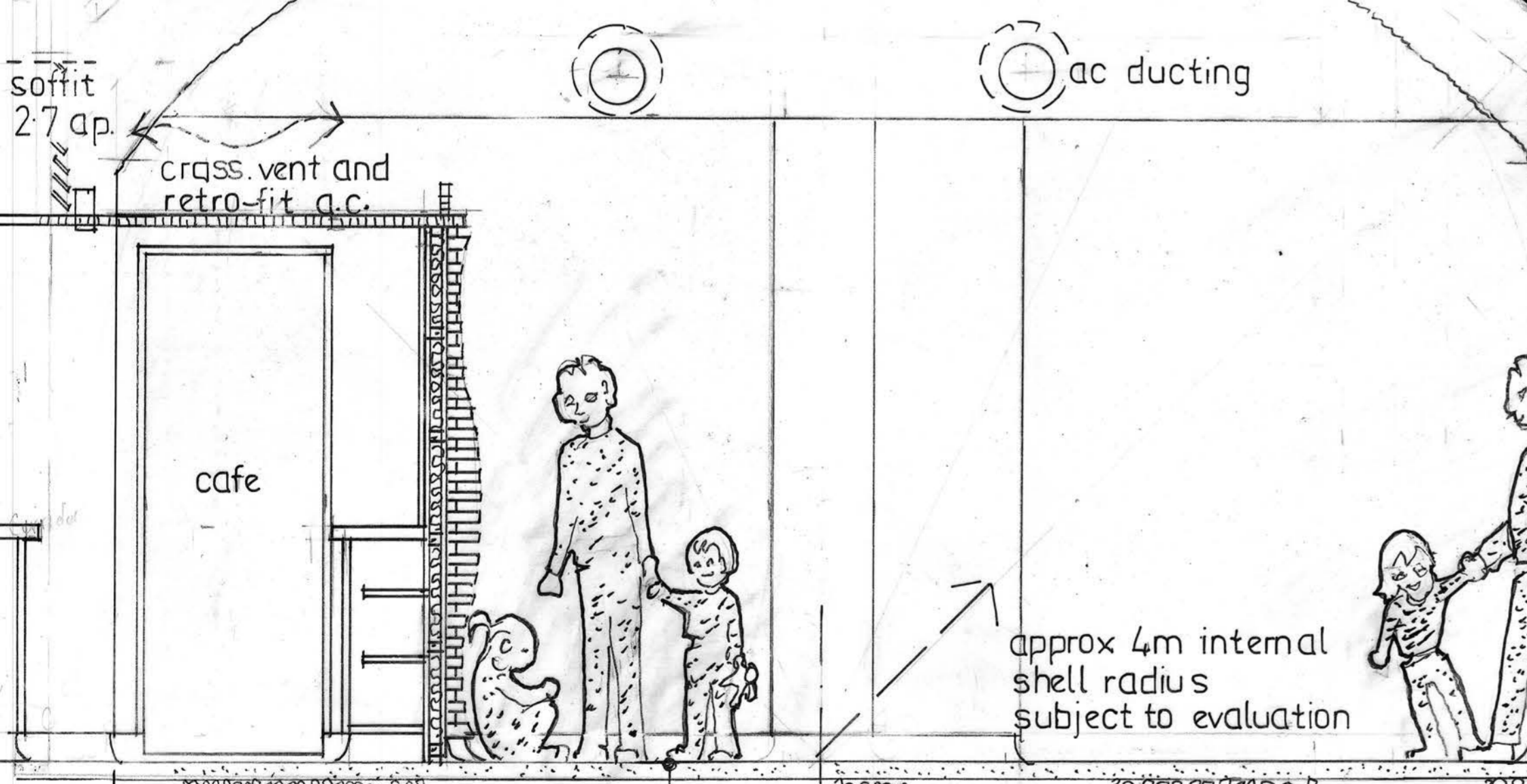
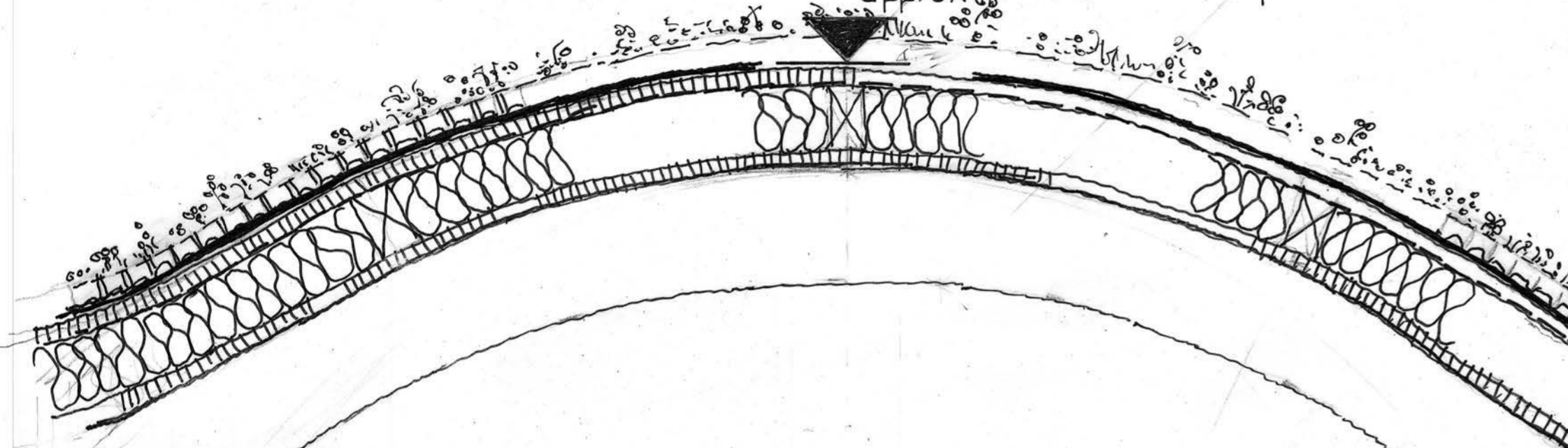
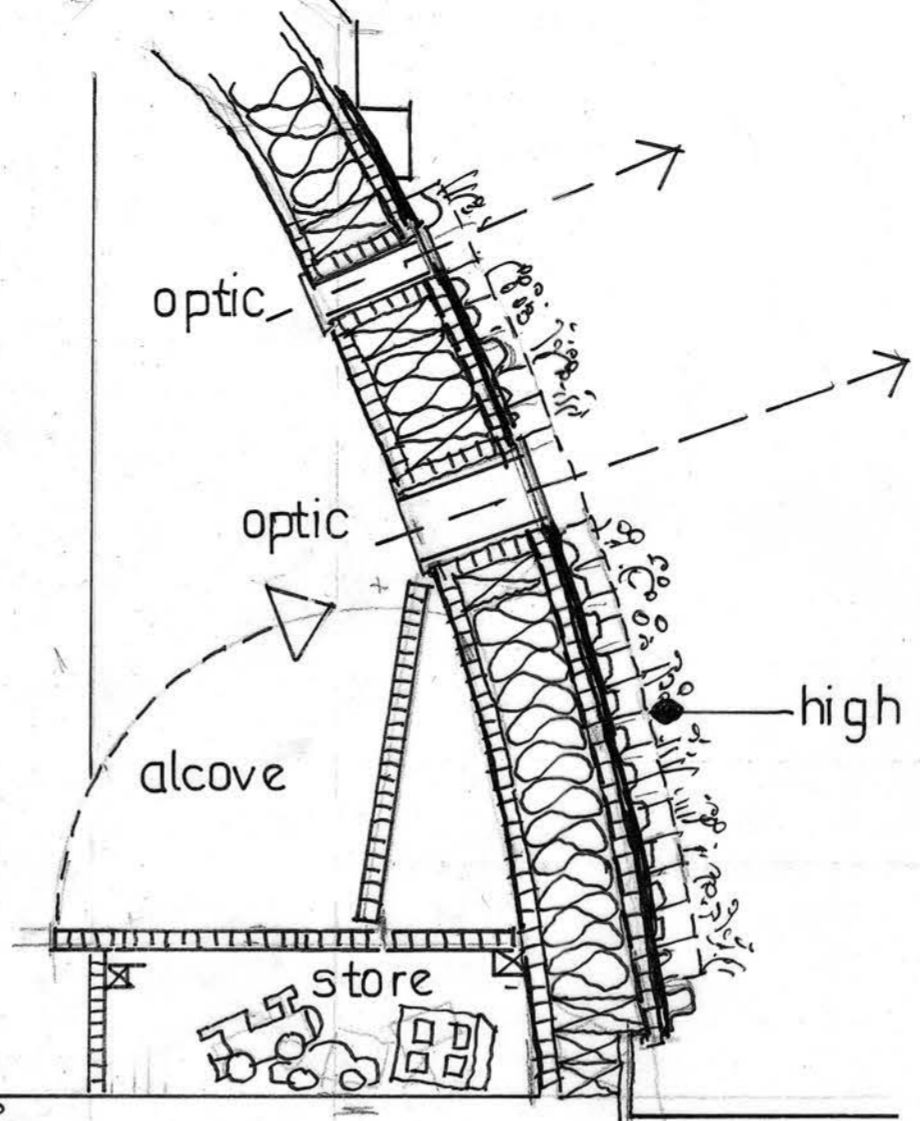


approx G+6.5 music

approx G+5.0 m.d.nursery

approx G+4.3 o.o.c/ap



approx 4m internal shell radius subject to evaluation

glulam timber frame proposed

400 mm-high insulation walls

hygienic washable heated floor

SECTIONS

MARBLE HILL PLAY CENTRE RENEWAL

MARTIN HABELL CHARTERED ARCHITECT DIP ARCH ATP RIBA FRSPH habelmartin@aol.com

REVISION A 24/12/19 FIRST FLOOR REPLANNED INTERNALLY, LIFT AMMENDED WITH SHAFT HEADROOM LIMIT SPECIFIED, STOREY HEIGHT AND RIDGES CLARIFIED, PLANT ROOM MOVED, FIRE ROUTES AMMENDED.