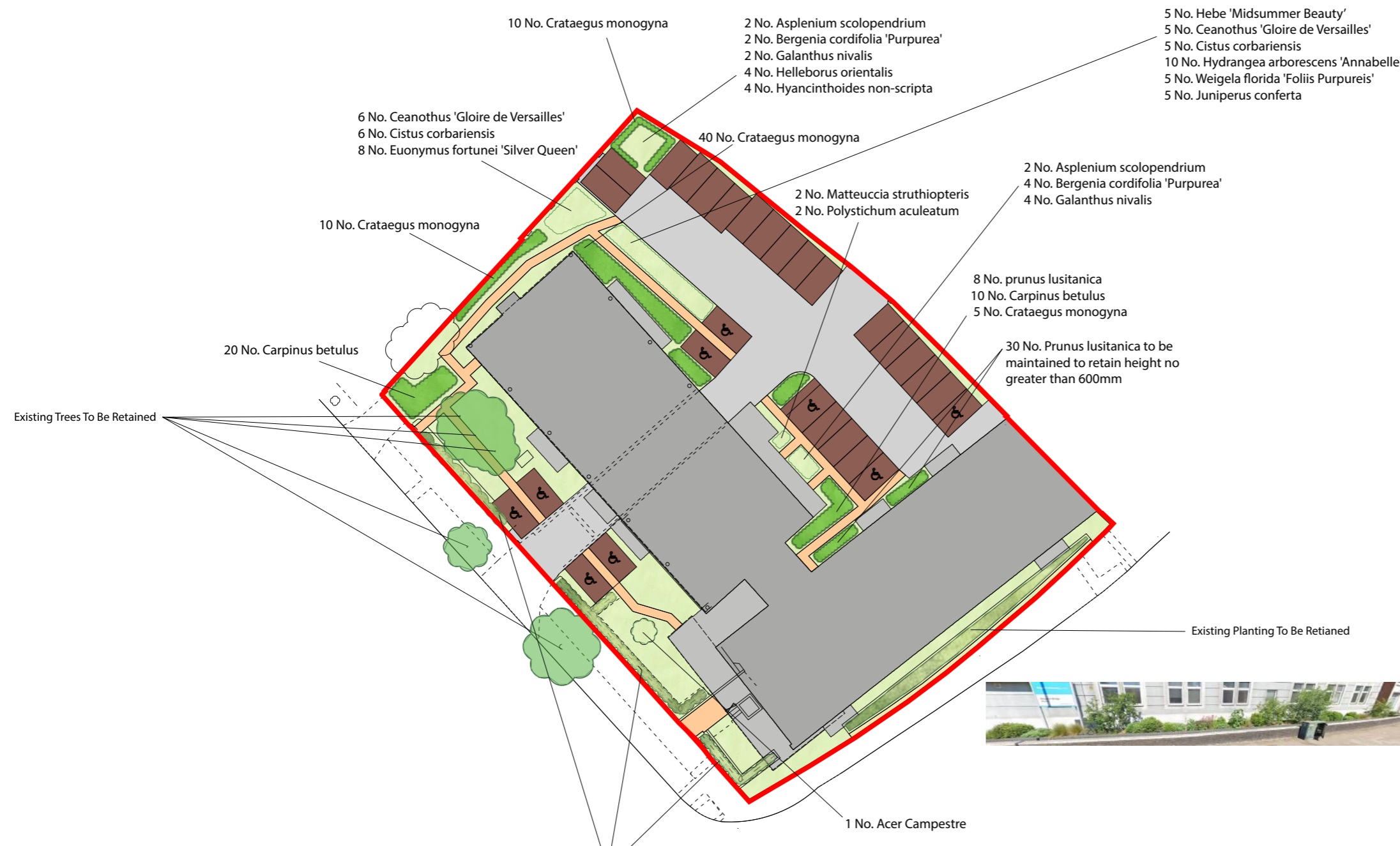


* Proposed specimen shrub planting to receive short angular staking on half standards with expandable tree ties. Irrigation tubing to root system of specimens if required.

* Proposed hedge planting to be planted in a single row at 300mm centres



KEY:

- Proposed grass areas to receive good quality amenity grass turf laid in line with good horticultural practices. Proposed grassland areas, to be seeded with Mead2 Acid Soil Wildflower seed mix and sown at 4g/m2.
- Proposed native hedge planting to be planted in a single row 300mm apart and at 300mm centres in each row. To be maintained at 1m height.
- Existing to be maintained at 2m height.
- Proposed Tree
- Marshalls - Driveline Priora Permeable Block Paving
- Permeable Block Paving
- Existing Tarmac

LANDSCAPE PLAN

Kingston Bridge House
Church Grove, Hampton Wick

Proposed Site Plan

Scale: 1:500 @ A3

Dwg No.

Date

Rev



- All existing treesto be protected in accordance with BS5837:2012 for the duration of the construction period.
- All native species should be of local stock. Native trees and shrubs certi ed as British Native plant stock.
- All planting stock should comply with the Horticultural Trade Association National Plant speci cation.
- All planting preparation, handling, planting & maintenance should be in accordance with CPSE Code for Handling and Establishing plants.
- All trees and shrubs to comply with BS 3936 Part 1 1992, planted to BS 4043:1989 and BS 4428:1989.
- All works generally, to comply with the written Soft Landscape Speci cation.
- Imported topsoil shall be a minimum speci cation to current British Standard Multi-purpose grade from an approved source in accordance to the above speci cation.
- All existing/ proposed hedge and native planting shall be mulched with 75mm of medium textured decorative grade natural pine bark

Trees	HEIGHT	DENSITY	SPEC	NUMBER
Acer campestre	60-80cm	0.3Ctr Double Staggered at 0.3m offset	Transplant :BR :Plant and maintain as hedge	1
Crataegus monogyna	60-80cm	0.3Ctr Double Staggered at 0.3m offset	Transplant :BR :Plant and maintain as hedge	50
Prunus Lusitanica	60-80cm	0.3Ctr	Feather :Bushy :1/3 brks :BR :Planted and maintained as hedge	38

Shrubs	HEIGHT	POT SIZE	SPEC	DENSITY	NUMBER
Ceanothus 'Gloire de Versailles'	40-60cm	3L	Leader With Laterals :3 brks :C	2/m ²	11
Cistus corbariensis	30-40cm	3L	Bushy :4 brks :C	2/m ²	11
Euonymus fortunei 'Silver Queen'	30-40cm	3L	Bushy :7 brks :C	2/m ²	8
Hebe 'Midsummer Beauty'	30-40cm	3L	Bushy :5 brks :C	2/m ²	5
Hydrangea arborescens 'Annabelle'	40-60cm	3L	Branched :3 brks :C	2/m ²	10
Weigela florida 'Foliis Purpureis'	40-60cm	3L	Branched :4 brks :C	2/m ²	5
Juniperus conferta	20-30cm	10L	Feather :Bushy	Counted	5

Ferns	POT SIZE	SPEC	DENSITY	NUMBER
Asplenium scolopendrium	5-7.5L	Full Pot	5/m ²	4
Matteuccia struthiopteris	5-7.5L	Full Pot	5/m ²	2
Polystichum aculeatum	Polystichum aculeatum	Full Pot	Full Pot	2

Herbaceous	POT SIZE	SPEC	DENSITY	NUMBER
Bergenia cordifolia 'Purpurea'	3L	Full Pot	5/m ²	6
Helleborus orientalis	3L	Full Pot	5/m ²	4

Bulbs	SPEC	DENSITY	NUMBER
Galanthus nivalis	Plant in groups of 3-5	5/m ²	15
Hyacinthoides non-scripta	Plant in groups of 3-5	5/m ²	15