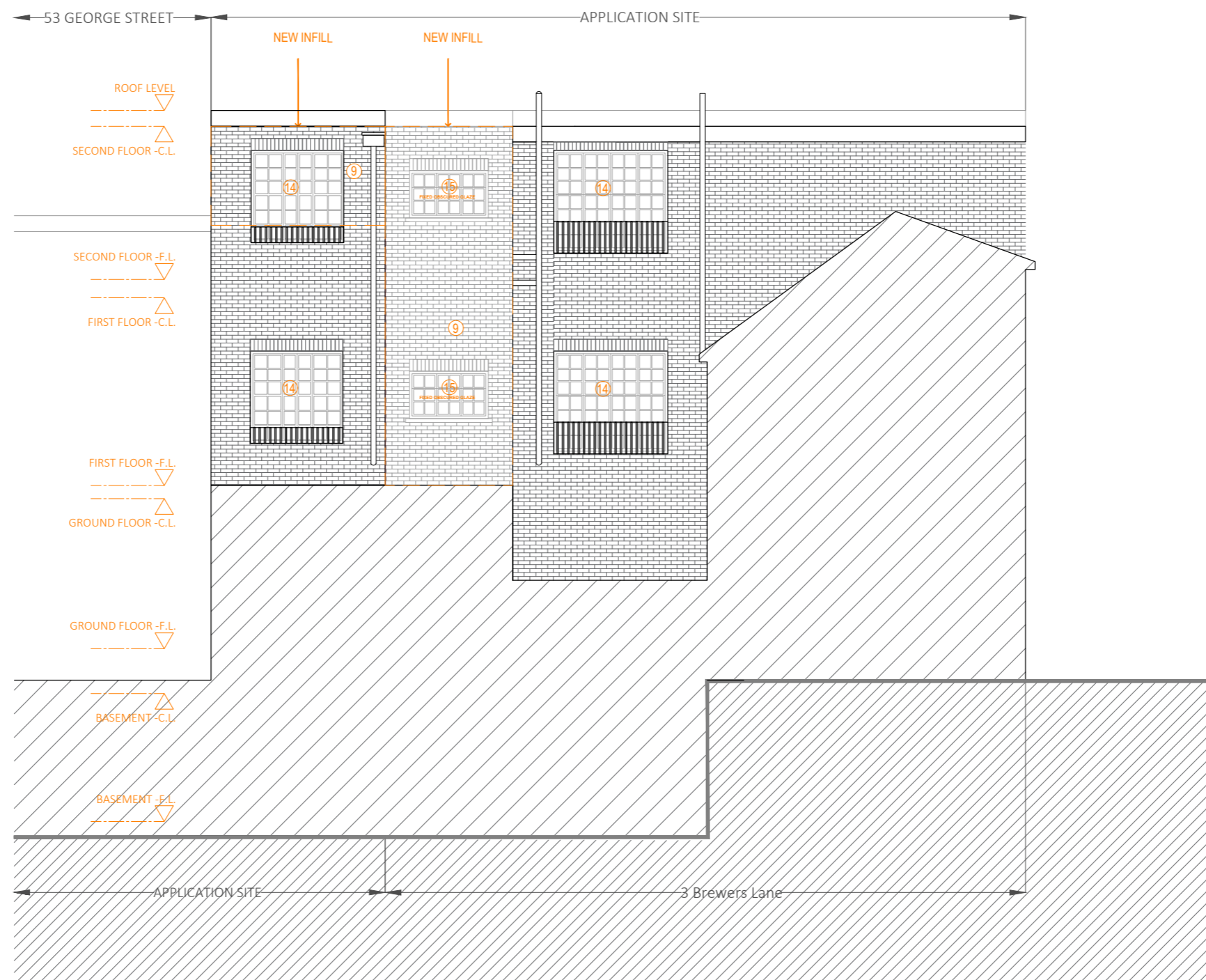


NOTES

Drawings for sketch purposes only and not for construction.



- ⑨ NEW BRICKS to match the existing
- ⑭ NEW WINTER GARDEN BEHIND NEW WINDOW WITH BESPOKE DOUBLE GLAZED TIMBER SASH WINDOW
- ⑮ NEW DOUBLE GLAZED TIMBER SASH WINDOW
to match the style of the original windows highlighted by the unchanged front elevation. Timber frames are to be rebated in order to accommodate double glazed panes in order to meet current sound and thermal requirements by modern building regulations. Obscured and fixed glaze

This drawing is copyright USL Architects.

ARCHITECTS
 Ground floor
 7 Progress Business Centre
 Whittle Parkway
 Burnham SL1 6DQ
 England
 usl@uslarchitects.co.uk

Job No.	20/GSR
Date	23/04/2021

Job
GEORGE STREET RICHMOND
 53-54 GEORGE STREET,
 RICHMOND, SURREY
 TW9 1HJ

Drawing
 PROPOSED NORTH/WEST
 ELEVATION (REAR)

Drawing No.	GSR/PL/202
Dm	CDG
Chk	BK

Revision	
----------	--

