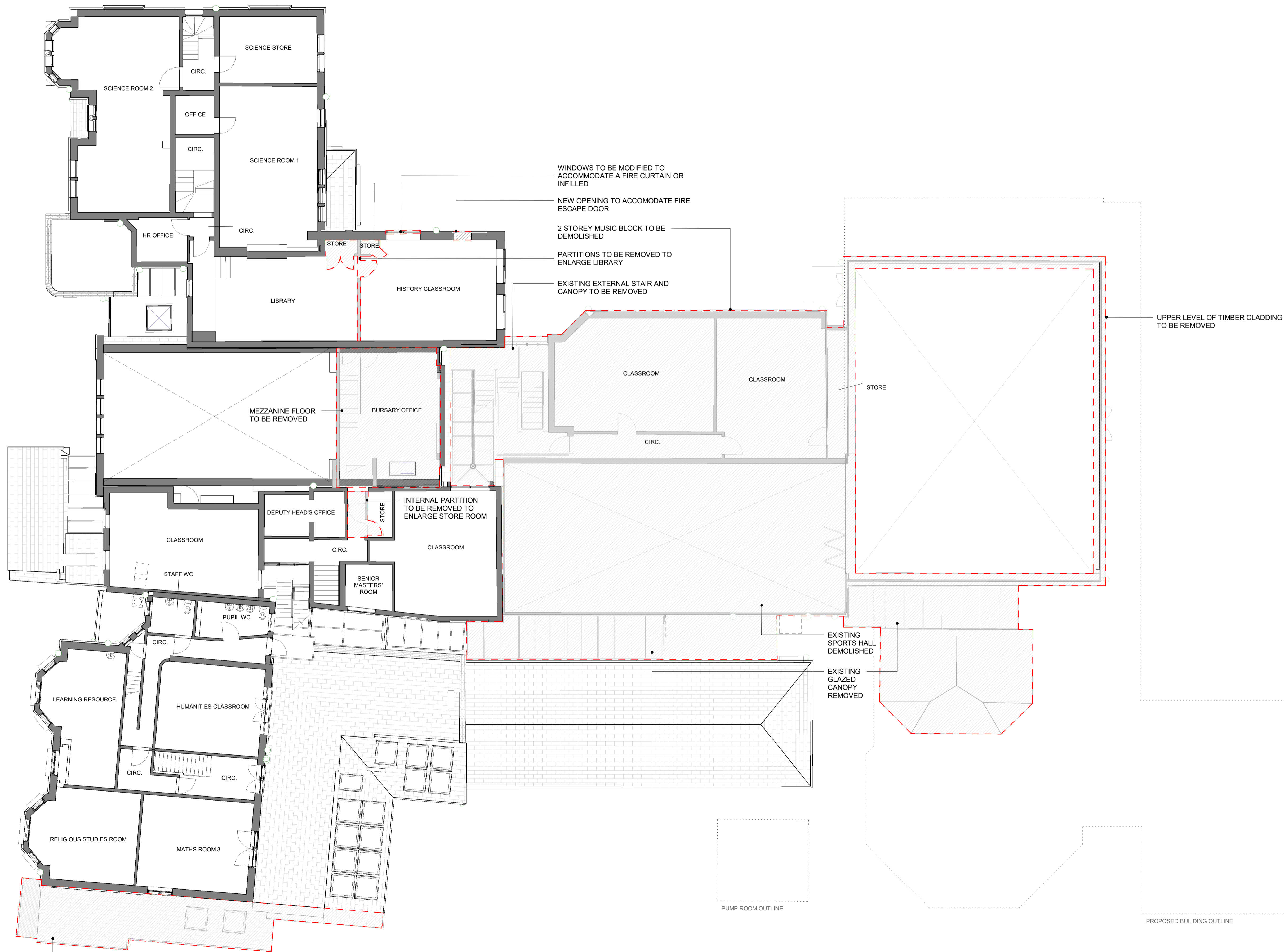


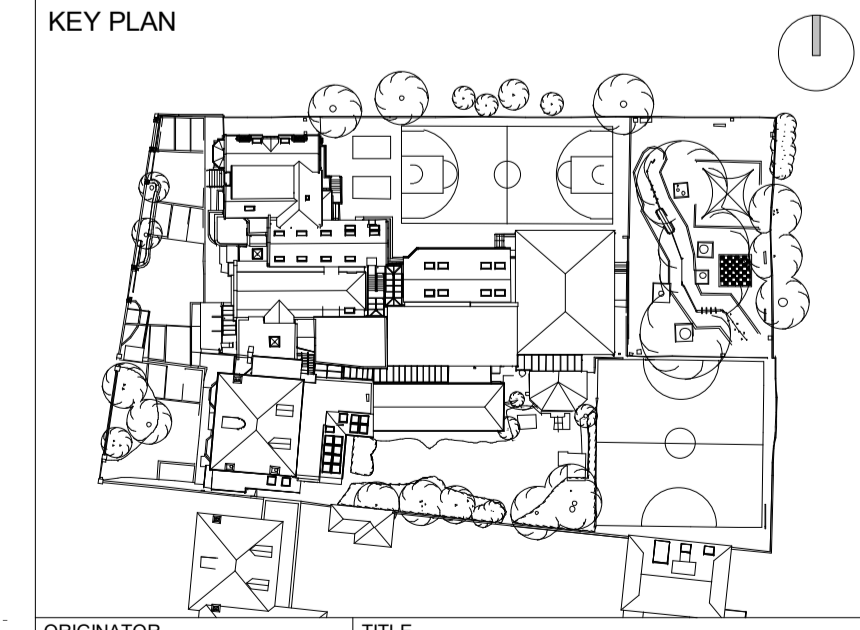
| REVISION DETAILS | | DATE | DRAWN BY |
|------------------|--------------------------------|----------|----------|
| P 1 | UPDATED TO REVISED PHASING | 19.02.19 | DMA |
| P 2 | UPDATED DEMOLITION AREAS | 19.04.19 | DMA |
| P 3 | S2 ISSUE FOLLOWING VE EXERCISE | 27.09.19 | DMA |
| P 4 | ADDITIONAL DEMOLITION TO NO 63 | 30.09.19 | DMA |
| P 5 | ISSUE FOR PLANNING | 17.01.20 | DMA |
| P 6 | STAGE 3 ISSUE POST PLANNING | 14.02.20 | DMA |
| P 7 | PLANNING ISSUE | 16.03.21 | DMA |



KEY:
 TO BE DEMOLISHED

0m 1m 2m 3m 4m 5m 6m 7m 8m 9m 10m

KEY RESIDUAL RISK



| | |
|--|-------------------------------------|
| ORIGINATOR DMA | TITLE DEMOLITION PLAN - LEVEL 01 |
| PROJECT KING'S HOUSE SCHOOL 48 KING'S ROAD RICHMOND TW10 6ES | PURPOSE OF ISSUE FOR INFORMATION |
| JOB NO. 515 | SCALE 1:100 @A1 |
| DRAWN KvdS | CHECKED DMA |
| PROJECT KHS | ORIGINATOR DMA |
| VOLUME XX | LEVEL 01 |
| TYPE DR | ROLE A |
| STATUS S2 | REVISION P7 |
| APPROVED DMA | DOC NO 02603 |

DEMOLITION OF SIDE
EXTENSION FOR SITE
ACCESS