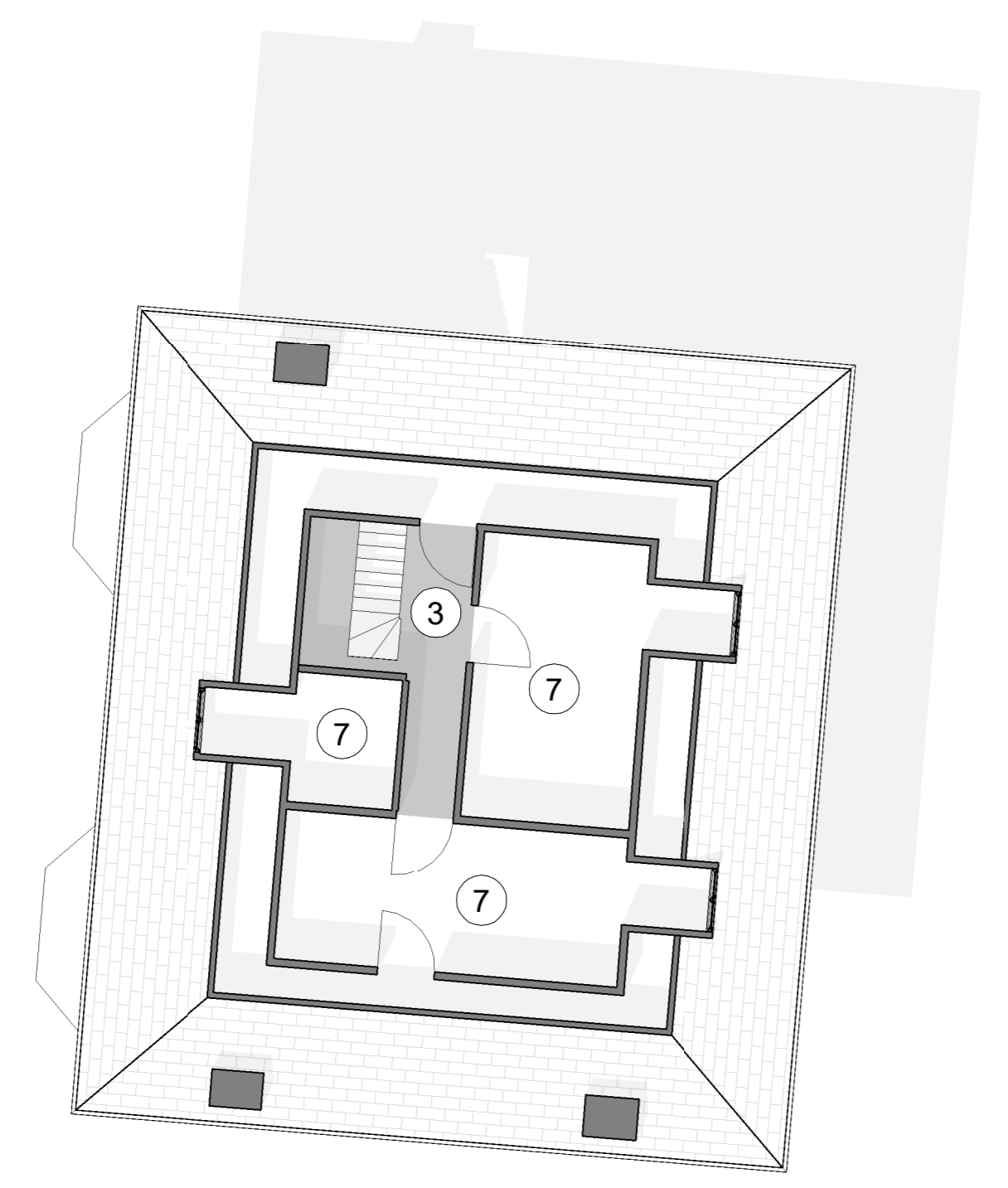
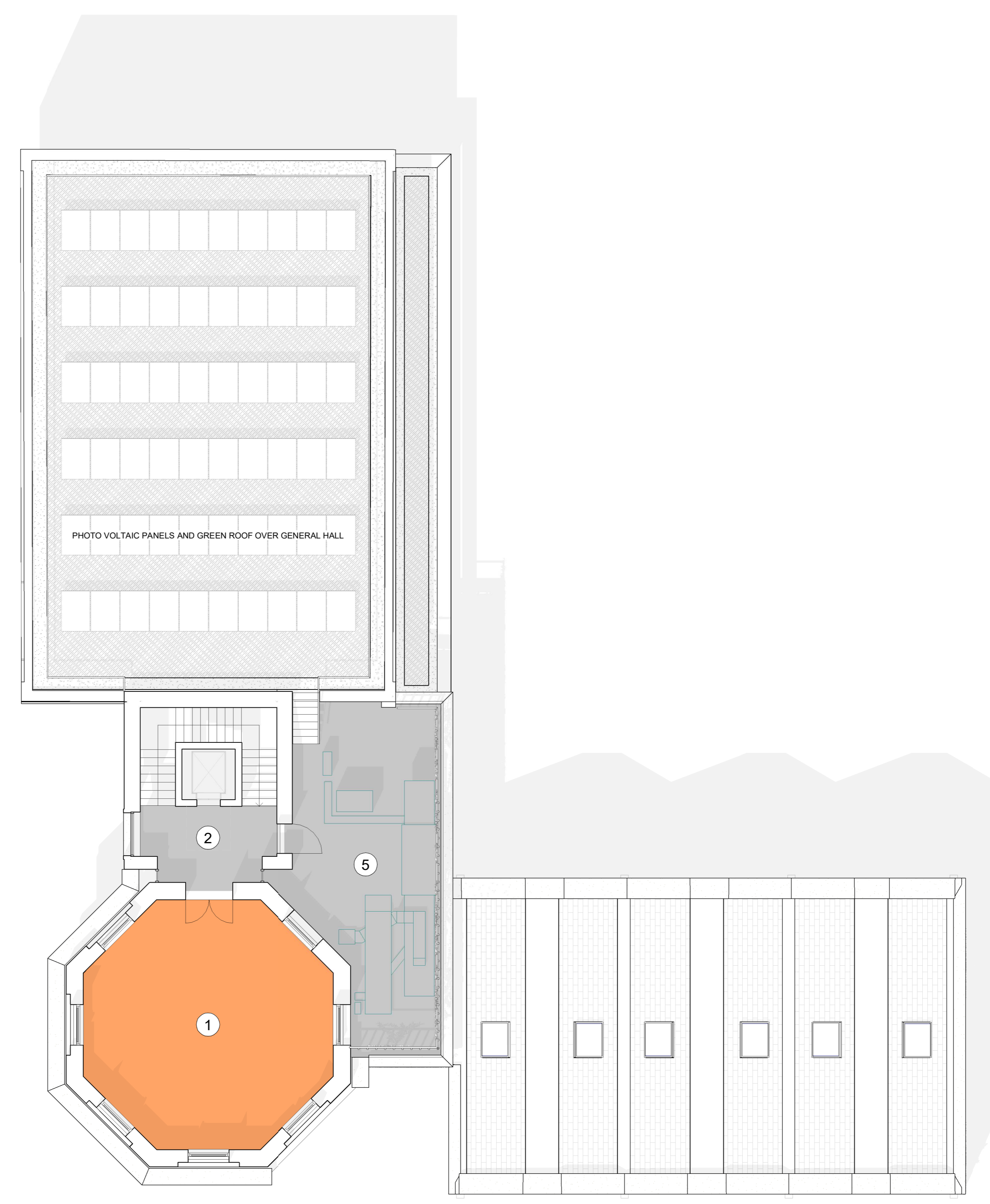
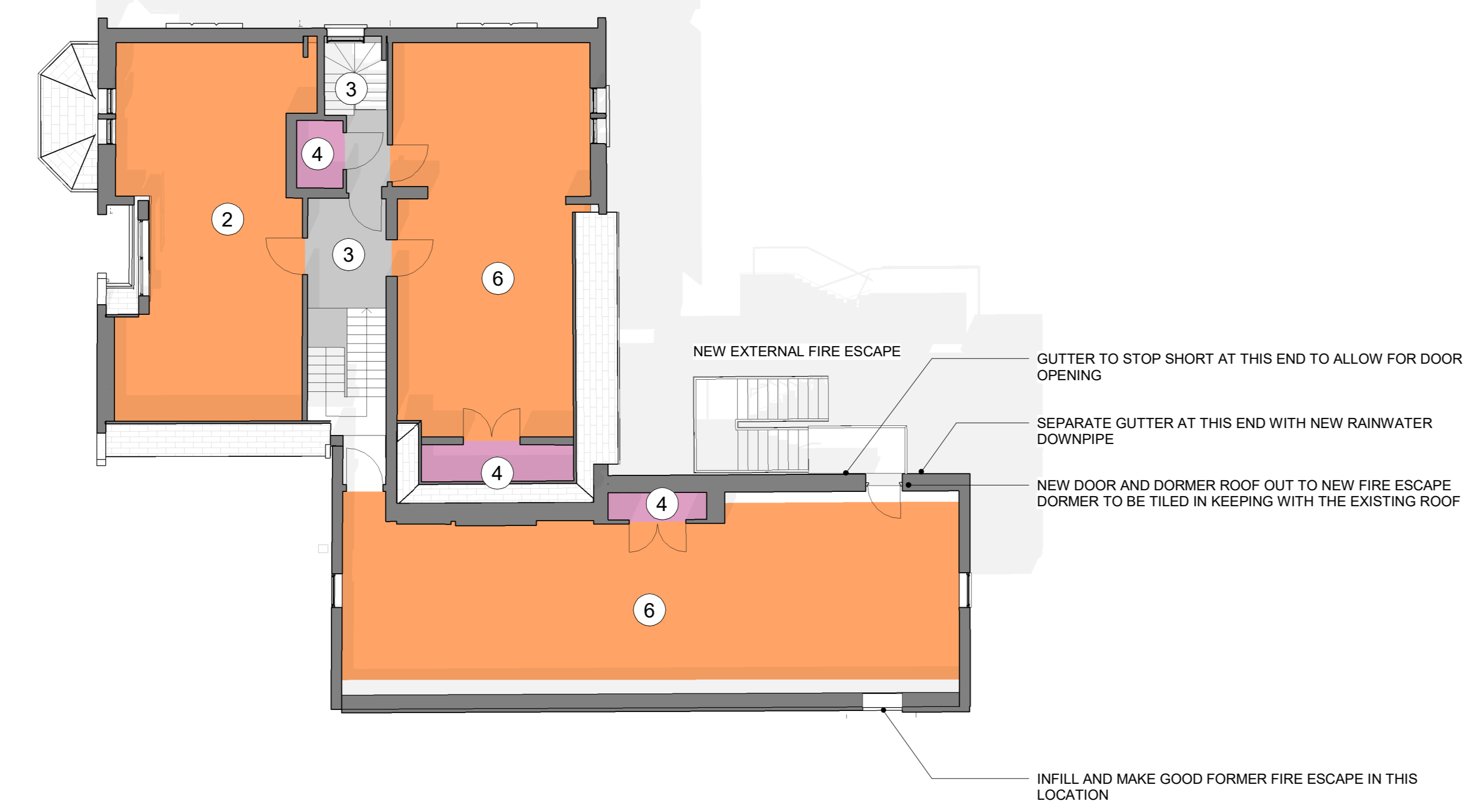


CHARMOUTH COURT

NO	REVISION DETAILS	DATE	DRAWN BY
P 1	FIRST ISSUE	14.12.18	DMA
P 2	UPDATED LAYOUTS	05.04.19	DMA
P 3	UPDATED MULTIPURPOSE HALL	19.06.19	DMA
P 4	UPDATED PROPOSED LAYOUT	19.07.19	DMA
P 5	UPDATED LAYOUTS	19.08.19	DMA
P 6	UPDATED LAYOUTS	19.08.19	DMA
P 7	SI ISSUE FOLLOWING VE EXERCISE	27.09.19	DMA
P 8	SI ISSUE FOR PLANNING	17.01.20	DMA
P 9	STAGE 3 ISSUE POST PLANNING	14.02.20	DMA
P 10	UPDATED LAYOUTS FOR COORDINATION	24.08.20	DMA
P 11	UPDATED DRAWINGS TO LUC	08.01.21	DMA
P 12	REVISED PLANS TO LUC	26.01.21	DMA
P 13	PLANS TO HSE	04.02.21	DMA
P 14	PLANNING ISSUE	18.03.21	DMA



- ROOM TYPE KEY:**
- 1 MUSIC PERFORMANCE SPACE
  - 2 GENERAL TEACHING
  - 3 CIRCULATION
  - 4 STORAGE
  - 5 EXTERNAL PLANT
  - 6 ART / DT CLASSROOM
  - 7 RESIDENTIAL ACCOMMODATION

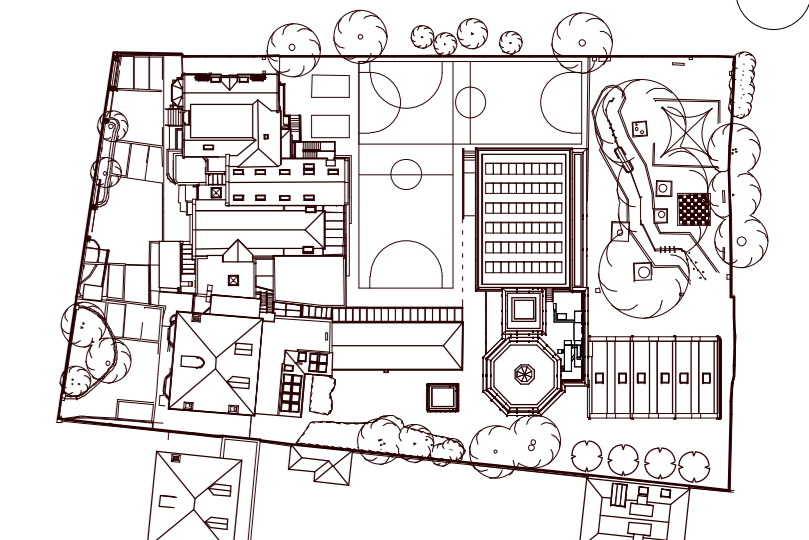
- KEY:**
- EXISTING WALLS
  - PROPOSED WALLS

- DEPARTMENT COLOURS**
- GENERAL TEACHING
  - LARGE SPACES
  - LEARNING RESOURCE
  - STAFF AND ADMINISTRATION
  - STORAGE
  - NON-NET



KEY RESIDUAL RISK

KEY PLAN



ORIGINATOR: DMA  
TITLE: PROPOSED - SECOND FLOOR PLAN

PROJECT	PURPOSE OF ISSUE	STATUS	REVISION			
KING'S HOUSE	FOR INFORMATION	SZ	P14			
SCHOOL, 68 KING'S ROAD, BIRMINGHAM	SCALE	DRAWN	CHECKED/ APPROVED			
FW10-483	515	KwS	DMA			
PROJECT	ORIGINATOR	VOLUME	LEVEL	TYPE	ROLE	DOC NO
KHS	DMA	XX	02	DR	A	0320A