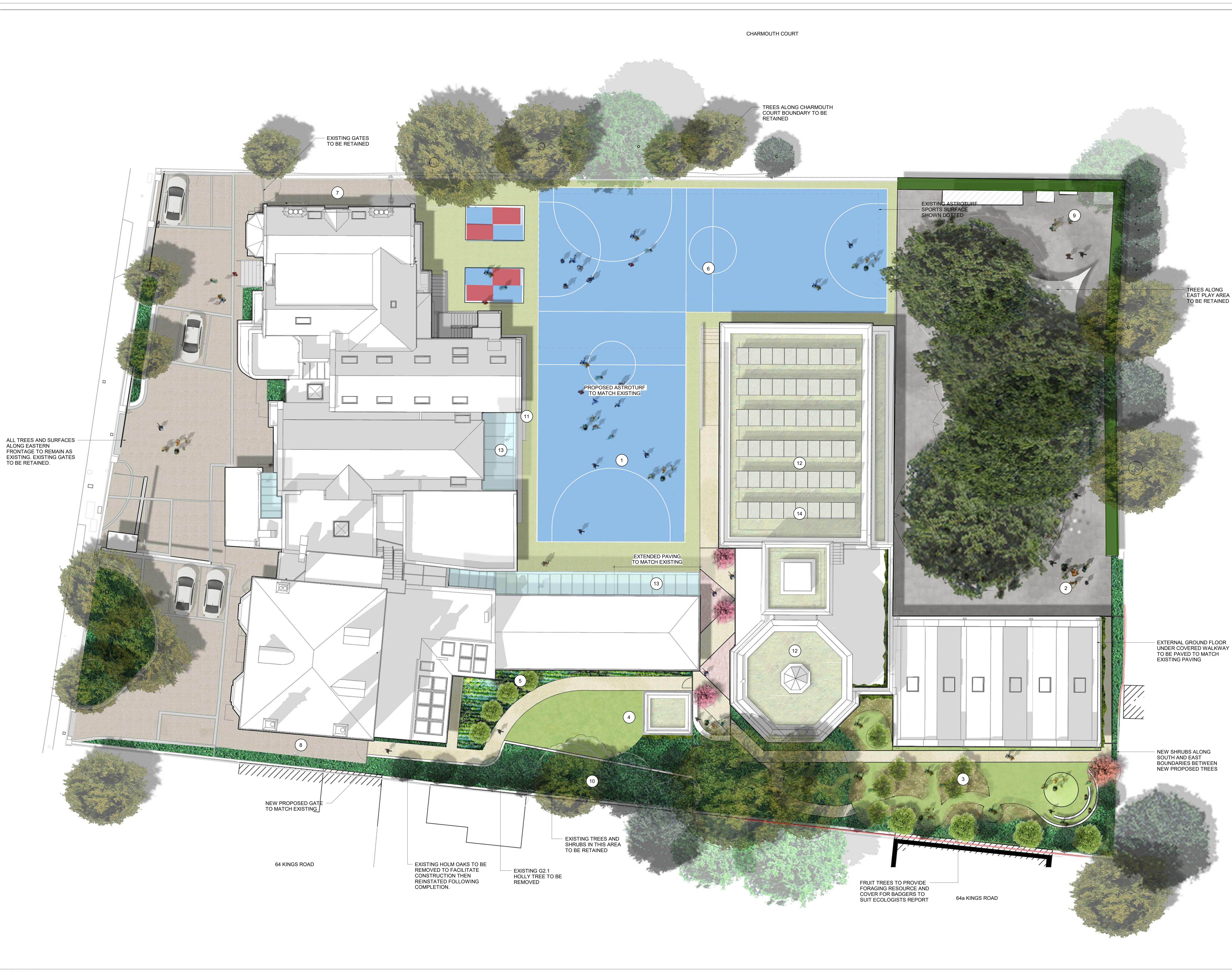


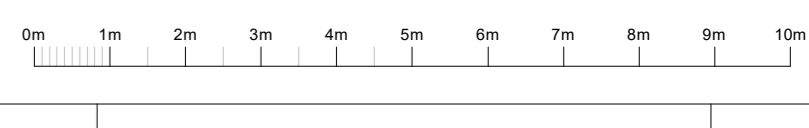
REVISION	DATE	DRAWN BY
P 1	17.01.20	DMA
P 2	08.04.20	DMA
P 3	16.03.21	DMA
P 4	26.04.21	DMA

CHARMOUTH COURT



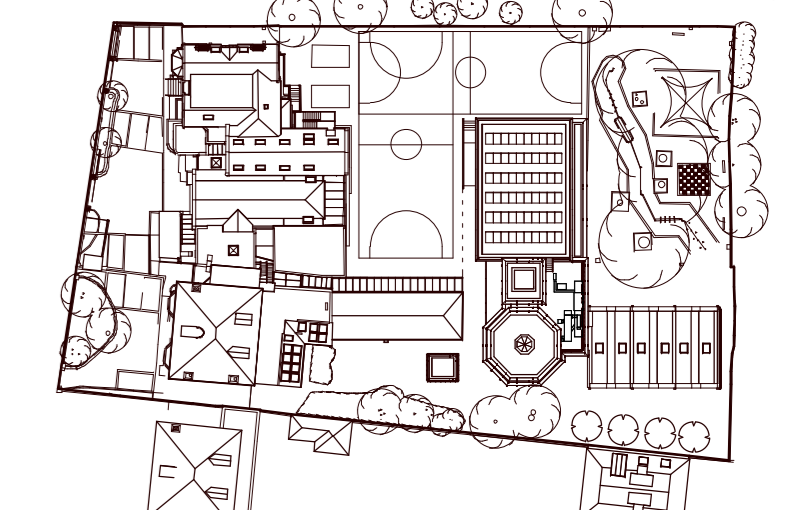
ALL TREES AND SURFACES ALONG EASTERN FRONTAGE TO REMAIN AS EXISTING. EXISTING GATES TO BE RETAINED.

- KEY**
- 1 PROPOSED EXTERNAL P.E. / PLAYSPACE WITH RUBBERISED SURFACE
 - 2 EXTENDED PLAY AREA WITH RUBBERISED SURFACE TO MATCH EXISTING
 - 3 OUTDOOR LEARNING AREA WITH GRASS SURFACE
 - 4 EXISTING GARDEN AREA RETAINED WITH GRASS SURFACE
 - 5 HEDGE PLANTING AS EXISTING
 - 6 EXISTING PLAY SPACE RETAINED WITH MUGA SURFACE
 - 7 TARMAC SURFACE AS EXISTING
 - 8 NEW PAVED SURFACE TO MATCH EXISTING FOLLOWING DEMOLITION OF EXISTING STRUCTURE
 - 9 EXISTING PLAY AREA SURFACE RETAINED
 - 10 EXISTING TREES AND PLANTING RETAINED IN THIS AREA
 - 11 EXISTING EXTERNAL STEPS MODIFIED, FINISH TO MATCH EXISTING
 - 12 GREEN ROOFS
 - 13 PAVED HARD LANDSCAPE FINISH TO MATCH EXISTING
 - 14 PHOTOVOLTAIC PANELS



KEY RESIDUAL RISK

KEY PLAN



ORIGINATOR	TITLE	STATUS	REVISION
DMA	SITE PLAN - LANDSCAPING	S2	P4

PROJECT	PURPOSE OF REVISION	STATUS	REVISION
KHS HOUSE SCHOOL 64 KINGS ROAD REMOVED	FOR INFORMATION	S2	P4
JOB NO	SCALE	DRAWN	CHECKED/ APPROVED
515	1:100 64a	MF	TE DMA

PROJECT	ORIGINATOR	VOLUME	LEVEL	TYPE	ROLE	DOC NO
KHS	DMA	XX	GF	DR	A	02152