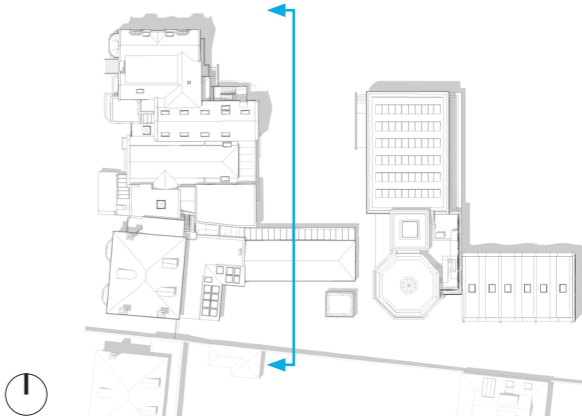




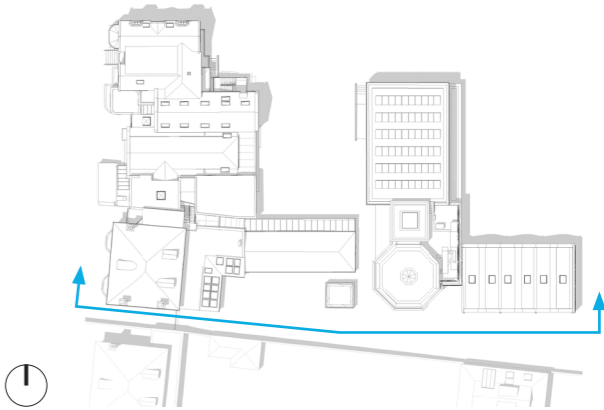
EAST ELEVATION FROM QUAD
View towards refurbished Dining Hall





SOUTH FACING ELEVATION FROM BOUNDARY
View of the new classroom block

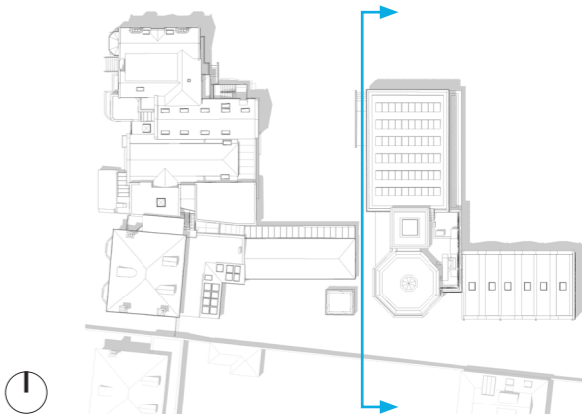
..... Outline of previous application

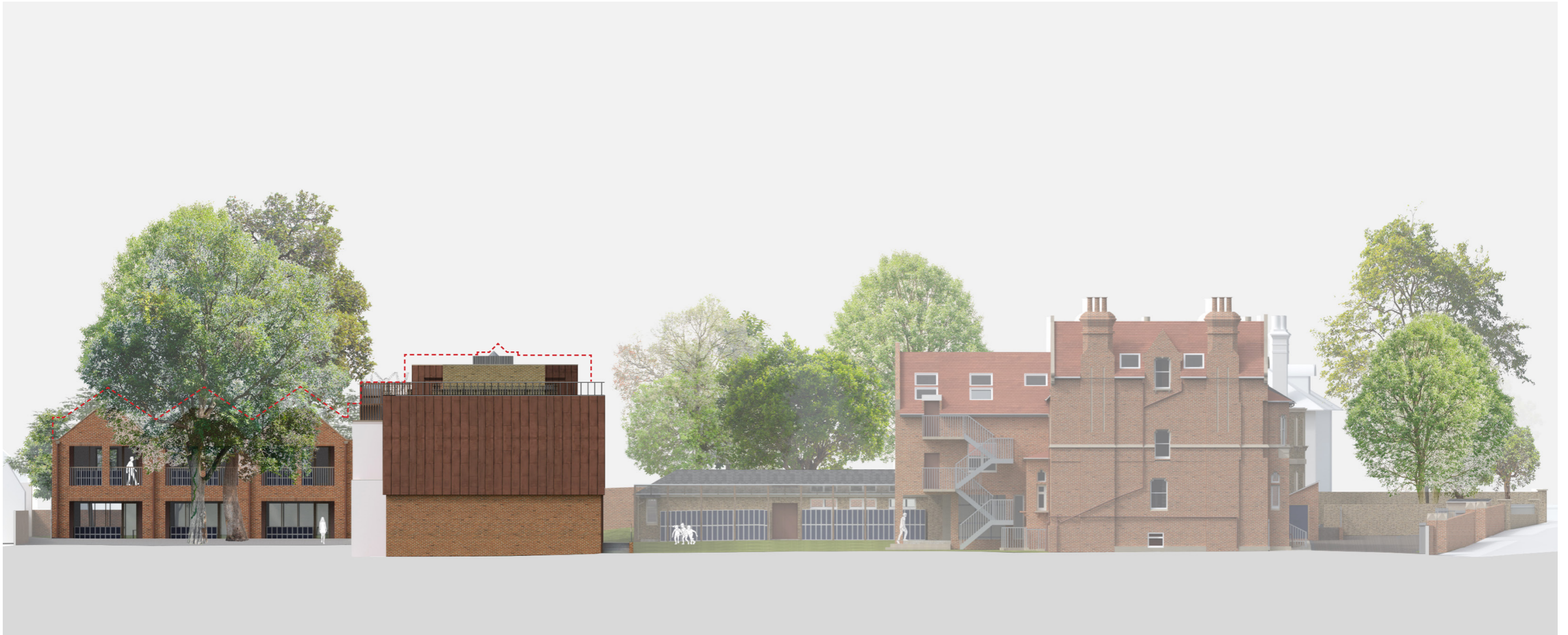




WEST FACING ELEVATION FROM QUAD
View towards the extended hall and new teaching block

..... Outline of previous application

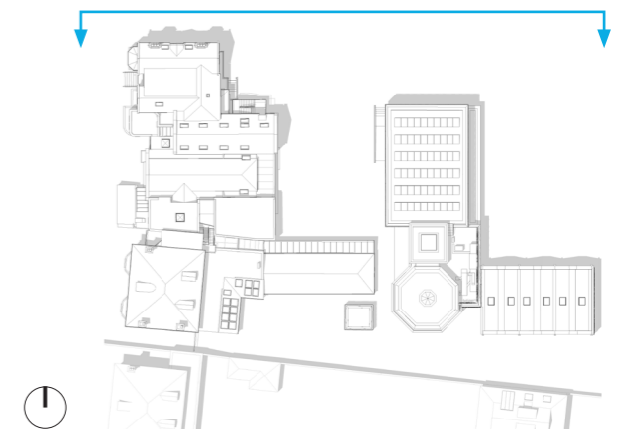




NORTH FACING ELEVATION

This view from Charmouth Court will largely be obscured by the row of mature trees along the North boundary

..... Outline of previous application

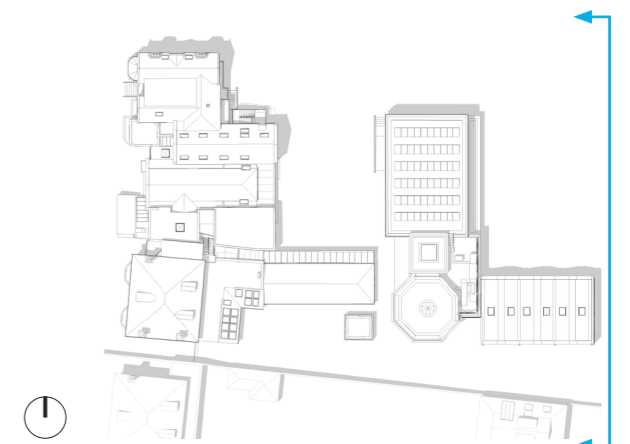


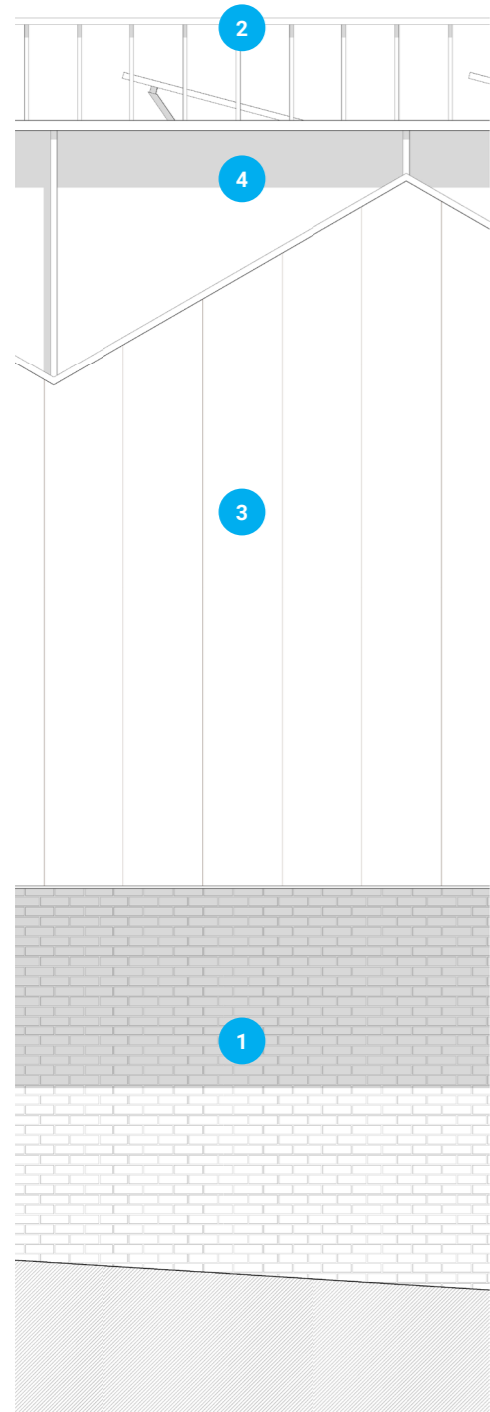


EAST FACING ELEVATION

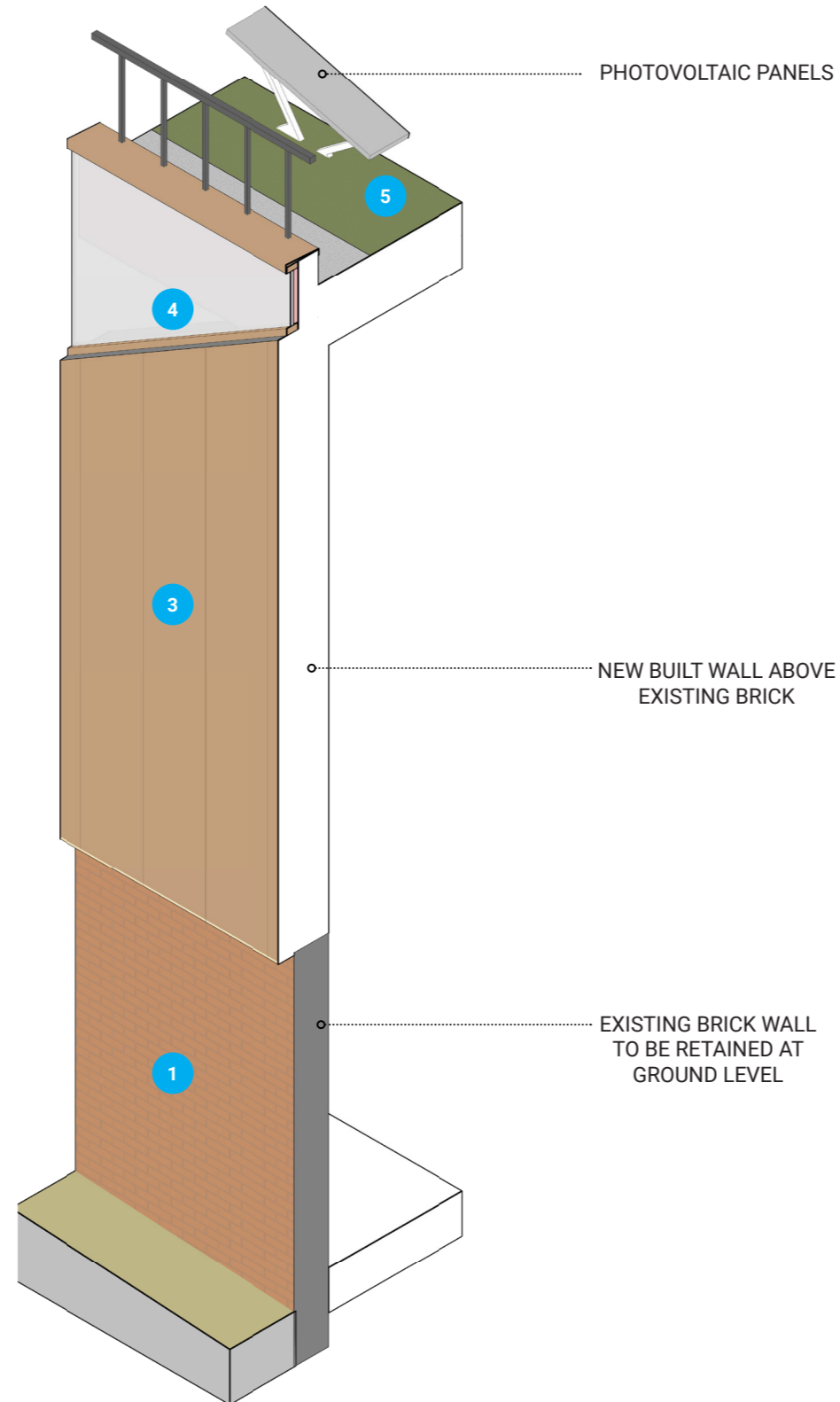
This view from Denbigh Gardens will largely be obscured by the row of mature trees along the East boundary

..... Outline of previous application



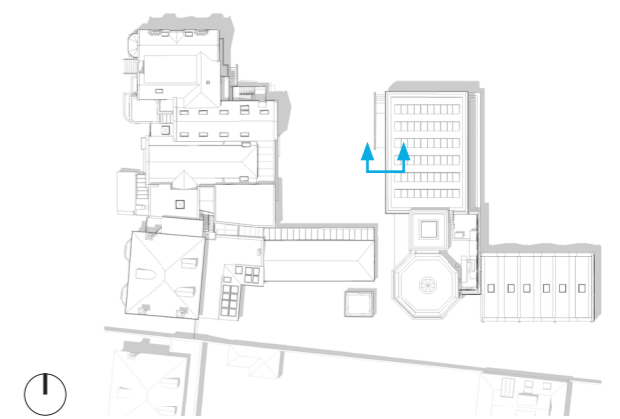


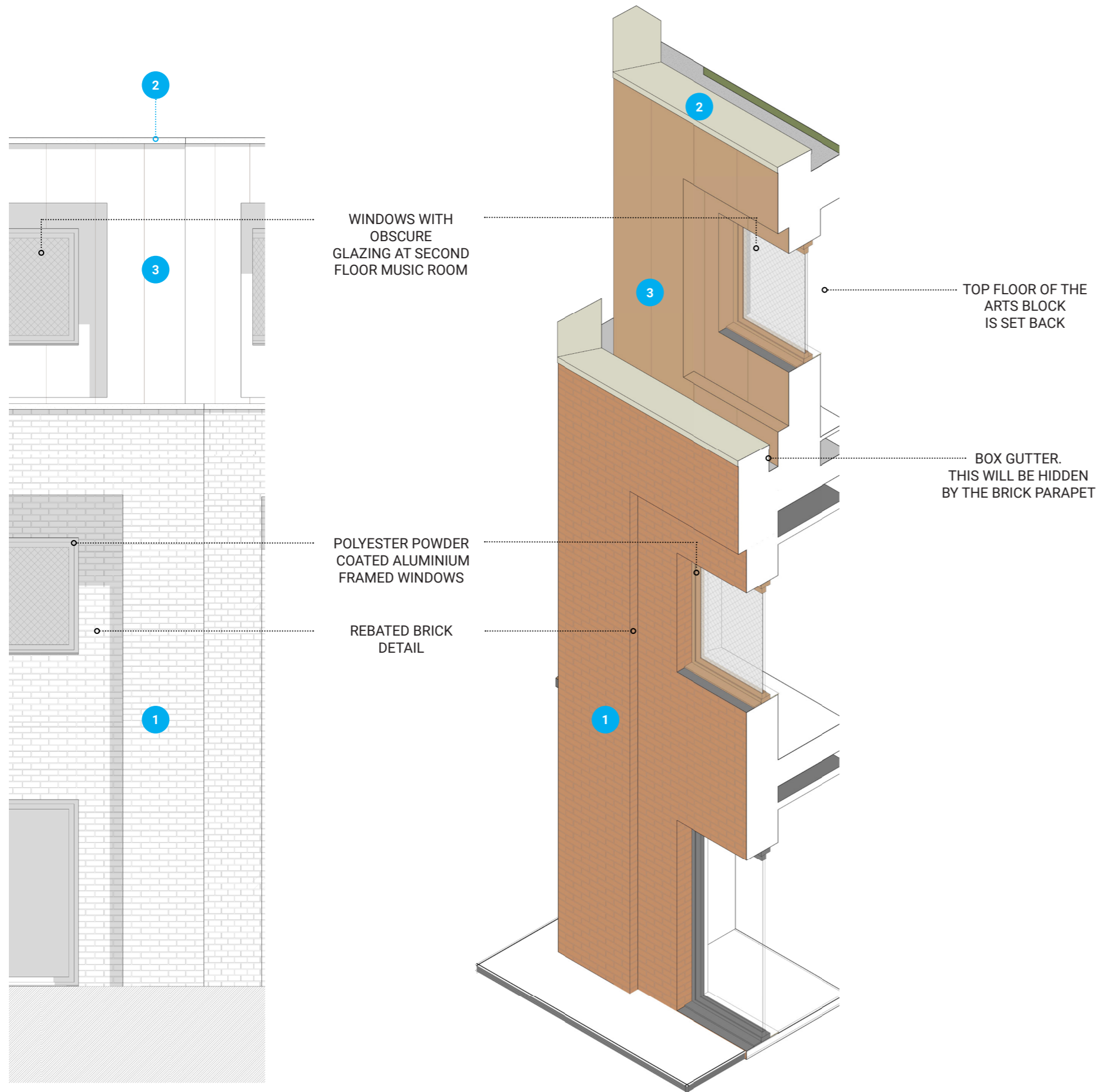
TIMBER CLADDING



KEY: MATERIALS

- 1 Richmond blend bricks, red tones
- 2 Metal balustrades
- 3 Red bronze coloured metal cladding
- 4 Kalwall cladding or similar
- 5 Green roof

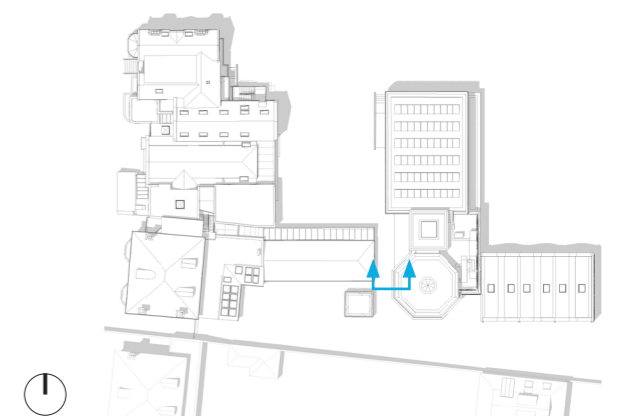




KEY: MATERIALS

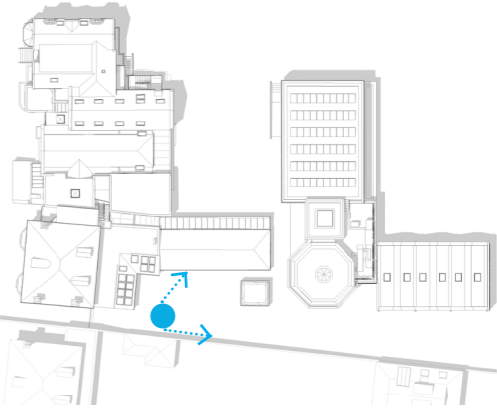
- 1 Richmond blend bricks, red tones
- 2 Reconstituted stone coping
- 3 Bronze coloured cladding

INSET BRICKS





VIEW FROM GARDEN SPACE TOWARDS NEW TEACHING BLOCK





VIEW FROM QUAD TOWARDS REDEVELOPED GENERAL HALL

