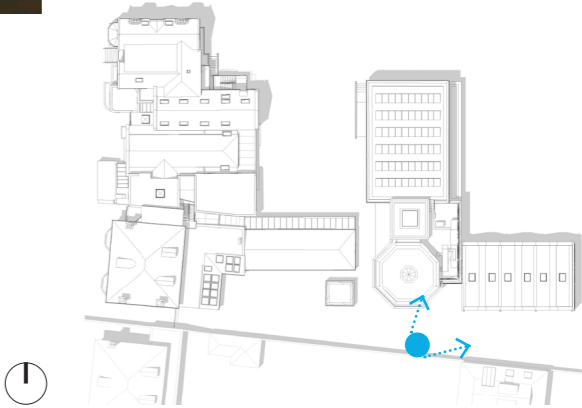




VIEW FROM WOODLAND LEARNING TRAIL TOWARDS NEW CLASSROOM BLOCK



LAYOUT

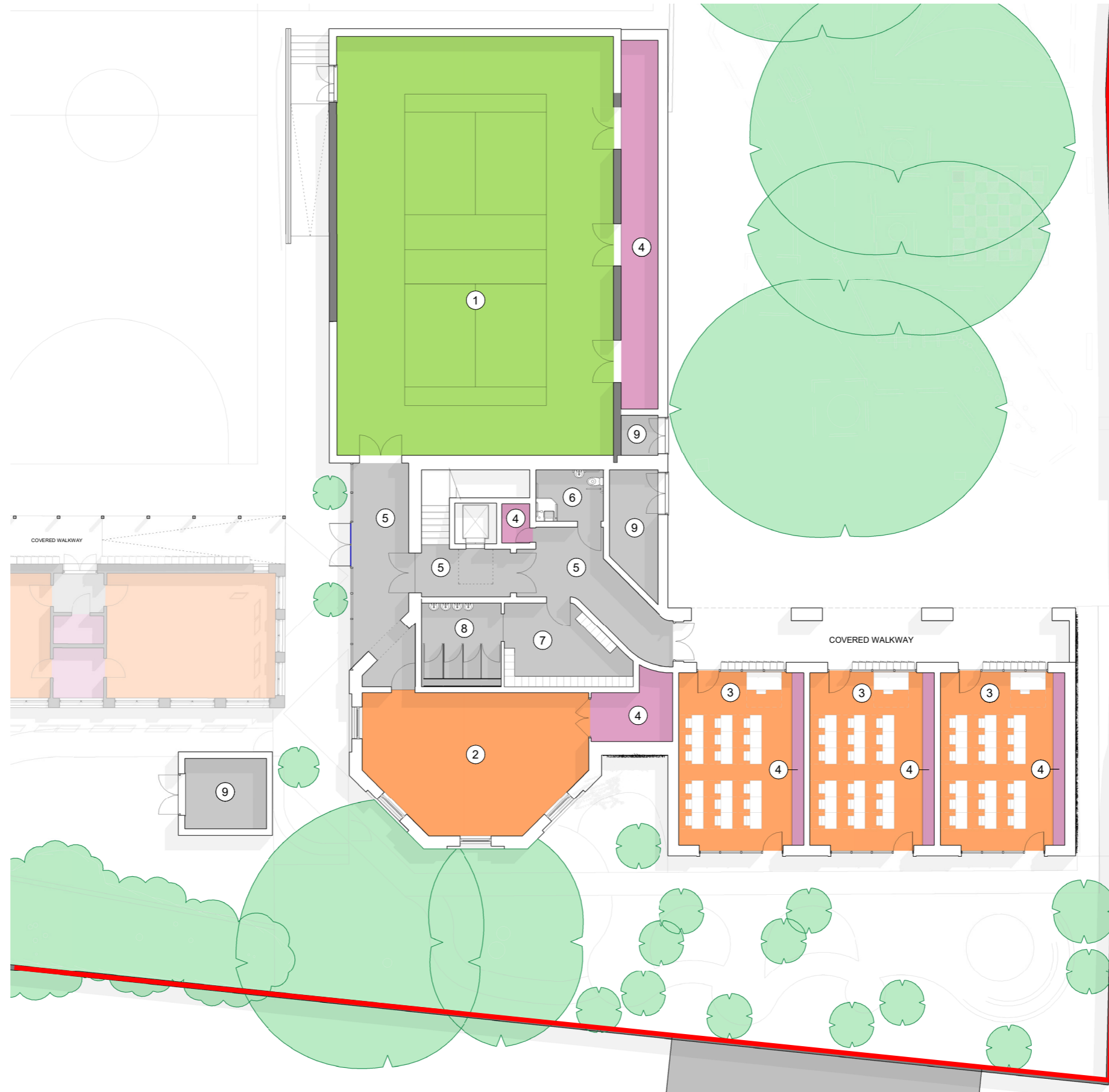
By removing the existing infill buildings and building a new block to the south east of the site a central courtyard is created, which ultimately forms the heart of the school. From this 'Quad' space all blocks can be accessed. Internal modifications to the existing Victorian blocks open up circulation routes, which helps wayfinding and general accessibility. It also allows more classrooms to be grouped by department, which is beneficial educationally as it facilitates departmental communication and resource sharing.

The new site layout means that externally access to PE and play space is more accessible and easier to supervise.

The 'Quad' is sheltered by buildings on three sides, which will help acoustic breakout to the neighbouring property at 64 King's Road.

Inside the new block access to classrooms will be provided to current educational space standards, which will avoid bottle-necking and pressures at lesson change over. There will be a lift through to the second floor, which will help make more the school more inclusive than it is presently.

The layout brings further accessibility benefits to the school by increasing the quantum of accessible floor plate from 38% to 54%. In addition to the internal accessibility benefits the external layout, and landscaping proposals will make the outdoor P.E. / play areas more accessible by regrading the external levels to the 'Quad' to avoid the addition of steps. Further details on this can be found in the access section (11) of the report.



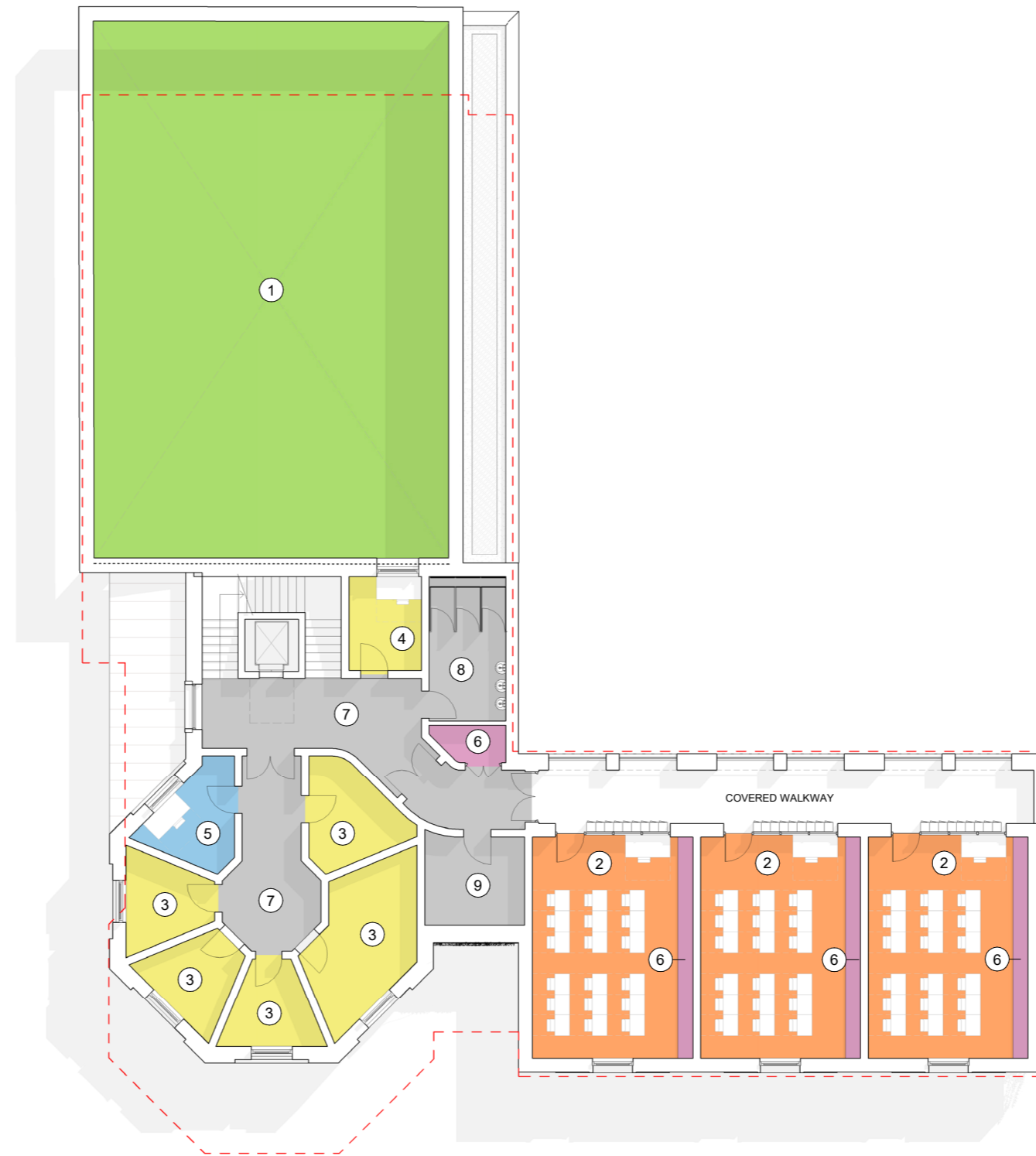
KEY: ROOM NUMBERS / NAMES

- 1. General hall
- 2. Drama classroom
- 3. General teaching classrooms
- 4. Storage
- 5. Circulation
- 6. Staff / accessible WC and shower
- 7. Changing room
- 8. Pupil WC
- 9. Plant area

KEY: DEPARTMENT COLOURS

- General teaching
- Large spaces
- Learning resource
- Staff and administration
- Storage
- Non-net area

⌚ GROUND FLOOR PLANNING



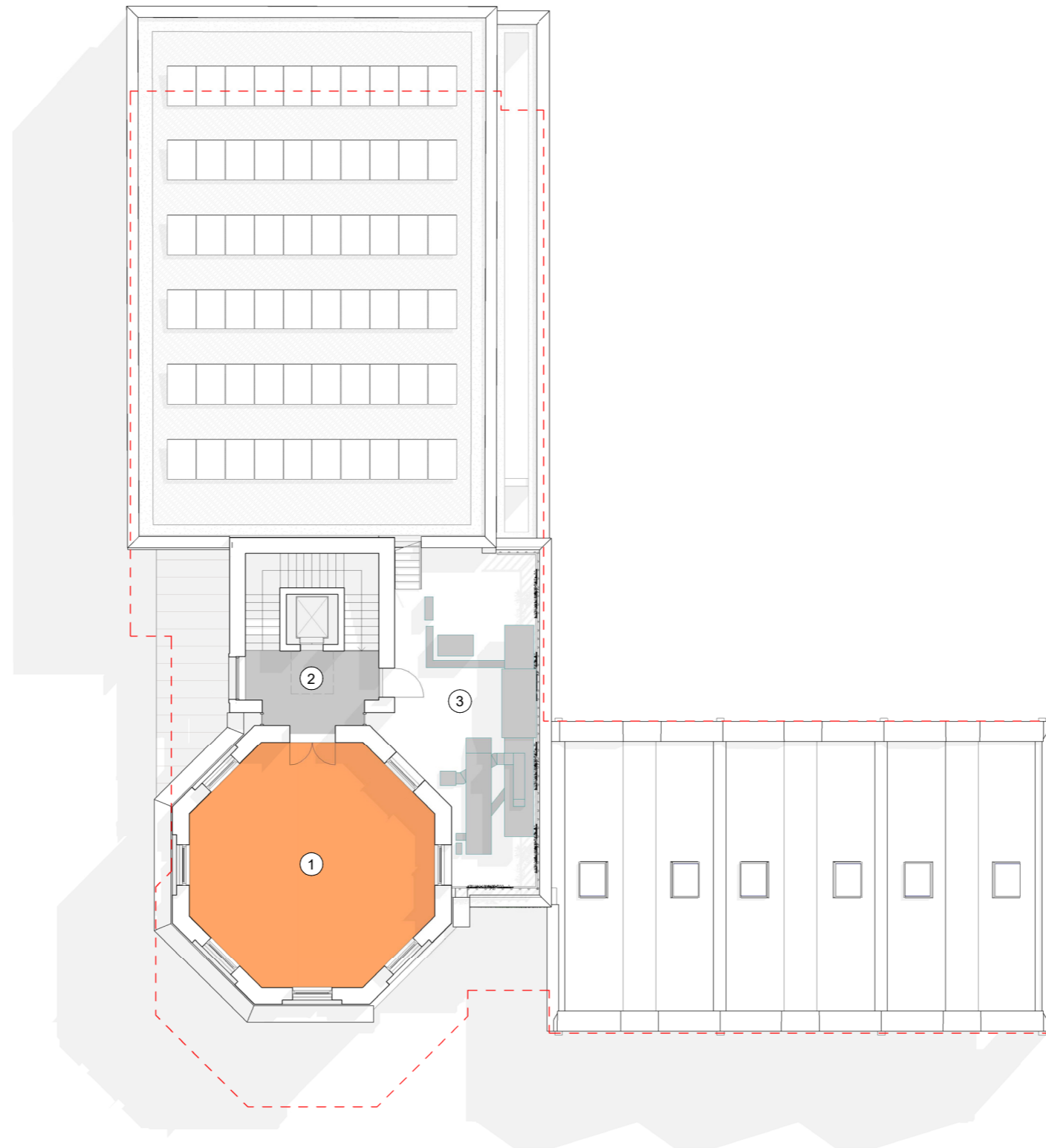
KEY: ROOM NUMBERS / NAMES

- 1. General hall
- 2. General teaching classrooms
- 3. Music practice rooms
- 4. AV recording
- 5. Music office
- 6. Storage
- 7. Circulation
- 8. Pupil WC
- 9. Plant Area

KEY: DEPARTMENT COLOURS

- General teaching
- Large spaces
- Learning resource
- Staff and administration
- Storage
- Non-net area

⌚ FIRST FLOOR PLAN NTS



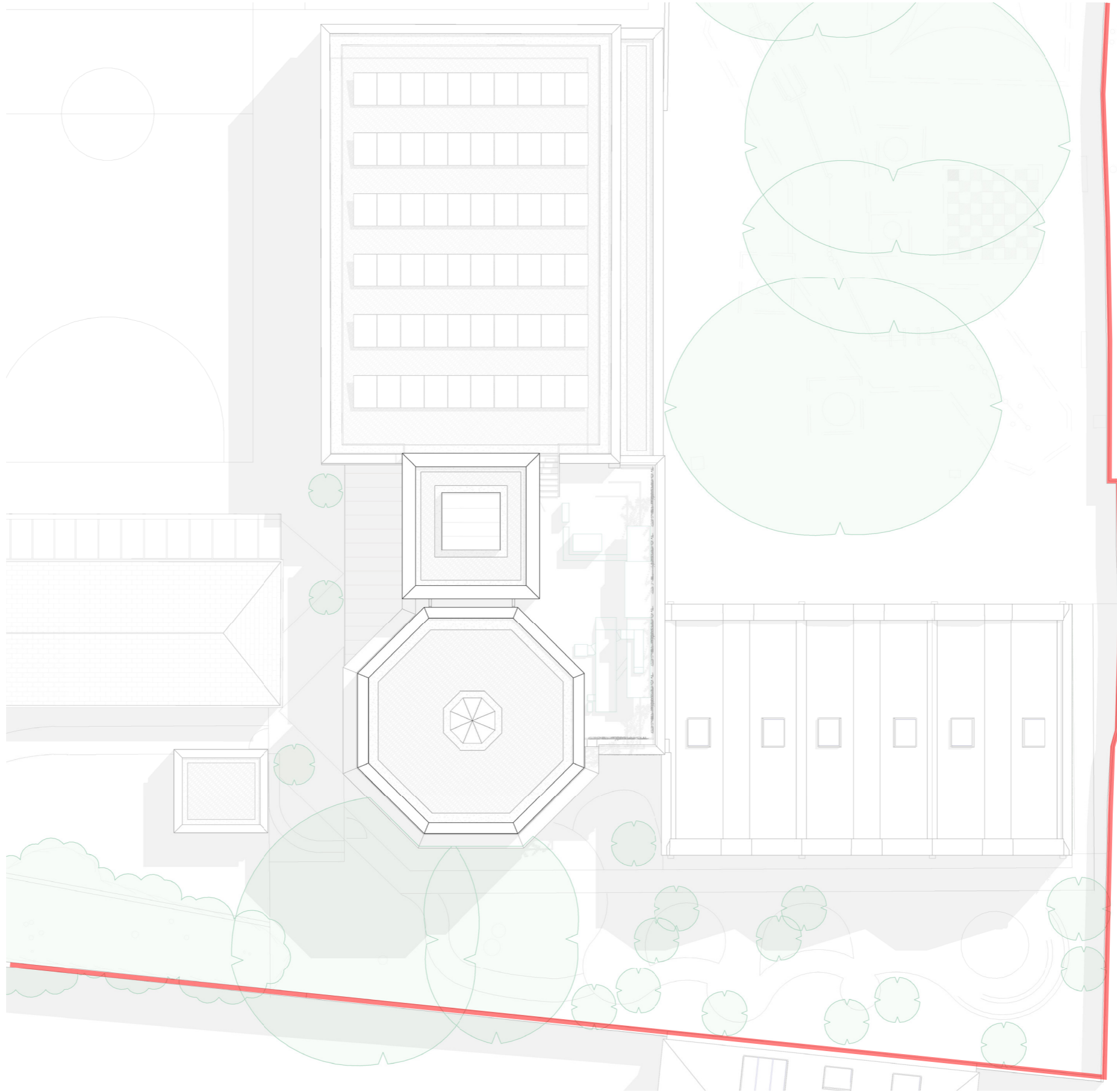
KEY: ROOM NUMBERS / NAMES

- 1. Music classroom
- 2. Circulation
- 3. Plant area

KEY: DEPARTMENT COLOURS

- General teaching
- Large spaces
- Learning resource
- Staff and administration
- Storage
- Non-net area

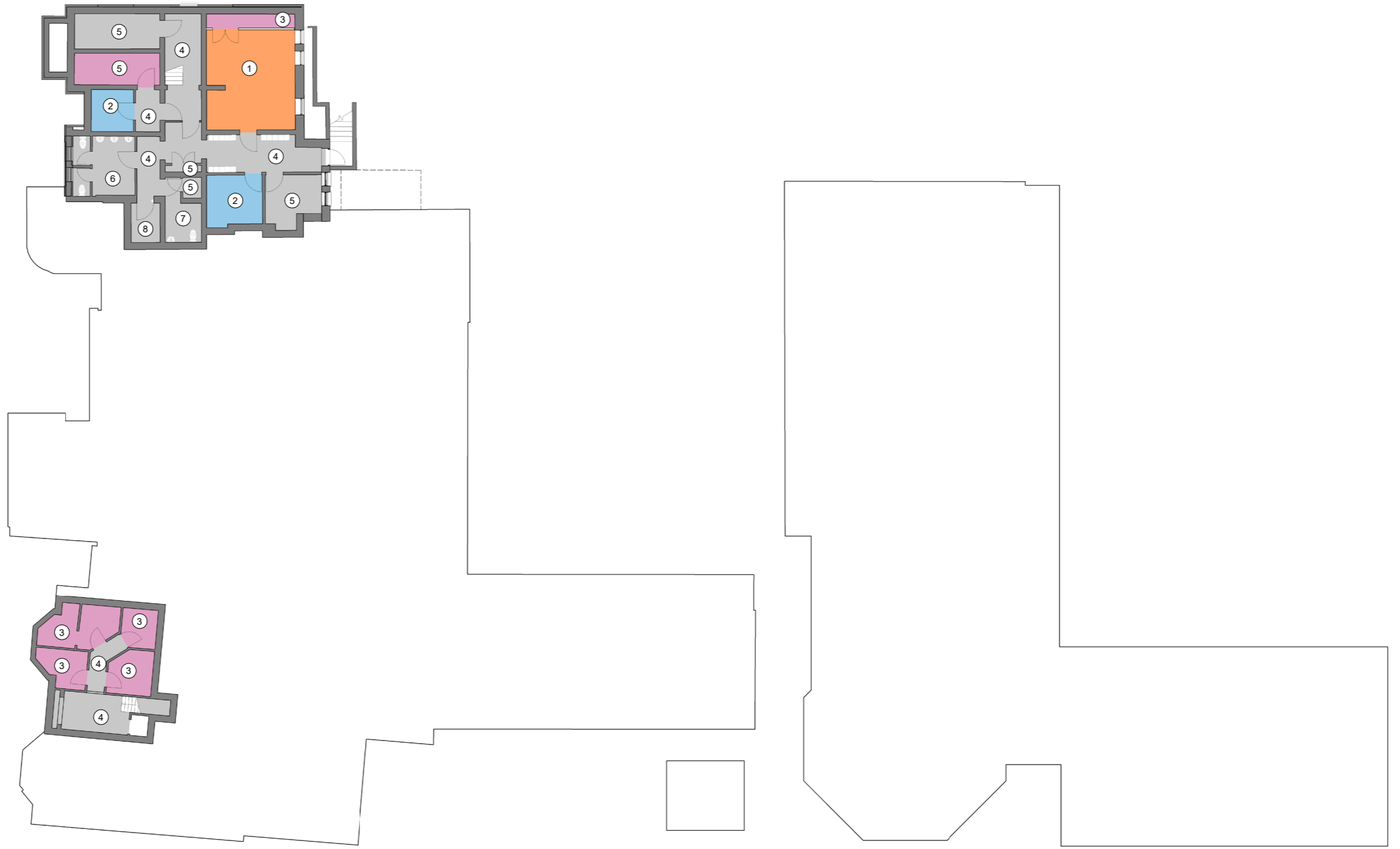
⌚ SECOND FLOOR PLAN NTS



KEY: DEPARTMENT COLOURS

- General teaching
- Large spaces
- Learning resource
- Staff and administration
- Storage
- Non-net area

⌚ ROOF PLAN NTS



KEY: ROOM NUMBERS / NAMES

- 1. General Teaching
- 2. Staff and Admin
- 3. Storage
- 4. Circulation
- 5. Plant
- 6. Male Changing / WC
- 7. Female Changing / WC
- 8. Shower Room

KEY: DEPARTMENT COLOURS

- General teaching
- Large spaces
- Learning resource
- Staff and administration
- Storage
- Non-net area

LOWER GROUND FLOOR PLANNTS



1 GROUND FLOOR PLAN NTS

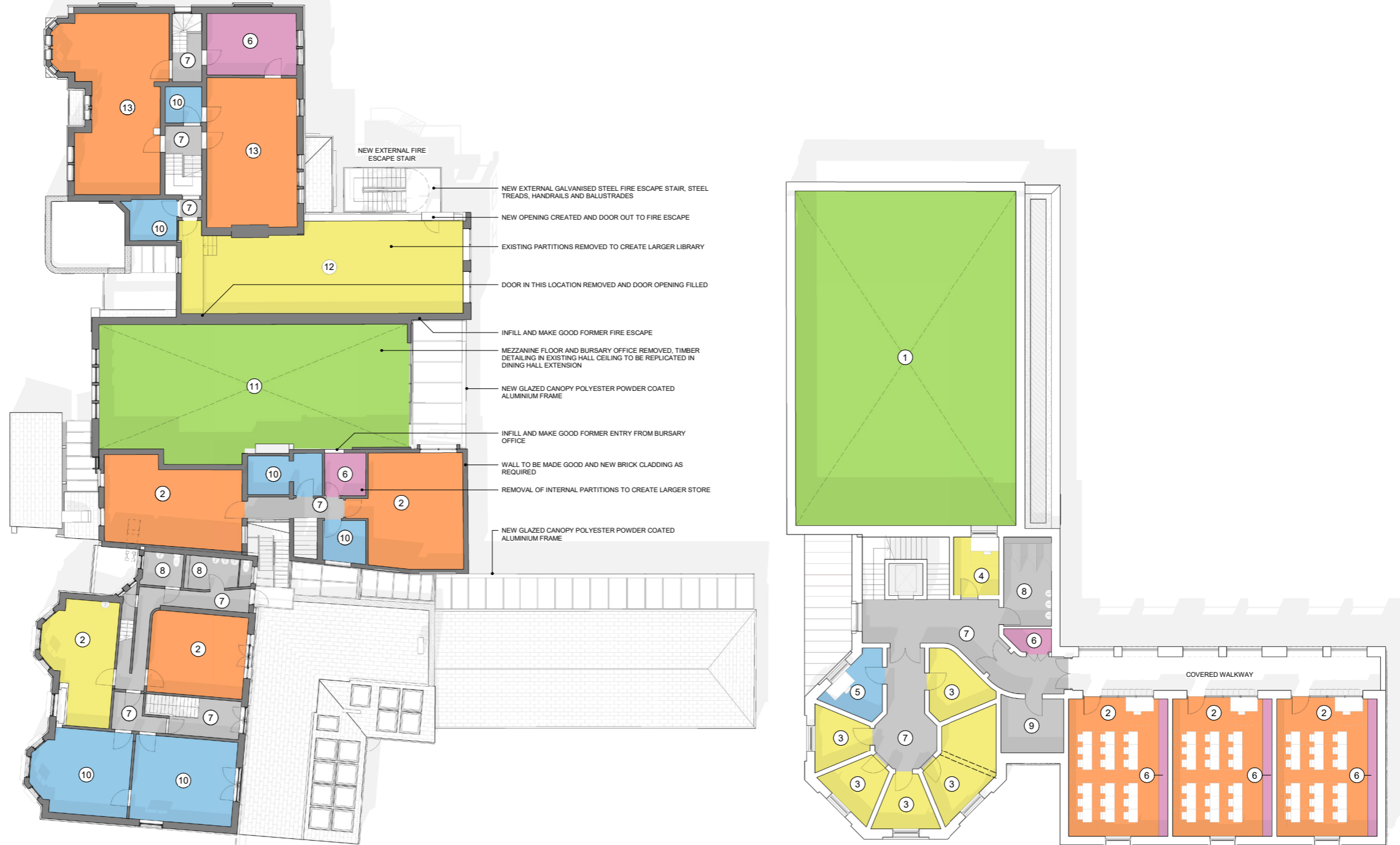
KEY: ROOM NUMBERS / NAMES

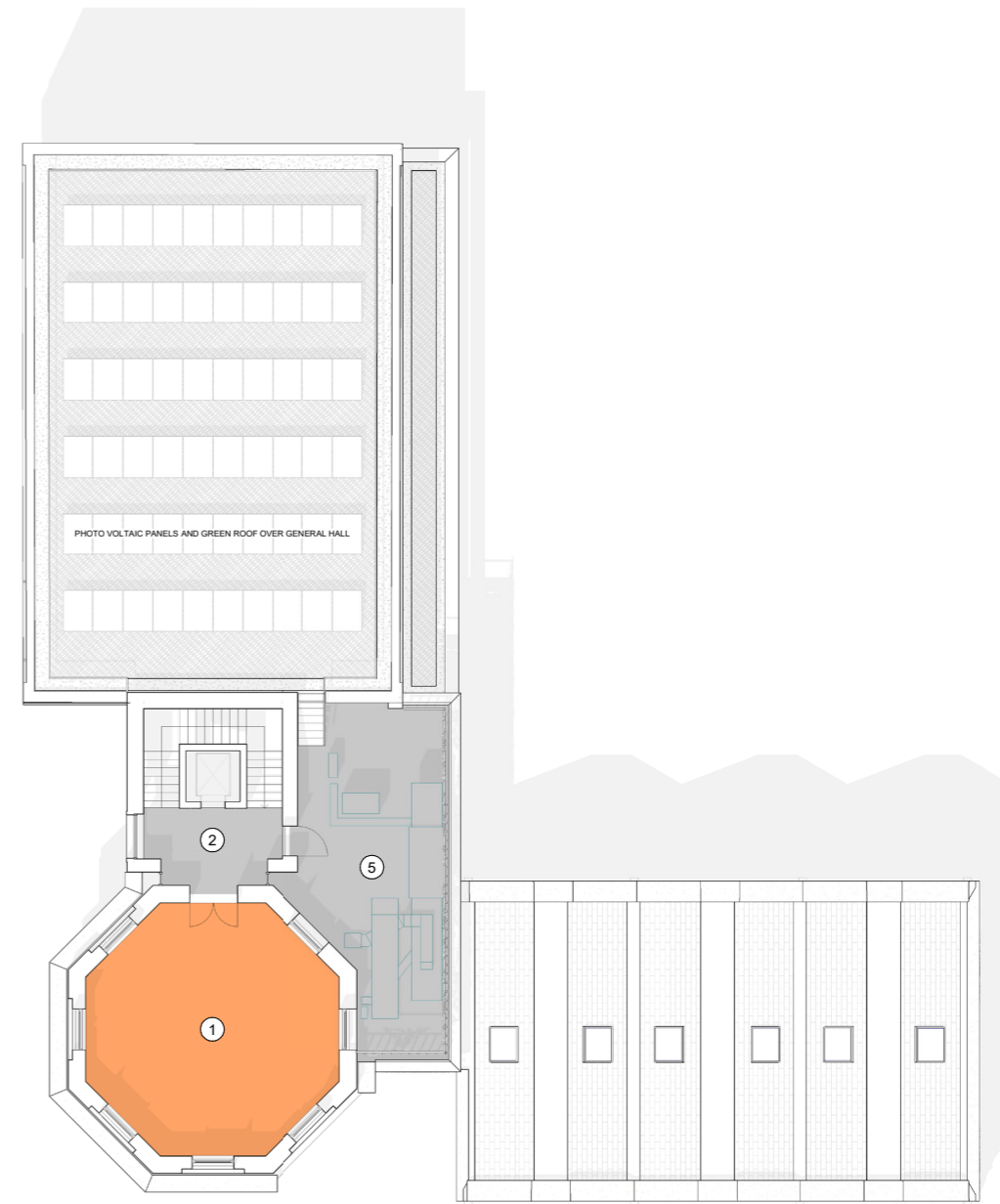
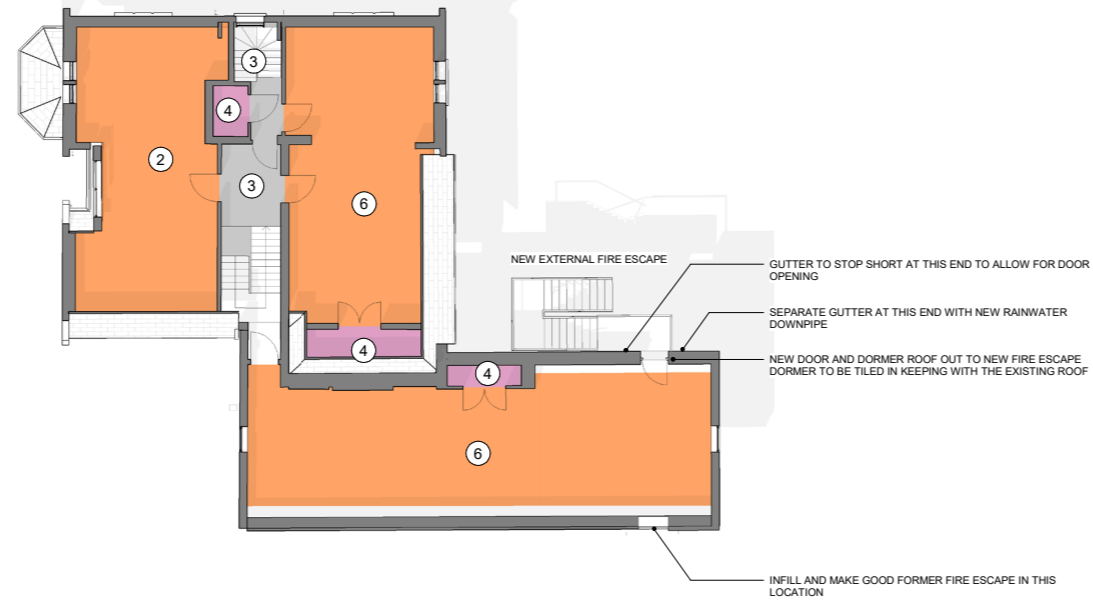
- 1. General Hall
- 2. General Teaching
- 3. Music Practice Rooms
- 4. AV Recording
- 5. Music Office
- 6. Storage
- 7. Circulation
- 8. Pupil WC
- 9. Plant Area
- 10. Administration
- 11. Dining Hall
- 12. Library / General Teaching

KEY: DEPARTMENT COLOURS

- General teaching
- Large spaces
- Learning resource
- Staff and administration
- Storage
- Non-net area

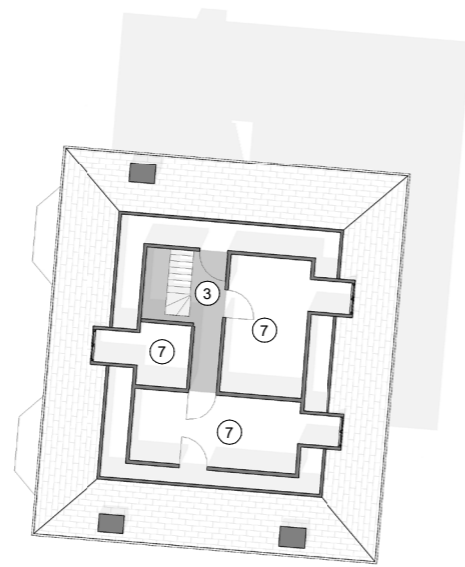
1 FIRST FLOOR PLAN NTS





KEY: ROOM NUMBERS / NAMES

- 1. Music Performance Space
- 2. General Teaching
- 3. Circulation
- 4. Storage
- 5. External Plant
- 6. Art / DT Classroom
- 7. Residential Accommodation



KEY: DEPARTMENT COLOURS

- General teaching
- Large spaces
- Learning resource
- Staff and administration
- Storage
- Non-net area

⌚ SECOND FLOOR PLANNINGS